



**DAMMON**  
ENGINEERING, INC.  
EMMETT  
DAMMON

ARCHITECT  
ROBERT  
SOLBERGER

1095 FLORIDA AVENUE  
SLIDELL, LA. 70458  
985-649-5832

WEBSITE:  
WWW.DAMMONENGINEERING.CO  
EMAIL:  
DAMMONENG@BELLSOUTH.NET

ARCHITECTURE  
ENGINEERING  
STUDIES  
PLANNING  
INVESTIGATION  
EXPERT WITNESS

TEXTRON  
OFFICE PLAN

TEXTRON  
MARINE AND  
LAND  
2585 FRONT ST  
SLIDELL, LA

DEMOLITION  
PLAN

REV: 10-25-07

SCALE: AS NOTED

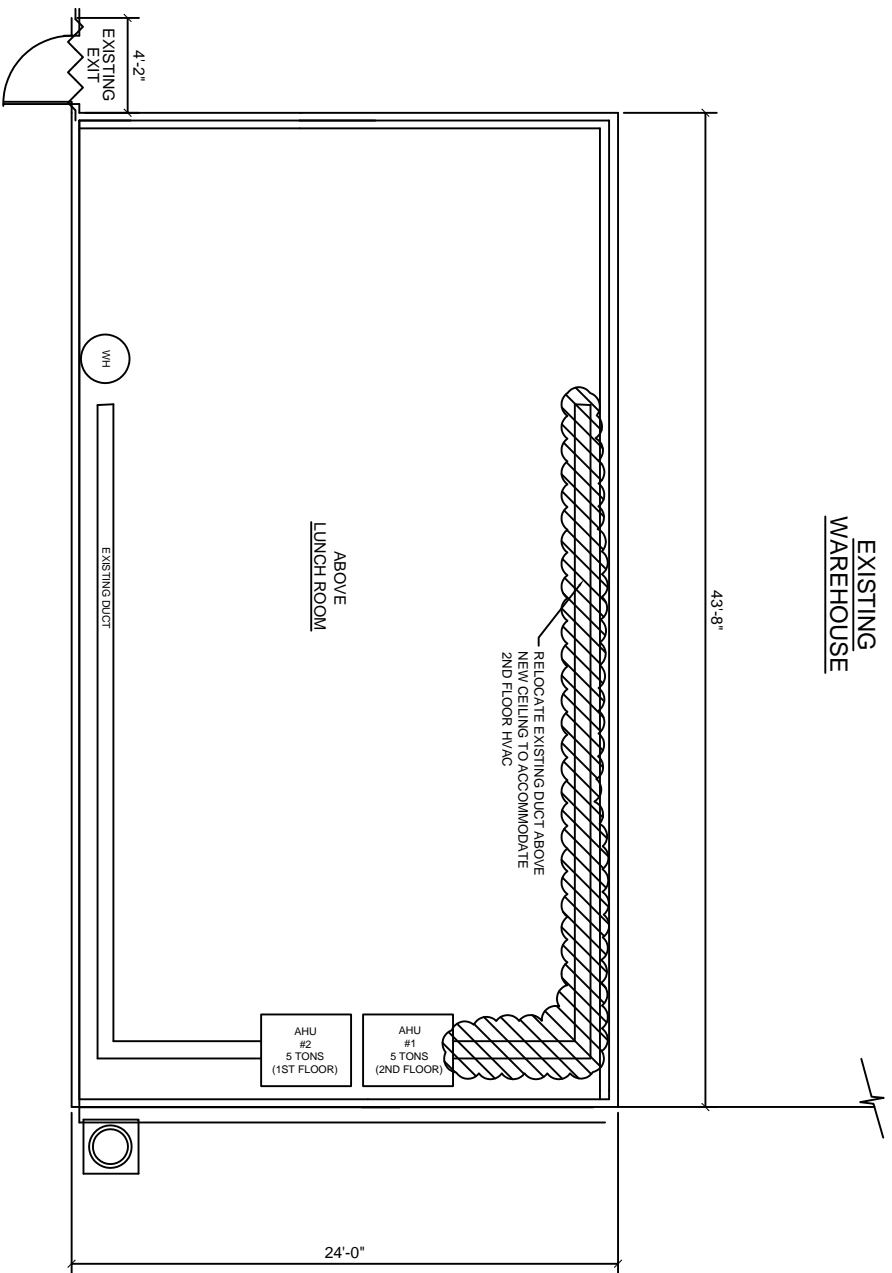
JOB#: 1880A

DATE: 9-5-07

SHEET 3

A-1

OF 6



DEMOLITION PLAN  
SCALE: 1/4"=1'-0"