

ELECTRICAL NOTES

1. ALL WORK SHALL CONFORM TO THE LATEST EDITION OF THE NATIONAL ELECTRICAL CODE, THE GOVERNING ELECTRICAL CODE AND ALL OTHER INSPECTION DEPARTMENTS HAVING JURISDICTION. OBTAINING PERMITS OR APPROVAL WHERE REQUIRED SHALL BE THE CONTRACTOR'S RESPONSIBILITY.
2. THE DRAWING INDICATES THE LOCATION AND TYPE OF ALL WORK. SCALE DIMENSIONS SHALL NOT BE USED TO DETERMINE THE LOCATION AND TYPE OF WORK. RECEPTACLES AND TELEPHONE OUTLETS, ETC. SHALL BE DETERMINED BY ACTUAL CONDITIONS IN THE FIELD PRIOR TO BIDDING. CONTRACTOR SHALL VISIT THE JOB SITE AND FAMILIARIZE THEMSELVES WITH THE EXISTING CONDITIONS.
3. ELECTRICAL CONTRACTOR SHALL COORDINATE HIS WORK WITH OTHER TRADES AND WITH OTHER CONTRACTORS WHOSE WORK MAY AFFECT THIS INSTALLATION.
4. ELECTRICAL CONTRACTOR SHALL COORDINATE INCOMING ELECTRICAL SERVICE WITH UTILITY COMPANY AND INCLUDE IN HIS BID ALL CHARGES AND FEES INCURRED IN MODIFICATIONS, WHERE MORE THAN ONE SWITCH OCCURS IN THE SAME LOCATION, THEY SHALL BE INSTALLED IN A GANG TYPE BOX UNDER ONE COVER PLATE.
5. ELECTRICAL CONTRACTOR SHALL COORDINATE THE TELEPHONE INSTALLATION WITH THE TELEPHONE COMPANY AND THE GENERAL CONTRACTOR.
6. BEFORE INSTALLING ANY OF THE WORK, THE CONTRACTOR SHALL SEE THAT IT DOES NOT INTERFERE WITH CLEARANCES REQUIRED FOR FINISHED COLUMNS, HUNG CEILINGS, PLASTER PARTITIONS, WALLS, ETC. AS SHOWN IN THE ARCHITECTURAL DRAWINGS AND DETAILS. IF ANY WORK IS INSTALLED AND IT LATER DEVELOPS THAT SUCH DETAILS OR DESIGN CANNOT BE FOLLOWED, THE CONTRACTOR, AT HIS OWN EXPENSE, SHALL MAKE SUCH CHANGES IN THE WORK AS DIRECTED BY THE ARCHITECT, AS WELL AS TO PERMIT THE INSTALLATION OF THE ARCHITECTURAL WORK AS SHOWN ON THE PLANS AND DETAILS.
7. PERFORM TEST REQUIRED BY THE OWNER OR THE ENGINEER IN CONNECTION WITH THE OPERATION OF THE ELECTRICAL SYSTEM IN THE BUILDING.
8. ALL TESTS SHALL BE MADE IN ACCORDANCE WITH THE LATEST STANDARD OF THE IEEE AND THE NATIONAL ELECTRICAL CODE.
9. MINIMUM CONDUCTOR SIZE SHALL BE #12, 600V INSULATION PER ARTICLE 300.22B; DUCTS SPECIFICALLY FABRICATED FOR ENVIRONMENTAL AIR. MINIMUM SIZE CONDUIT SHALL BE 3/4" EMT FOR INTERIOR USE, AND 3/4" RIGID ALUMINUM FOR EXTERIOR USE. USE TYPE NMC CABLE COVER, FOR LIGHTS AND RECEPTACLE CIRCUITS. EXTERIOR FITTINGS SHALL BE CAST BOXES AND COVERS. INTERIOR FITTINGS SHALL BE CAST WHERE EXPOSED ON WALLS.
10. CONTRACTOR SHALL INSTALL WIRING AND OTHER CIRCUIT COMPONENTS TO MATCH EQUIPMENT INSTALLED.
11. RECEPTACLES, AT RECEPTACLE LOCATIONS, WITHIN 5' OF SINKS OR LAVATORIES AND AT EXTERIOR LOCATIONS, EXTERIOR RECEPTACLES SHALL ALSO BE WEATHERPROOF, 250-71 & 250-72.
12. GROUND NEUTRAL IN ACCORDANCE WITH NFPA 70-250.23B.
13. FUSES SHALL BE IT CLASS K5, 250 VOLT, 200 000 AMP INTER-RUPTING CAP.
14. PROVIDE SERVICES OF A FIREARM DETECTION AND ALARM COMPANY TO DESIGN AND INSTALL ALARM SYSTEM TO THE REQUIREMENTS OF THE STATE FIRE MARSHAL.
15. ALL ELECTRICAL, MECHANICAL, AND PLUMBING PENETRATING FIRE PARTITIONS SHALL BE FIRE CAULKED. (PENETRATIONS THROUGH RATED CONSTRUCTION SHALL BE SEALED WITH A MATERIAL CAPABLE OF PREVENTING THE PASSAGE OF FLAMES AND HOT GASES WHEN TESTED IN ACCORDANCE WITH ASTM-E814.)

SYMBOL	DESCRIPTION	MANUFACTURER PRODUCT #	LAMPS
□	2x2 RECESSED FLUORESCENT W/ HIGH PERFORMANCE LUMINER	LIGHTOLIER GOS242 17277 WITH 32W BALLAST	2 EA. T8 17W FLUORESCENT 277V
●	6 RECESSED FLUORESCENT DOWNLIGHT - COLQUITE SERIES	LIGHTOLIER 6095 104" WITH 13W BALLAST	2 EA. 14W QUAD TUBE FLUORESCENT 277V
⊕	EMERGENCY GREEN LIGHT W/ 90 MIN. BATTERY BACKUP	TEUP LIGHTING EMI	2.5-4W HALOGEN
⊖	WALL MOUNTED LED EXIT SIGN WITH DIRECTIONAL ARROW	TEUP LIGHTING XE 2 R W EM	LED
⊕	HORN / STROBE EMERGENCY CONNECT TO EXISTING FIRE ALARM	(BY OTHERS)	LED
⊖	OCCUSWITCH CLASSIC CIG W/ MOUNT SENSOR W/ ZONE #	PHILIPS LRX2255 WITH IGA SERIES POWER PACK	
⊖	OCCUSWITCH CLASSIC WALL MOUNT SENSOR	PHILIPS LR52220	
⊖	SWITCH (THREE-WAY)		EQUAL
⊖	SWITCH (TWO-WAY)		EQUAL
⊖	SWITCH (20 AMP 277V)		EQUAL

NOTES:
1. CONNECT ALL EMERGENCY / EXIT LIGHT FIXTURES TO NEAREST CONSTRAINT POWER SOURCE.

LIGHTING FIXTURE SCHEDULE

LEGEND

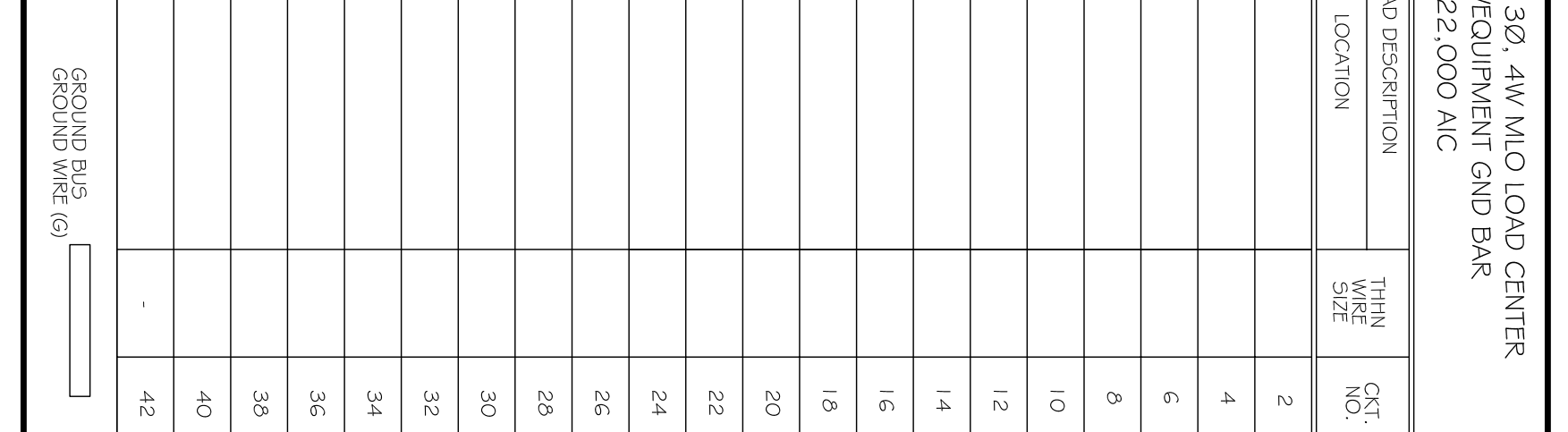
- ⊖ RECEPTACLE 20A 115V (EXISTING)
- ⊖ RECEPTACLE 20A 115V (NEW)
- ⊖ RECEPTACLE 20A 115V (NEW)
- ⊖ ABOVE COUNTER TOP
- ⊖ DEDICATED COMPUTER RECEPTACLE 20A MOUNTED ABOVE COUNTER TOP
- ⊖ DEDICATED RECEPTACLE 20A 115V
- ⊖ TELEPHONE
- ⊖ DATA OUTLET
- ⊖ CABLE TV
- ⊖ DISCONNECT
- ⊖ POWER PANEL
- ⊖ SWITCH
- ⊖ THREE-WAY SWITCH

NO.	WIRE SIZE	LOCATION	BREAKER	LOAD (VA)	AG	NG	CG	LOAD (VA)	BREAKER	LOAD (VA)	LOCATION	WIRE SIZE	NO.
1													2
3													4
5													6
7													8
9													10
11													12
13													14
15													16
17													18
19													20
21													22
23													24
25													26
27													28
29													30
31													32
33													34
35													36
37													38
39													40
41													42

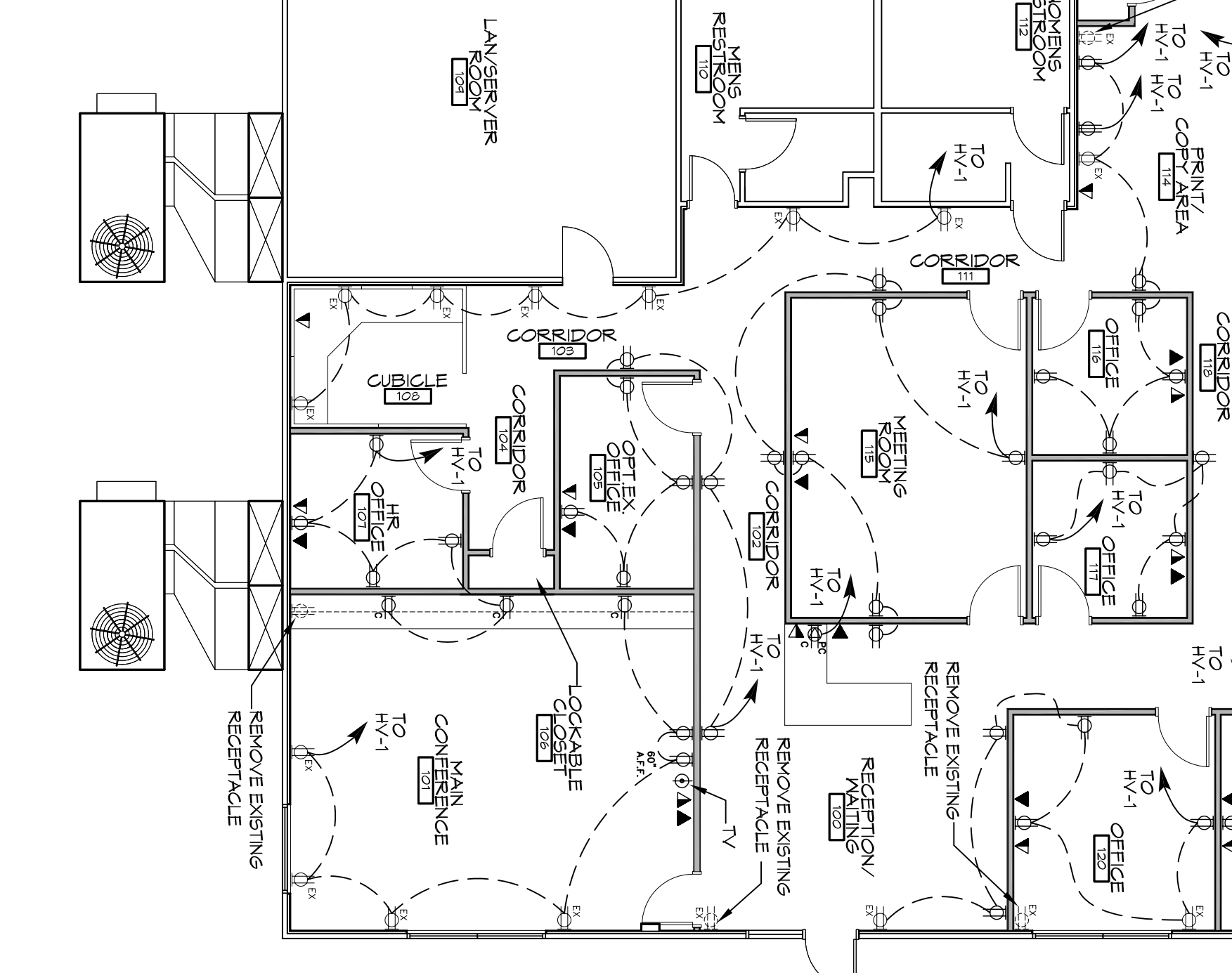
NEW PANEL: HV-1
LOCATION: WAREHOUSE WALL
FEDER SOURCE: INTRISKY

VOLTAGE: 480/277V - A 3Ø, 4W AND LOAD CENTER ENCLOSURE: RECESSED WE/EQUIPMENT GND BAR WITH DOL-ON BREAKERS: 22,000 AIC

TOTAL CONNECTED LOAD (VA) = ...



2 ELECTRICAL LIGHTING PLAN
SCALE: 1/8" = 1'-0"



1 ELECTRICAL POWER PLAN
SCALE: 1/8" = 1'-0"

OFFICE RENOVATIONS:
TEXTRON
Marine & Land Systems
252 STONE ROAD
SLIDELL, LOUISIANA

JOB NO: 2112 DATE: 11.XX.2015
DRAWN BY: JTL CHECKED BY: CKD, KJK

SHEET TITLE:
ELECTRICAL FLOOR PLANS

DRAWING NUMBER:
E1

PRELIMINARY
NOT FOR
CONSTRUCTION

REVISIONS	DATE
# DESCRIPTION	

SCALE:

DAMMON
ENGINEERING, INC.
Architects & Engineers

Chief Architect: Kevin J. Kinchen, NCARB
554 Old Spanish Trail
Slidell, LA 70458

www.dammonengineering.com
dammoneng@bellsouth.net
PH: 985.649.5832
F: 985.641.5950