

FEATURES & SPECIFICATIONS

INTENDED USE

Specification premium, high performance, static T8 luminaires provide general illumination for recessed applications; ideal for restricted plenum spaces.

ATTRIBUTES

Designed exclusively for use with T8 lamps, electronic ballasts and sockets.

CONSTRUCTION

Smooth hemmed sides and smooth, inward formed end flanges for safe handling. Lighter weight fixture allows safe, easy installation.

Standard steel door frame has superior structural integrity with premium extruded appearance and precision flush mitered corners. Steel door allows easy lens replacement without frame disassembly (for lenses up to .156" thick). Powder-painted, steel latches provide easy, secure door closure.

Superior mechanical light seal requires no foam gasketing. Integral T-bar clips secure fixture to T-bar system. Housing formed from cold-rolled steel. Acrylic shielding material 100% UV stabilized. No asbestos is used in this product.

US PATENTS: 6,210,025; 6,231,213; 6,213,625; 2,288,471.

FINISH

Five-stage iron-phosphate pretreatment ensures superior paint adhesion and rust resistance. Painted parts finished with highly reflective matte white enamel.

OPTICAL

A12 lens features reverse apex technology for superior lamp obscuration and improved visual comfort.

ELECTRICAL SYSTEM

Standard ballast is electronic, thermally protected, resetting, Class P, HPF, non-PCB, UL Listed, CSA certified ballast, universal voltage and sound rated A.

Luminaire is suitable for damp locations. AWM, TFN or THHN wire used throughout, rated for required temperatures.

LISTING

Standard: UL. Optional: Canada — CSA or cUL; Mexico — NOM.

WARRANTY

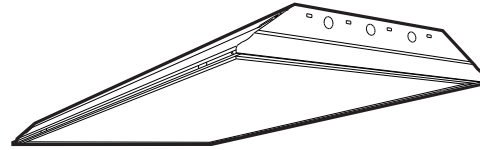
Guaranteed for one year against mechanical defects in manufacture.

Specifications subject to change without notice.

Catalog Number	
Notes	Type

Specification Premium T8 Troffer

SP8 2'x4'



2, 3, 4 or 6 Lamps
T8



Specifications

Length: 48 (1218)
Width: 24 (609)
Depth: 3-11/16 (94)
Weight: 22 lbs (9.9 kg)



All dimensions are inches (millimeters).

ORDERING INFORMATION

For shortest lead times, configure product using **standard options (shown in bold)**.

Example: 2SP8 G 3 32 A12 MVOLT 1/3 GEB10IS

2SP8							
Series	Number of lamps	Door frame		Voltage	Options ¹		
2SP8 2' wide	2 3 4 6 Not included.	(blank) Flush steel, white		120	1/4 One 4-lamp ballast		
		FN Flush aluminum, natural		277	1/3 One 3-lamp ballast		
		FM Flush aluminum, matte black		347	GEB10IS Electronic ballast, ≤10% THD, instant start		
		FW Flush aluminum, white		MVOLT	GEB10RS Electronic ballast, ≤10% THD, rapid start		
		RN Regressed aluminum, natural		Others available.	EL Emergency battery pack (nominal 300 lumens)		
		RM Regressed aluminum, matte black			EL14 Emergency battery pack (nominal 1400 lumens)		
		RW Regressed aluminum, white			GLR Internal fast-blow fuse		
Trim type	Lamp type	Diffuser type			GMF Internal slow-blow fuse		
G Grid F Overlapping flanged	32 32W T8 (48")	A12 #12 pattern acrylic, reverse apex			LST Tandem-wired fixture pairs (shared ballasts)		
		A12125 #12 pattern acrylic, .125" thick			PWS1836 6' prewire, 3/8" dia., 18-gauge, 1 circuit		
		RA125 #12 pattern acrylic, .125" thick, reverse apex			PWS1846 6' prewire, 3/8" dia., 18-gauge, 2 circuits		
		A19 #19 pattern acrylic, .156" thick			LP735 Lamped, 700-series, 3500K		
		A15 #15 pattern acrylic, .2" thick			LP__ Lamped; specify lamp type and color		
		PC1S 1/2" x 1/2" x 1/2" plastic cube louver, silver			JP Palletized and stretch-wrapped without individual cartons		
		PC2S 1-1/2" x 1-1/2" x 1" plastic cube louver, silver w/ flange			CSA CSA Certified		
		PC3S 3/4" x 3/4" x 1/2" plastic cube louver, silver			NOM NOM Certified		

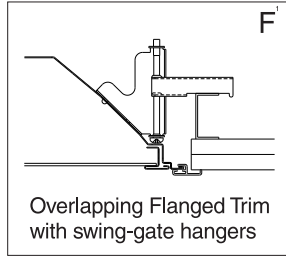
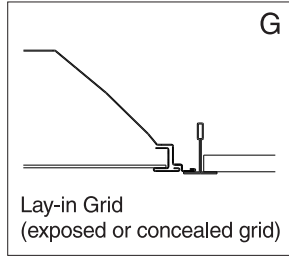
NOTE:

¹ MVOLT standard for 120-277V applications, 50-60 hz operation. Some options require voltage specified.

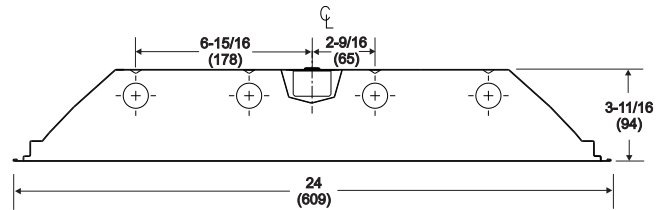
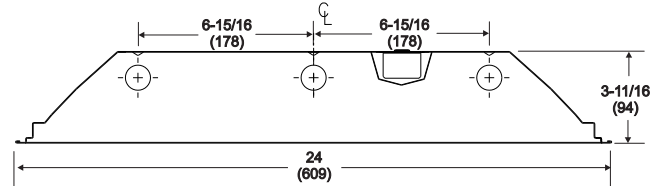
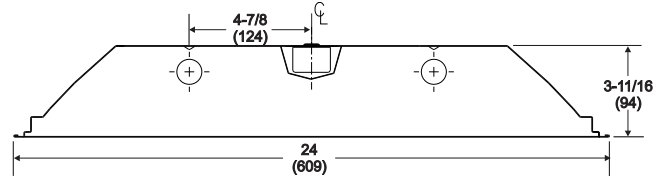
SP8 2'x4' Static T8 Troffer

MOUNTING DATA

Continuous row mounting of flanged units requires CRE and CRM trim options (see Options).



DIMENSIONS



NOTE:

- 1 Recommended rough-in dimensions for F-trim fixtures 24"x48". (Tolerance is +1/4"-0".) Swing-gate range 1-3/16" to 3-15/16". Swing-gate span 23-3/8" to 26-11/16". Fixture swing-gate points require additional 9/16" over nominal fixture height.

PHOTOMETRICS

Calculated using the zonal cavity method in accordance with IESNA LM41 procedure. Floor reflectances are 20%. Lamp configurations shown are typical. Full photometric data on these and other configurations available upon request.

2SP8 2 32 A12*

Report LTL 7525

Lumens per lamp - 2850 – Lum. eff. - 85.5%

S/MH (along) 1.3 (across) 1.4

Coefficient of Utilization

Ceiling Wall	80%			70%			50%		
	70%	50%	30%	70%	50%	30%	50%	30%	10%
0	102	102	102	99	99	99	95	95	95
1	94	90	87	92	88	85	85	82	80
2	86	80	74	84	78	73	75	71	68
3	79	71	64	77	70	64	67	62	58
4	73	63	56	71	62	56	60	55	50
5	67	57	50	66	56	49	54	48	44
6	62	52	44	61	51	44	49	43	39
7	58	47	40	57	46	40	45	39	34
8	54	43	36	53	42	36	41	35	31
9	51	39	33	49	39	33	38	32	28
10	47	36	30	46	36	30	35	29	25

Zonal Lumens Summary

Zone	Lumens	%Lamp	%Fixture
0-30	1541	27.0	31.6
0-40	2571	45.1	52.7
0-60	4192	73.5	86.0
0-90	4874	85.5	100.0
90-180	0	0	0
0-180	4874	85.5	100.0

2SP8 3 32 A12*

Report LTL 7492

Lumens per lamp - 2850 – Lum. eff. - 83.6%

S/MH (along) 1.3 (across) 1.4

Coefficient of Utilization

Ceiling Wall	80%			70%			50%		
	70%	50%	30%	70%	50%	30%	50%	30%	10%
0	100	100	100	97	97	97	93	93	93
1	92	88	85	90	86	83	83	80	78
2	84	78	73	82	77	72	74	70	66
3	78	70	63	76	68	62	66	61	57
4	72	62	55	70	61	55	59	54	49
5	66	56	49	64	55	49	53	48	43
6	61	51	44	60	50	43	49	43	38
7	57	46	39	56	46	39	44	38	34
8	53	42	36	52	42	35	41	35	31
9	50	39	32	49	38	32	38	32	28
10	47	36	30	46	36	29	35	29	25

Zonal Lumens Summary

Zone	Lumens	%Lamp	%Fixture
0-30	2319	27.1	32.4
0-40	3833	44.8	53.6
0-60	6164	72.1	86.2
0-90	7147	83.6	100.0
90-180	0	0	0
0-180	7147	83.6	100.0

2SP8 4 32 A12*

Report LTL 7526

Lumens per lamp - 2850 – Lum. eff. - 81.5%

S/MH (along) 1.2 (across) 1.4

Coefficient of Utilization

Ceiling Wall	80%			70%			50%		
	70%	50%	30%	70%	50%	30%	50%	30%	10%
0	97	97	97	95	95	95	91	91	91
1	90	86	83	87	84	81	81	78	76
2	82	76	71	80	75	70	72	68	65
3	76	68	62	74	67	61	64	59	55
4	70	61	54	68	60	53	58	52	48
5	64	55	48	63	54	47	52	46	42
6	60	50	43	58	49	42	47	42	37
7	56	45	38	54	44	38	43	37	33
8	52	41	35	51	41	34	40	34	30
9	48	38	32	47	38	31	37	31	27
10	46	35	29	44	35	29	34	28	25

Zonal Lumens Summary

Zone	Lumens	%Lamp	%Fixture
0-30	3029	26.6	32.6
0-40	4999	43.8	53.8
0-60	8017	70.3	86.3
0-90	9292	81.5	100.0
90-180	0	0	0
0-180	9292	81.5	100.0

* With reverse apex lens

Energy (Calculated in accordance with NEMA standard LE-5)

LER.FL	ANNUAL ENERGY COST**	LAMP DESCRIPTION	LAMP LUMENS	BALLAST FACTOR	WATTS
77	\$3.12	(2) 32W T8	2850	.90	57
74	\$3.24	(3) 32W T8	2850	.87	85
77	\$3.12	(4) 32W T8	2850	.88	107

** Comparative yearly lighting energy cost per 1000 lumens



An AcuityBrands Company