



Mike Zweifel Home Designs

(504) 641-7168

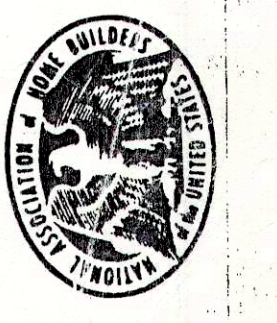
1253 GAUSE BLVD. SUITE 201
SLIDELL, LOUISIANA 70458

NOTE: Although not shown, the contractor shall check all materials and the responsible for the construction shall check all details and the responsible for the design.

PLANS FOR: DONALD JACOBS
GRAND LAGOON CONDOMINIUMS

DATE: 3-31-84
SCALE: 5/8" = 1'-0"

DRAWN BY: [Signature]
PROJECT: CROSS SECTION
FILE NUMBER: 111/2
SHEET: 7 OF 11



NOTES: 1) ALL LAMINATED BEAMS SHALL CONFORM TO AMERICAN INSTITUTE OF TIMBER CONSTRUCTION SPECIFICATION FOR STRUCTURAL GLUED LAMINATED TIMBER, AITC 117-74 AND PRODUCT STANDARD PS-36-73 FOR STRUCTURAL LAMINATED TIMBER.

2) ALL TIMBER CONSTRUCTION SHALL BE IN CONFORMANCE WITH THE AITC TIMBER CONSTRUCTION MANUAL, LATEST EDITION.

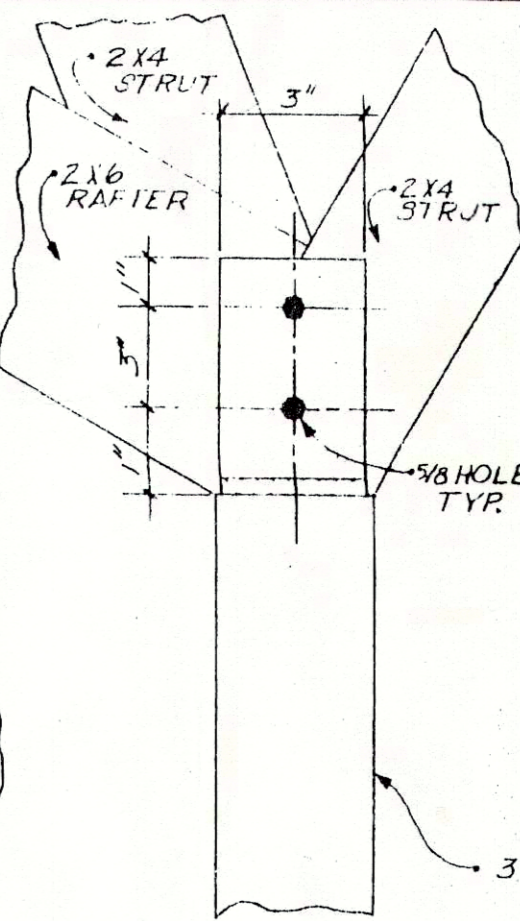
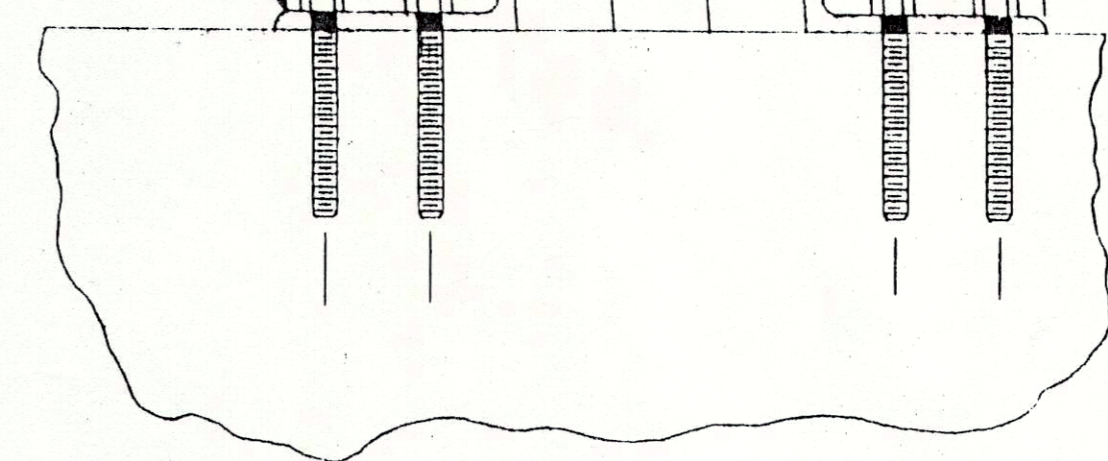
3) ALL ROOF SYSTEM ANCHORAGE TO TOP PLATES AND BEAMS, AND ALL ANCHORAGE OF WALLS TO ANCHORED SILLS AND TOP PLATES SHALL BE MADE WITH METAL STRAP OR METAL PLATE CONNECTORS, 12 GA. GALVENIZED STEEL, IN CONFORMANCE WITH AITC.

4) RAFTER CONNECTIONS TO LAMINATED BEAMS SHALL BE MADE WITH STEEL CLIP ANGLES AND 1/2" Ø LAG SCREWS (SEE DETAIL).

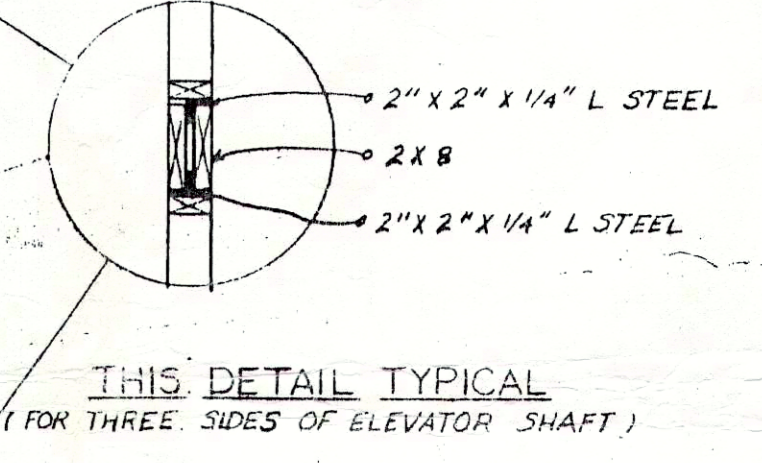
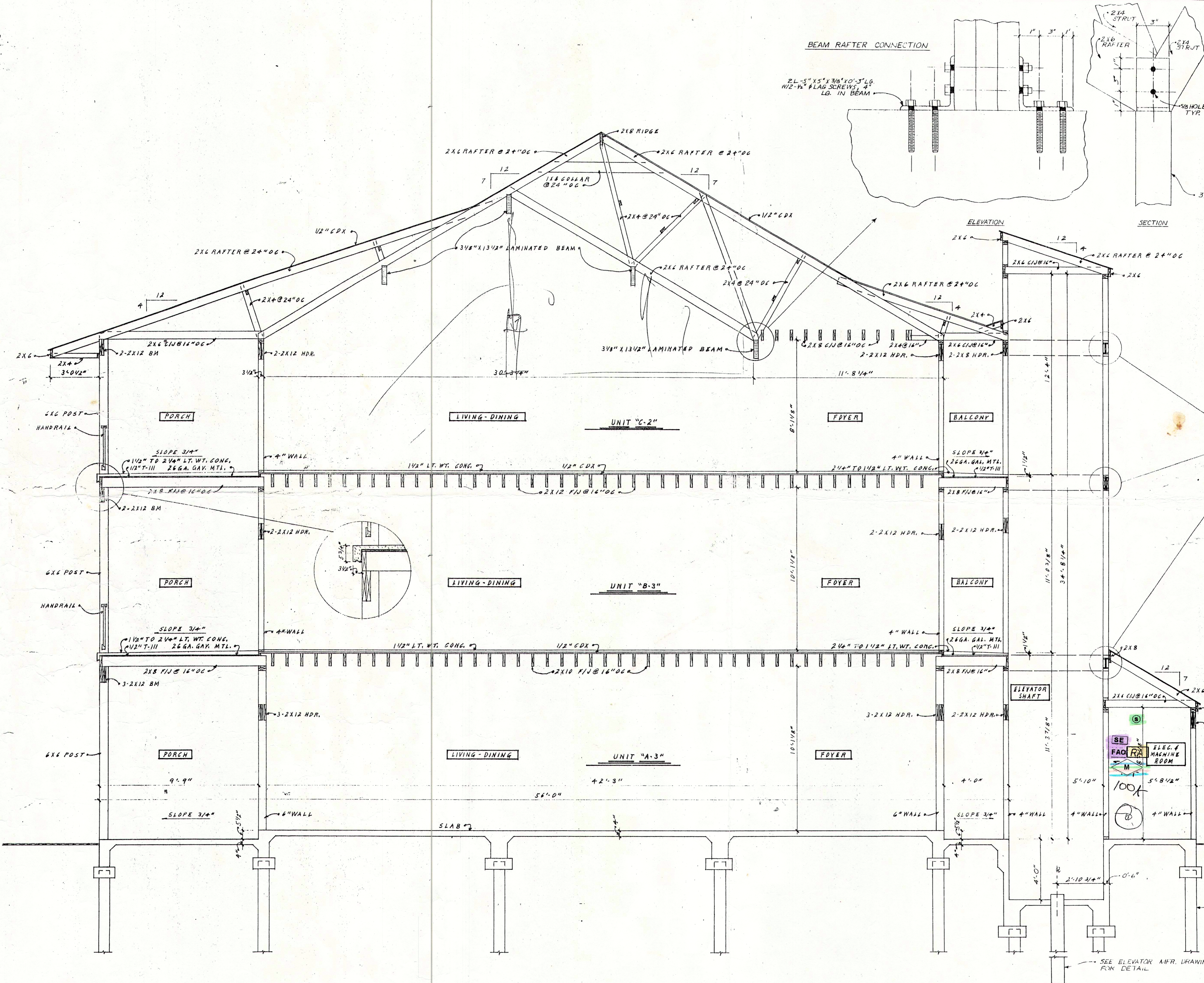
5) ELEVATOR DOOR OPENINGS, HOISTWAY CLEARANCES, MACHINE ROOM SIZING, AND PIT DIMENSIONS PER ELEVATOR MFR. REQUIREMENTS.

BEAM RAFTER CONNECTION

2L-5" X 5" X 3/8" X 10'-3" LG. W/2-W" LAG SCREWS, 4 LG. IN BEAM



SECTION



THIS DETAIL TYPICAL
(FOR THREE SIDES OF ELEVATOR SHAFT)

SEE PILING PLAN AND FOUNDATION PLAN FOR DETAILS.

SEE ELEVATOR MFR. DRAWINGS FOR DETAIL.

REVIEWED FOR
STATE FIRE MARSHAL
AS PER REVIEW LETTER
BY RON C. MATHIS
[Signature]

245176