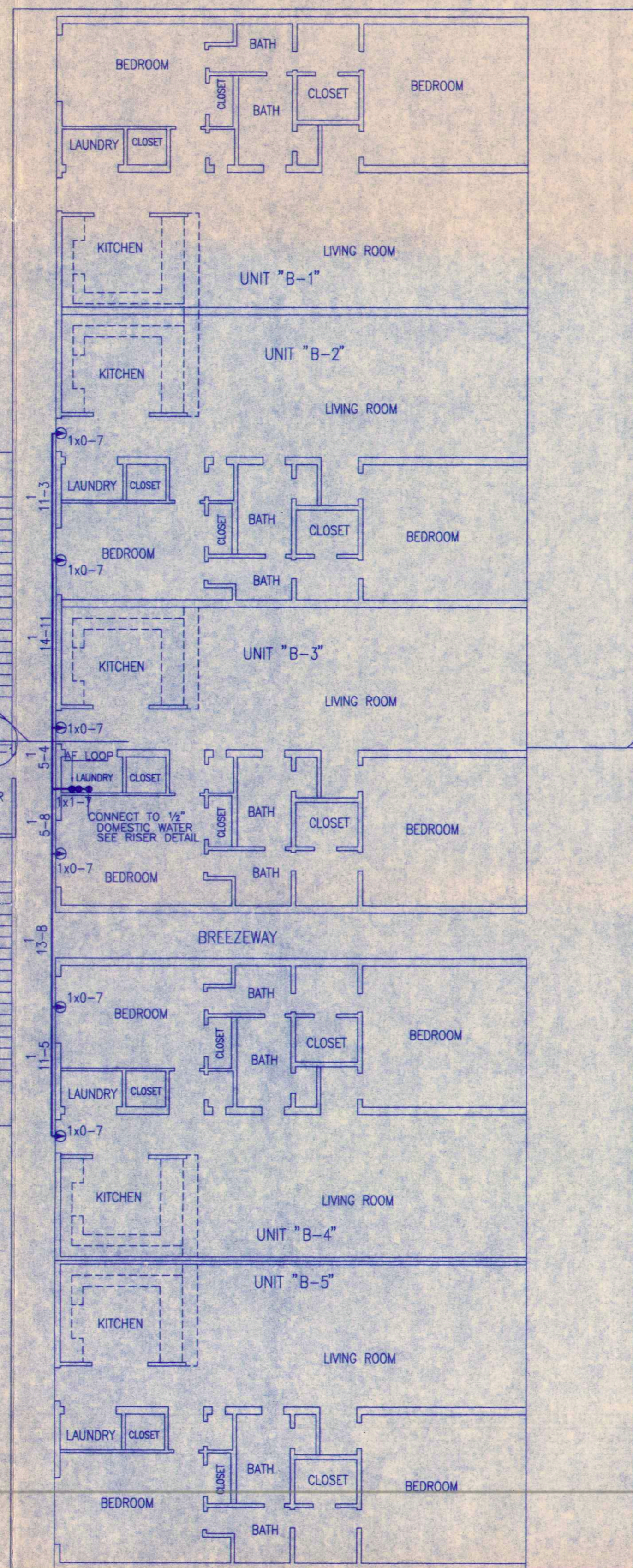
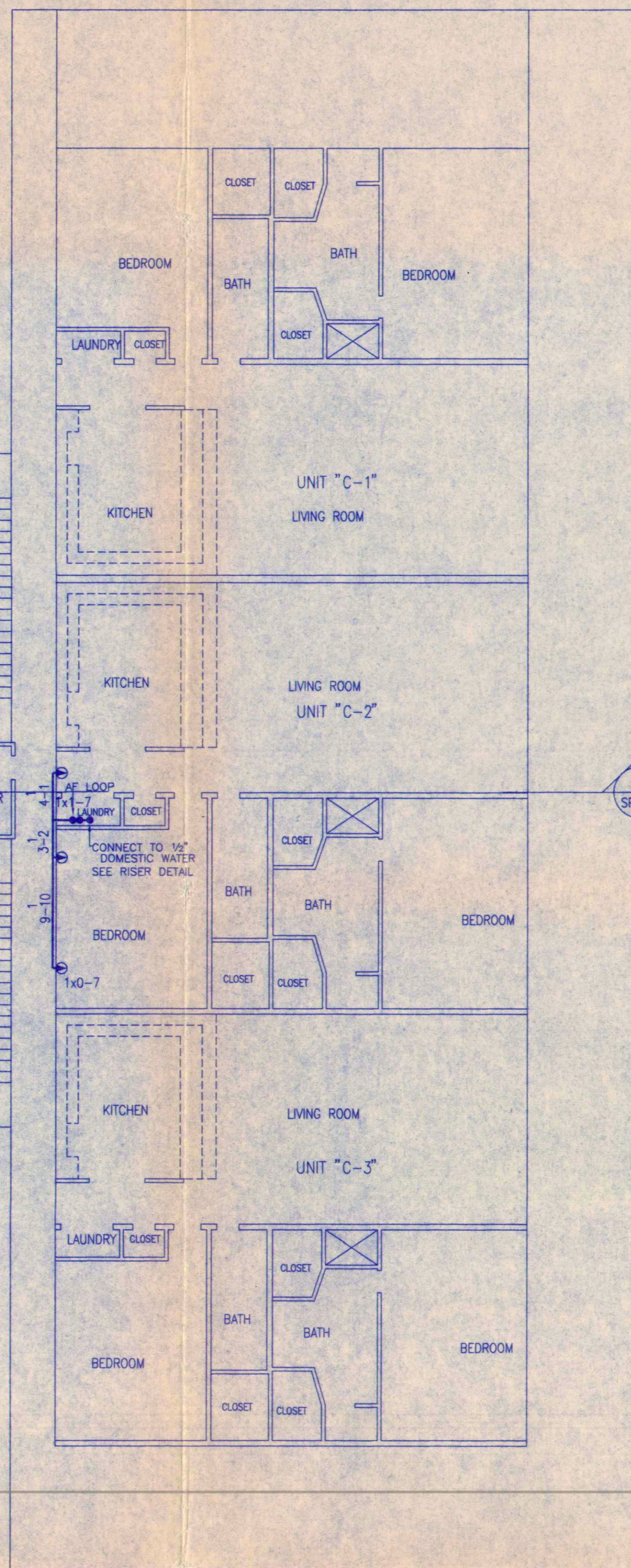


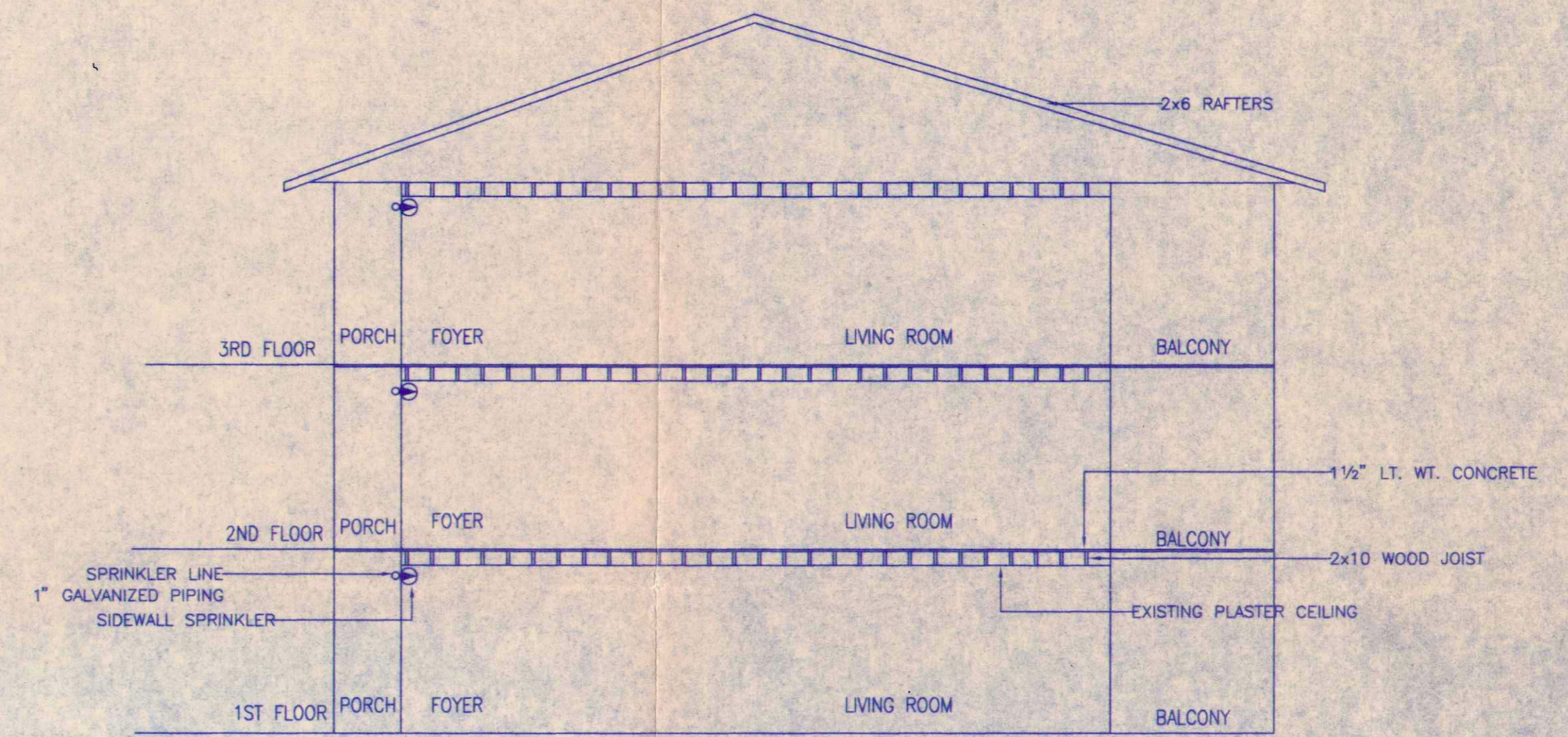
1ST FLOOR SPRINKLER PLAN
SCALE: 1/8" = 1'-0"



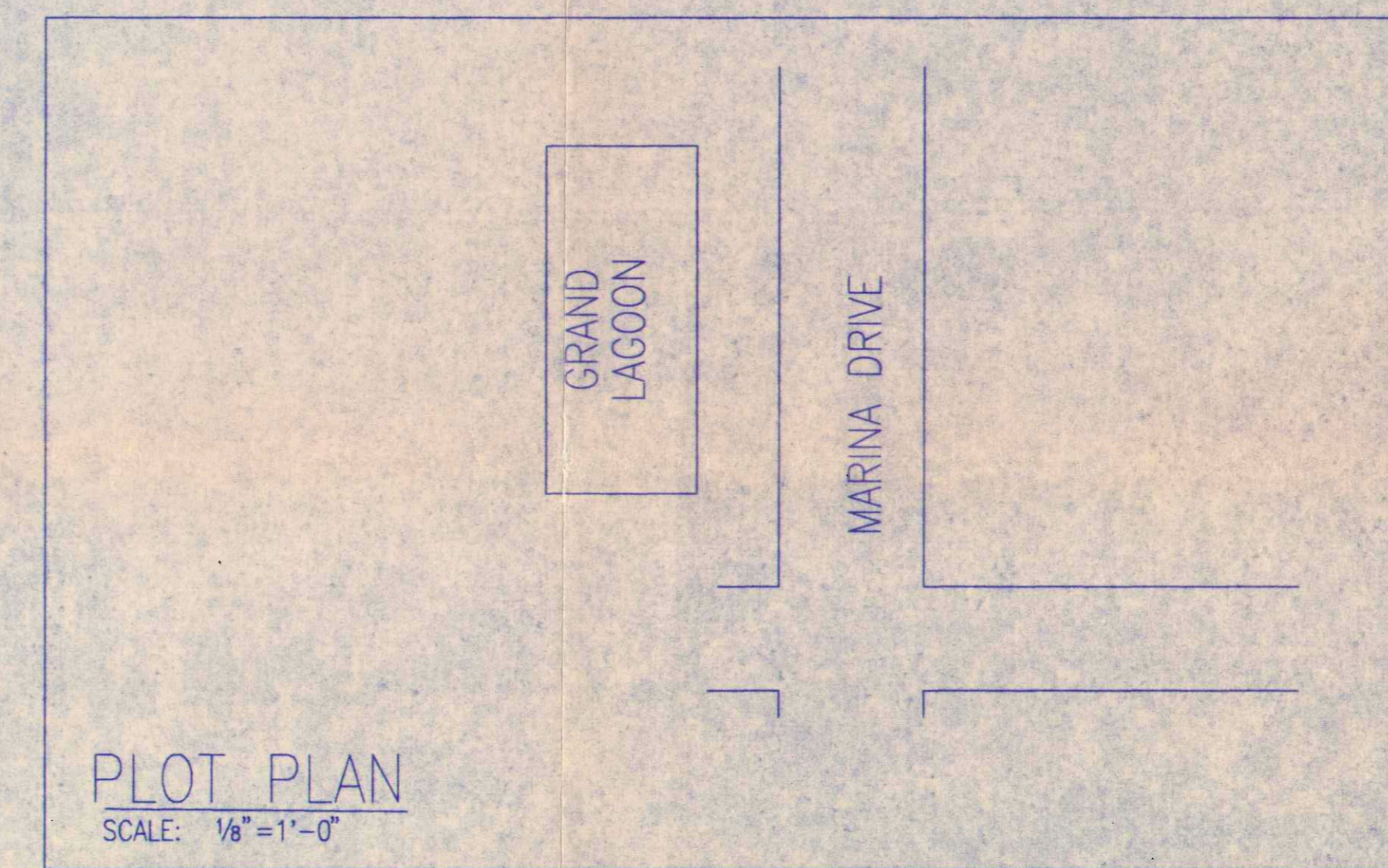
2ND FLOOR SPRINKLER PLAN
SCALE: 1/8" = 1'-0"



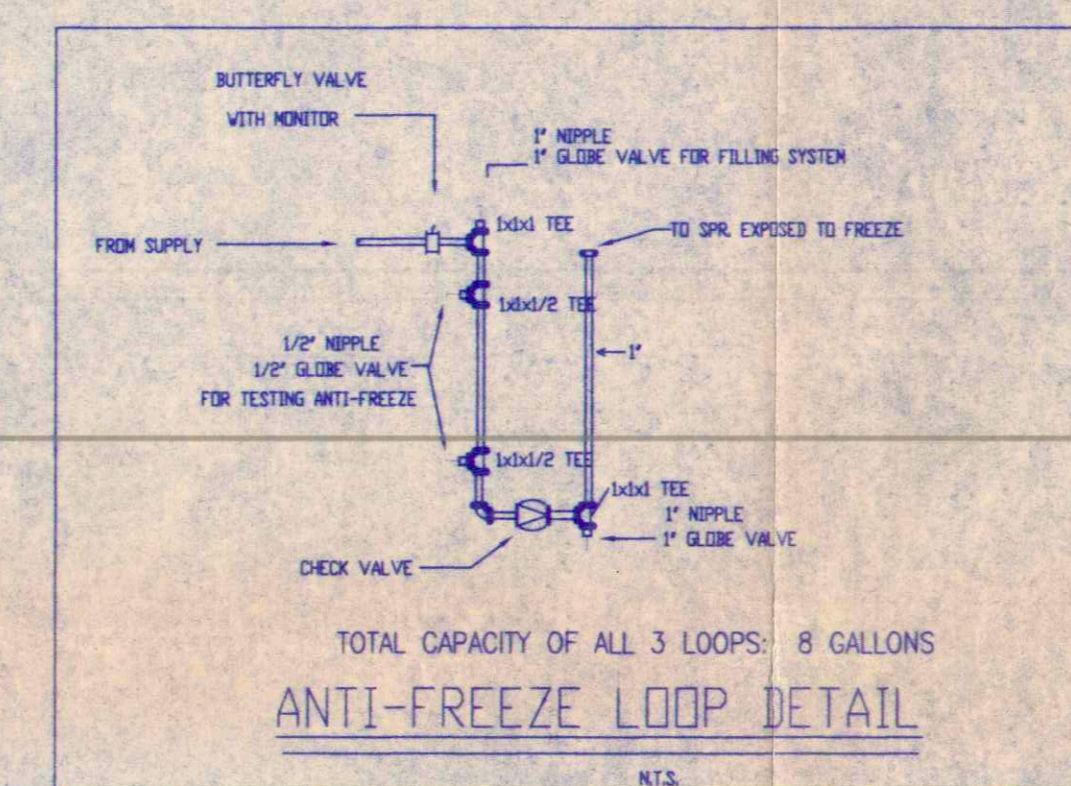
3RD FLOOR SPRINKLER PLAN
SCALE: 1/8" = 1'-0"



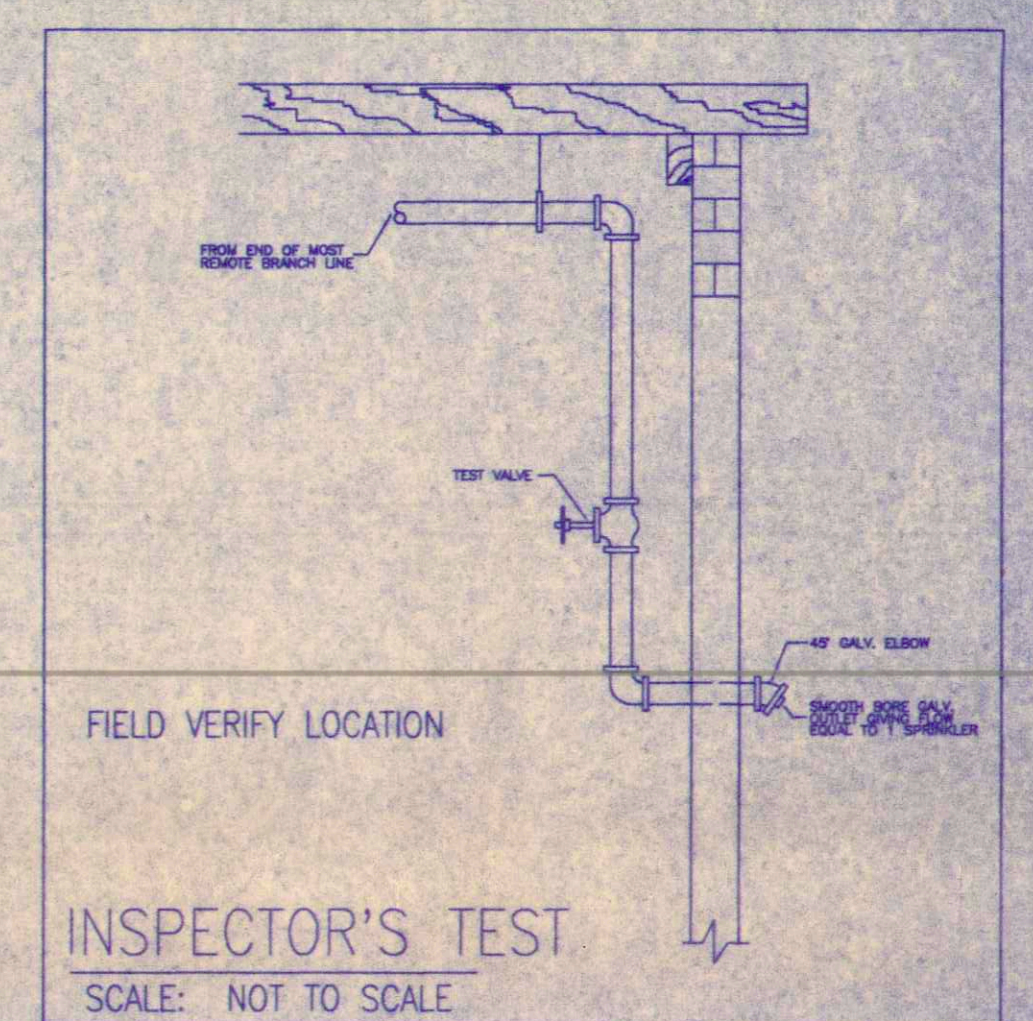
SECTION A
SCALE: 1/8" = 1'-0"



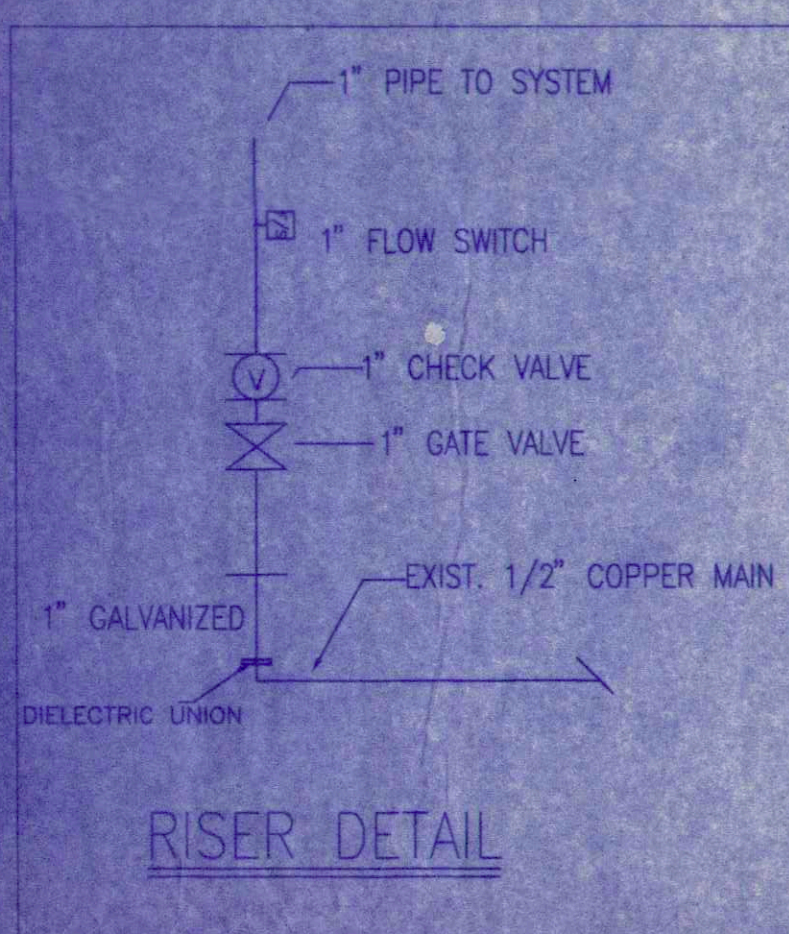
PLOT PLAN
SCALE: 1/8" = 1'-0"



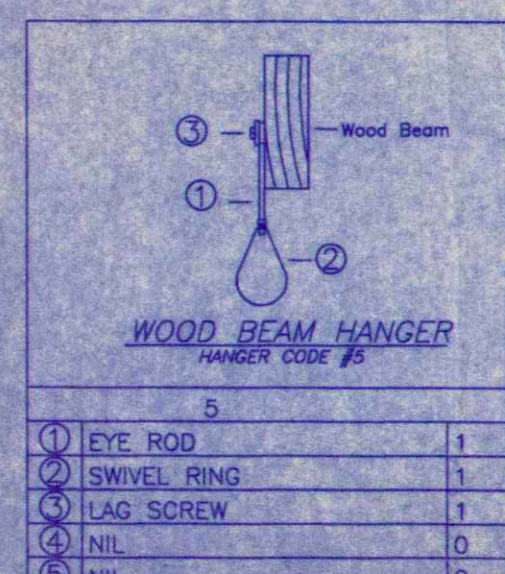
ANTI-FREEZE LOOP DETAIL
N.T.S.



INSPECTOR'S TEST
SCALE: NOT TO SCALE



RISER DETAIL

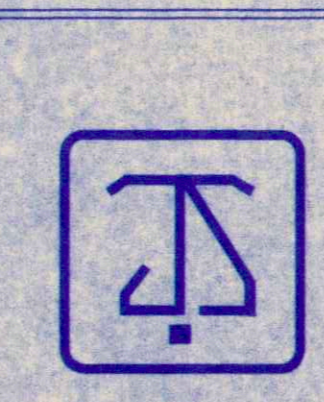


WOOD BEAM HANGER
HANGER SCREW #8

| HYDRAULIC DESIGN DATA | | | |
|-----------------------|---------------------|---------------------|---------------------|
| Calculation # | 1 | 2 | 3 |
| Hazard Class | | | |
| Hazard Class | | | |
| System Type | | | |
| Density | GPM/ft ² | GPM/ft ² | GPM/ft ² |
| Calculated Area | ft ² | ft ² | ft ² |
| Area per Sprinkler | ft ² | ft ² | ft ² |
| Demand | GPM | GPM | GPM |
| Flow Test Info | Firepumps: NA | GPM: NA | Pa: Date: 10/5/01 |
| Locations AT SITE | | | Time: 9:00 am |
| Office Size | No. of Outlet | Pilot Press Pa | Static Pa |
| 1 | 49 | 41 | 1480 |
| 2 | | | |
| 3 | | | |
| | | | Flow GPM |
| | | | U/G Pipes |
| | | | SAFETY (PSI) |

| CONTRACTOR: MARION B. REAL ESTATE | |
|-----------------------------------|----------|
| ADDRESS: SUDELL, LA | |
| DATE | REVISION |
| DESCRIPTION | BY |
| | |
| | |

| SPRINKLER SCHEDULE & LEGEND | | | | | |
|---|---------------------------------------|--------|------|--------|-----|
| SYMBOL | SPRINKLER DESCRIPTION | OFFICE | TEMP | FINISH | QTY |
| ⊙ | AUTOMATIC *HR-2* RESIDENTIAL SOW2/16" | 4.0 | 155+ | CHR | 15 |
| 6 HEAD CABT & WRENCH(ES) PROVIDED TOTAL COUNT THIS SHEET = 15 | | | | | |



GRAND LAGOON CONDOS
1141-1163 MARINA DRIVE SLIDELL, LA
SPRINKLER PLAN

JEFFERSON SPRINKLER, INC.
"Fire Protection Specialist"

1903 Hancock St. P O Box 129 Gretna, La.
PHONE 504-393-7899 FAX 504-367-0216

| NORTH | |
|-------------|--------------|
| DESIGNER | S. ENO |
| SCALE | 1/8" = 1'-0" |
| CHECK BY | |
| FILE NUMBER | |
| APPROVAL | |
| DATE | |
| DRAWING NO. | |

APPROVED APPROVED AS NOTED REVISE AND RESUBMIT REJECTED

Approval by the Architect is for compatibility with the general design concept of the project only and does not relieve the Contractor of his responsibility for compliance with the original contract conditions and the project, they shall be corrected by the Contractor at no cost to the Architect and Designer.

Shop drawings are not checked for quantities of materials or number of items supplied. This shall be the responsibility of the Contractor.

By: *Robert H. Qualey*
Date: *08.24.02*
ROBERT H. QUALEY
Architect/Associate

Note: Prior to installation vendor to coordinate installation all activities w/ Architect/Management Co.