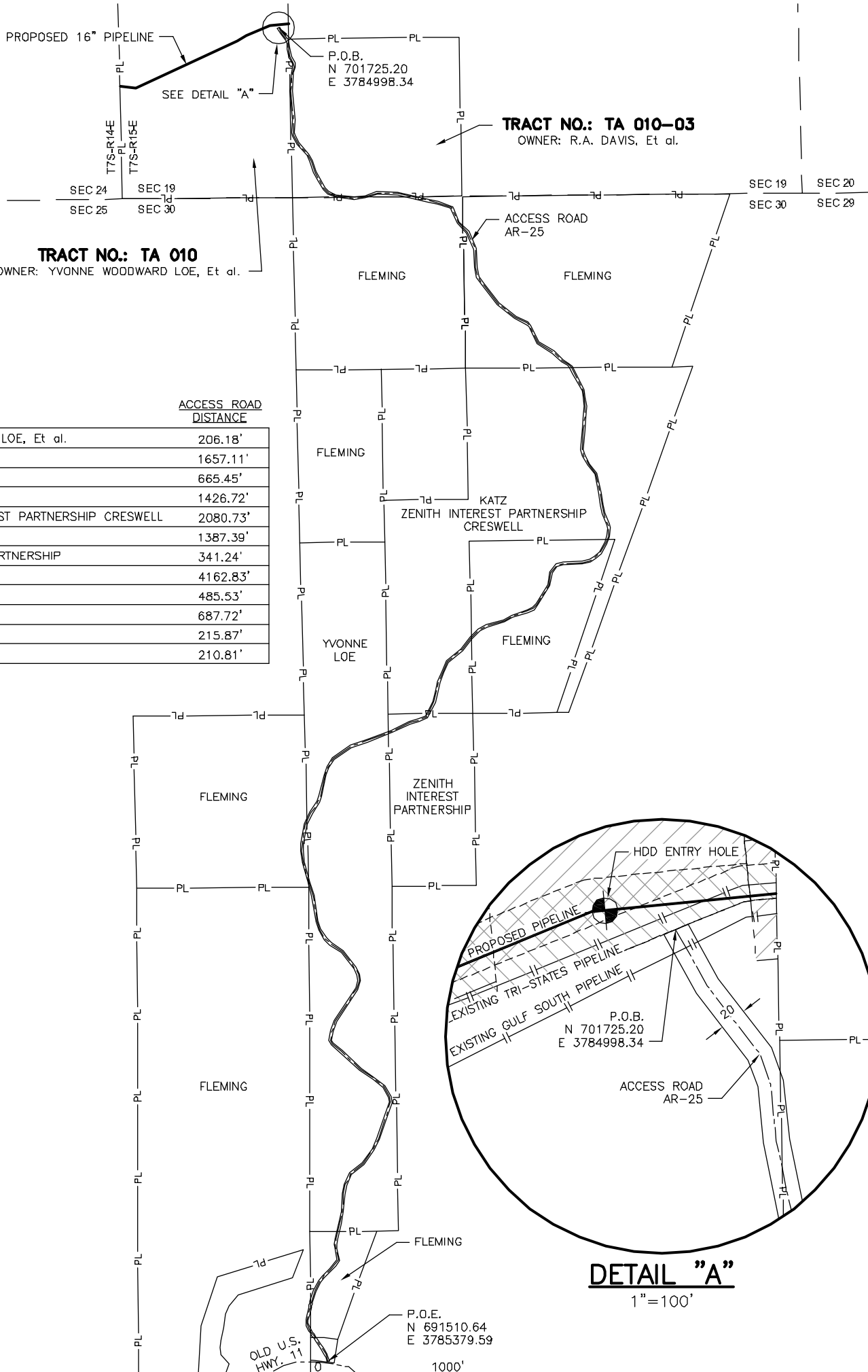
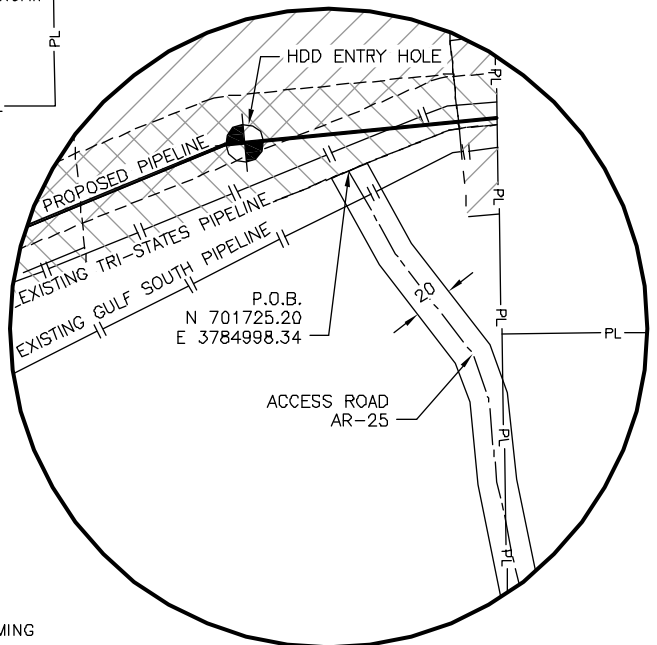


EXHIBT "A"
SECTION 19, 30 & 31, T-7-S, R-15-E
ST. TAMMANY PARISH, LOUISIANA



LANDOWNER	ACCESS ROAD DISTANCE
YVONNE WOODWARD LOE, Et al.	206.18'
R.A. DAVIS, Et al.	1657.11'
FLEMING	665.45'
FLEMING	1426.72'
KATZ ZENITH INTEREST PARTNERSHIP CRESWELL	2080.73'
FLEMING	1387.39'
ZENITH INTEREST PARTNERSHIP	341.24'
YVONNE LOE	4162.83'
FLEMING	485.53'
FLEMING	687.72'
FLEMING	215.87'
FLEMING	210.81'



NOTE:
1. COORDINATES SHOWN ARE RELATIVE TO LOUISIANA STATE PLANE COORDINATE SYSTEM, NORTH AMERICAN DATUM 1983, SOUTHERN ZONE, U.S. FOOT.



SYSTEM: TRI-STATES NGL
SEGMENT/FACILITY: KILN TO MANDEVILLE

US Pipelines & Logistics
ENGINEERING AND MAINTENANCE DEPARTMENT
28100 TORCH PARKWAY
WARRENVILLE, ILLINOIS 60555

PROPOSED ACCESS ROAD
PROPOSED ACCESS ROAD 25
ST. TAMMANY PARISH, LOUISIANA

TOTAL DISTANCE ACROSS PROPERTY: 13527.58'

NO.	REVISION	DATE	BY	CK'D	APPD.
B	ISSUED FOR ACQUISITION	7/8/11	JAF	JW	JC
A	ISSUED FOR CLIENT APPROVAL	6/13/11	JAF	JW	JC
P1	ISSUED FOR INTERNAL REVIEW	6/13/11	JAF	JW	JC

DIAGRAM	DATE

STATE	LOUISIANA	PARISH	ST. TAMMANY	TOWNSHIP	7 SOUTH
DRAWN BY	JAF	DATE	6/8/11	SCALE	AS NOTED
ALTERNATE DRAWING #			BP DRAWING #		
B0014-19-051314-0270					