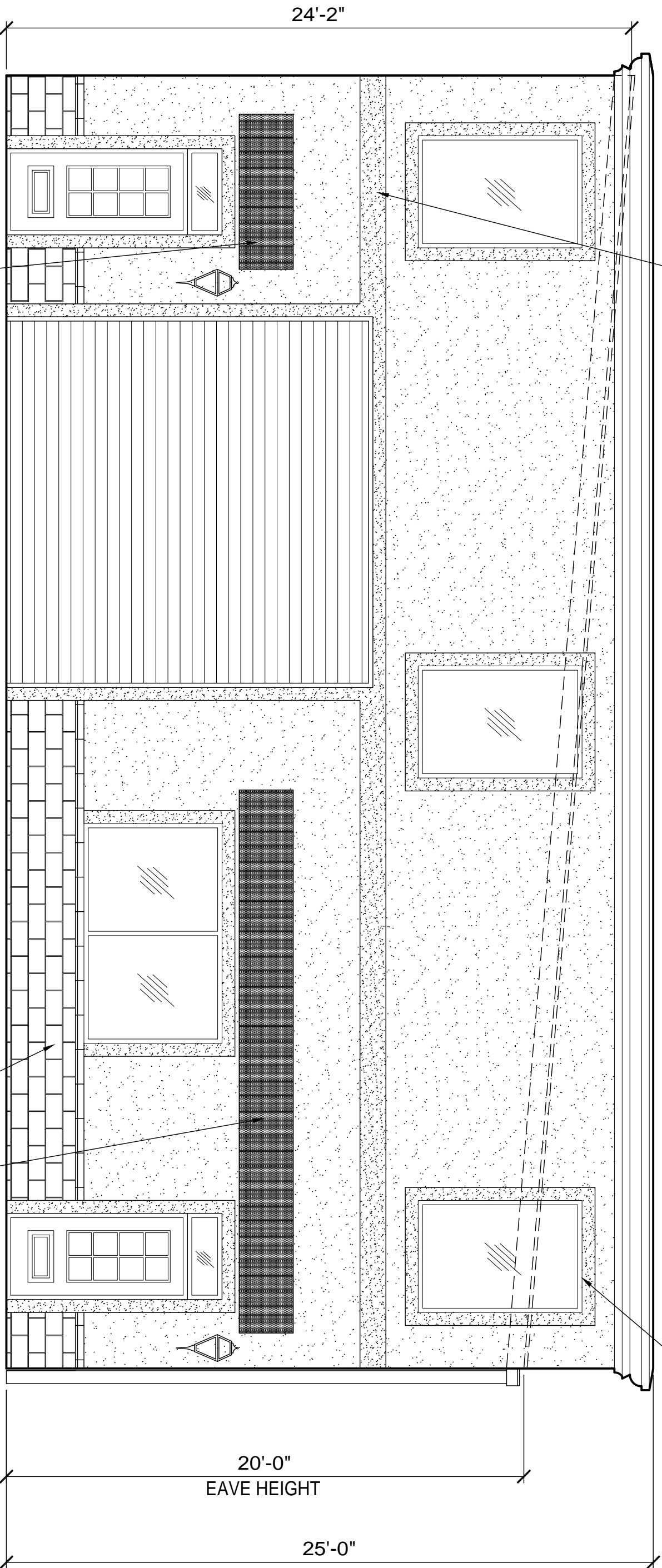


STUCCO BANDING, PROJECT 1"
FROM FACE OF STUCCO WALL
TOP EDGE TO BE SLOPED. (TYP)



6' DECORATIVE CANVAS
AWNING BY OTHERS

FRONT ELEVATION OPTION "A"

SCALE: 1/4" = 1'-0"

SCORED STUCCO

21' DECORATIVE CANVAS
AWNING BY OTHERS

20'-0"
EAVE HEIGHT

25'-0"

6" THICK PARAPET WALL