

**DAMMON**  
ENGINEERING, INC

CHIEF ENGINEER  
EMMETT  
DAMMON, P.E.

CHIEF ARCHITECT  
ROBERT  
WILTSE

1095 FLORIDA AVENUE  
SLIDELL, LA, 70458  
OFFICE: 985-649-5832  
FAX: 985-641-5950

WEBSITE:  
WWW.DAMMONENGINEERING.COM  
EMAIL:  
DAMMONENG@BELLSOUTH.NET

ARCHITECTURE  
ENGINEERING  
STUDIES  
PLANNING  
INVESTIGATION  
EXPERT WITNESS

J D PLAZA  
345 GAUSE  
BOULEVARD  
WEST  
SLIDELL, LA

EXTERIOR  
ELEVATIONS

REV:

SCALE: AS NOTED

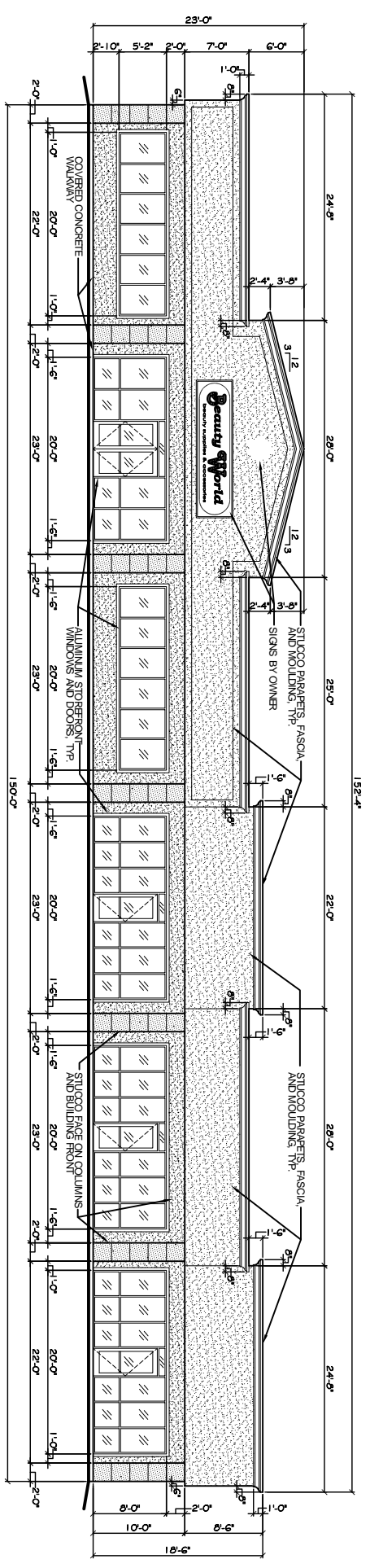
JOB#: 2037

DATE: 10-01-09

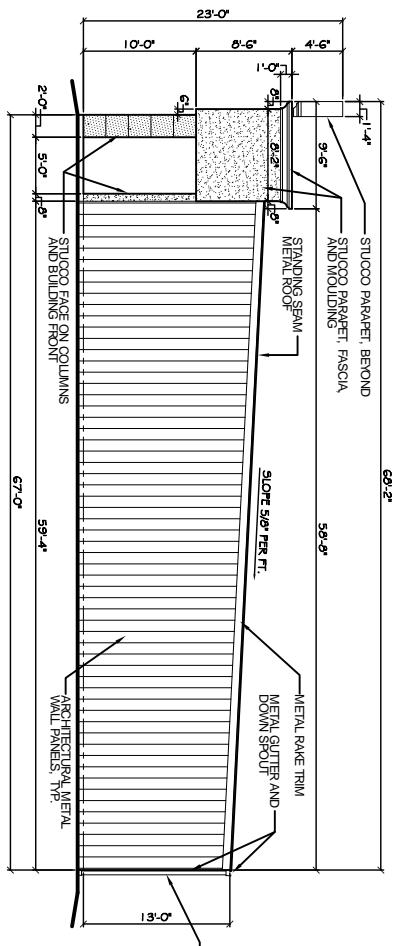
SHEET 11

A-3

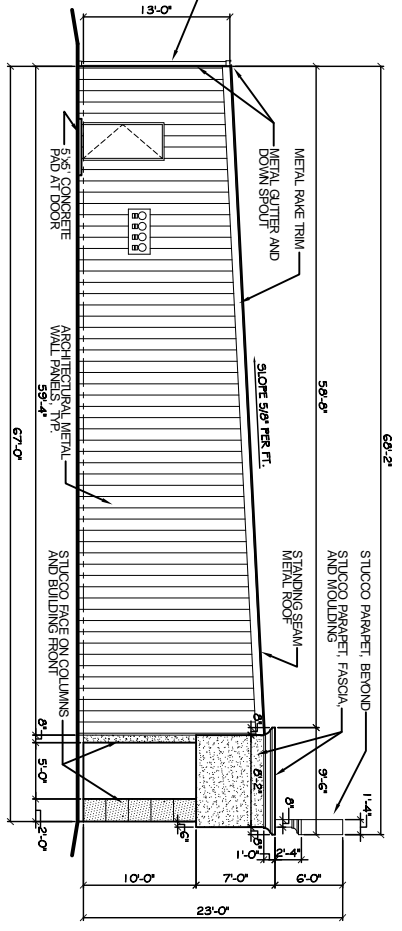
OF 19



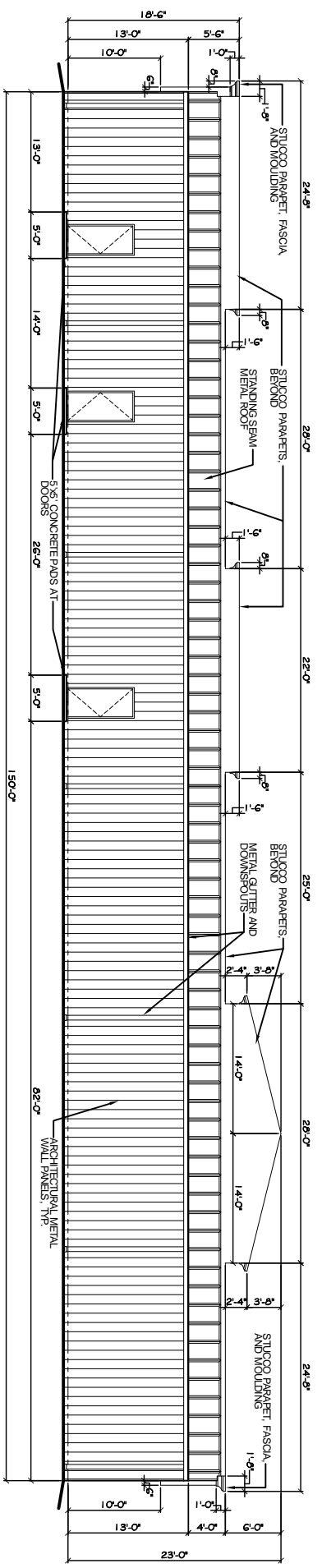
**NORTH ELEVATION**  
SCALE: 1/8" = 1'



**WEST ELEVATION**  
SCALE: 1/8" = 1'



**EAST ELEVATION**  
SCALE: 1/8" = 1'



**SOUTH ELEVATION**  
SCALE: 1/8" = 1'