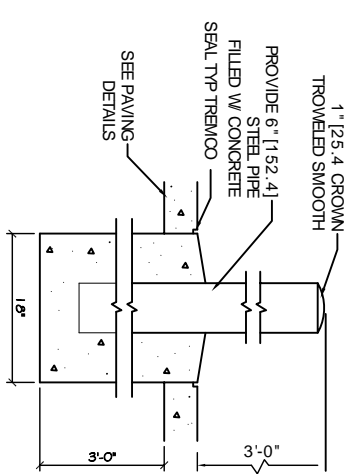


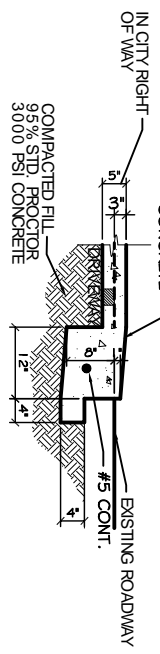
**SITE PAVING PLAN**  
SCALE 1"=20'

**LEGEND:**

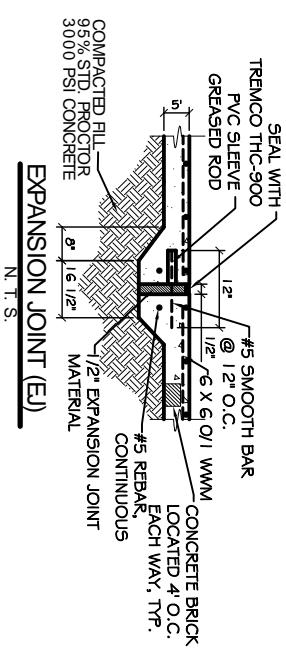
- PROPERTY LINE
- UTILITY / EASEMENT LINE
- BUILDING SETBACK MINIMUM
- LANDSCAPING SETBACK MINIMUM AND BUFFER ZONE LIMITS AT REAR
- NEW BUILDING
- NEW DROP INLET w/TEMP. SILT FENCING
- CONTROL JOINT
- EXPANSION JOINT
- T.O. GRATE ELEVATION
- INVERT ELEVATION
- NEW ELEVATIONS
- EXISTING ELEVATIONS
- NEW 6" CURB, SEE DETAIL THIS SHEET



**PIPE BOLLARD DETAIL**  
N.T.S.

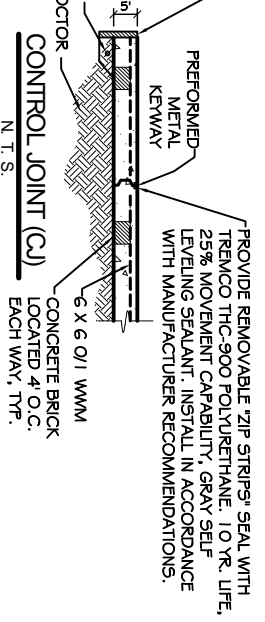


**DRIVEMWAY SECTION (DS)**  
N.T.S.

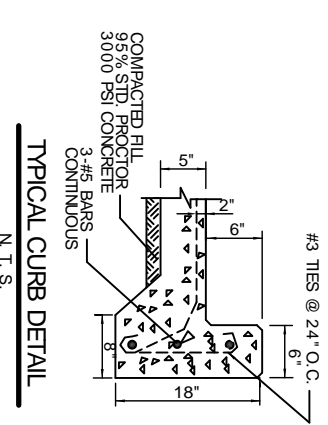


**EXPANSION JOINT (E)**  
N.T.S.

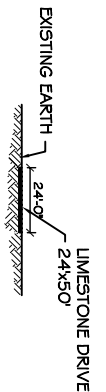
AT EDGES OR ADJOINING BUILDING OR OTHER PAVING PROVIDE 8%<sup>2</sup> TURNDOWN WITH 1 #5 ROD CONT.



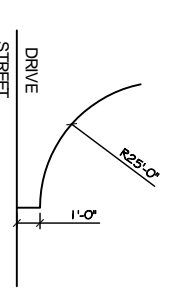
**CONTROL JOINT (C)**  
N.T.S.



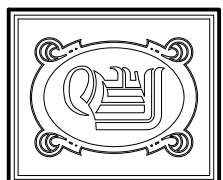
**TYPICAL CURB DETAIL**  
N.T.S.



**TEMP. ENTRANCE DETAIL**  
N.T.S.



**TYPICAL ENTRANCE DETAIL**  
N.T.S.



**DAMMON ENGINEERING, INC.**

CHIEF ENGINEER  
EMMETT DAMMON, P.E.  
CHIEF ARCHITECT  
ROBERT WILTSE

1095 FLORIDA AVENUE  
SUDDILL, LA. 70456  
OFFICE: 985-649-5832  
FAX: 985-641-5950

WWW.DAMMONENGINEERING.COM  
EMAIL: DAMMONENG@BELL.SOUTH.NET

ARCHITECTURE  
ENGINEERING  
STUDIES  
PLANNING  
INVESTIGATION  
EXPERT WITNESS

J D PLAZA  
345 GAUSE  
BOULEVARD  
WEST  
SUDDILL LA

SITE  
PAVING  
PLAN

REV:

SCALE: AS NOTED

JOB#: 2037

DATE: 10-01-09

SHEET 6

**C-5**

OF 19