

4.16 WATER CLOSETS.

- 4.16.1 GENERAL. ACCESSIBLE WATER CLOSETS SHALL COMPLY WITH 4.16.
- 4.16.2 CLEAR FLOOR SPACE. CLEAR FLOOR SPACE FOR WATER CLOSETS SHALL COMPLY WITH 4.16.2.1 THROUGH 4.16.2.4.
- 4.16.2.1 GENERAL. THE HEIGHT OF WATER CLOSETS SHALL BE 17" TO 18" (430mm to 457mm).
- 4.16.2.2 TOILET SEAT. TOILET SEAT SHALL NOT BE SPRUNG TO RETURN TO A UPRISED POSITION (SEE FIG. 31).
- 4.16.2.3 GROUND BARS. GROUND BARS BEHIND WATER CLOSETS MUST BE LOCATED IN SUCH A MANNER AS TO NOT INTERFERE WITH THE USE OF THE TOILET SEAT. THE GROUND BAR SHALL BE 2" (51mm) MINIMUM ABOVE THE FINISHED FLOOR.
- 4.16.2.4 FLOOR CONTROLS. FLOOR CONTROLS SHALL BE HAND OPERATED ON ALTERNATE SIDE OF TOILET SEAT NO MORE THAN 4" (103mm) ABOVE THE FLOOR.
- 4.16.3 OPERATIONS. TOILET PAPER DISPENSERS SHALL BE MOUNTED WITHIN REACH, AS SHOWN IN FIG. 31. TOILET PAPER SHALL NOT BE USED.

4.17 TOILET STALLS.

- 4.17.1 LOCATION. ACCESSIBLE TOILET STALLS SHALL BE ON AN ACCESSIBLE ROUTE AND SHALL MEET THE REQUIREMENTS OF 4.17.
- 4.17.2 WATER CLOSETS. WATER CLOSETS IN ACCESSIBLE STALLS SHALL COMPLY WITH 4.16.
- 4.17.3 OPERATIONS AND MAINTENANCE. THE SET AND MAINTENANCE OF THE STALLING TOILET SHALL COMPLY WITH 4.16.2.1 THROUGH 4.16.2.4.
- 4.17.4 CLEAR FLOOR SPACE. CLEAR FLOOR SPACE SHALL COMPLY WITH 4.16.2.1 THROUGH 4.16.2.4.
- 4.17.5 OPERATIONS. TOILET STALL DOORS INCLUDING DOOR HINGERS, SHALL COMPLY WITH 4.13.
- 4.17.6 FLOOR CONTROLS. FLOOR CONTROLS SHALL BE HAND OPERATED ON ALTERNATE SIDE OF TOILET SEAT NO MORE THAN 4" (103mm) ABOVE THE FLOOR.
- 4.17.7 OPERATIONS. TOILET STALL DOORS INCLUDING DOOR HINGERS, SHALL COMPLY WITH 4.13.
- 4.17.8 OPERATIONS. TOILET STALL DOORS INCLUDING DOOR HINGERS, SHALL COMPLY WITH 4.13.

4.18 URINALS.

- 4.18.1 GENERAL. ACCESSIBLE URINALS SHALL COMPLY WITH 4.18.
- 4.18.2 OPERATIONS. URINALS SHALL BE WALL-TYPE OR WALL-HUNG WITH AN EXPANDED REAR AT A MINIMUM OF 17" (430mm) ABOVE THE FINISHED FLOOR.
- 4.18.3 CLEAR FLOOR SPACE. CLEAR FLOOR SPACE SHALL COMPLY WITH 4.16.2.1 THROUGH 4.16.2.4.
- 4.18.4 OPERATIONS. URINALS SHALL BE WALL-TYPE OR WALL-HUNG WITH AN EXPANDED REAR AT A MINIMUM OF 17" (430mm) ABOVE THE FINISHED FLOOR.
- 4.18.5 OPERATIONS. URINALS SHALL BE WALL-TYPE OR WALL-HUNG WITH AN EXPANDED REAR AT A MINIMUM OF 17" (430mm) ABOVE THE FINISHED FLOOR.

4.19 LAVATORIES & MIRRORS.

- 4.19.1 GENERAL. THE REQUIREMENTS OF 4.19 SHALL APPLY TO LAVATORY FIXTURES, VANITIES, AND BATHING LAVATORIES.
- 4.19.2 OPERATIONS. LAVATORIES SHALL BE MOUNTED WITH THE FINISHED FLOOR SURFACE AT LEAST 27" (686mm) ABOVE THE FINISHED FLOOR. PROVIDE A CLEARANCE OF AT LEAST 27" (686mm) ABOVE THE FINISHED FLOOR TO THE BOTTOM OF THE FIXTURE (SEE FIG. 31).
- 4.19.3 CLEAR FLOOR SPACE. A CLEAR FLOOR SPACE 30" BY 48" (762mm BY 1219mm) SHALL BE PROVIDED IN FRONT OF LAVATORIES AND MIRRORS. APPROXIMATELY 12" (305mm) OF THIS SPACE SHALL BE PROVIDED IN FRONT OF LAVATORIES TO ALLOW FORWARD APPROACH. SUCH CLEAR FLOOR SPACE SHALL ADJOIN OR OVERLAP AN ACCESSIBLE ROUTE AND SHALL EXTEND A MINIMUM OF 19" (483mm) UNDERNEATH THE LAVATORY.
- 4.19.4 OPERATIONS. LAVATORIES SHALL COMPLY WITH 4.16.2.1 THROUGH 4.16.2.4.
- 4.19.5 OPERATIONS. LAVATORIES SHALL COMPLY WITH 4.16.2.1 THROUGH 4.16.2.4.
- 4.19.6 OPERATIONS. LAVATORIES SHALL COMPLY WITH 4.16.2.1 THROUGH 4.16.2.4.

4.20 BATHTUBS.

- 4.20.1 GENERAL. ACCESSIBLE BATHTUBS SHALL COMPLY WITH 4.20.
- 4.20.2 OPERATIONS. CLEAR FLOOR SPACE IN FRONT OF BATHTUBS SHALL COMPLY WITH 4.20.
- 4.20.3 OPERATIONS. CLEAR FLOOR SPACE IN FRONT OF BATHTUBS SHALL COMPLY WITH 4.20.
- 4.20.4 OPERATIONS. CLEAR FLOOR SPACE IN FRONT OF BATHTUBS SHALL COMPLY WITH 4.20.
- 4.20.5 OPERATIONS. CLEAR FLOOR SPACE IN FRONT OF BATHTUBS SHALL COMPLY WITH 4.20.

4.21 SHOWER STALLS.

- 4.21.1 GENERAL. ACCESSIBLE SHOWER STALLS SHALL COMPLY WITH 4.21.
- 4.21.2 OPERATIONS. SHOWER STALLS SHALL COMPLY WITH 4.21.
- 4.21.3 OPERATIONS. SHOWER STALLS SHALL COMPLY WITH 4.21.
- 4.21.4 OPERATIONS. SHOWER STALLS SHALL COMPLY WITH 4.21.
- 4.21.5 OPERATIONS. SHOWER STALLS SHALL COMPLY WITH 4.21.

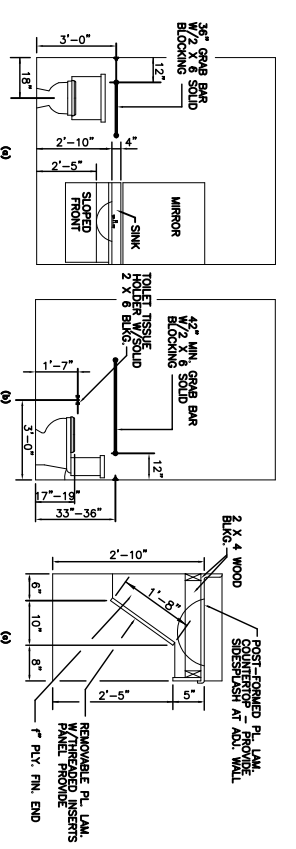


FIG. 31 LAVATORY & WATER CLOSET CLEARANCES

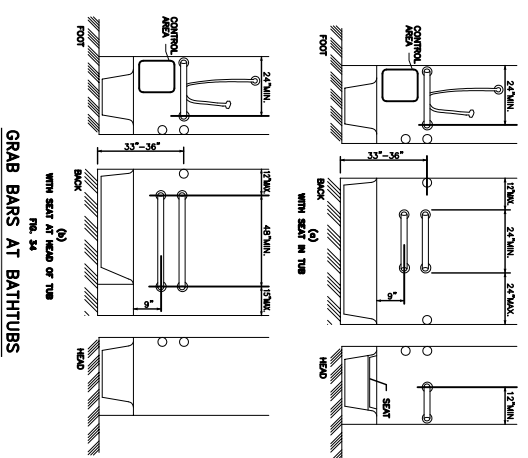


FIG. 34 GRAB BARS AT BATHTUBS

4.22 TOILET ROOMS.

- 4.22.1 GENERAL. TOILET ROOMS SHALL COMPLY WITH 4.16.2.1 THROUGH 4.16.2.4.
- 4.22.2 OPERATIONS. TOILET ROOMS SHALL COMPLY WITH 4.16.2.1 THROUGH 4.16.2.4.
- 4.22.3 OPERATIONS. TOILET ROOMS SHALL COMPLY WITH 4.16.2.1 THROUGH 4.16.2.4.
- 4.22.4 OPERATIONS. TOILET ROOMS SHALL COMPLY WITH 4.16.2.1 THROUGH 4.16.2.4.

4.23 BATHROOM, BATHING FACILITIES, AND SHOWER ROOMS.

- 4.23.1 GENERAL. BATHROOMS, BATHING FACILITIES, AND SHOWER ROOMS SHALL COMPLY WITH 4.23.1 THROUGH 4.23.4.
- 4.23.2 OPERATIONS. BATHROOMS, BATHING FACILITIES, AND SHOWER ROOMS SHALL COMPLY WITH 4.23.1 THROUGH 4.23.4.
- 4.23.3 OPERATIONS. BATHROOMS, BATHING FACILITIES, AND SHOWER ROOMS SHALL COMPLY WITH 4.23.1 THROUGH 4.23.4.
- 4.23.4 OPERATIONS. BATHROOMS, BATHING FACILITIES, AND SHOWER ROOMS SHALL COMPLY WITH 4.23.1 THROUGH 4.23.4.

4.25 STORAGE.

- 4.25.1 GENERAL. FIXED STORAGE FIXTURES SUCH AS CABINETS, SHELVES, CLOSETS, AND DRAWERS REQUIRED TO BE ACCESSIBLE BY 4.1 SHALL COMPLY WITH 4.25.
- 4.25.2 OPERATIONS. FIXED STORAGE FIXTURES SUCH AS CABINETS, SHELVES, CLOSETS, AND DRAWERS REQUIRED TO BE ACCESSIBLE BY 4.1 SHALL COMPLY WITH 4.25.
- 4.25.3 OPERATIONS. FIXED STORAGE FIXTURES SUCH AS CABINETS, SHELVES, CLOSETS, AND DRAWERS REQUIRED TO BE ACCESSIBLE BY 4.1 SHALL COMPLY WITH 4.25.

4.26 HANDRAILS, GRAB BARS, AND TUB AND SHOWER SEATS.

- 4.26.1 GENERAL. HANDRAILS, GRAB BARS, AND TUB AND SHOWER SEATS SHALL COMPLY WITH 4.26.1 THROUGH 4.26.4.
- 4.26.2 OPERATIONS. HANDRAILS, GRAB BARS, AND TUB AND SHOWER SEATS SHALL COMPLY WITH 4.26.1 THROUGH 4.26.4.
- 4.26.3 OPERATIONS. HANDRAILS, GRAB BARS, AND TUB AND SHOWER SEATS SHALL COMPLY WITH 4.26.1 THROUGH 4.26.4.
- 4.26.4 OPERATIONS. HANDRAILS, GRAB BARS, AND TUB AND SHOWER SEATS SHALL COMPLY WITH 4.26.1 THROUGH 4.26.4.

4.27 CONTROLS AND OPERATING MECHANISMS.

- 4.27.1 GENERAL. CONTROLS AND OPERATING MECHANISMS REQUIRED TO BE ACCESSIBLE BY 4.1 SHALL COMPLY WITH 4.27.
- 4.27.2 OPERATIONS. CONTROLS AND OPERATING MECHANISMS REQUIRED TO BE ACCESSIBLE BY 4.1 SHALL COMPLY WITH 4.27.
- 4.27.3 OPERATIONS. CONTROLS AND OPERATING MECHANISMS REQUIRED TO BE ACCESSIBLE BY 4.1 SHALL COMPLY WITH 4.27.

4.28 ALARMS.

- 4.28.1 GENERAL. ALARM SYSTEMS REQUIRED TO BE ACCESSIBLE BY 4.1 SHALL COMPLY WITH 4.28.
- 4.28.2 OPERATIONS. ALARM SYSTEMS REQUIRED TO BE ACCESSIBLE BY 4.1 SHALL COMPLY WITH 4.28.
- 4.28.3 OPERATIONS. ALARM SYSTEMS REQUIRED TO BE ACCESSIBLE BY 4.1 SHALL COMPLY WITH 4.28.

4.29 TACTILE WARNINGS.

- 4.29.1 GENERAL. TACTILE WARNINGS REQUIRED TO BE ACCESSIBLE BY 4.1 SHALL COMPLY WITH 4.29.
- 4.29.2 OPERATIONS. TACTILE WARNINGS REQUIRED TO BE ACCESSIBLE BY 4.1 SHALL COMPLY WITH 4.29.
- 4.29.3 OPERATIONS. TACTILE WARNINGS REQUIRED TO BE ACCESSIBLE BY 4.1 SHALL COMPLY WITH 4.29.

4.30 SIGNAGE.

- 4.30.1 GENERAL. SIGNAGE REQUIRED TO BE ACCESSIBLE BY 4.1 SHALL COMPLY WITH 4.30.
- 4.30.2 OPERATIONS. SIGNAGE REQUIRED TO BE ACCESSIBLE BY 4.1 SHALL COMPLY WITH 4.30.
- 4.30.3 OPERATIONS. SIGNAGE REQUIRED TO BE ACCESSIBLE BY 4.1 SHALL COMPLY WITH 4.30.

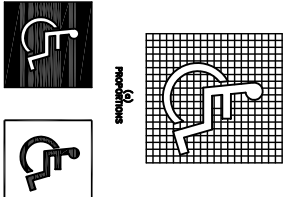


FIG. 43 INTERNATIONAL SYMBOL OF ACCESSIBILITY

4.31 TELEPHONES.

- 4.31.1 GENERAL. PUBLIC TELEPHONES REQUIRED TO BE ACCESSIBLE BY 4.1 SHALL COMPLY WITH 4.31.
- 4.31.2 OPERATIONS. PUBLIC TELEPHONES REQUIRED TO BE ACCESSIBLE BY 4.1 SHALL COMPLY WITH 4.31.
- 4.31.3 OPERATIONS. PUBLIC TELEPHONES REQUIRED TO BE ACCESSIBLE BY 4.1 SHALL COMPLY WITH 4.31.

4.32 SEATING, TABLES, AND WORK SURFACES.

- 4.32.1 GENERAL. SEATING, TABLES, AND WORK SURFACES REQUIRED TO BE ACCESSIBLE BY 4.1 SHALL COMPLY WITH 4.32.
- 4.32.2 OPERATIONS. SEATING, TABLES, AND WORK SURFACES REQUIRED TO BE ACCESSIBLE BY 4.1 SHALL COMPLY WITH 4.32.
- 4.32.3 OPERATIONS. SEATING, TABLES, AND WORK SURFACES REQUIRED TO BE ACCESSIBLE BY 4.1 SHALL COMPLY WITH 4.32.

4.33 ASSEMBLY AREAS.

- 4.33.1 GENERAL. ASSEMBLY AREAS REQUIRED TO BE ACCESSIBLE BY 4.1 SHALL COMPLY WITH 4.33.
- 4.33.2 OPERATIONS. ASSEMBLY AREAS REQUIRED TO BE ACCESSIBLE BY 4.1 SHALL COMPLY WITH 4.33.
- 4.33.3 OPERATIONS. ASSEMBLY AREAS REQUIRED TO BE ACCESSIBLE BY 4.1 SHALL COMPLY WITH 4.33.

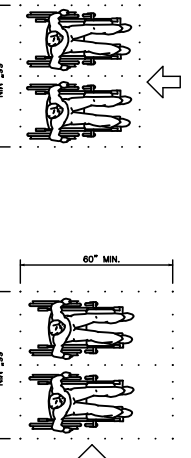


FIG. 44 SEATING REQUIREMENTS FOR WHEELCHAIR

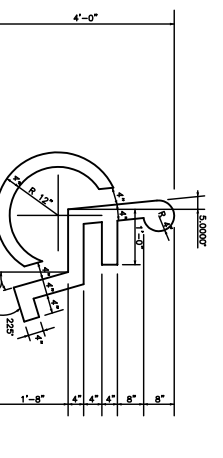
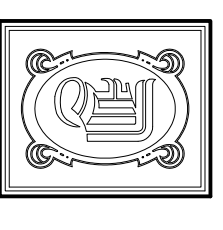


FIG. 45 EXTERIOR HANDICAP SIGN



DAMMON ENGINEERING, INC.
 CHIEF ENGINEER
 ENNETT
 DAMMON, P.E.
 CHIEF ARCHITECT
 ROBERT
 WILTSE
 1095 FLORIDA AVENUE
 SUITE 104, 70458
 OFFICE: 905-649-5932
 FAX: 905-641-5950
 WWW.DAMMONENGINEERING.COM
 W09517E
 EMAIL:
 DAMMONENR@BELL.SOUTHWEST

ARCHITECTURE
 ENGINEERING
 STUDIES
 PLANNING
 INVESTIGATION
 EXPERT WITNESS
 J D PLAZA
 345 GAUSE
 BOULEVARD
 WEST
 SUDELL, LA

HANDICAP REQUIREMENTS

REV:
 SCALE: AS NOTED
 JOB#: 2037
 DATE: 10-01-09
 SHEET 15