

DAMMON ENGINEERING, INC.

CHIEF ENGINEER
EMMETT DAMMON, P.E.

CHIEF ARCHITECT
ROBERT WILTSE

1095 FLORIDA AVENUE
SLIDELL, LA. 70458
OFFICE: 985-649-5832
FAX: 985-641-5950

WEBSITE:
WWW.DAMMONENGINEERING.COM
EMAIL:
DAMMONENG@BELLSOUTH.NET

ARCHITECTURE
ENGINEERING
STUDIES
PLANNING
INVESTIGATION
EXPERT WITNESS

J D PLAZA
345 GAUSE
BOULEVARD
WEST
SLIDELL, LA

SITE
PAVING
PLAN

REV:

SCALE: AS NOTED

JOB#: 2037

DATE: 10-29-09

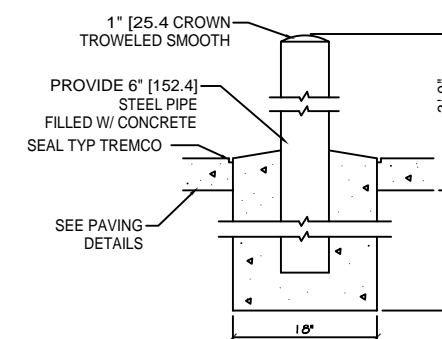
SHEET 6

C-5

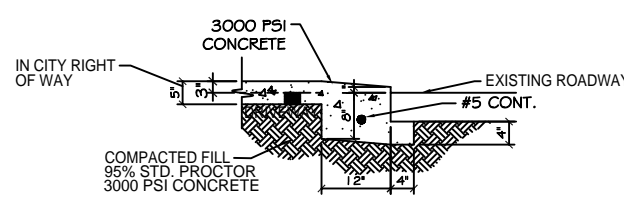
OF 19

LEGEND:

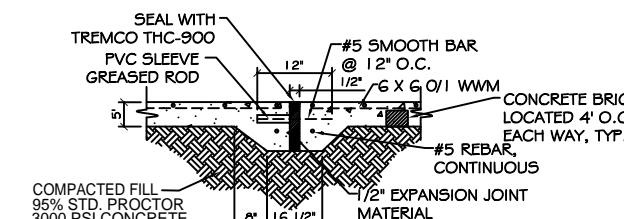
- PROPERTY LINE
- UTILITY / EASEMENT LINE
- BUILDING SETBACK MINIMUM
- LANDSCAPING SETBACK MINIMUM AND BUFFER ZONE LIMITS AT REAR
- NEW BUILDING
- NEW DROP INLET w/TEMP. SILT FENCING
- CONTROL JOINT
- EXPANSION JOINT
- T.O. GRATE ELEVATION
- ⊕ INVERT ELEVATION
- ⊕ NEW ELEVATIONS
- EL=00.00 EXISTING ELEVATIONS
- - - - - TEMPORARY SILT FENCING
- NEW 6" CURB, SEE DETAIL THIS SHEET



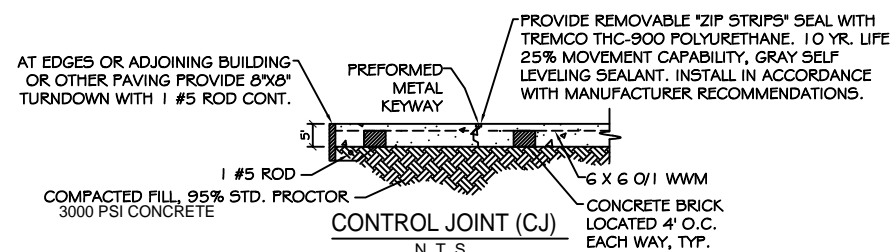
PIPE BOLLARD DETAIL
N. T. S.



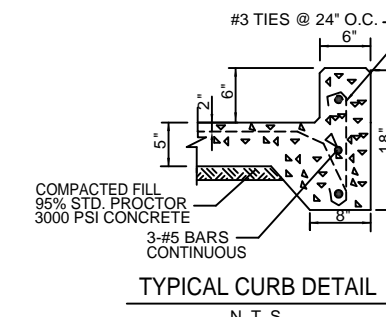
DRIVEWAY SECTION (DS)
N. T. S.



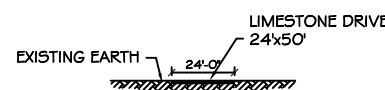
EXPANSION JOINT (EJ)
N. T. S.



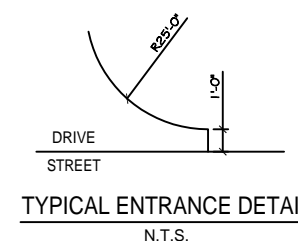
CONTROL JOINT (CJ)
N. T. S.



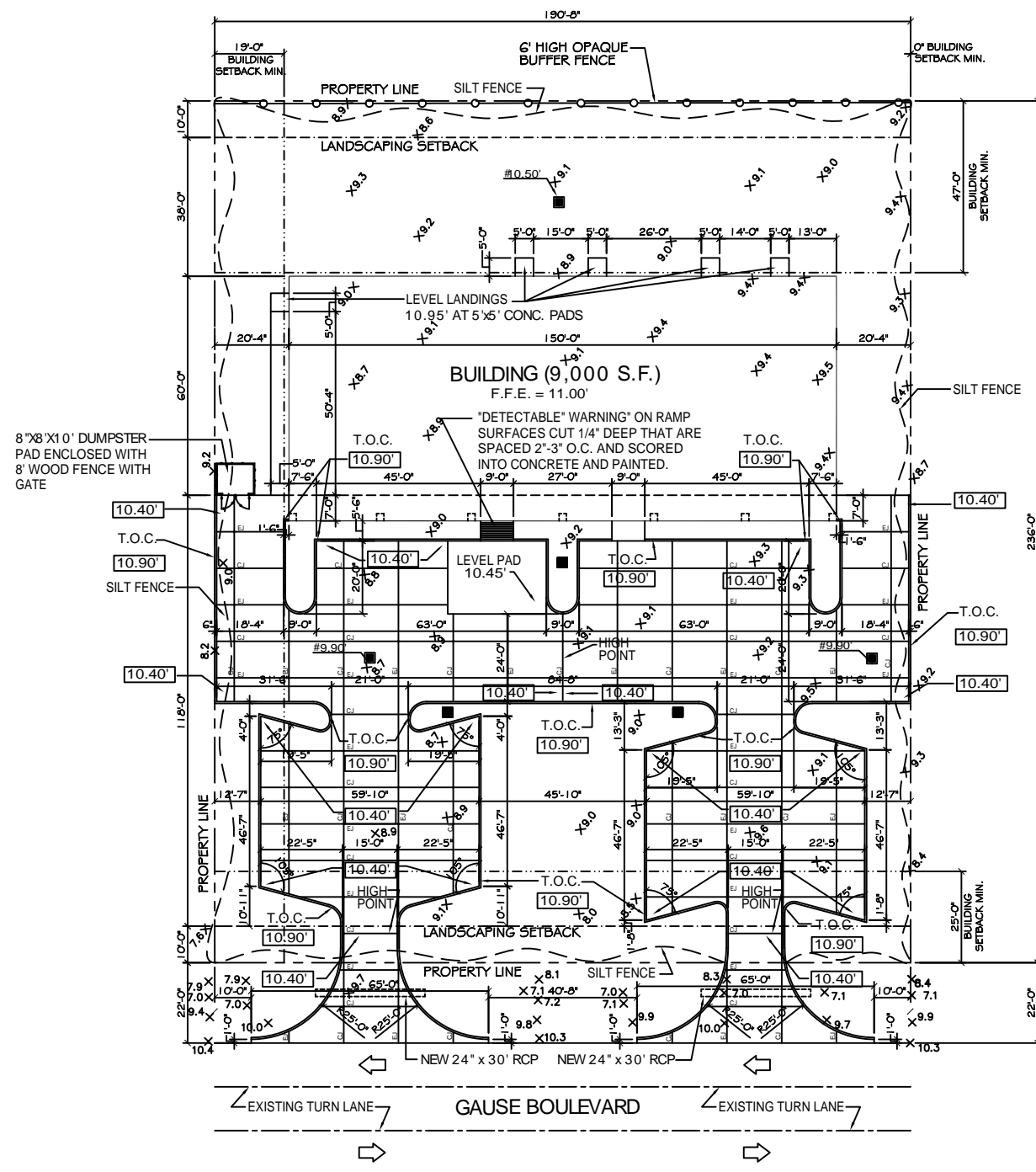
TYPICAL CURB DETAIL
N. T. S.



TEMP. ENTRANCE DETAIL
N.T.S.



TYPICAL ENTRANCE DETAIL
N.T.S.



SITE PAVING PLAN
SCALE: 1"=20'

