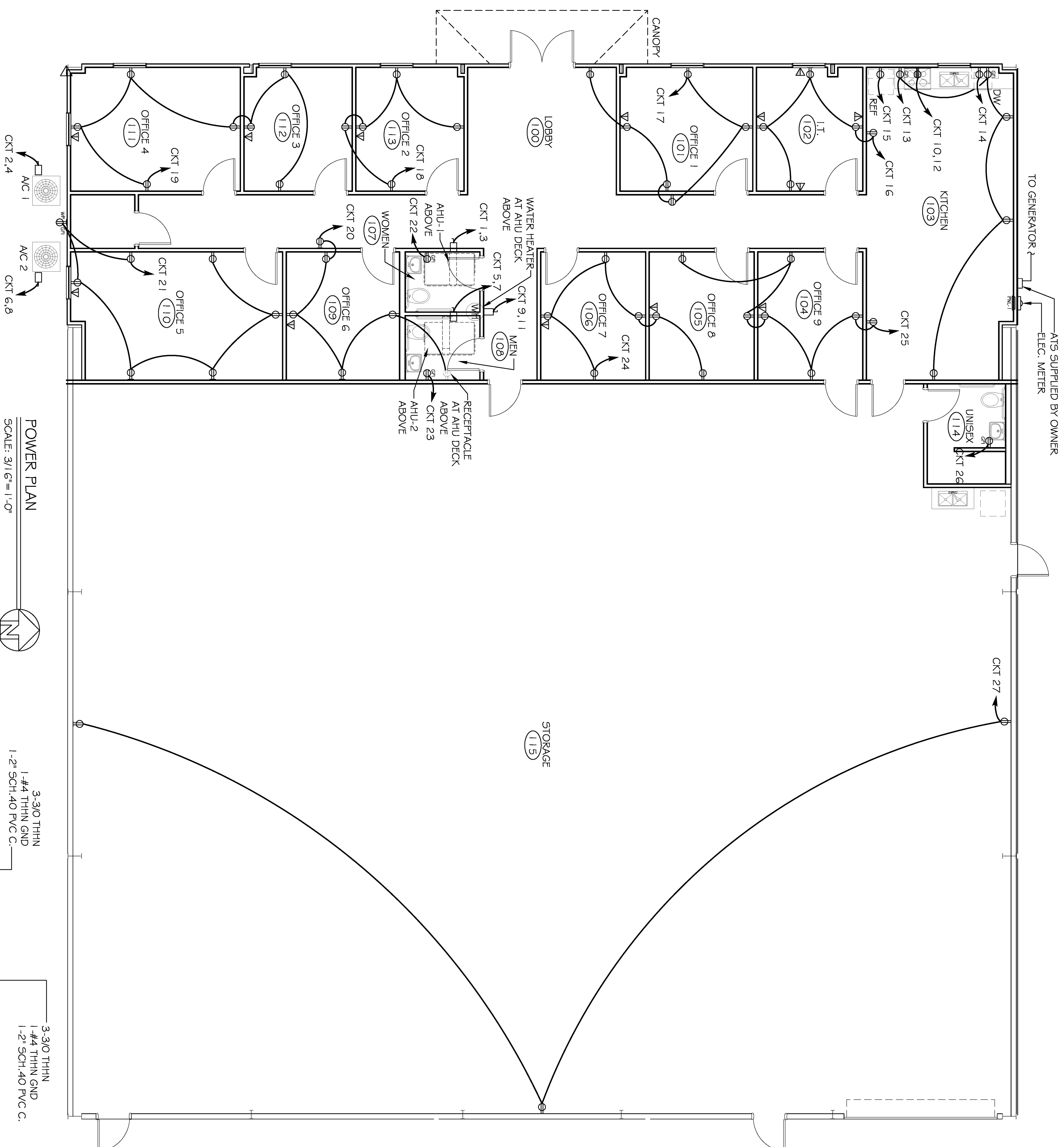


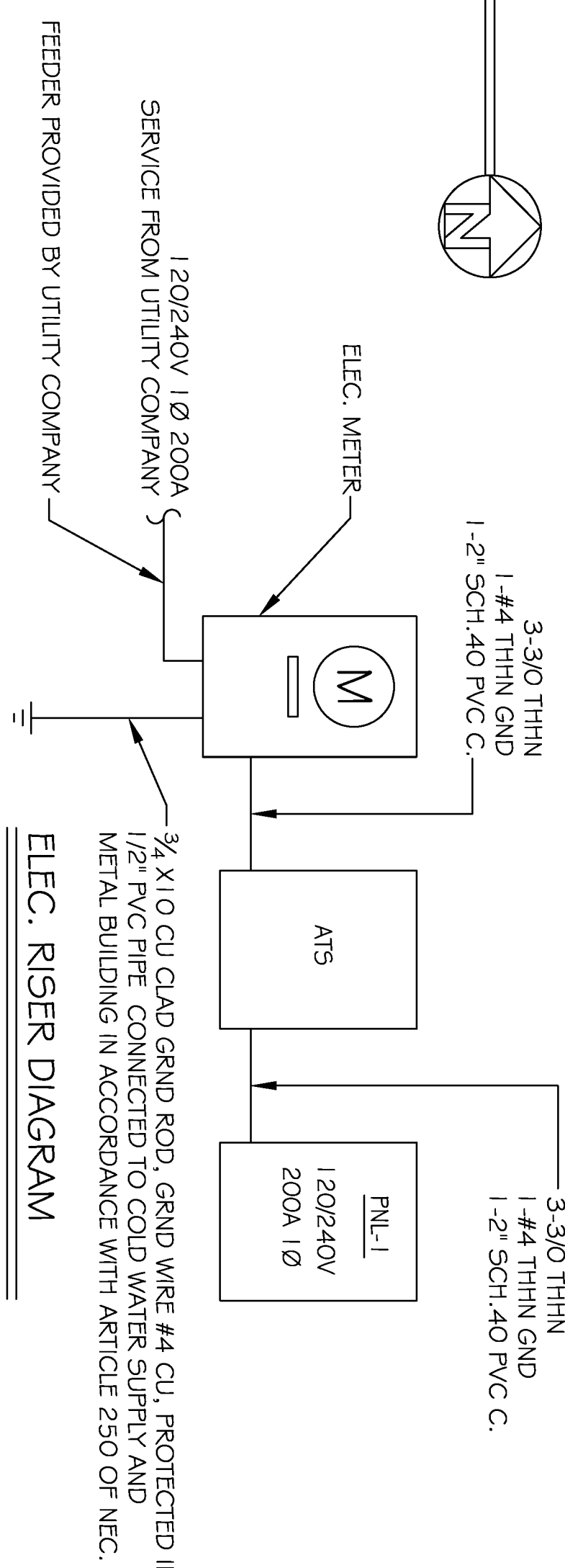
ELECTRICAL NOTES

1. ALL WORK SHALL CONFORM TO THE LATEST EDITION OF THE NATIONAL ELECTRICAL CODE, THE GOVERNING ELECTRICAL CODE AND ALL OTHER INSPECTION DEPARTMENTS HAVING JURISDICTION. OBTAIN CERTIFICATES OR APPROVAL WHERE REQUIRED.
2. ALL MATERIALS FURNISHED SHALL BE NEW AND SHALL BE U.L. LISTED.
3. THE DRAWINGS INDICATE SIZE AND GENERAL LOCATION OF WORK. SCALE DIMENSIONS SHALL NOT BE USED. THE EXACT LOCATION AND LOCATION OF ALL LIGHTING FIXTURES, RECEPTACLES AND TELEPHONE OUTLETS, ETC. SHALL BE DETERMINED BY ACTUAL CONDITIONS IN THE FIELD.
4. PRIOR TO BIDDING, CONTRACTOR SHALL VISIT THE JOB SITE AND FAMILIARIZE THEMSELVES WITH THE EXISTING CONDITIONS.
5. ELECTRICAL CONTRACTOR SHALL COORDINATE HIS WORK WITH OTHER TRADES AND WITH OTHER CONTRACTORS WHOSE WORK MAY AFFECT THIS INSTALLATION.
6. ELECTRICAL CONTRACTOR SHALL COORDINATE INCOMING ELECTRICAL SERVICE WITH UTILITY COMPANY AND INCLUDE IN HIS BID ALL CHARGES AND FEES INCURRED IN MODIFICATIONS, WHERE MORE THAN ONE SWITCH OCCURS IN THE SAME LOCATION, THEY SHALL BE INSTALLED IN A GANG TYPE BOX UNDER ONE COVER PLATE.
7. ELECTRICAL CONTRACTOR SHALL COORDINATE THE TELEPHONE INSTALLATION WITH THE TELEPHONE COMPANY AND THE GENERAL CONTRACTOR.
8. ELECTRICAL CONTRACTOR, BEFORE INSTALLING ANY OF THE WORK, SHALL SEE THAT IT DOES NOT INTERFERE WITH CLEARANCES REQUIRED FOR FINISHED COLUMNS, HUNG CEILINGS, PLASTER, PARTITIONS, WALLS, ETC. AS SHOWN IN THE ARCHITECTURAL DRAWINGS AND DETAILS. IF ANY WORK IS INSTALLED AND IT LATER DEVELOPS THAT SUCH DETAILS OR DESIGN CANNOT BE FOLLOWED, THE CONTRACTOR, AT HIS OWN EXPENSE, SHALL MAKE SUCH CHANGES IN THE WORK AS DIRECTED BY THE ARCHITECT, AS WELL AS TO PERMIT THE INSTALLATION OF THE ARCHITECTURAL WORK AS SHOWN ON THE PLANS AND DETAILS.
10. PERFORM TEST REQUIRED BY THE OWNER OR THE ENGINEER IN CONNECTION WITH THE OPERATION OF THE ELECTRICAL SYSTEM IN THE BUILDING.
11. ALL TESTS SHALL BE MADE IN ACCORDANCE WITH THE LATEST STANDARD OF THE IEEE AND THE NATIONAL ELECTRICAL CODE.
12. MINIMUM CONDUCTOR SIZE SHALL BE # 2, 600V INSULATION. MINIMUM SIZE CONDUIT SHALL BE 3/4" EMT FOR INTERIOR USE, AND 3/4" RIGID ALUMINUM FOR EXTERIOR USE. USE TYPE NMC CABLE COPPER FOR LIGHTS AND RECEPTACLE CIRCUITS. EXTERIOR FITTINGS SHALL BE CAST BOXES AND COVERS. INTERIOR FITTINGS SHALL BE CAST WHERE EXPOSED ON WALLS. STAMPED BOXES MAY BE USED ABOVE CEILINGS IN AIR CONDITIONED SPACES. WHERE LAY IN FIXTURES ARE IN USE, USE 1 1/4" 2 ALLOWED FOR 6 WIDTH.
13. CONTRACTOR SHALL INSTALL WIRING AND OTHER CIRCUIT COMPONENTS TO MATCH EQUIPMENT ACTUALLY INSTALLED.
14. INSTALL GROUND FAULT RECEPTACLES AT RECEPTACLE LOCATIONS WITHIN 5' OF SINKS OR LAVATORIES, AND AT EXTERIOR LOCATIONS. EXTERIOR RECEPTACLES SHALL ALSO BE WATERPROOF.
15. BONDING AND GROUNDING SHALL BE IN ACCORDANCE WITH NFPA 70-230-63, NFPA 250-23, 250-71 & 250-72.
16. GROUND NEUTRAL IN ACCORDANCE WITH NFPA 70-250-23B.
17. FUSES SHALL BE THE CLASS K5, 250 VOLT, 200,000 AMP INTERRUPTING CAP.
18. PROVIDE SERVICES OF A FIRE/SMOKE DETECTION AND ALARM COMPANY TO DESIGN AND INSTALL ALARM SYSTEM TO MEET REQUIREMENTS OF THE STATE FIRE MARSHAL.
19. EXTERIOR LIGHTING SHALL BE SHADDED OR INWARDLY DIRECTED IN SUCH A MANNER SO THAT NO DIRECT LIGHTING OR GLARE IS CAST BEYOND THE PROPERTY LINE. THE INTENSITY OF SUCH LIGHTING SHALL NOT EXCEED ONE FOOT CANDLE AS MEASURED AT THE ABUTTING PROPERTY LINE.
20. ALL ELECTRICAL, MECHANICAL AND PLUMBING PENETRATING FIRE PARTITIONS SHALL BE FIRE CALKED. (PENETRATIONS THROUGH RATED CONSTRUCTION SHALL BE SEALED WITH A MATERIAL CAPABLE OF PREVENTING THE PASSAGE OF FLAMES AND HOT GASES WHEN TESTED IN ACCORDANCE WITH ASTM-E814.)



POWER PLAN
SCALE: 3/16" = 1'-0"

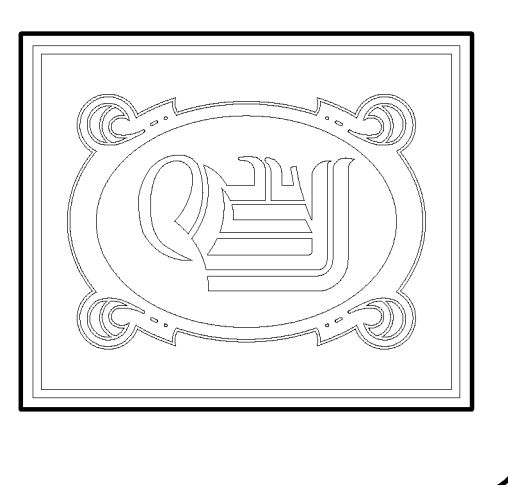
- LEGEND**
- ⊕ - RECEPTACLE 20A 115V
 - ⊕ - GFI RECEPTACLE 20A
 - ⊕ - WEATHER PROOF GFI RECEPTACLE 20A
 - ⊕ - RECEPTACLE 20A AT DECK ABOVE
 - ⊕ - 220V RECEPTACLE
 - ⊕ - DISCONNECT
 - ⊕ - POWER PANEL
 - ⊕ - TELEPHONE/DATA



PANEL PNL-1
LOCATION: RM 103 KITCHEN
FEEDER SOURCE: UTILITY CO.

VOLTAGE: 120/240V, 200A, 1Ø, 3W, W/G
SURFACE MOUNTED WEAPPOINTMENT (GND BAR)

DISC	LOAD DESCRIPTION	AMPS	POLE	LOAD (VA)	LOAD (VA)	BRKAGE	LOCATION	TRIP	DISC
1	AHU #1	40	2	3100	3100	AC COMPRESSION #1		40	2
3	1Ø W/ ELEC HEAT	40	2	5000	3100	5 TON		4	4
5	AHU #2	40	2	3100	3100	AC COMPRESSION #2		40	6
7	1Ø W/ ELEC HEAT	40	2	5000	3100	5 TON		6	6
9	WATER HEATER	30	2	2300	3000	ELEC. W/ W/ W/		40	10
11	RECEPTACLES	20	1	1600	3000	DISCONNECT		40	12
13	RECEPTACLES	20	1	1600	1600	RECEPTACLES		40	14
15	RECEPTACLES	20	1	1600	1600	RECEPTACLES		40	16
17	RECEPTACLES	20	1	1600	1600	RECEPTACLES		40	18
19	RECEPTACLES	20	1	1600	1600	RECEPTACLES		40	20
21	RECEPTACLES	20	1	1600	1600	RECEPTACLES		40	22
23	RECEPTACLES	20	1	1600	1600	RECEPTACLES		40	24
25	RECEPTACLES	20	1	1600	1600	RECEPTACLES		40	26
27	RECEPTACLES	20	1	1600	1600	RECEPTACLES		40	28
29	RECEPTACLES	20	1	1600	1600	RECEPTACLES		40	30
31	RECEPTACLES	20	1	1600	1600	RECEPTACLES		40	32
33	RECEPTACLES	20	1	1600	1600	RECEPTACLES		40	34
35	RECEPTACLES	20	1	1600	1600	RECEPTACLES		40	36
37	RECEPTACLES	20	1	1600	1600	RECEPTACLES		40	38
39	RECEPTACLES	20	1	1600	1600	RECEPTACLES		40	40
41	RECEPTACLES	20	1	1600	1600	RECEPTACLES		40	42
43	RECEPTACLES	20	1	1600	1600	RECEPTACLES		40	44



DAMMON ENGINEERING, INC.
 CHIEF ENGINEER
 ENNETT
 DAMMON, P.E.
 CHIEF ARCHITECT
 ROBERT
 WILTSE

554 OLD SPANISH TRAIL
 SLIDELL, LA, 70458
 OFFICE: 985-649-5632
 FAX: 985-641-5950

WWW.DAMMONENGINEERING.COM
 EMAIL: DAMMONEN@BELL.SOUTH.NET

ARCHITECTURE
 ENGINEERING
 STUDIES
 PLANNING
 INVESTIGATION
 EXPERT WITNESS

NEW
 OFFICE
 WAREHOUSE

BINGO SUPPLY
 9000 SQ.FT.
 OFFICE / WAREHOUSE
 SLIDELL, LA

ELECTRICAL
 POWER PLAN

REV:
 SCALE: AS NOTED
 JOB#: 2113
 DATE: 06-01-11
 SHEET 16