

DAMMON
ENGINEERING, INC.

CHIEF ENGINEER
EMMETT
DAMMON, P.E.

CHIEF ARCHITECT
ROBERT
WILTSE

554 OLD SPANISH TRAIL
SLIDELL, LA. 70458
OFFICE: 985-649-5832
FAX: 985-641-5950

WEBSITE:
WWW.DAMMONENGINEERING.COM
EMAIL:
DAMMONENG@BELLSOUTH.NET

ARCHITECTURE
ENGINEERING
STUDIES
PLANNING
INVESTIGATION
EXPERT WITNESS

NEW
OFFICE
WAREHOUSE

BINGO SUPPLY
9000 SQ. FT.
OFFICE / WAREHOUSE
SLIDELL, LA

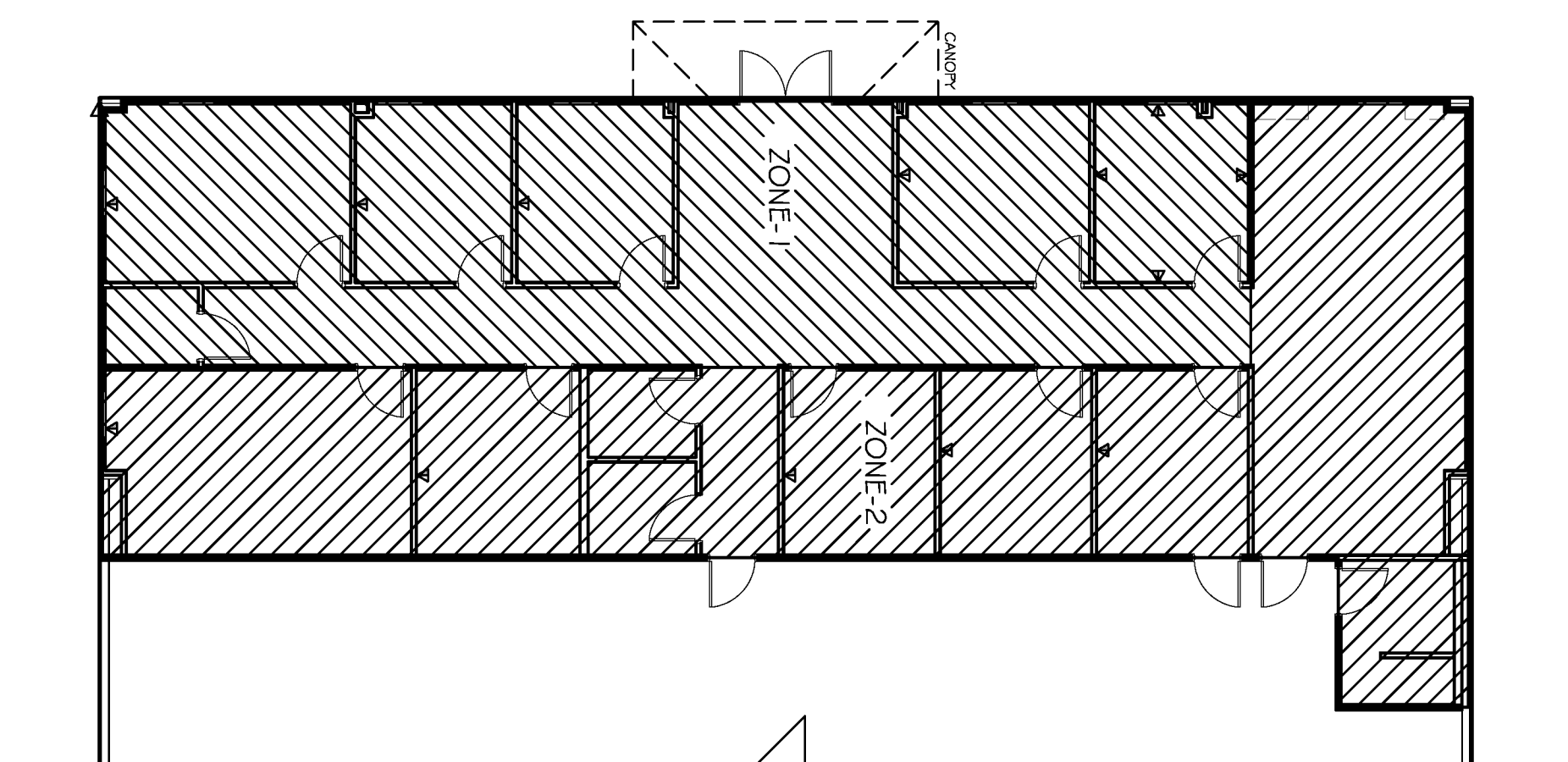
MECHANICAL
PLAN,
NOTES,
& DETAILS

HVAC NOTES

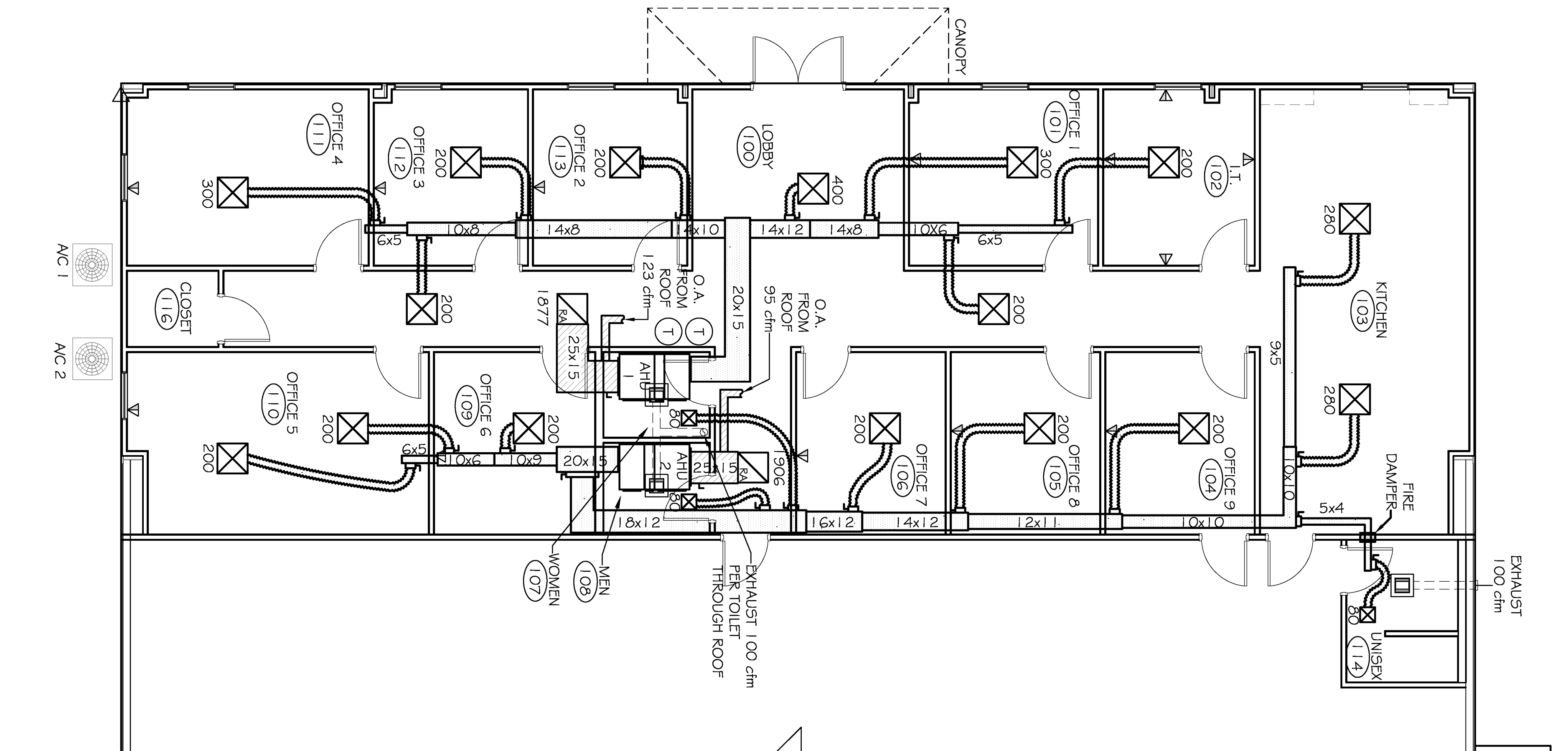
1. CONCEALED DUCTWORK TO BE UL-181, CLASS 1, FIBERGLASS DUCTBOARD. DUCTS SHALL BE SIZED TO LIMIT MAIN DUCTS TO 1000 CFM & SECONDARY DUCTS TO 800 CFM. TO BE INSTALLED PER SMACNA STANDARDS.
2. EXPOSED DUCTWORK TO BE GALVANIZED SHEET METAL PER SMACNA STANDARDS. LINE WITH NEOPRENE COATED 1.0" x 1.5 POUNDS PER CUBIC FOOT DUCT INSULATION.
3. ROUND FLEXIBLE DUCT TO BE UL-181, CLASS 1, AIR DUCT MATERIALS.
4. DUCT SIZES SHOWN ARE CLEAR INSIDE DIMENSIONS.
5. IN ALL SYSTEMS OVER 2000 CFM AND LESS THAN 15,000 CFM, SMOKE DETECTORS SHALL BE INSTALLED IN ACCORDANCE WITH NFPA 72E IN THE RETURN DUCT DOWNSTREAM OF THE AIR HANDLING UNIT AND ALL FILTERS TO AUTOMATICALLY STOP THE FAN.
6. PROVIDE U.L. LISTED 125 "F" FIRESTAT IN RETURN AIR OF EACH SYSTEM UNDER 2000 CFM TO SHUT DOWN THE FAN IN THE EVENT OF FIRE.
7. PROVIDE U.L. RATED FIRE DAMPERS WHERE REQUIRED AT ALL DUCT PENETRATIONS OF FIRE-RATED ASSEMBLIES AND WHERE REQUIRED BY CODE, INCLUDING OUTSIDE AIR INTAKES. CONDENSATE DRAINS TO BE PVC PIPE RUN TO PLUMBERS P-TRAP WITHIN FIVE FEET OF AIR HANDLING UNITS.
8. ALL AIR HANDLING SYSTEMS TO BE BALANCED TO ASSURE PROPER AIR FLOWS PER PLANS.
9. ALL THERMOSTATS TO BE AUTOMATIC CHANGEOVER WITH HEAT SWITCH.
10. EXHAUST FAN EQUAL TO BROAN MODEL NO. 100 CF, OR EQUAL. FAN SHALL BE CONTROLLED BY A SWITCH ON THE WALL IN THE SAME LOCATION AS LIGHT SWITCH(S).
11. PROVIDE BACK DRAFT DAMPER.
12. PROVIDE AND INSTALL WATER PROOF GRILLE VENT IN PROPER ROOF LOCATION FOR PLUMBING FIXTURE EXHAUST.
13. ALL SUPPLY AIR VENTS SHALL BE EQUIPPED WITH AIR CONTROL DAMPERS.
14. LOCATE OUTDOOR UNITS AS SHOWN ON ARCH. DWGS.
15. REFRIGERANT LINES SHALL BE SIZED BY UNIT MANUFACTURER AND INSTALLED ACCORDING TO MANUFACTURERS' INSTRUCTIONS.
16. FRESH AIR SHALL BE SUPPLIED TO EACH AIR HANDLER THROUGH EXTERIOR WALL DUCT SUPPLIED WITH A CONTROL DAMPER.
17. INSTALL FIRE DAMPER WHERE 5 A & R A DUCTS PENETRATE 1 HOUR RATED CEILINGS.
18. ALL ELECTRICAL, MECHANICAL, AND PLUMBING PENETRATING FIRE WALLS SHALL BE FIRE CALKED. (PENETRATIONS THROUGH RATED CONSTRUCTION SHALL BE SEALED WITH A MATERIAL CAPABLE OF PREVENTING THE PASSAGE OF FLAMES AND HOT GASES WHEN TESTED IN ACCORDANCE WITH ASTM-E81-14).
19. ALL MECHANICAL SYMBOLS ARE DRAWN DIAGRAMMATICALLY. CONTRACTOR TO VERIFY WITH OWNER LOCATIONS OF VENTS, DAMPERS, REGISTERS, ETC.
20. REFER TO STRUCTURAL DRAWINGS TO COORDINATE LOCATIONS) & MOUNTING OF MECHANICAL EQUIPMENT.
21. FLEXIBLE DUCTWORK LENGTH NOT TO EXCEED 10'-0".
22. REFER TO REFLECTED CEILING PLAN FOR FINAL GRILLE AND DIFFUSER LOCATIONS AND COORDINATE AS REQUIRED.
23. FINAL LOCATION OF TEMPERATURE CONTROLS TO BE COORDINATED WITH OWNER AT JOB SITE.
24. PROVIDE AND INSTALL SMOKE DETECTORS AS APPROVED BY LOCAL AHJ'S. PLACE NEAR R/A AND S/A OPENINGS OF AHU AND PROVIDE WITH ACCESS PANEL, WIRING BY ELECTRICAL CONTRACTOR.
25. FRESH AIR INTAKES ARE REQUIRED TO HAVE MOTORIZED OR GRAVITY DAMPERS TO SHUT OFF WHEN SYSTEM IS NOT RUNNING. ALL THERMOSTATS MUST BE PROGRAMMABLE. SEE SECTIONS 502.4.4 OR 503.2.4.3 OF THE 2006 INTERNATIONAL ENERGY CODE.

LEGEND

- ☒ - A/C DIFFUSER, LAY IN TYPE 24x24, (12x12 IN TOILET ROOMS)
- ☒ - RETURN AIR CEILING TRANSFER GRILLE
- ☒ - VENT / LIGHT COMBO FIXTURE
- ⊖ - THERMOSTAT

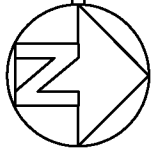


KEY PLAN
N.T.S.



MECHANICAL PLAN

SCALE: 3/16" = 1'-0"



A/C UNIT SCHEDULE

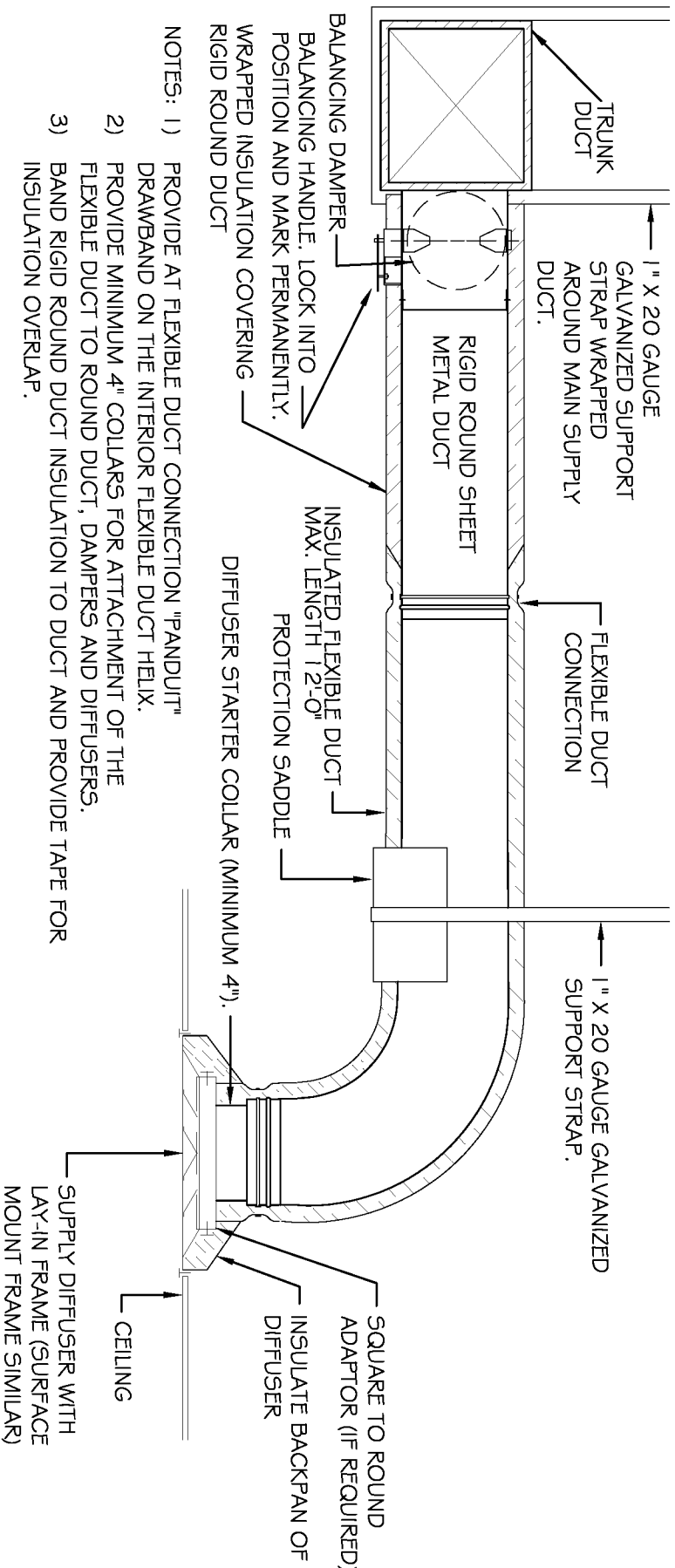
NO.	TOTAL BTU	CFM	O.A.	HEAT ELEC.	VOLTAGE MCA	CRT BRKR	COMMENTS
1	50,000	2,000	123	10 KW	240V, 1Ø	PNL-1-2,3,4	YORK (VERIFY WITH OWNER)
2	50,000	2,000	95	10 KW	240V, 1Ø	PNL-5,6,7,8	

EXHAUST FAN SCHEDULE

LOC	CFM	VOLTAGE	TYPE	MANF.
TOILETS	100	120	VENT/LIGHT	BROAN

FRESH AIR REQUIREMENTS PER AC TABLE 403.3

ROOM NAME	SQUARE FEET	O.A.	ZONE	HEAT (KW)	COMMENTS
ZONE 1: TOTAL SQ. FT. = 1315					
LOBBY 100	174	1	-	-	
OFFICE 101	156	1	-	-	
1.T. 102	125	1	-	-	
CORRIDOR	372	1	-	-	
OFFICE 111	197	1	-	-	
OFFICE 112	128	1	-	-	
OFFICE 113	128	1	-	-	
CLOSET 116	35	1	-	-	
ZONE 2: TOTAL SQ. FT. = 1447					
KITCHEN 103	426	2	-	-	
OFFICE 104	128	2	-	-	
OFFICE 105	128	2	-	-	
OFFICE 106	128	2	-	-	
CORRIDOR	67	2	-	-	
WOMEN 107	45	2	-	-	
MEN 108	48	2	-	-	
OFFICE 109	139	2	-	-	
OFFICE 110	255	2	-	-	
UNISEX 114	83	2	-	-	



DIFFUSER CONNECTION DETAIL-FLEX DUCT
N.T.S.

- NOTES: 1) PROVIDE AT FLEXIBLE DUCT CONNECTION, "PANOUT" DRAWING ON THE INTERIOR FLEXIBLE DUCT HEAD.
2) PROVIDE MINIMUM 4" COLLARS FOR ATTACHMENT OF THE FLEXIBLE DUCT TO ROUND DUCT. DAMPERS AND DIFFUSERS, INSULATION OVERLAP.
3) BAND RIGID ROUND DUCT INSULATION TO DUCT AND PROVIDE TAPE FOR RIGID ROUND DUCT.

REV:
SCALE: AS NOTED
JOB#: 2113
DATE: 06-01-11
SHEET 15