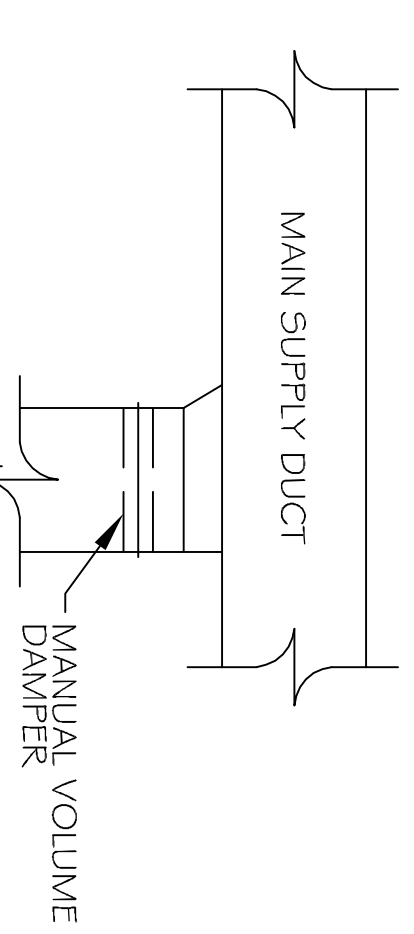


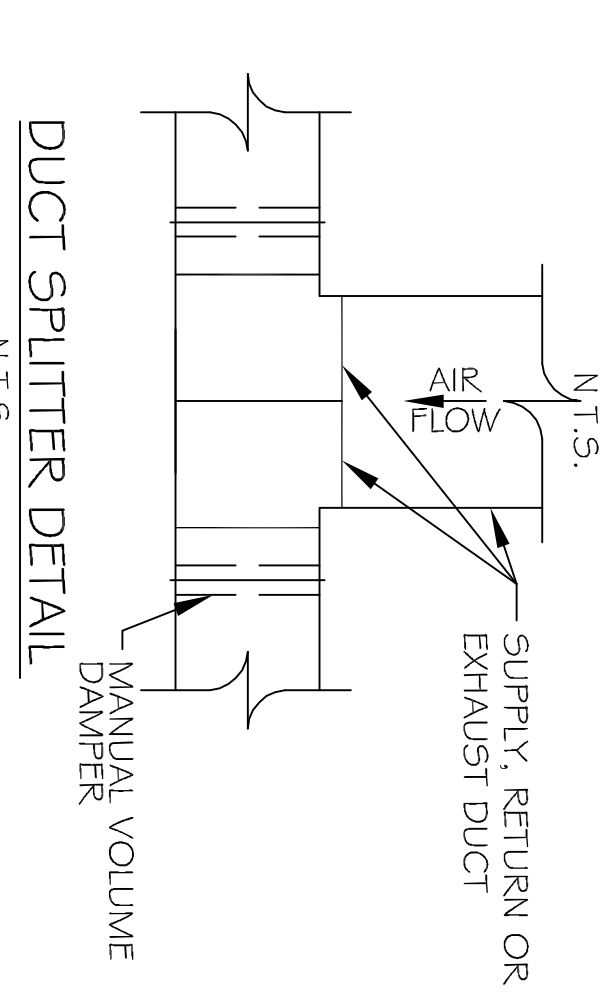
CONDENSING UNIT FEET OR
1" THICK RUBBER
ISOLATION PAD AS
REQUIRED TO RAISE UNIT
OFF SLAB

3 1/2" THICK CONCRETE
HOUSEKEEPING PAD WITH
CHAMFERED EDGES PAD
TO BE MINIMUM 2"
THAN UNIT

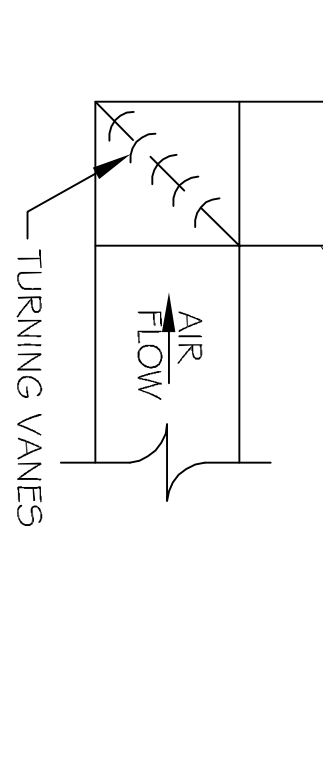
CONDENSING MOUNTING DETAIL
N.T.S.



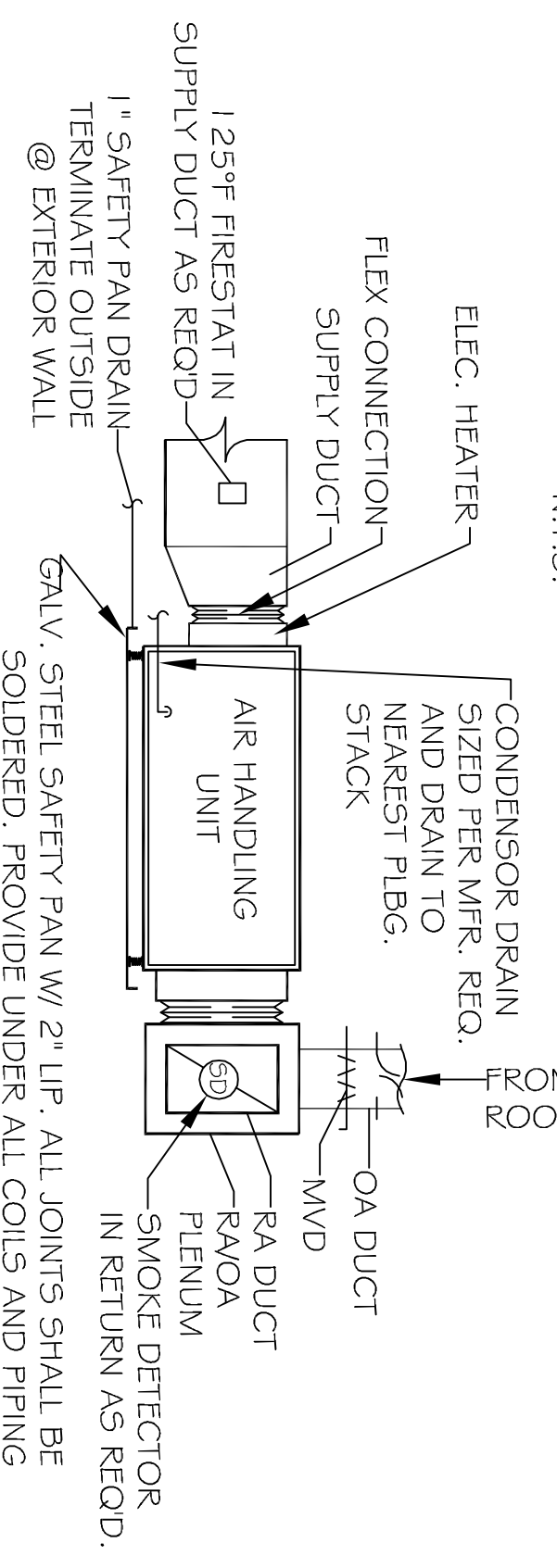
SUPPLY DUCT TAKE-OFF DETAIL
N.T.S.



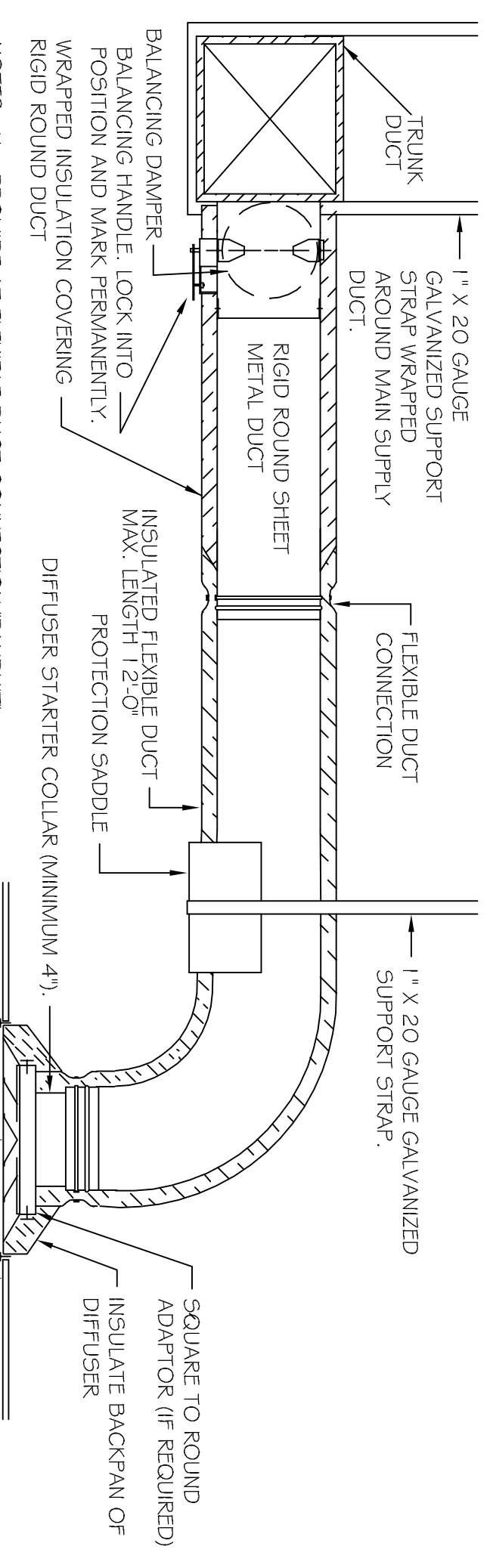
DUCT SPLITTER DETAIL
N.T.S.



SQUARE ELBOW DETAIL
N.T.S.



TYPICAL HORIZONTAL AHU DETAIL
SCALE: N.T.S.



- NOTES: 1) PROVIDE AT FLEXIBLE DUCT CONNECTION "RANDU" DRABRAND ON THE INTERIOR FLEXIBLE DUCT HELIX.
2) PROVIDE MINIMUM 4" COLLARS FOR ATTACHMENT OF THE FLEXIBLE DUCT TO ROUND DUCT, DAMPERS AND DIFFUSERS.
3) BAND RIGID ROUND DUCT INSULATION TO DUCT AND PROVIDE TAPE FOR INSULATION OVERLAP.

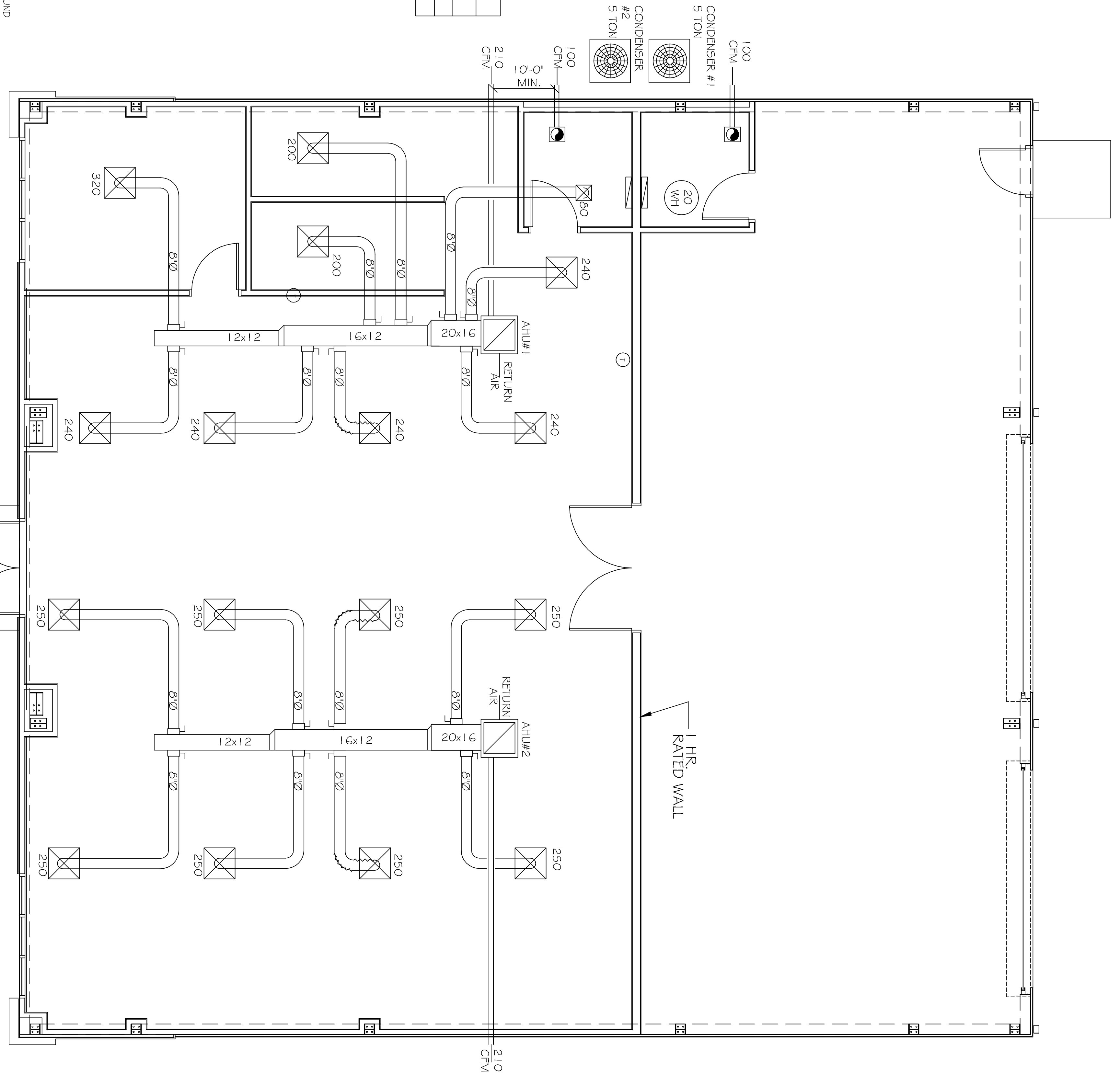
HVAC NOTES

1. CONCEALED DUCTWORK TO BE UL-181, CLASS 1, FIRE-RATED DUCTBOARD. DUCTS SHALL BE SIZED TO LIMIT MAIN DUCTS TO 1,000 CFM & SECONDARY DUCTS TO 800 CFM. TO BE INSTALLED PER SMACNA STANDARDS.
2. EXPOSED DUCTWORK TO BE GALVANIZED SHEET METAL PER SMACNA STANDARDS. LINE ROOF PENETRATIONS SHALL BE UL-181 DUCT PER CODE FOOT DUCT INSULATION.
3. RIGID ROUND DUCT SHALL BE UL-181 DUCT PER CODE FOOT DUCT INSULATION.
4. DUCT SIZES SHOWN ARE CLEAR INSIDE DIMENSIONS.
5. IN ALL SYSTEMS OVER 2000 CFM AND LESS THAN 15,000 CFM, SMOKE DETECTORS SHALL BE INSTALLED IN ACCORDANCE WITH NFPA 72E IN THE RETURN DUCT DOWNSTREAM OF THE AIR HANDLING UNIT AND ALL FILTERS TO AUTOMATICALLY STOP THE FAN.
6. PROVIDE UL LISTED 125 FPM STATIC IN RETURN AIR OF EACH SYSTEM UNDER 2000 CFM. PROVIDE UL LISTED 250 FPM STATIC IN RETURN AIR OF EACH SYSTEM OVER 2000 CFM.
7. PROVIDE UL LISTED FIRE RATED FIRE DAMPERS WHERE REQUIRED BY CODE, INCLUDING OUTSIDE AIR INTAKES, CONDENSATE DRAINS TO BE PVC PIPE RUN TO PLUMBERS P-TRAP WITHIN FIVE FEET OF AIR HANDLING UNITS.
8. ALL AIR HANDLING SYSTEMS TO BE BALANCED TO ASSURE PROPER AIR FLOWS PER PLANS.
9. PROVIDE UL LISTED 125 FPM STATIC IN RETURN AIR OF EACH SYSTEM UNDER 2000 CFM.
10. PROVIDE UL LISTED 250 FPM STATIC IN RETURN AIR OF EACH SYSTEM OVER 2000 CFM.
11. EXHAUST FAN EQUAL TO ROOM MODEL NO. 100 CF OR EQUAL.
12. CONTROLLED BY A SWITCH ON THE WALL IN THE SAME LOCATION AS LIGHT SWITCHES). PROVIDE BACK DRAFT DAMPER.
13. PROVIDE UL LISTED 125 FPM STATIC IN RETURN AIR OF EACH SYSTEM UNDER 2000 CFM.
14. PROVIDE UL LISTED 250 FPM STATIC IN RETURN AIR OF EACH SYSTEM OVER 2000 CFM.
15. LOCATE OUTDOOR UNITS AS SHOWN ON ARCH. DRAWINGS.
16. REFRIGERANT LINES SHALL BE SIZED BY UNIT MANUFACTURER AND INSTALLED ACCORDING TO MANUFACTURER'S INSTRUCTIONS.
17. FRESH AIR SHALL BE SUPPLIED TO EACH AIR HANDLER THROUGH EXTERIOR WALL DUCT SIZED WITH A CONTROL DAMPER.
18. ALL ELECTRICAL WIRING SHALL BE INSTALLED IN ACCORDANCE WITH THE NATIONAL ELECTRICAL CODE (NEC) AND ALL ELECTRICAL PENETRATIONS THROUGH RATED CONSTRUCTION SHALL BE SEALED WITH A MATERIAL CAPABLE OF PREVENTING THE PASSAGE OF FLAME AND HOT GASES WHEN TESTED IN ACCORDANCE WITH ASTM E-119.
19. ALL MECHANICAL SYMBOLS ARE DRAWN DIGITALLY. CONTRACTOR TO VERIFY ALL MECHANICAL SYMBOLS TO VENTS, DAMPERS, REGISTER, ETC.
20. REFER TO ARCHITECT'S DRAWINGS TO DETERMINE EXACT MOUNTING OF MECHANICAL EQUIPMENT.
21. FLEXIBLE DUCTWORK LENGTH NOT TO EXCEED 110'-0".
22. REFER TO REFLECTED CEILING PLAN FOR FINAL GRILLE AND DIFFUSER LOCATIONS AND COORDINATE AS REQUIRED.
23. FINAL LOCATION OF TEMPERATURE CONTROLS TO BE COORDINATED WITH OWNER AT THE TIME OF THE MECHANICAL CONTRACT.
24. PROVIDE AND INSTALL SMOKE DETECTORS AS APPROVED BY LOCAL AHS. FLAG NEAR RA AND SA OPENINGS OF AHU AND PROVIDE WITH ACCESS PANEL, WIRING BY ELECTRICAL CONTRACTOR.
25. FRESH AIR INTAKES ARE REQUIRED TO HAVE MOTORIZED OR GRAVITY DAMPERS TO SHUT OFF WHEN SYSTEM IS NOT RUNNING. ALL THERMOSTATS MUST BE PROGRAMMABLE. SEE SECTION 502.41.4 OR 509.2.4.5 OF THE 2008 INTERNATIONAL ENERGY CODE.

A/C UNIT SCHEDULE						
NO.	TOTAL CFM	O.A.	HEAT ELEC.	ELECTRICAL VOLTAGE	EXC. BRK.	COMMENTS
1	60,000	2,000	115 KW	240V, 1Ø	PHL	
2	60,000	2,000	115 KW	240V, 1Ø	PHL	

EXHAUST FAN SCHEDULE				
FAN NO.	CFM	VOLTAGE	TYPE	MAINT.
EF-1	100	120	VENTILIGHT	

- LEGEND
- 24x24 CEILING DIFFUSER
 - 12x12 DIFFUSERS IN TOLLER ROOMS
 - VENTILIGHT COMBINATION
 - THERMOSTAT
 - A/C UNIT



FLOOR PLAN
SCALE: 1/4" = 1'

RAY HORVATH
FLOORWORKS AND BLINDS
RETAIL
13650 SHORTCUT ROAD
SLIDELL, LA 70455

JOB No: 2152 DATE: 11-13-12
DRAWN BY: BSN/JTL CHECKED BY:



DAMMON
ENGINEERING, INC.
Architects & Engineers

CHIEF ENGINEER, EMMETT DAMMON, P.E.
CHIEF ARCHITECT, ROBERT WILTSE
554 OLD SPANISH TRAIL
SLIDELL, LA 70456

dammone@meenna.com
dammoneg@bellsouth.net
PHONE: 985-649-5832
FAX: 985-641-5950

MECHANICAL
PLAN

SHEET No: 8 OF 10

M-1