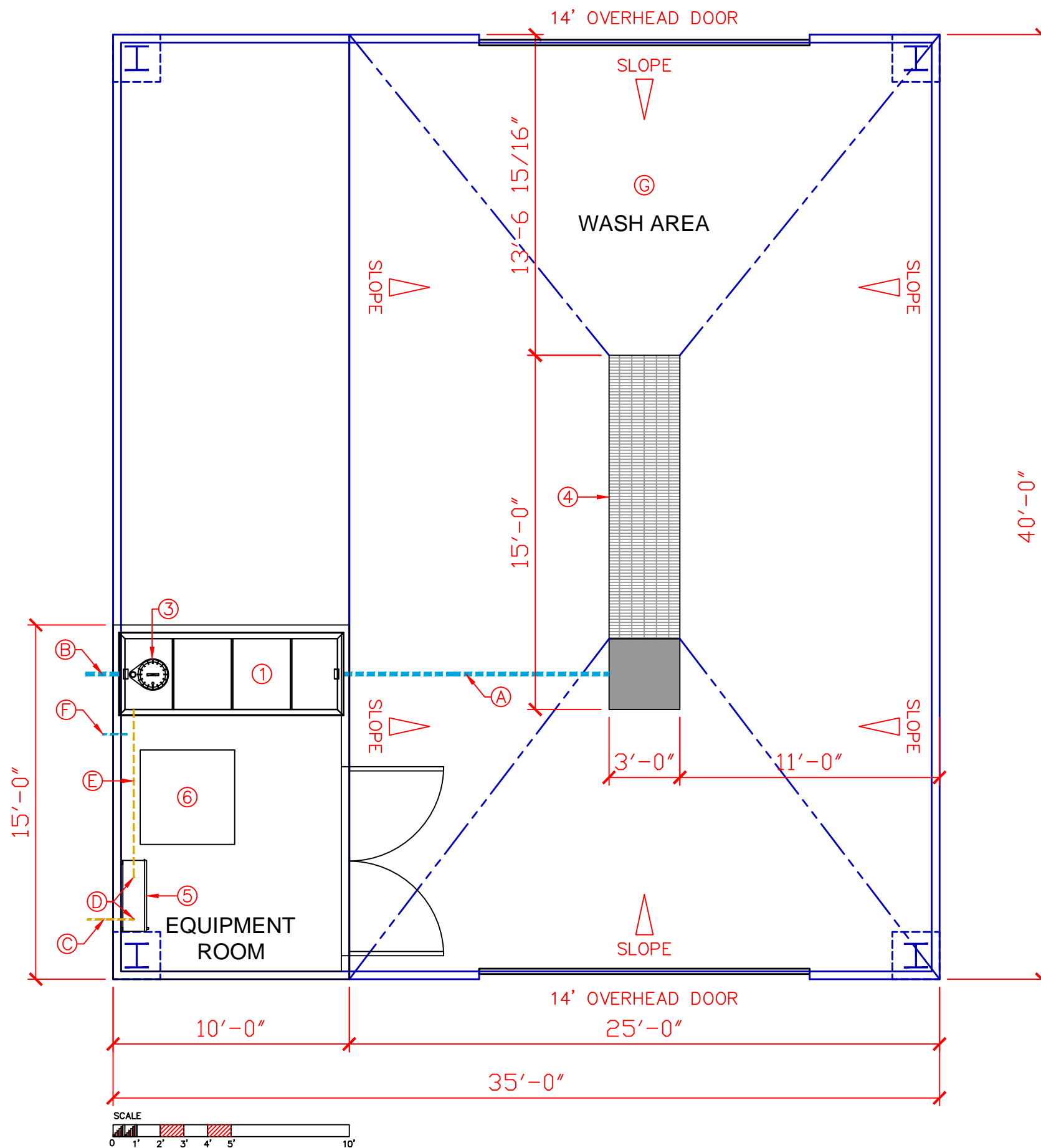


DATE	BY	REVISION
12/13/13	RS	REV-1
12/18/13	RS	REV-2
12/19/13	JS	REV-3



ESD EQUIPMENT

- ① ESD 4 STAGE IN GROUND SUMP PIT [512]
- ② ESD 4.5" PIPE BOLLARDS (03 PLACES) [620]
- ③ ESD SUMP PUMP [WSOB113F]
- ④ CENTER TRENCH 15'L X 3'W X 3'D
3' X 3' GRATE W/ REST SOLID PLATE
- ⑤ CONTROL PANEL (150 AMPS)

BY OTHERS

- ⑥ PRESSURE WASHER

PROCESS PIPE

- Ⓐ GRAVITY PIPE, 2" SCH 40 PVC
- Ⓑ FORCED LINE TO EXISTING DISCHARGE, 2" SCH 40 PVC

ELECTRIC

- Ⓒ SYSTEM POWER, 240V/150A, SINGLE PHASE
W/ NEUTRAL WIRE, 1" CONDUIT
- Ⓓ STUB-UP, 1" ELEC. CONDUIT
- Ⓔ 1" ELEC. CONDUIT FR "D" TO "3"

PLUMBING

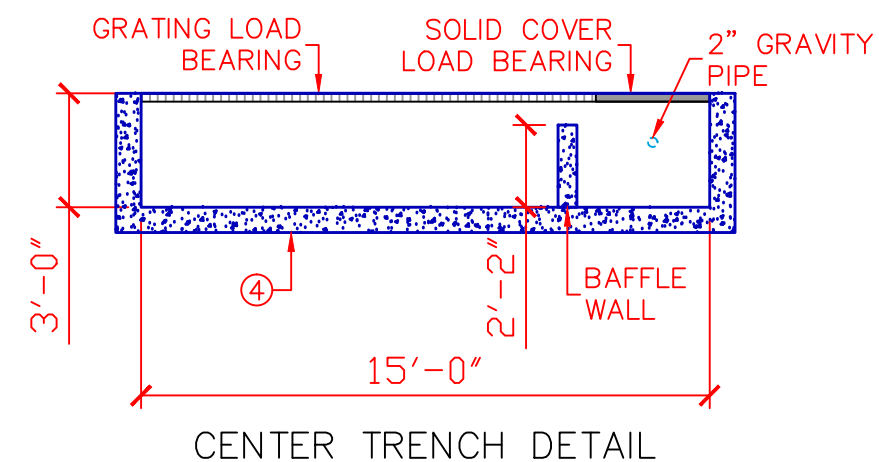
- Ⓕ 3/4" FRESH WATER LINE W/ SPIGGOT

CONCRETE

- Ⓖ 6" CONCRETE 3,000 PSI #4 REBAR 12" O.C.

NOTE:

ALL ELECTRIC CONDUIT AND PLUMBING PIPE ABOVE GROUND IS NOT SHOWN.



Waste2Water, Inc.

495 Oak Road
Ocala, FL 34472

PREPARED FOR:

VOLVO
BLOOMINGTON, IL

PROJECT NAME:

WASH WATER
SYSTEM

TITLE:

PLAN

DRAWN BY:

SF

ENGINEERING:

JS

MFG:

QC:

DATE: 07/29/13

DWG NO: JS062513-02

SCALE: NTS

SHEET: 01 OF 01