

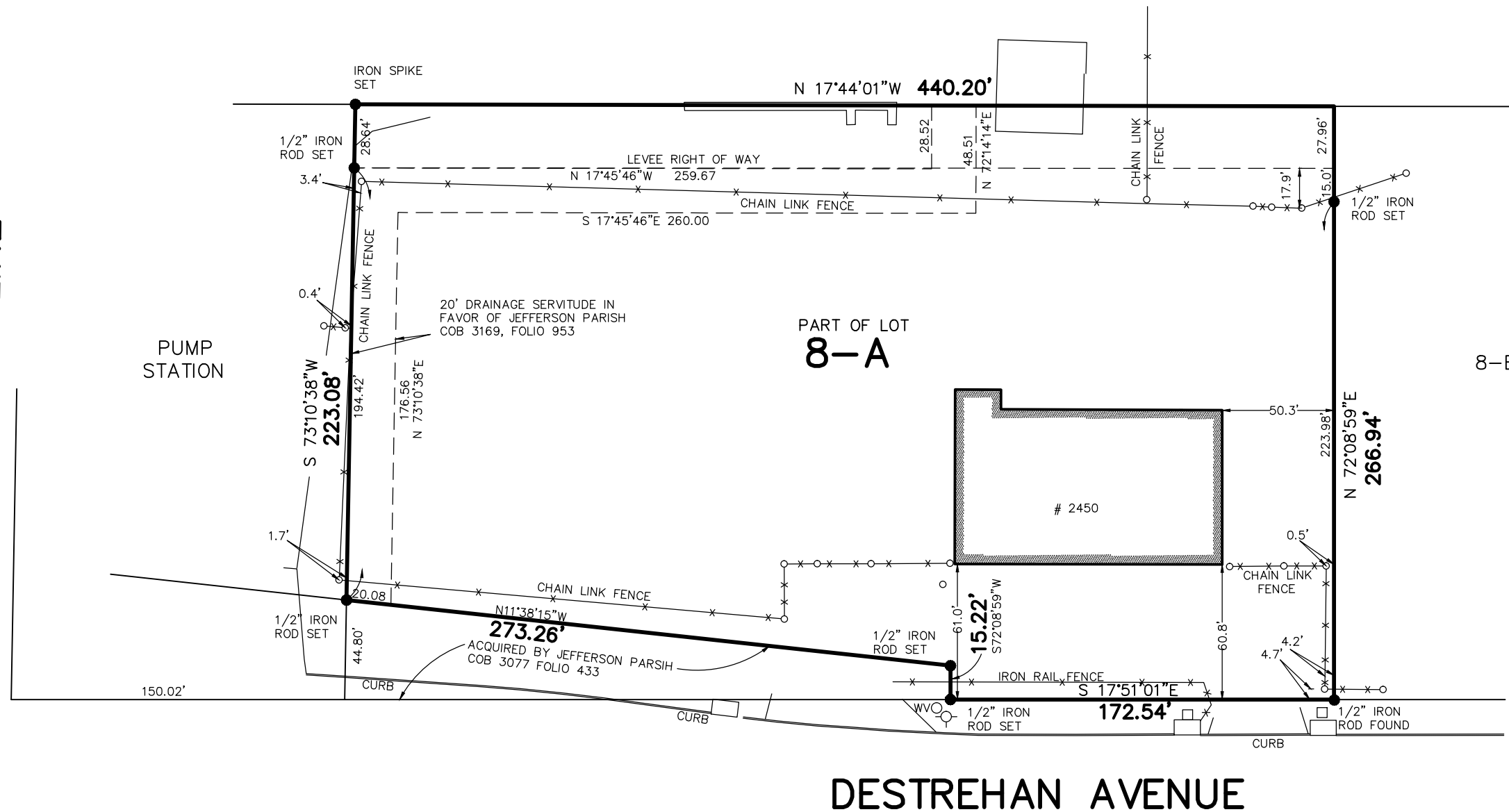
LOT 8-A
DESTREHAN DIVISION
JEFFERSON PARISH, LA.

FIRST AVENUE CANAL



EIGHTY ARPENT LINE

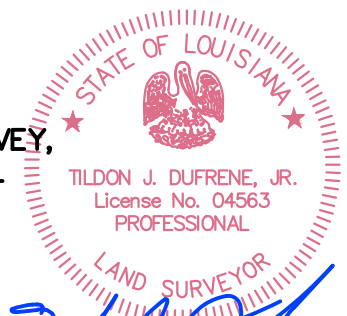
PATRIOT STREET (SIDE)



DESTREHAN AVENUE

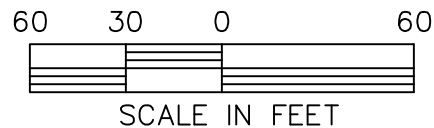
MAY 16, 2016

SURVEYED IN ACCORDANCE WITH THE
LOUISIANA STANDARDS OF PRACTICE FOR
BOUNDARY SURVEYS FOR A CLASS B SURVEY,
MADE AT THE REQUEST OF HARVEY CANAL
LIMITED PARTNERSHIP.



Tildon J. Dufrene, Jr.
T-5288-S2

WVO WATER VALVE
○-○ FIRE HYDRANT



REFERENCE: SURVEY FOR DRAINAGE SERVITUDE BY
DUFRENE SURVEYING & ENGINEERING INC DATED
NOVEMBER 11, 2004
DESTREHAN AVE R/W PLAN BY DUFRENE
SURVEYING & ENGINEERING INC.

BEARINGS ARE BASED ON THE LOUISIANA
COORDINATE SYSTEM OF 1983, SOUTH ZONE.
BASED ON GPS OBSERVATIONS.

THE SERVITUDES AND RESTRICTIONS SHOWN ON THIS SURVEY
ARE LIMITED TO THOSE SET FORTH IN THE DESCRIPTION
FURNISHED US AND THERE IS NO REPRESENTATION THAT ALL
APPLICABLE SERVITUDES AND RESTRICTIONS ARE SHOWN HEREON.
THE SURVEYOR HAS MADE NO TITLE SEARCH OR PUBLIC RECORD
SEARCH IN COMPILING THE DATA FOR THIS SURVEY.

**DUFRENE SURVEYING
& ENGINEERING INC.**

1624 MANHATTAN BOULEVARD, HARVEY, LA 70058
504-368-6390 PH.
504-368-6394 FAX
dufrene@dufrenesurveying.com