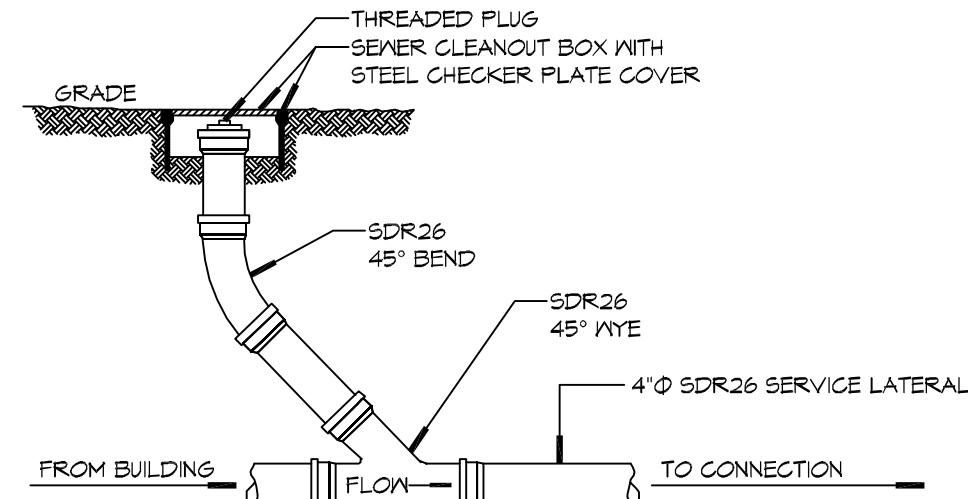
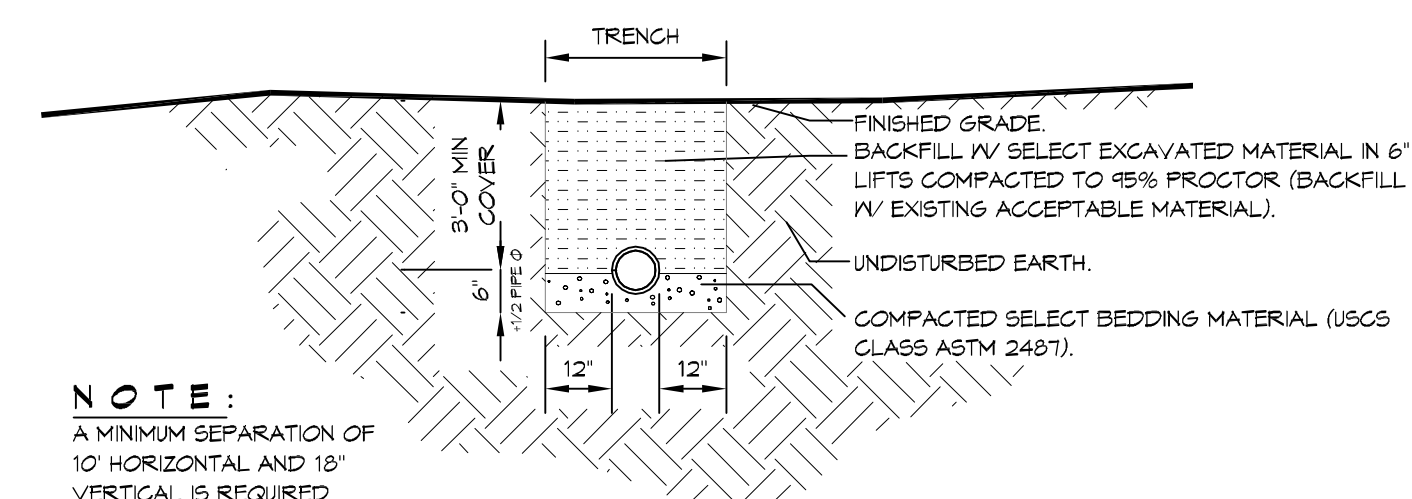


2 DETAIL
SCALE: N.T.S. TYPICAL PIPE BEDDING



3 DETAIL
SCALE: N.T.S. SEWER CLEAN OUT



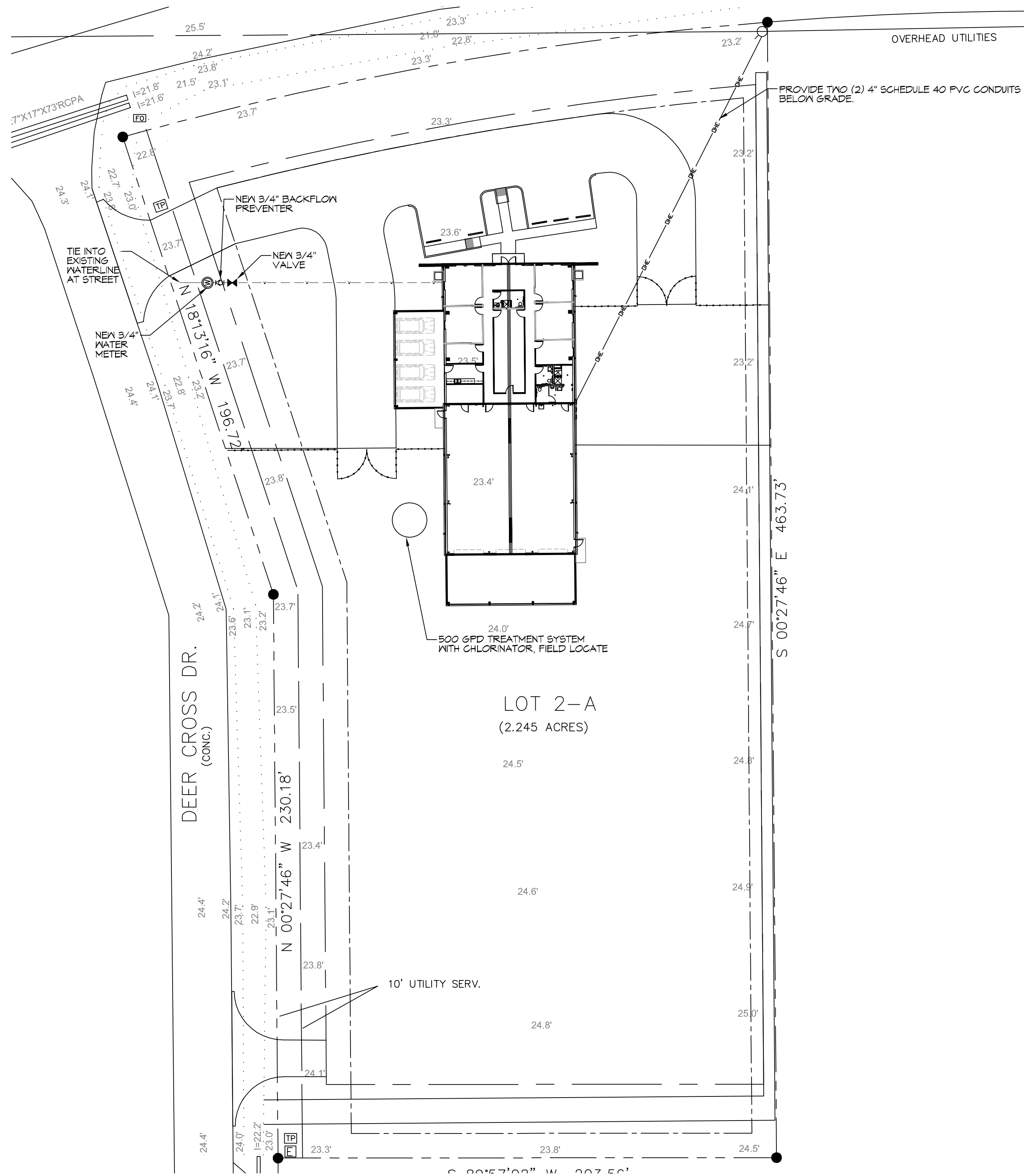
4 DETAIL
SCALE: N.T.S. SEWER AND WATER SEPERATION

GENERAL SITE NOTES

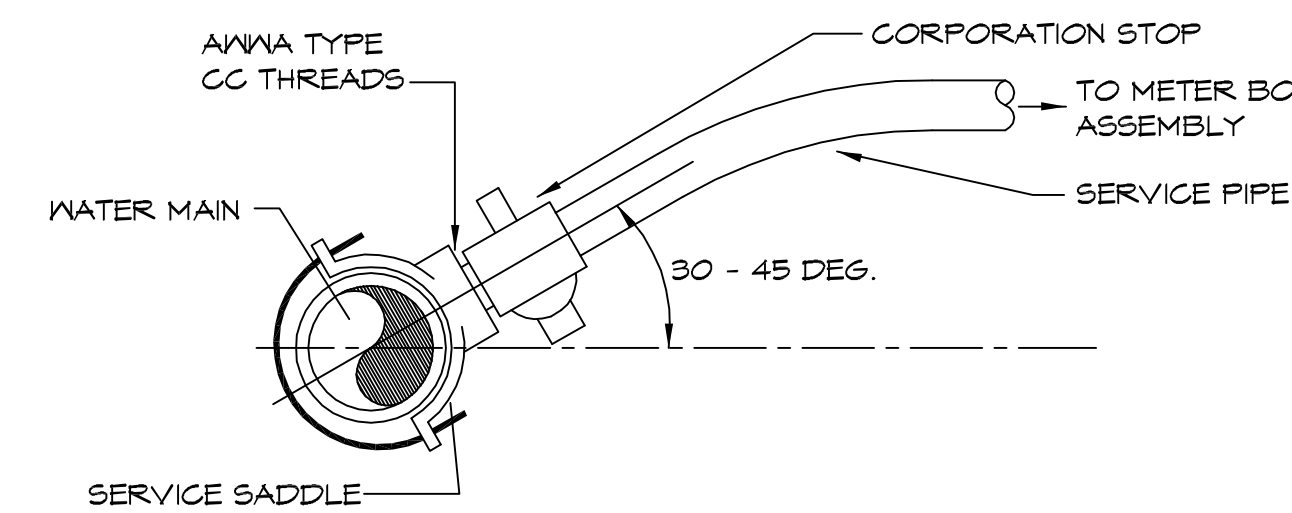
1. PROVIDE ALL LABOR, MATERIAL AND EQUIPMENT FOR A COMPLETE OPERATING SYSTEM. CONTRACTOR IS TO FIELD VERIFY ALL EXISTING UTILITY LOCATIONS, ELEVATIONS, AND INVERTS PRIOR TO COMMENCING ANY WORK. CONTRACTOR SHALL PAY NECESSARY FEES FOR THE UTILITIES CONNECTIONS.
2. CONTRACTOR TO BE RESPONSIBLE TO VERIFY ANY INVERTS AND SET NEW INVERTS OF SEWAGE AND DRAINAGE PIPES.
3. ALL WORK AND MATERIAL TO COMPLY STRICTLY TO THE LATEST LOCAL CITY PARISH, STATE, AND NATIONAL GOVERNING CODES.
4. SEWAGE LINES 3" AND SMALLER SHALL BE SLOPED 1/4" PER FOOT AND LINES THAT ARE 4" AND LARGER SHALL BE SLOPED 1/8" PER FOOT.
10. CONTRACTOR SHALL CONTACT LOUISIANA ONE CALL PRIOR TO COMMENCEMENT OF SITE EXCAVATION.

SITE UTILITIES LEGEND

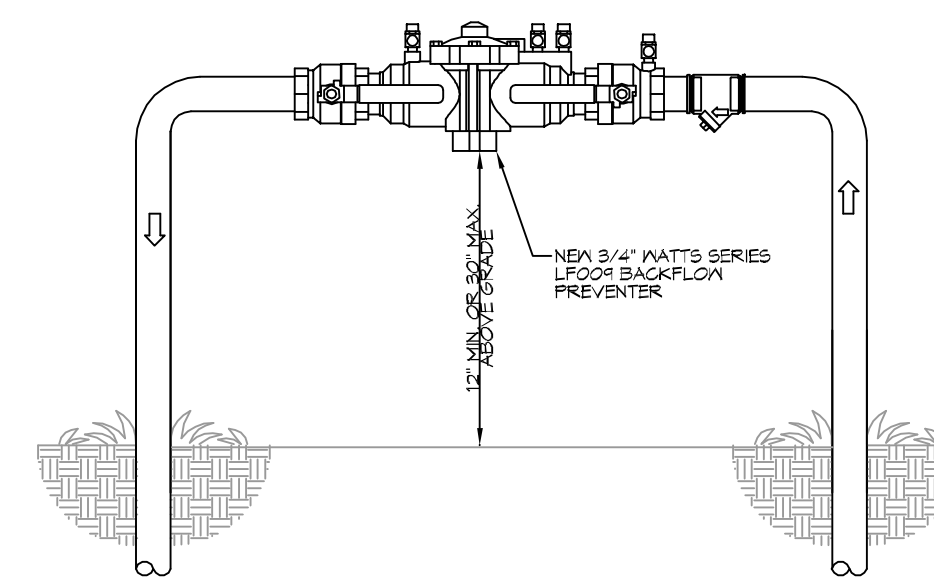
- - - - - NEW WATER LINE
- - - - - NEW ELECTRICAL LINE



1 SITE UTILITY PLAN
SCALE: 1" = 30'-0"



5 WATER SERVICE CONNECTION
SCALE: N.T.S. TYPICAL



6 TYPICAL RISER DETAIL
SCALE: N.T.S. TYPICAL

DAMMON ENGINEERING, INC.
LOUISIANA & MISSISSIPPI
www.dammonengineering.com
506 Old Spanish Trail
Bossier City, LA 70604
Phone: 985.497.1828

#	DESCRIPTION	REVISIONS	DATE

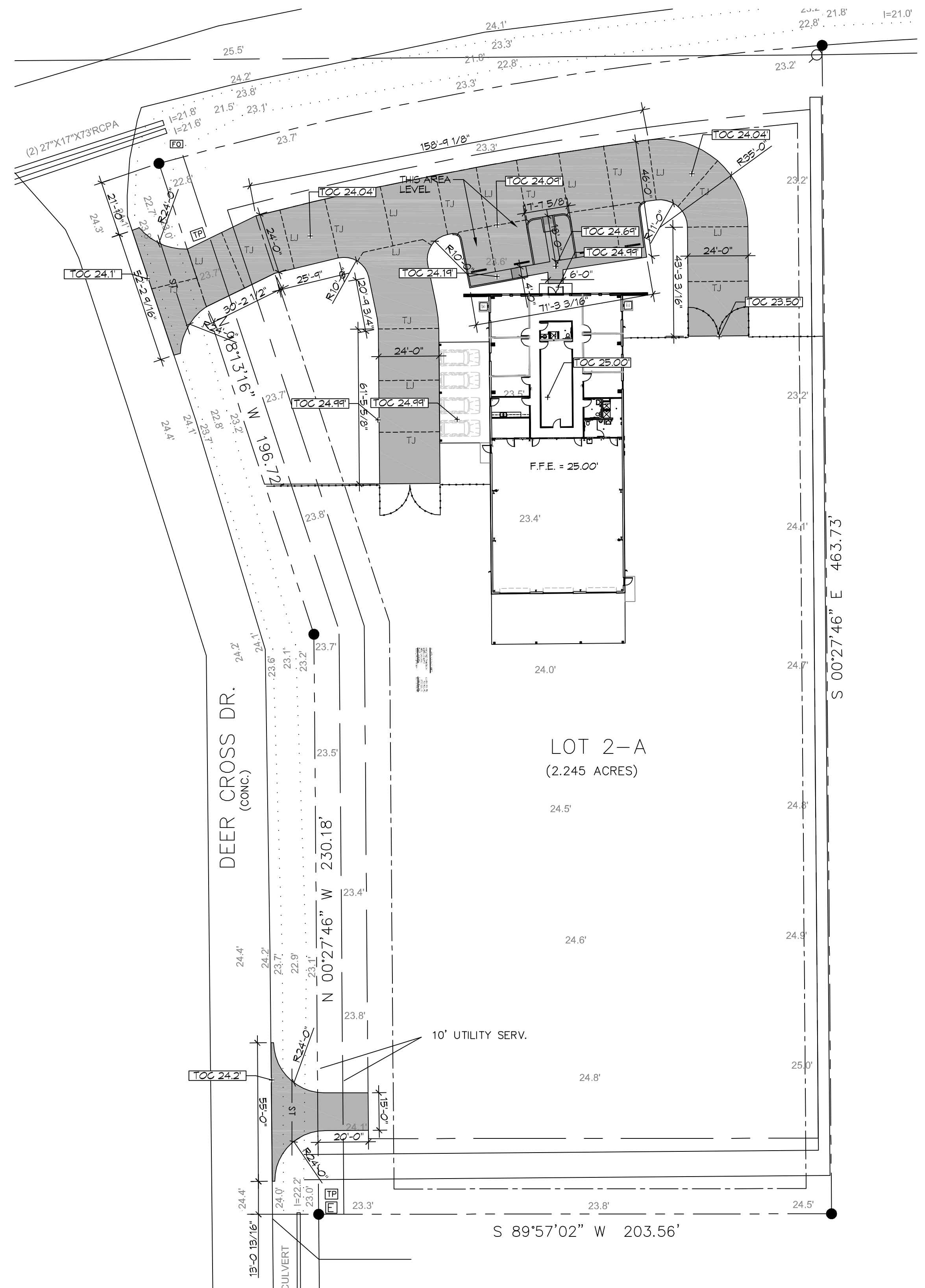


NEW OFFICE WAREHOUSE
ZEIGLER TREE & TIMBER, CO.
L.A. HWY 1025 DEER CROSS DRIVE
MADISONVILLE, LA 70447
JOB No: 2383 DATE: T-25-2019
DRAWN BY: CSD CHECKED BY: BAK

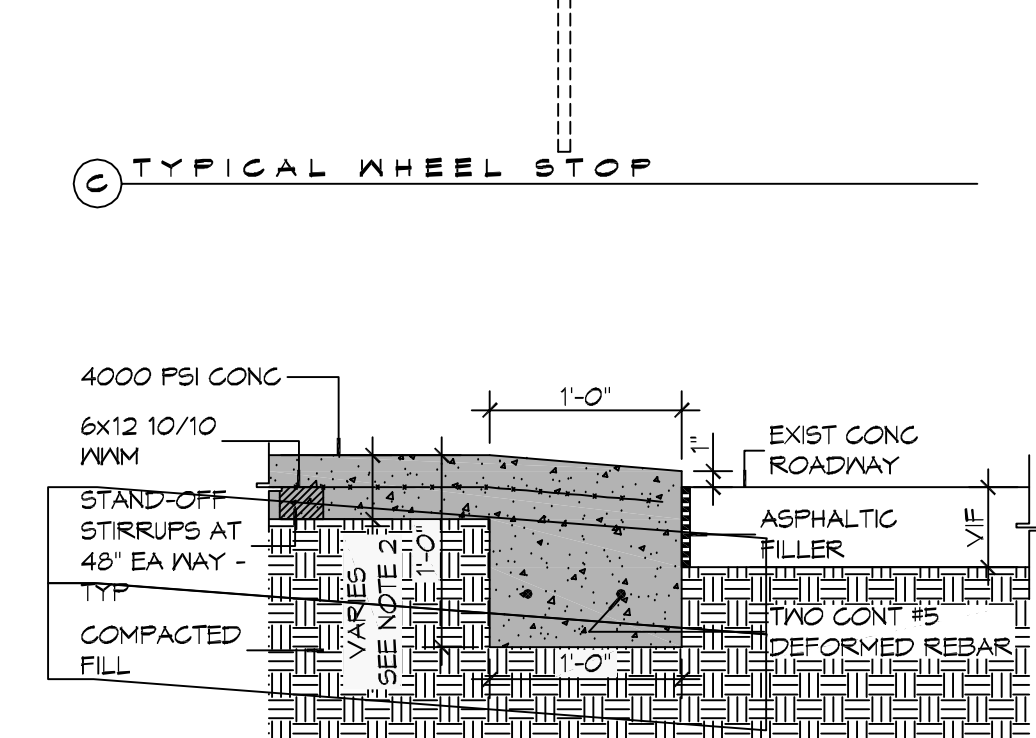
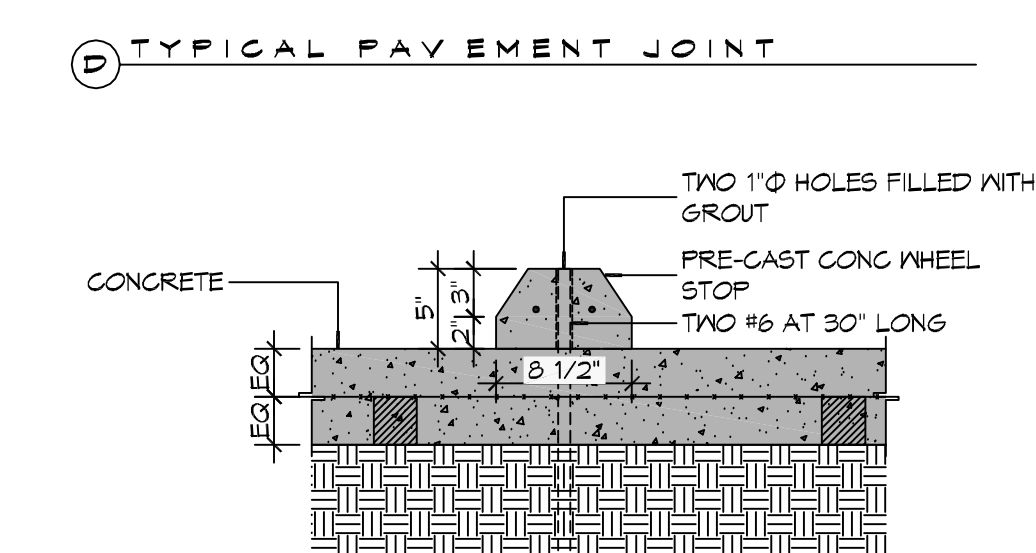
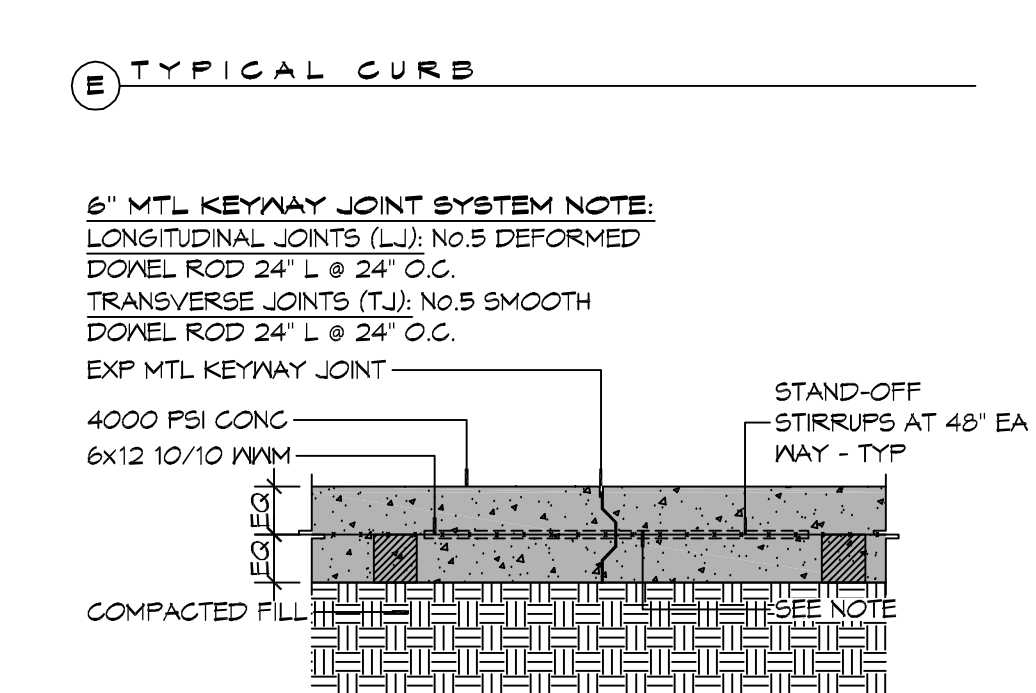
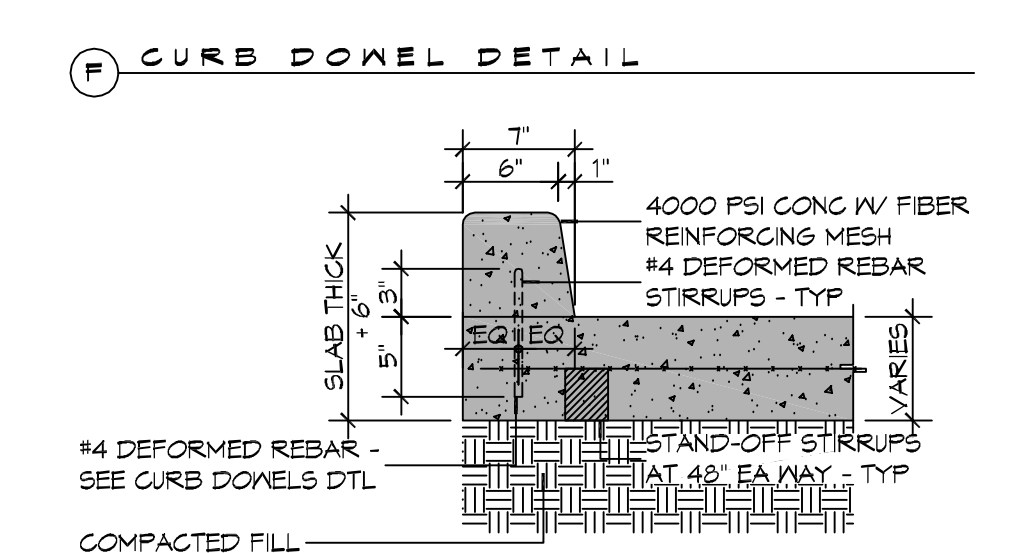
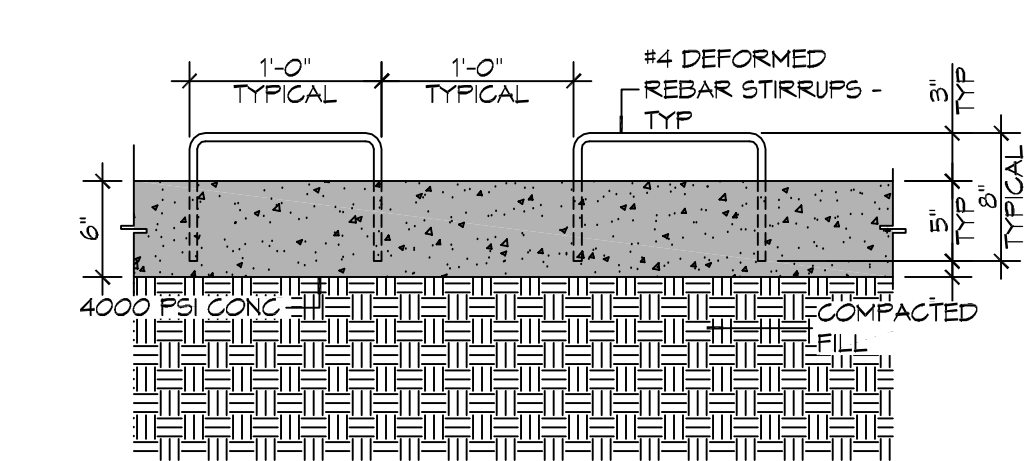
SHEET TITLE:
SITE UTILITY PLAN

DRAWING NUMBER:

C100



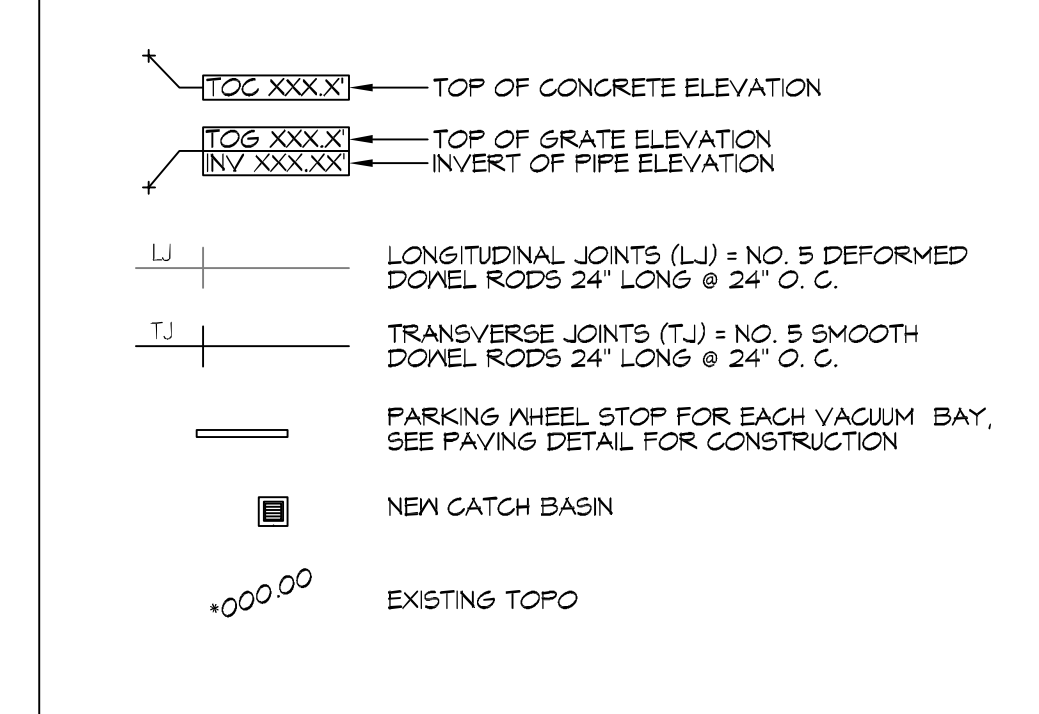
7 SITE PAVING PLAN
SCALE: 1" = 10'-0"



GENERAL PAVING NOTES

- ALL NEW CONCRETE SHALL HAVE A MINIMUM COMPRESSIVE STRENGTH OF 4,000 PSI AT 28 DAYS AND A MINIMUM THICKNESS OF 6". CONCRETE MIX SHALL BE IN ACCORDANCE WITH THE LATEST REVISION OF ASTM C-150 TYPE 1.
- CONCRETE PAVING THICKNESS SHALL VARY AS FOLLOWS:
 - DRIVE LANES & PARKING AREAS = 8" THICKNESS (INDICATED WITH CROSS HATCH WHERE OCCURS)
 - APRONS & LOADING AREAS = 6" THICKNESS (STANDARD UNO)
- ALL REINFORCING STEEL SHALL MEET ASTM-A615 (GRADE 60).
- ALL REINFORCING STEEL SHALL BE SECURELY SUPPORTED TO PREVENT BOTH VERTICAL AND HORIZONTAL MOVEMENT DURING CONCRETE PLACEMENT. ALL CONTROL AND EXPANSION JOINTS SHALL BE LOCATED AND INSTALLED AS SHOWN ON THE PAVING PLAN AND IN ACCORDANCE WITH THE MANUFACTURER'S RECOMMENDATIONS.
- ALL SUB GRADE FILL SHALL BE SELECT GRANULAR MATERIAL COMPACTED TO 95% STANDARD PROCTOR DENSITY IN A MAXIMUM OF 6" LIFTS.
- ANY WORK WITHIN THE ROADWAY OR ADJACENT TO THE ROADWAY CAUSING AN INTERFERENCE TO VEHICULAR TRAFFIC MUST CONFORM TO THE REQUIREMENTS SET FORTH BY THE UNIFORM MANUAL OF TRAFFIC CONTROL DEVICES OF THE STATE OF LOUISIANA. THE CONTRACTOR MUST FURNISH ALL NECESSARY TRAFFIC SIGNS AND/OR BARRICADES AND MAINTAIN THEM DURING CONSTRUCTION ACTIVITY.

PAVING LEGEND



DAMMON ENGINEERING, INC.
LOUISIANA & MISSISSIPPI

Chief Engineer: Brian Mestich, PE
556 Old Spanish Trail
Bossier, LA 70608
www.dammonengineering.com
info@dammonengineering.com
PH: 985.697.1828

#	DESCRIPTION	REVISIONS	DATE

SEAL:

NEW OFFICE WAREHOUSE
ZEIGLER TREE & TIMBER, CO.

L.A. HWY 1025 DEER CROSS DRIVE
MADISONVILLE, LA 70447
JOB No: 2383 DATE: 7-25-2019
DRAWN BY: CACD CHECKED BY: BAN

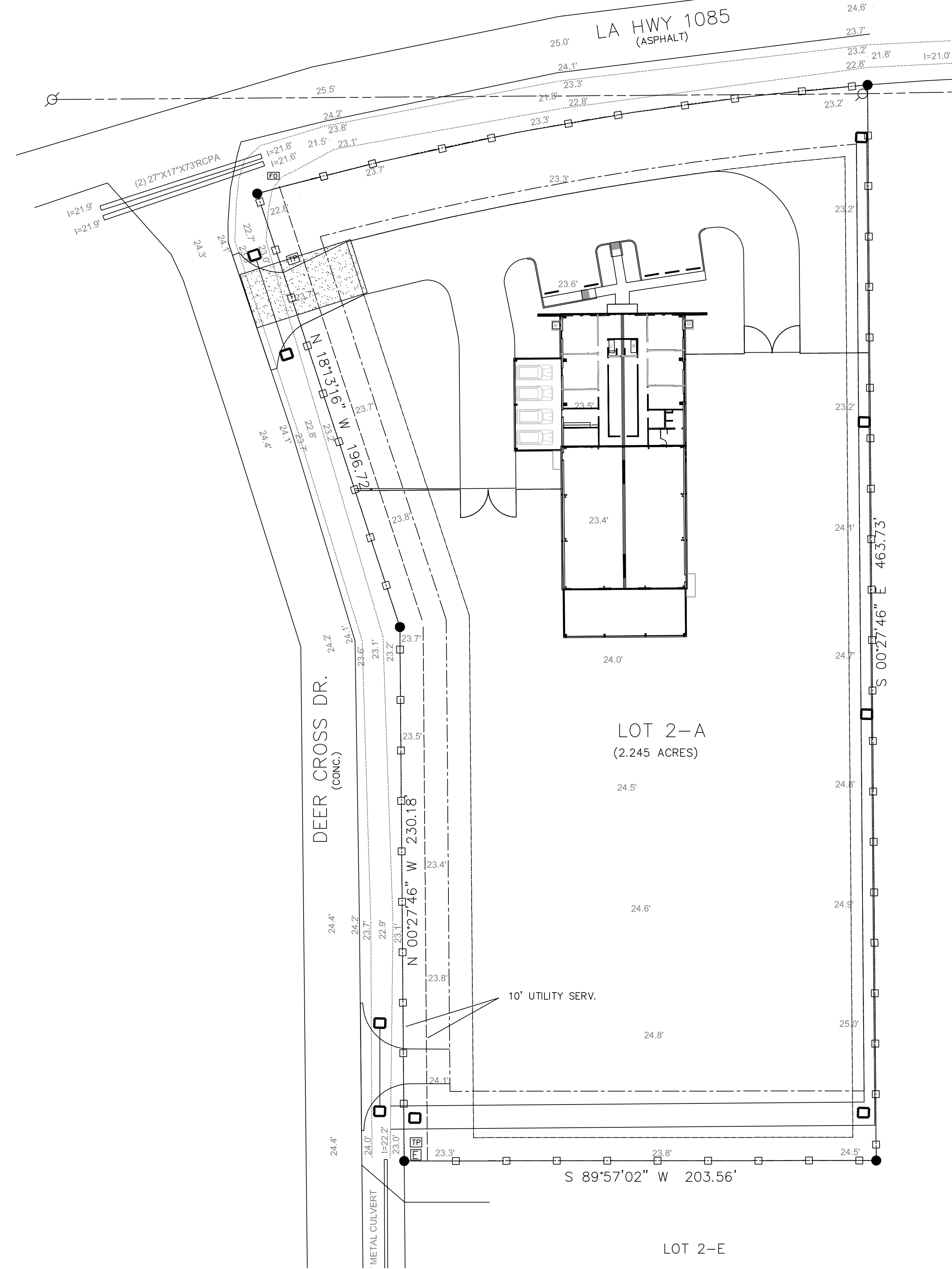
SHEET TITLE:
SITE PAVING PLAN

DRAWING NUMBER:
C101

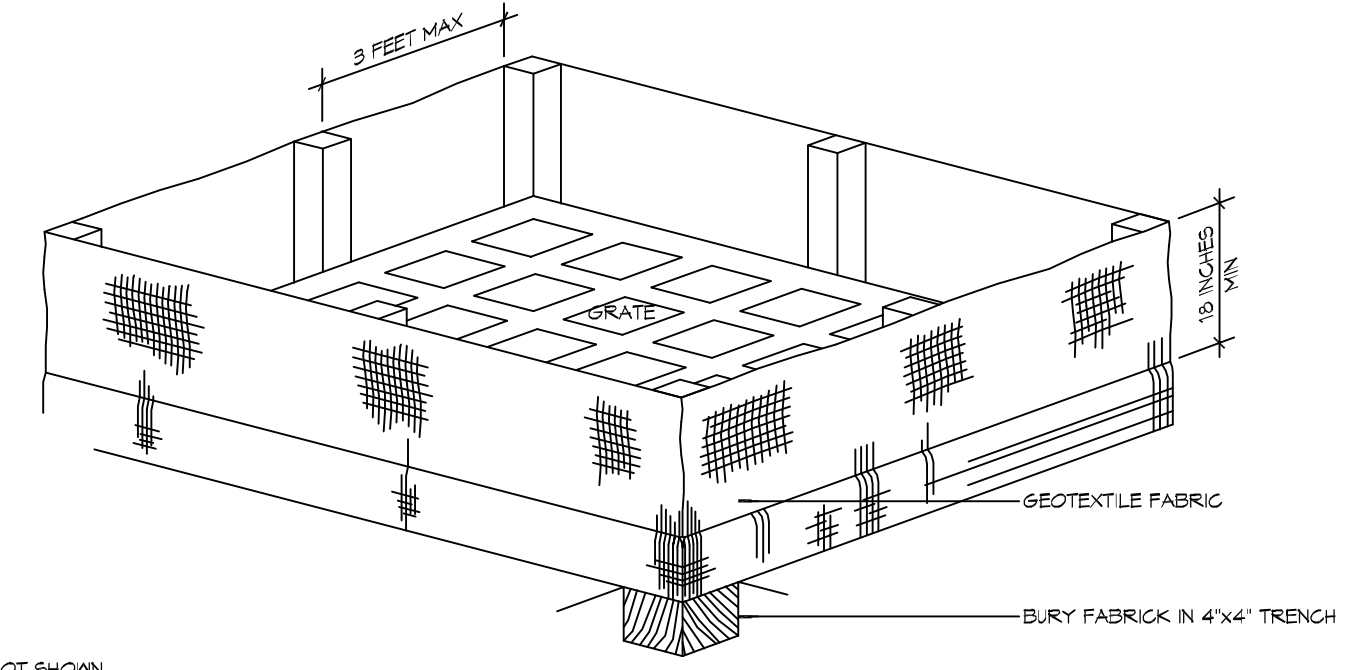
SHEET No: 2 of 8

8 PAVING DETAILS
SCALE: 1" = 1'-0"

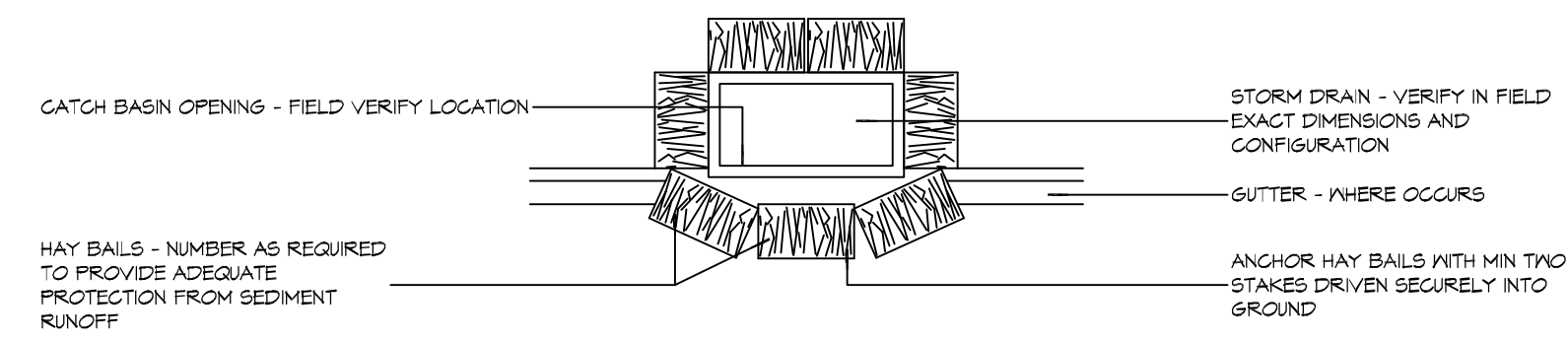
C:\Users\james\OneDrive\Documents\C103 - Erosion Control Plan & Details.dwg PLOT DATE: 08/26/2019 11:21:16 AM



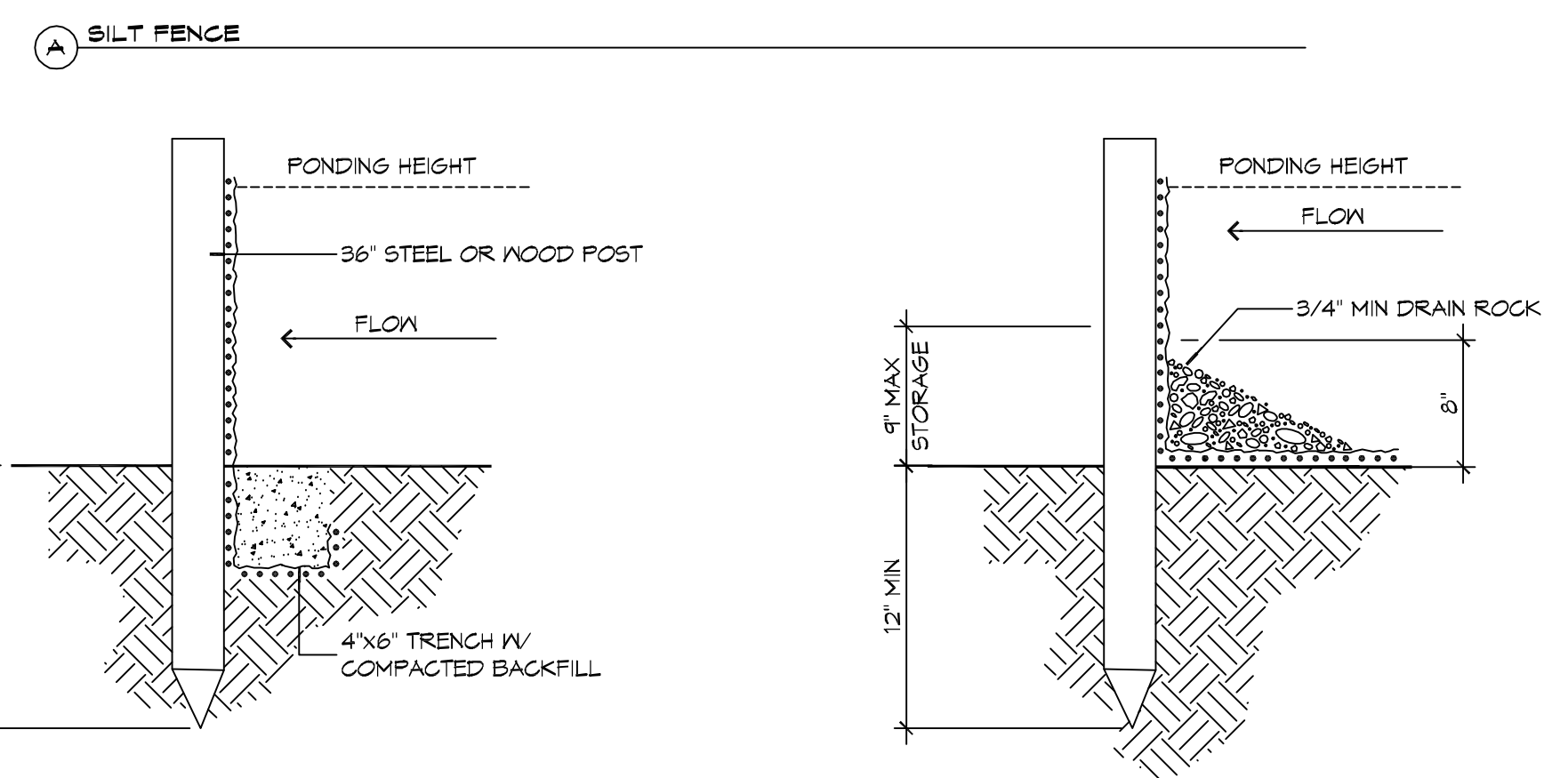
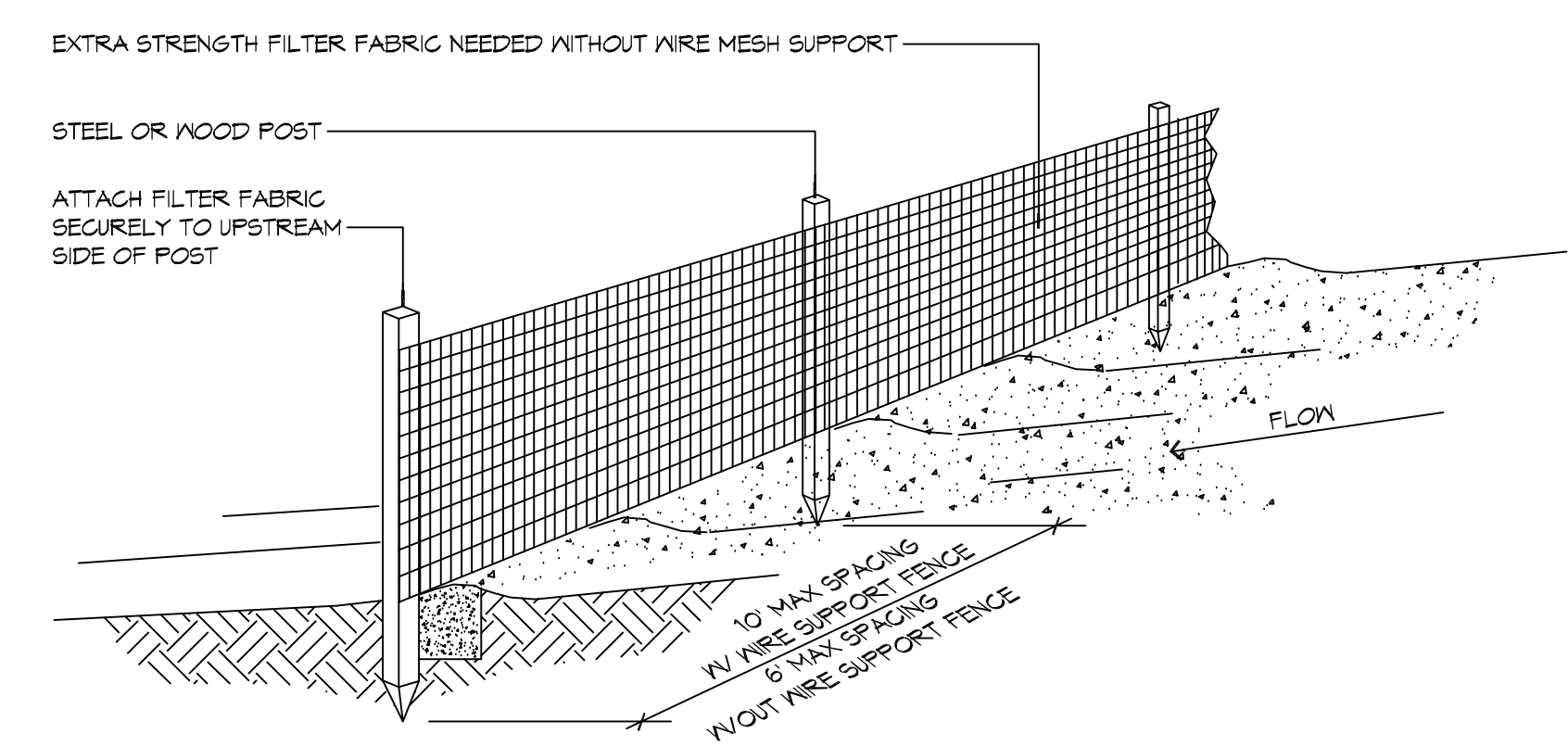
- EROSION CONTROL FENCE NOTES:**
 THE TEMPORARY DROPP INLET TRAP IS TO BE USED IN SMALL DRAINAGE AREAS (LESS THAN 1 ACRE) WHERE THE STORM DRAIN IS FUNCTIONAL BEFORE THE AREA IS STABILIZED. THE TRAP CAN BE EITHER GEOTEXTILE FABRIC OR HAY BALS.
1. THE GEOTEXTILE FABRIC SHALL CONFORM TO SECTION 1014 (TYPE G) OF THE LA DOTD STANDARD SPECIFICATIONS.
 2. WOODEN STAKES SUPPORTING THE FABRIC SHALL BE SPACED AROUND THE INLET AT A MAXIMUM SPACING OF 3 FEET.
 3. THE HEIGHT OF THE FABRIC ABOVE THE INLET SHALL BE LIMITED TO 1'-6" AND THE BOTTOM OF THE FABRIC SHALL BE BURIED IN A TRENCH APPROXIMATELY 4" WIDE BY 4" DEEP. THE FABRIC SHALL BE STAPLED TO POST WITH 1/2" STAPLES.
 4. THE TRAP SHOULD BE INSPECTED REGULARLY AND AFTER EACH STORM. THE SEDIMENT SHOULD BE REMOVED AND MAKE SURE EACH STAKE IS FIRMLY IN THE GROUND.



12 DETAIL
 SCALE: NTS
 EROSION CONTROL FENCE AT GRATE



13 DETAIL
 SCALE: NTS
 CATCH BASIN PROTECTION



14 DETAILS
 SCALE: NTS
 EROSION CONTROL FENCE AT PROPERTY LINE OR LIMITS OF CONSTRUCTION

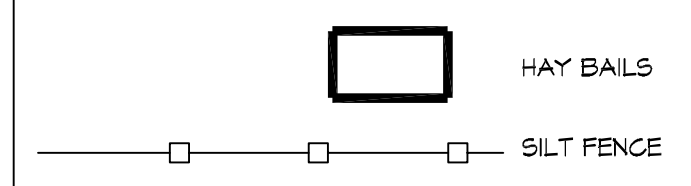
GENERAL EROSION CONTROL NOTES

1. ALL APPLICABLE EROSION AND SEDIMENT CONTROL PRACTICES SHALL BE IN PLACE PRIOR TO ANY GRADING OPERATION AND/OR INSTALLATION OF PROPOSED STRUCTURES OR UTILITIES.
2. SOIL EROSION AND SEDIMENT CONTROL PRACTICES ON THIS PLAN SHALL BE CONSTRUCTED IN ACCORDANCE WITH STANDARDS OF THE AUTHORITY HAVING JURISDICTION.
3. APPLICABLE EROSION AND SEDIMENT CONTROL PRACTICES SHALL BE LEFT IN PLACE UNTIL CONSTRUCTION IS COMPLETED AND/OR THE AREA IS STABILIZED.
4. THE CONTRACTOR SHALL PERFORM ALL WORK, FURNISH ALL MATERIALS, AND INSTALL ALL MEASURES REQUIRED TO REASONABLY CONTROL THE SOIL EROSION RESULTING FROM CONSTRUCTION OPERATIONS AND PREVENT EXCESSIVE FLOW OF SEDIMENT FROM THE CONSTRUCTION SITE.
5. ANY DISTURBED AREA THAT IS TO BE LEFT EXPOSED FOR MORE THAN THIRTY (30) DAYS AND NOT SUBJECT TO CONSTRUCTION TRAFFIC SHALL IMMEDIATELY RECEIVE A TEMPORARY SEEDING AND FERTILIZATION IN ACCORDANCE WITH THE AUTHORITY HAVING JURISDICTION'S STANDARDS.
6. THE SITE SHALL BE AT ALL TIMES BE GRADED AND MAINTAINED SUCH THAT ALL STORMWATER RUNOFF IS DIVERTED TO SOIL EROSION AND SEDIMENT CONTROL FACILITIES.
7. ALL CATCH BASIN INLETS SHALL BE PROTECTED IN ACCORDANCE WITH THESE PLANS.
8. ANY WORK WITHIN THE ROADWAY OR ADJACENT TO THE ROADWAY CAUSING AN INTERFERENCE TO VEHICULAR TRAFFIC MUST CONFORM TO THE REQUIREMENTS SET FORTH BY THE UNIFORM MANUAL OF TRAFFIC CONTROL DEVICES OF THE STATE OF LOUISIANA. THE CONTRACTOR MUST FURNISH ALL NECESSARY TRAFFIC SIGNS AND/OR BARRICADES AND MAINTAIN THEM DURING CONSTRUCTION ACTIVITY.

SILT FENCE INSTALLATION NOTES

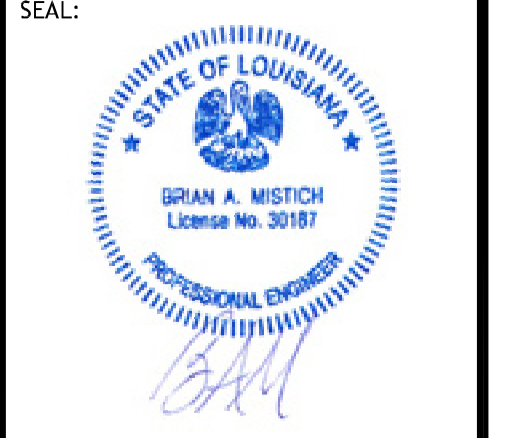
1. THE BASE OF BOTH END POSTS MUST BE AT LEAST 2'-4" ABOVE THE TOP OF THE SILT FENCE FABRIC ON THE MIDDLE POSTS FOR DITCH CHECKS TO DRAIN PROPERLY. USE A HAND LEVEL OR STRING LEVEL, IF NECESSARY, TO MARK BASE POINTS BEFORE INSTALLATION.
2. INSTALL POSTS 3 - 4 FEET APART IN CRITICAL WATER RETENTION AREAS AND 6 - 7 FEET APART ON STANDARD APPLICATIONS.
3. INSTALL POSTS 24" DEEP ON THE DOWNSTREAM SIDE OF THE SILT FENCE, AND AS CLOSE AS POSSIBLE TO THE FABRIC, ENABLING POSTS TO SUPPORT THE FABRIC FROM UPSTREAM WATER PRESSURE.
4. INSTALL POSTS WITH THE NIPPLES FACING AWAY FROM THE SILT FENCE FABRIC.
5. ATTACH THE FABRIC TO EACH POST WITH THREE TIES, ALL SPACED WITHIN THE TOP 8" OF THE FABRIC. ATTACH EACH TIE DIAGONALLY 45° THROUGH THE FABRIC, WITH EACH PUNCTURE AT LEAST 1" VERTICALLY APART. ADDITIONALLY, EACH TIE SHOULD BE POSITIONED TO HANG ON A POST NIPPLE WHEN TIGHTENED TO PREVENT SAGGING.
6. WRAP APPROXIMATELY 6" OF FABRIC AROUND THE END POSTS AND SECURE WITH 3 TIES.
7. NO MORE THAN 24" OF A 36" FABRIC IS ALLOWED ABOVE GROUND LEVEL.
8. THE INSTALLATION SHOULD BE CHECKED AND CORRECTED FOR ANY DEVIATIONS BEFORE COMPACTION. USE A FLAT-BLADED SHOVEL TO TUCK FABRIC DEEPER INTO THE SILT IF NECESSARY.
9. COMPACTION IS VITALLY IMPORTANT FOR EFFECTIVE RESULTS. COMPACT THE SOIL IMMEDIATELY NEXT TO THE SILT FENCE FABRIC WITH THE FRONT WHEEL OF THE TRACTOR, SKID STEER, OR ROLLER EXERTING AT LEAST 60 PSI OF PRESSURE. COMPACT THE UPSTREAM SIDE FIRST, AND THEN EACH SIDE TWICE FOR A TOTAL OF FOUR TRIPS.
10. SILT FENCE SHALL BE PLACED ON SLOPE CONTOURS TO MAXIMIZE PONDING EFFICIENCY.
11. INSPECT AND REPAIR FENCE AFTER EACH STORM EVENT AND REMOVE SEDIMENT WHEN NECESSARY. NINE INCH MAXIMUM RECOMMENDED STORAGE HEIGHT.
12. REMOVED SEDIMENT SHALL BE DEPOSITED TO AN AREA THAT WILL NOT CONTRIBUTE SEDIMENT OFF-SITE AND CAN BE PERMANENTLY STABILIZED.

EROSION CONTROL LEGEND



DAMMON ENGINEERING, INC.
 LOUISIANA & MISSISSIPPI
 Chief Engineer: Brian M. Misch, PE
 554 Old Spanish Trail
 Slidell, LA 70688
 www.dammonengineering.com
 info@dammonengineering.com
 PH: 985.449.5832

#	DESCRIPTION	DATE



NEW OFFICE WAREHOUSE & ZEIGLER TRUCK TIMBER.
 LA. HWY 1085 DEER CROSS DRIVE
 MADISONVILLE, LA 70447
 JOB No: 2893 DATE: T-25-2019
 DRAWN BY: C&D CHECKED BY: BAM

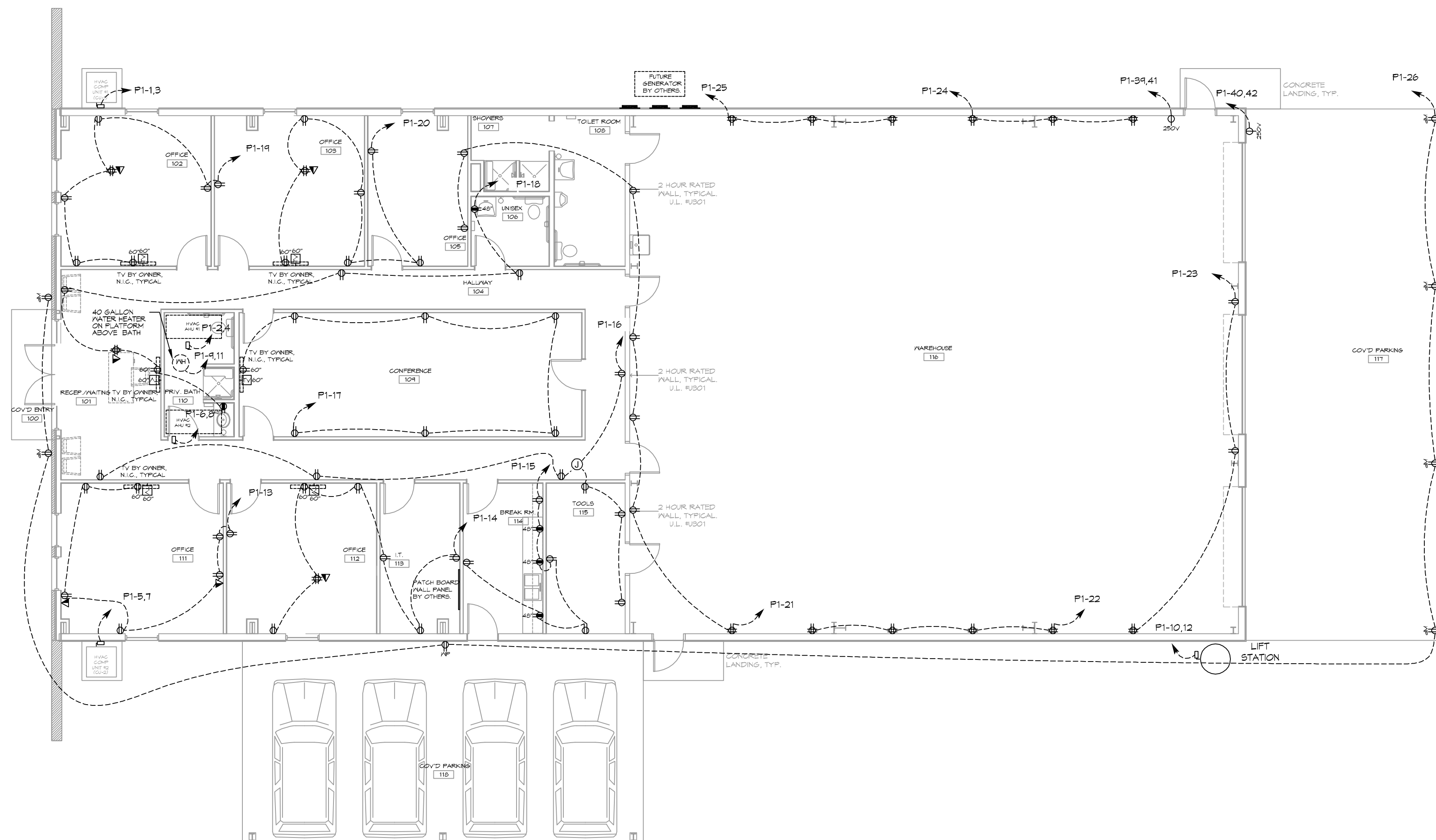
11 EROSION CONTROL PLAN
 SCALE: 1" = 20'-0"

SHEET TITLE:
 EROSION CONTROL AND DETAILS
 DRAWING NUMBER:
C103
 SHEET No: 4 of 8

FILE NAME: J:\A - Office Warehouse\328 - 2494 - Tree Trunk\328.dwg DATE: 11/27/09 11:27:05

GENERAL POWER NOTES

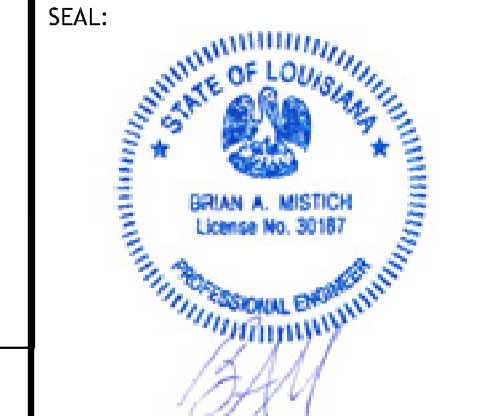
1. ALL WORK SHALL CONFORM TO THE LATEST EDITION OF THE NATIONAL ELECTRICAL CODE, THE GOVERNING ELECTRICAL CODE AND ALL OTHER INSPECTION DEPARTMENTS HAVING JURISDICTION. OBTAIN CERTIFICATES OR APPROVAL WHERE REQUIRED. ELECTRICAL CONTRACTOR SHALL VERIFY ALL WIRE AND CONDUIT SIZES FOR MECHANICAL EQUIPMENT TO BE INSTALLED.
2. ALL MATERIALS FURNISHED SHALL BE NEW AND SHALL BE U.L. LISTED.
3. THE DRAWINGS INDICATE SIZE AND GENERAL LOCATION OF WORK. SCALE DIMENSIONS SHALL NOT BE USED. THE EXACT LOCATION OF ALL LIGHTING FIXTURES, RECEPTACLES AND TELEPHONE OUTLETS, ETC. SHALL BE DETERMINED BY ACTUAL CONDITIONS IN THE FIELD.
4. PRIOR TO BIDDING, CONTRACTOR SHALL VISIT THE JOB SITE AND FAMILIARIZE THEMSELVES WITH THE EXISTING CONDITIONS.
5. ELECTRICAL CONTRACTOR SHALL COORDINATE HIS WORK WITH OTHER TRADES AND WITH OTHER CONTRACTORS WHOSE WORK MAY AFFECT THIS INSTALLATION.
6. ELECTRICAL CONTRACTOR SHALL COORDINATE INCOMING ELECTRICAL SERVICE WITH UTILITY COMPANY AND INCLUDE IN HIS BID ALL CHARGES AND FEES INCURRED IN MODIFICATIONS.
7. ELECTRICAL CONTRACTOR SHALL COORDINATE THE TELEPHONE INSTALLATION WITH THE TELEPHONE COMPANY AND THE GENERAL CONTRACTOR.
8. ELECTRICAL CONTRACTOR, BEFORE INSTALLING ANY OF THE WORK, SHALL SEE THAT IT DOES NOT INTERFERE WITH CLEARANCES REQUIRED FOR FINISHED COLUMNS, HUNG CEILINGS, PLASTER, PARTITIONS, WALLS, ETC. AS SHOWN IN THE ARCHITECTURAL DRAWINGS AND DETAILS. IF ANY WORK IS INSTALLED AND IT LATER DEVELOPS THAT SUCH DETAILS OR DESIGN CANNOT BE FOLLOWED, THE CONTRACTOR, AT HIS OWN EXPENSE, SHALL MAKE SUCH CHANGES IN THE WORK AS DIRECTED BY THE ARCHITECT, AS WELL AS TO PERMIT THE INSTALLATION OF THE ARCHITECTURAL WORK AS SHOWN ON THE PLANS AND DETAILS.
9. PERFORM TEST REQUIRED BY THE OWNER OR THE ENGINEER IN CONNECTION WITH THE OPERATION OF THE ELECTRICAL SYSTEM IN THE BUILDING. ALL TESTS SHALL BE MADE IN ACCORDANCE WITH THE LATEST STANDARD OF THE IEEE AND THE NATIONAL ELECTRICAL CODE.
10. MINIMUM CONDUCTOR SIZE SHALL BE #12, 600V INSULATION. MINIMUM SIZE CONDUIT SHALL BE 3/4" ELECTRICAL METALLIC TUBING (EMT) FOR INTERIOR USE, 3/4" RIGID ALUMINUM FOR EXTERIOR USE ABOVE GRADE AND 1" SCHEDULE 40 PVC, BURIED A MINIMUM OF 18" FOR NON-VEHICULAR TRAFFIC AREAS, FOR CONDUITS BELOW GRADE. EMT SHALL BE USED WITH METAL STUD CONSTRUCTION AND ALL ASSEMBLY OCCUPANCIES. 6 FT LENGTH MC CABLE IS ALLOWED ABOVE DROPPED CEILING. INTERIOR FITTINGS SHALL BE CAST WHERE EXPOSED ON WALLS, AND EXTERIOR FITTINGS SHALL BE CAST BOXES WITH NEMA 3R COVER(S).
11. CONTRACTOR SHALL INSTALL WIRING AND OTHER CIRCUIT COMPONENTS TO MATCH EQUIPMENT ACTUALLY INSTALLED.
12. ALL 120V RUNS LONGER THAN 60 FEET SHALL BE #10 AWG AND 277V RUNS LONGER THAN 150 FEET SHALL BE #10 AWG UNLESS NOTED OTHERWISE.
13. INSTALL GROUND FAULT RECEPTACLES AT RECEPTACLE LOCATIONS WITHIN 5' OF SINKS OR LAVATORIES, AND AT EXTERIOR LOCATIONS. EXTERIOR RECEPTACLES SHALL ALSO BE WATERPROOF. ALL RECEPTACLES IN A KITCHEN AREA SHALL HAVE GROUND FAULT PROTECTION.
14. BONDING AND GROUNDING SHALL BE IN ACCORDANCE WITH NFPA 70:250-65, NFPA 250-23, 250-11 & 250-12.
15. GROUND NEUTRAL IN ACCORDANCE WITH NFPA 70:250-230.
16. FUSES SHALL BE ITT CLASS K5, 250 VOLT, 200,000 AMP INTERRUPTING CAP.
17. PROVIDE SERVICES OF A FIRE/SMOKE DETECTION AND ALARM COMPANY TO DESIGN AND INSTALL ALARM SYSTEM TO MEET REQUIREMENTS OF THE STATE FIRE MARSHALL AND THE FIRE DISTRICT.
18. EXTERIOR LIGHTING SHALL BE SHADED OR INWARDLY DIRECTED IN SUCH A MANNER SO THAT NO DIRECT LIGHTING OR GLARE IS CAST BEYOND THE PROPERTY LINE. THE INTENSITY OF SUCH LIGHTING SHALL NOT EXCEED ONE FOOT CANDLE AS MEASURED AT THE ABUTTING PROPERTY LINE.
19. ALL ELECTRICAL, MECHANICAL AND PLUMBING PENETRATING FIRE PARTITIONS SHALL BE FIRE CALKED (PENETRATIONS THROUGH RATED CONSTRUCTION SHALL BE SEALED WITH A MATERIAL CAPABLE OF PREVENTING THE PASSAGE OF FLAMES AND HOT GASES WHEN TESTED IN ACCORDANCE WITH ASTM-E214.)
20. VERIFY ELECTRICAL CONNECTIONS PER MANUFACTURER'S RECOMMENDATIONS.



15 POWER PLAN
 SCALE: 1/8"=1'-0"

DAMMON
ENGINEERING, INC.
 LOUISIANA & MISSISSIPPI
 Chief Engineer: Brian Mistich, PE
 554 Old Spanish Trail
 Slidell, LA 70458
 www.dammonengineering.com
 info@dammonengineering.com
 PH: 985.649.5832

#	DESCRIPTION	DATE



LEGEND

- 15 AMP - 120 VOLT, DUPLEX CONVENIENCE OUTLET, MOUNTED AT 18" A.F.F., UNLESS NOTED OTHERWISE.
- 15 AMP - 120 VOLT, GROUND FAULT DUPLEX CONVENIENCE OUTLET, MOUNTED AT 18" A.F.F., UNLESS NOTED OTHERWISE.
- 15 AMP - 120 VOLT, QUADRAPLEX (2 DUPLEX) CONVENIENCE OUTLETS, MOUNTED AT 18" A.F.F., UNLESS NOTED OTHERWISE.
- 15 AMP - 120 VOLT, DUPLEX CONVENIENCE OUTLET, "FLOOR" MOUNTED.
- 15 AMP - 120 VOLT, QUADRAPLEX (2 DUPLEX) CONVENIENCE OUTLETS, "FLOOR" MOUNTED.
- 15 AMP - 120 VOLT, GROUND FAULT DUPLEX CONVENIENCE OUTLET, WITH WEATHERPROOF COVER PLATE, MOUNTED AT 18" A.F.F., UNLESS NOTED OTHERWISE.
- 250 VOLT, SINGLE OUTLET, MOUNTED AT 18" A.F.F., UNLESS NOTED OTHERWISE. COORDINATE AMPERAGE AND PLUG CONFIGURATION WITH EQUIPMENT BEING SERVED.
- DUAL VOICE/DATA OUTLET, MOUNTED AT 18" A.F.F., UNLESS NOTED OTHERWISE.
- DATA OUTLET, MOUNTED AT 18" A.F.F., UNLESS NOTED OTHERWISE.
- COAXIAL TELEVISION OUTLET, MOUNTED AT 18" A.F.F., UNLESS NOTED OTHERWISE.
- ELECTRICAL DISCONNECT SWITCH, SIZED, CIRCUITED, AND MOUNTED PER CODE.
- ELECTRICAL PANEL, SIZED, CIRCUITED, AND MOUNTED PER CODE.
- ELECTRIC METER, MOUNTED PER CODE.

NEW OFFICE WAREHOUSE
ZEIGLER & TIMBER, CO.
 L.A. HWY 1085 DEER CROSS DRIVE
 MADISONVILLE, LA 70447
 JOB No: 2893 DATE: 7-25-2011
 DRAWN BY: CKD CHECKED BY: EBAN

SHEET TITLE:
POWER PLAN

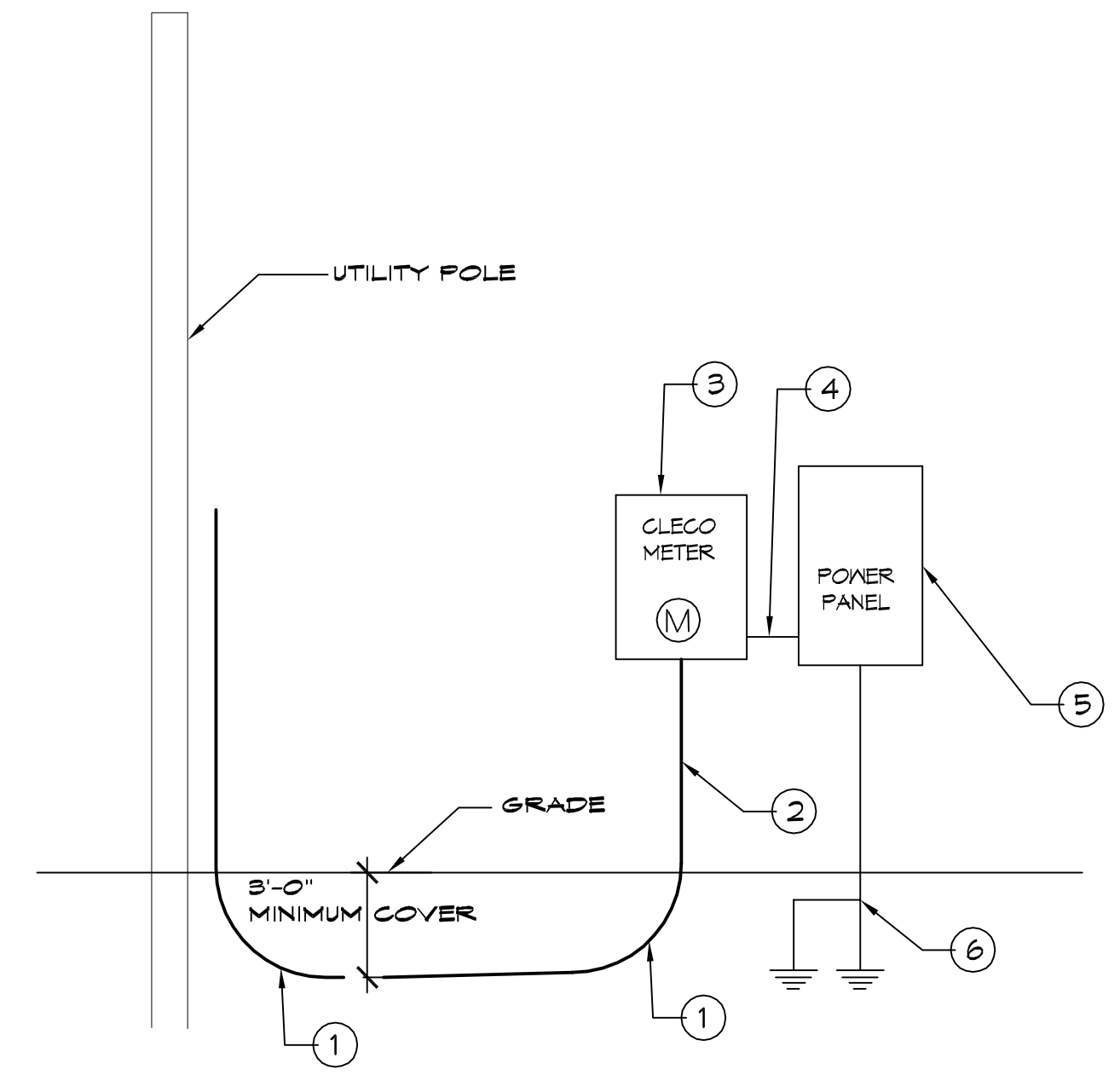
DRAWING NUMBER:

E101

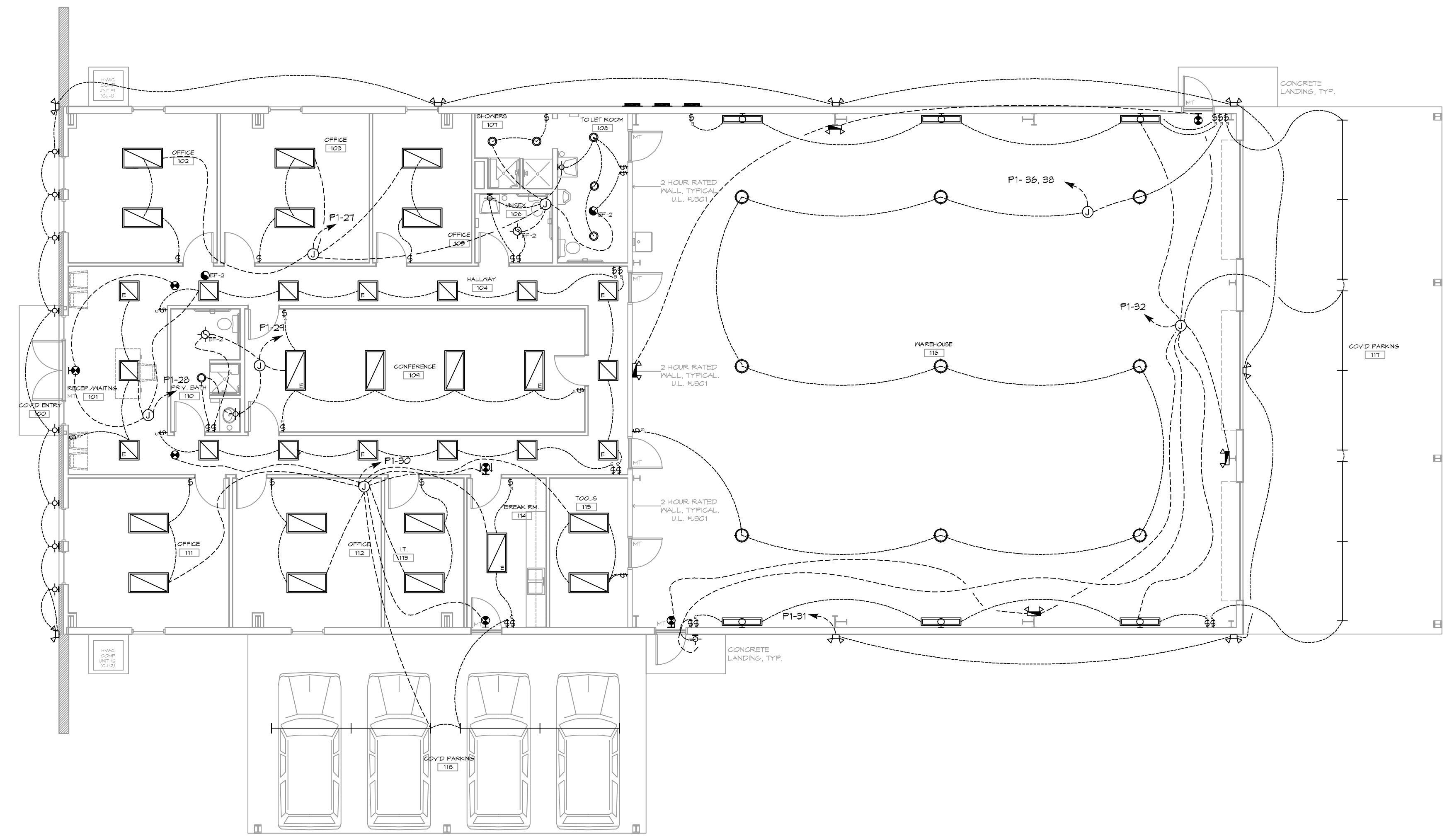
GENERAL LIGHTING NOTES

1. ALL WORK SHALL COMPLY WITH APPLICABLE NATIONAL, STATE, AND LOCAL CODES, RULES, REGULATIONS, AND REQUIREMENTS OF THE SERVICE UTILITY COMPANY.
2. GENERAL CONTRACTOR SHALL NOTIFY THE ARCHITECT IMMEDIATELY IF ANY CONFLICTS OCCUR BETWEEN LIGHTING AND ANY OTHER TRADE. DO NOT PROCEED WITH INSTALLATION IN THAT AREA UNTIL CONFLICT HAS BEEN RESOLVED TO THE SATISFACTION OF THE ARCHITECT AND ENGINEER.
3. REFER TO ARCHITECTURAL DRAWINGS FOR EXACT LOCATION AND MOUNTING INSTRUCTIONS FOR ALL LIGHT FIXTURES. NOTIFY THE ARCHITECT AND ENGINEER OF ANY DISCREPANCIES BETWEEN THESE PLANS AND THE ARCHITECTURAL PLANS RELATING TO QUANTITY, TYPE AND LOCATION OF DEVICES AND/OR FIXTURES.
4. WHEN SPECIFIC LIGHT FIXTURE HAS BEEN SPECIFIED IN THE FIXTURE SCHEDULE, ELECTRICAL CONTRACTOR SHALL PROVIDE COMPLETE ASSEMBLY INCLUSIVE ALL PARTS AND HARDWARE TO INSURE PROPER FUNCTIONING FIXTURE.
5. ALL CONDUCTORS SHALL BE A MINIMUM OF #12 AWG UNLESS NOTED OTHERWISE.
6. ALL 120V RUNS LONGER THAN 60 FEET SHALL BE #10 AWG AND 277V RUNS LONGER THAN 150 FEET SHALL BE #10 AWG UNLESS NOTED OTHERWISE.
7. ALL CONDUCTORS SHALL BE COPPER.
8. WHERE CONDUCTOR SIZES ARE NOTED ON DRAWINGS, THAT WIRE SIZE SHALL BE THROUGH THE ENTIRE RUN UNLESS OTHERWISE NOTED.
9. MOUNTED LIGHT SWITCHES 48" AFF UNLESS NOTED OTHERWISE ON ARCHITECTURAL DRAWINGS.
10. WHERE MORE THAN ONE SWITCH OCCURS IN THE SAME LOCATION, THEY SHALL BE INSTALLED IN A GANG TYPE BOX UNDER ONE COVER PLATE. ALL GANGED SWITCHES SHALL HAVE A COMMON SEAMLESS FACEPLATE. EACH MULTI-GANGED BOX SHALL BE NO MORE THAN SIX (6) SWITCHES WIDE. WHERE MORE THAN SIX (6) SWITCHES ARE SHOWN AT ONE (1) LOCATION, ADDITIONAL MULTI-GANGED BOXES SHALL BE STACKED VERTICALLY AND THE WIDTH OF THE MULTI-GANGS SHALL BE AS EVEN AS POSSIBLE.
11. EACH DIMMER SWITCH SHALL HAVE A WATTAGE RATING 25% HIGHER THAN THE TOTAL WATTAGE OF ALL LIGHTS TO BE CONTROLLED BY THE DIMMER. DIMMER SIZES 600, 1000, 1500, AND 2000 WATTS, LUTRON NOVA T-STAR. WHERE SWITCHES ARE GANGED WITH DIMMERS, THE SWITCHES SHALL ALSO BE LUTRON NOVA T-STAR. FLUORESCENT AND LOW VOLTAGE DIMMERS SHALL BE LUTRON NOVA T-STAR.
12. WHERE FLUORESCENT FIXTURES ARE SHOWN TO BE DIMMED, THE FIXTURES SHALL HAVE DIMMING TYPE BALLASTS WHICH ARE COMPATIBLE WITH THE SPECIFIED DIMMERS.
13. WHERE LED FIXTURES/LAMPS ARE SHOWN TO BE DIMMED, THE DIMMER SHALL BE COMPATIBLE WITH THE FIXTURE/LAMP SPECIFIED OR PROVIDED.
14. ALL EMERGENCY EXIT LIGHT FIXTURES SHALL HAVE 90 MINUTE BATTERY BACKUP WITH INTEGRAL TEST BUTTON AND SHALL BURN CONTINUOUSLY.
15. ALL FLUORESCENT FIXTURES THAT UTILIZE DOUBLE-ENDED LAMPS AND CONTAIN BALLASTS SHALL BE PROVIDED WITH A DISCONNECTING MEANS IN ACCORDANCE WITH NEC 410.73G.

PANEL SCHEDULE											
PANEL #1		PANEL #1		VOLTAGE		ENCLOSURE		120/240V, 228A, 1Ø, 3Ø		FLOOR MOUNTED, NEMA 1 PANEL, 48" X 48" X 18"	
QTY	THHN WIRE SIZE	LOAD DESCRIPTION	BREAKER	LOAD (KVA)	AD	OB	LOAD (KVA)	BREAKER	LOAD DESCRIPTION	THHN WIRE SIZE	QTY
1	#10	25 TON CU-1	20	2	13	24	24	2	25 TON AHU-1, 3.5 KA	#10	2
5	#10	5 TON CU-2	60	2	35	41	41	2	5 TON AHU-2, 4.8 KA	#10	6
9	#10	HOT WATER HEATER	30	2	23	11	11	2	GRINDER PUMP/LIFT STATION	#10	10
11	#12	ROOM 111 OUTLETS	20	1	13	14	14	1	ROOMS 102 & 103 OUTLETS	#12	14
15	#12	ROOMS 114 & 115 OUTLETS	20	1	13	14	14	1	ROOM 119 & HALLWAY OUTLETS	#12	16
17	#12	ROOM 104 OUTLETS	20	1	13	14	14	1	ROOMS 101, 110 & HALLWAY 104 OUTLETS	#12	18
19	#12	ROOM 102 OUTLETS	20	1	14	14	14	1	ROOM 105 & 109 OUTLETS	#12	20
21	#12	ROOM 105 & HALLWAY 116 OUTLETS	20	1	14	14	14	1	WAREHOUSE 116 OUTLETS	#12	22
23	#12	WAREHOUSE 116 OUTLETS	20	1	14	14	14	1	WAREHOUSE 116 OUTLETS	#12	24
25	#12	WAREHOUSE 116 OUTLETS	20	1	17	19	19	1	ENTRANCE 101 & HALLWAY 104 OUTLETS	#12	26
27	#12	RW 101 & 110 LIGHTS	20	1	0.4	0.4	0.4	1	RW 111, 112, 113, 114, 115 & 110 LIGHTS	#12	30
31	#12	OUTSIDE LIGHTS	20	1	0.9	0.9	0.9	1	RW 118 STRIP LIGHTS, 111 LIGHTS	#12	32
33	-	SPARE	20	1	-	-	-	1	SPARE	-	34
35	-	SPARE	20	1	-	-	-	2	WAREHOUSE 116 BAY LIGHTS	#12	36
37	-	SPARE	20	1	-	-	-	1.0	OUTSIDE 240V OUTLET	#12	38
39	#10	WAREHOUSE 116 240V OUTLET	30	2	2.9	2.9	2.9	2	OUTSIDE 240V OUTLET	#10	40
41	#10	WAREHOUSE 116 240V OUTLET	30	2	2.9	2.9	2.9	2	OUTSIDE 240V OUTLET	#10	42
				TOTAL CONNECTED LOAD = 65.1 kW		GROUND BUS		GROUND WIRE (#2)			
				AD = 33.9 kW		OB = 31.2 kW					



- ONE LINE NOTES:**
1. 36" LONG SWEEP ELBOW
 2. PROVIDE TWO (2) 4" SCHEDULE 40 PVC CONDUIT BELOW GRADE AND SCH 80 PVC CONDUIT ABOVE GRADE WITH SUITABLE FISH WIRE.
 3. 120/240V 1Ø 225amp METER PAN.
 4. 3-250 MCM THHN, 1-#2 CU GND, 2 1/2" C
 5. 120/240V 1Ø 225amp PANELBOARD WITH MAIN BREAKER.
 6. 2-3/4" x 10' CU CLAD GND ROD, #2 CU GND WIRE. PROTECT IN PVC PIPE. CONNECT TO METAL BLDG, COLD WATER SUPPLY & GAS LINE. CAD WELD ALL CONNECTIONS.



LEGEND

- RECESSED 2' x 4' LED LIGHT FIXTURE, TO BE SELECTED. ('E' DENOTES FIXTURE ON EMERGENCY LIGHTING CIRCUIT)
- RECESSED 2' x 2' LED LIGHT FIXTURE, TO BE SELECTED. ('E' DENOTES FIXTURE ON EMERGENCY LIGHTING CIRCUIT)
- RECESSED LED DOWN LIGHT FIXTURE, TO BE SELECTED. ('E' DENOTES FIXTURE ON EMERGENCY LIGHTING CIRCUIT)
- RECESSED VENT/LIGHT FIXTURE, TO BE SELECTED.
- RECESSED EXHAUST FAN, TO BE SELECTED.
- CEILING MOUNTED LED HIGH-BAY LIGHT FIXTURE, TO BE SELECTED.
- ADJUSTABLE WALL WASHER LIGHT FIXTURE, TO BE SELECTED.
- 8' L CEILING MOUNTED LED STRIP LIGHT FIXTURE, TO BE SELECTED.
- WALL MOUNTED LED LIGHT FIXTURE, TO BE SELECTED.
- WALL MOUNTED SECURITY LIGHT FIXTURE, TO BE SELECTED.
- SINGLE POLE WALL SWITCH, MOUNTED AT 48" A.F.F., UNLESS NOTED OTHERWISE.
- THREE WAY WALL SWITCH, MOUNTED AT 48" A.F.F., UNLESS NOTED OTHERWISE.
- FOUR WAY WALL SWITCH, MOUNTED AT 48" A.F.F., UNLESS NOTED OTHERWISE.
- WALL OR CEILING MOUNTED EXIT LIGHT, WITH BATTERY BACKUP ON EMERGENCY CIRCUIT, TO BE SELECTED.
- WALL MOUNTED EMERGENCY LIGHT, WITH BATTERY BACKUP ON EMERGENCY CIRCUIT, TO BE SELECTED.
- ELECTRICAL DISCONNECT SWITCH, SIZED, CIRCUITED, AND MOUNTED PER CODE.
- ELECTRICAL PANEL, SIZED, CIRCUITED, AND MOUNTED PER CODE.
- ELECTRIC METER, MOUNTED PER CODE.
- JUNCTION BOX

DAMMON ENGINEERING, INC.
LOUISIANA & MISSISSIPPI

www.dammonengineering.com
info@dammonengineering.com
PH: 985.649.5832

Chief Engineer: Brian Mestich, PE
1554 Old Spanish Trail
Stellie, LA 70468

REVISIONS	DATE	DESCRIPTION

SEAL:

NEW OFFICE WAREHOUSE

ZEIGLER & TIMBER, CO.

L.A. HWY 0285 DEER CROSS DRIVE
MADISONVILLE, LA 70447

JOB NO: 2383 DATE: 7-25-2019
DRAWN BY: C&D CHECKED BY: BAW

SHEET TITLE:
LIGHTING PLAN

DRAWING NUMBER:
E102

SHEET No: 6 of 6

16 LIGHTING PLAN
SCALE: 1/8"=1'-0"

