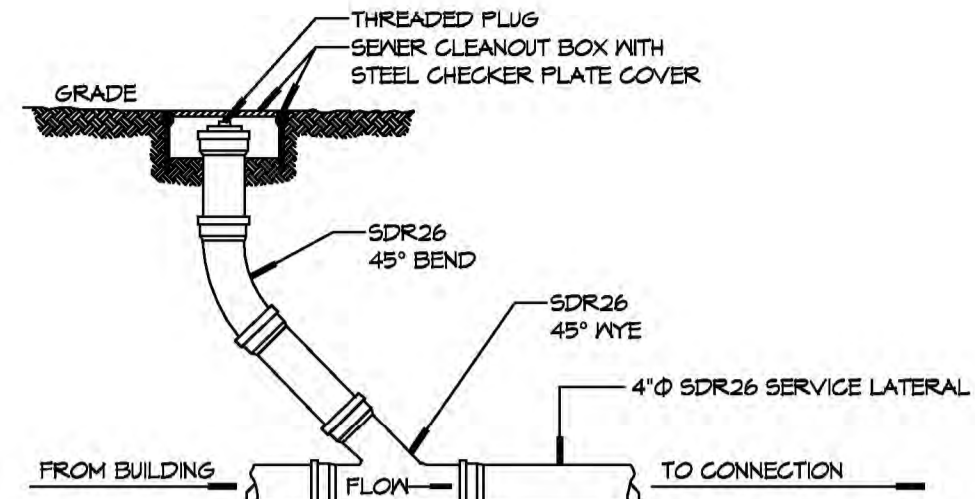
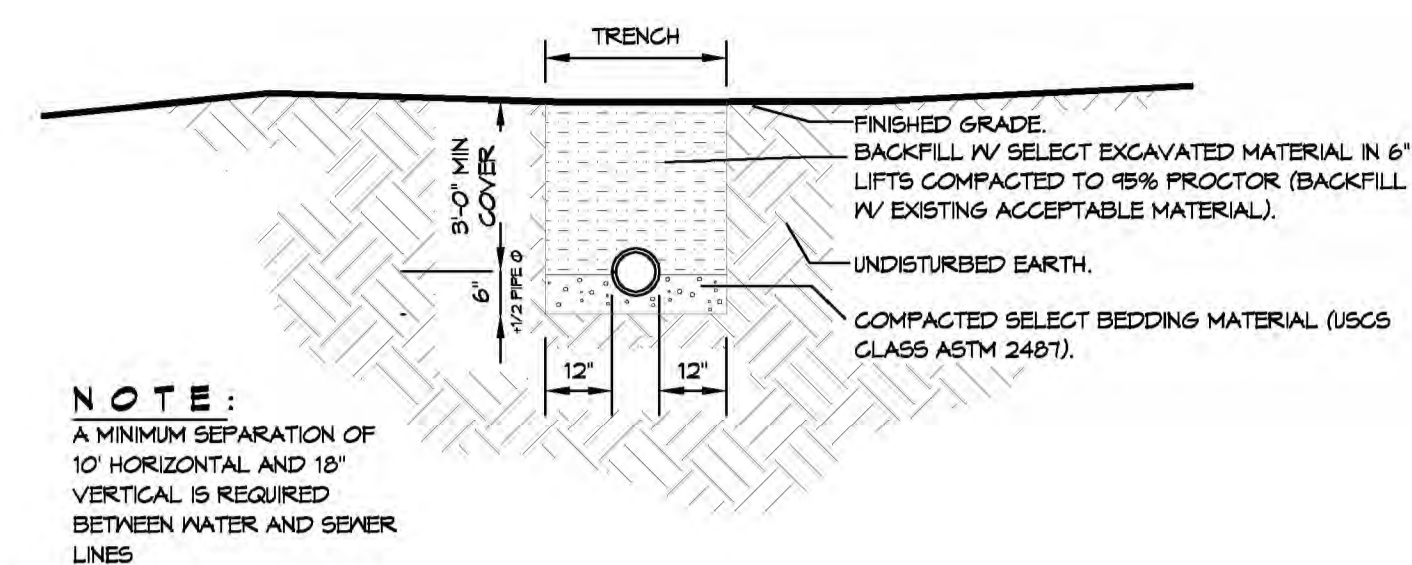


2 DETAIL
SCALE: N.T.S.
TYPICAL PIPE BEDDING



3 DETAIL
SCALE: N.T.S.
SEWER CLEAN OUT



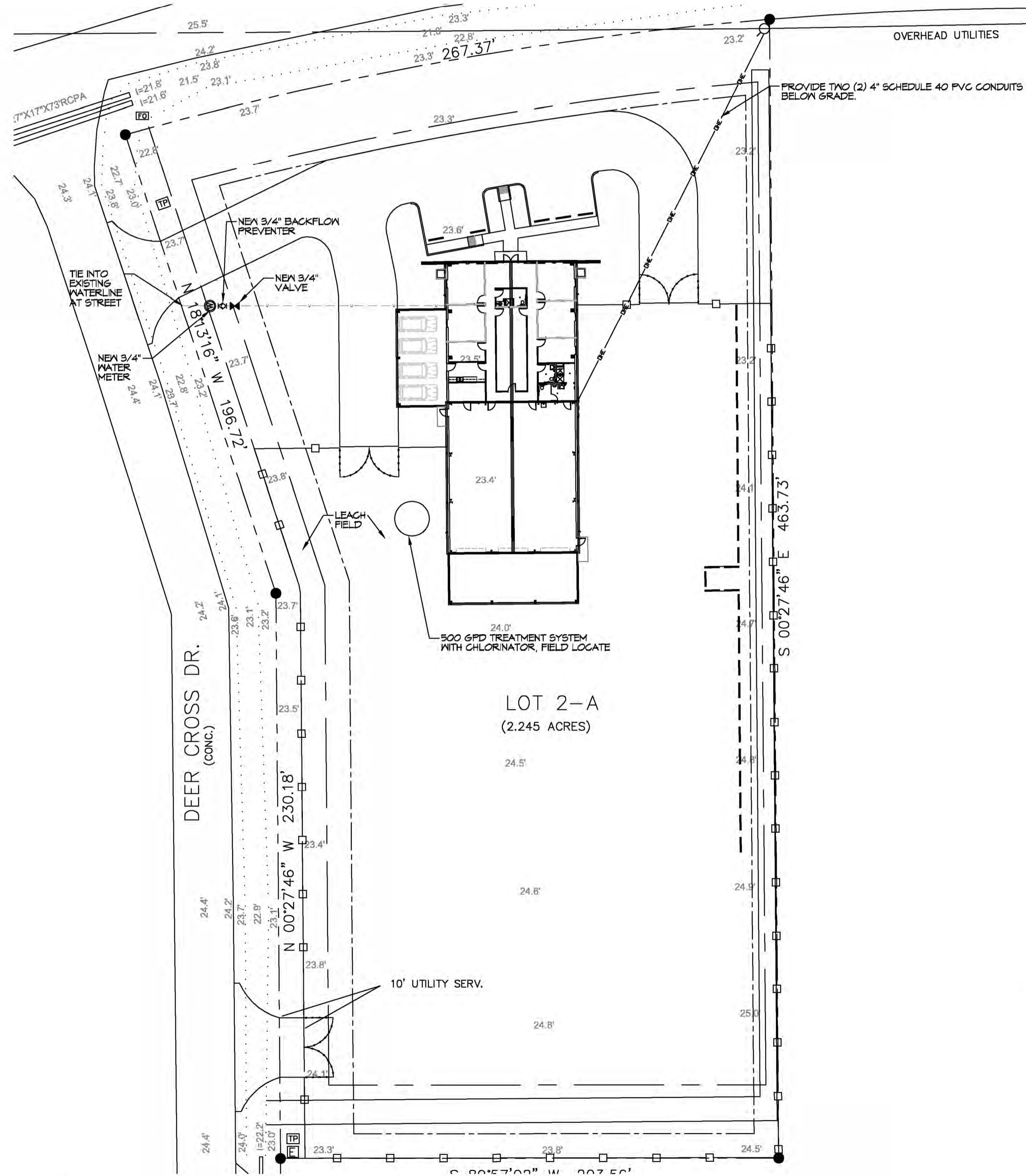
4 DETAIL
SCALE: N.T.S.
SEWER AND WATER SEPERATION

GENERAL SITE NOTES

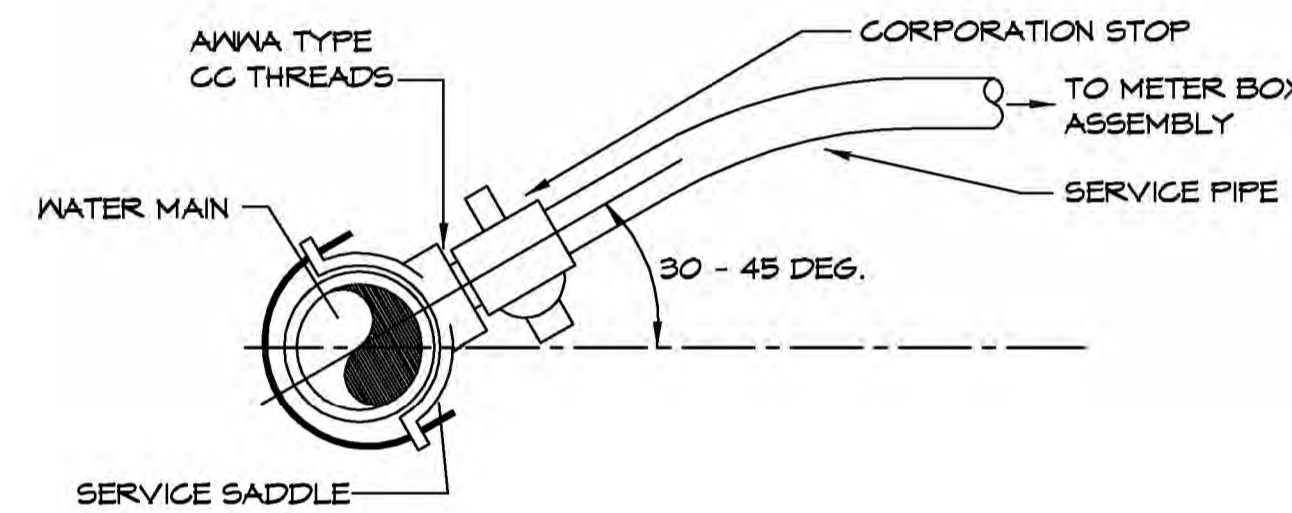
1. PROVIDE ALL LABOR, MATERIAL AND EQUIPMENT FOR A COMPLETE OPERATING SYSTEM. CONTRACTOR IS TO FIELD VERIFY ALL EXISTING UTILITY LOCATIONS, ELEVATIONS, AND INVERTS PRIOR TO COMMENCING ANY WORK. CONTRACTOR SHALL PAY NECESSARY FEES FOR THE UTILITIES CONNECTIONS.
2. CONTRACTOR TO BE RESPONSIBLE TO VERIFY ANY INVERTS AND SET NEW INVERTS OF SEWAGE AND DRAINAGE PIPES.
3. ALL WORK AND MATERIAL TO COMPLY STRICTLY TO THE LATEST LOCAL CITY PARISH, STATE, AND NATIONAL GOVERNING CODES.
4. SEWAGE LINES 3" AND SMALLER SHALL BE SLOPED 1/4" PER FOOT AND LINES THAT ARE 4" AND LARGER SHALL BE SLOPED 1/8" PER FOOT.
10. CONTRACTOR SHALL CONTACT LOUISIANA ONE CALL PRIOR TO COMMENCEMENT OF SITE EXCAVATION.

SITE UTILITIES LEGEND

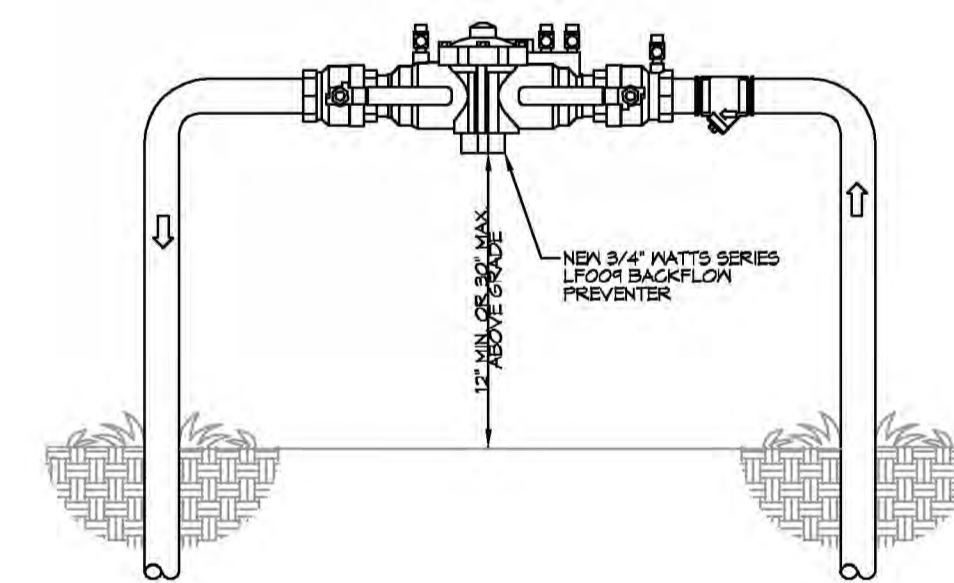
- - - - - NEW WATER LINE
- - - - - NEW ELECTRICAL LINE



1 SITE UTILITY PLAN
SCALE: 1" = 30'-0"



5 WATER SERVICE CONNECTION
SCALE: N.T.S.
TYPICAL



6 TYPICAL RISER DETAIL
SCALE: N.T.S.
TYPICAL

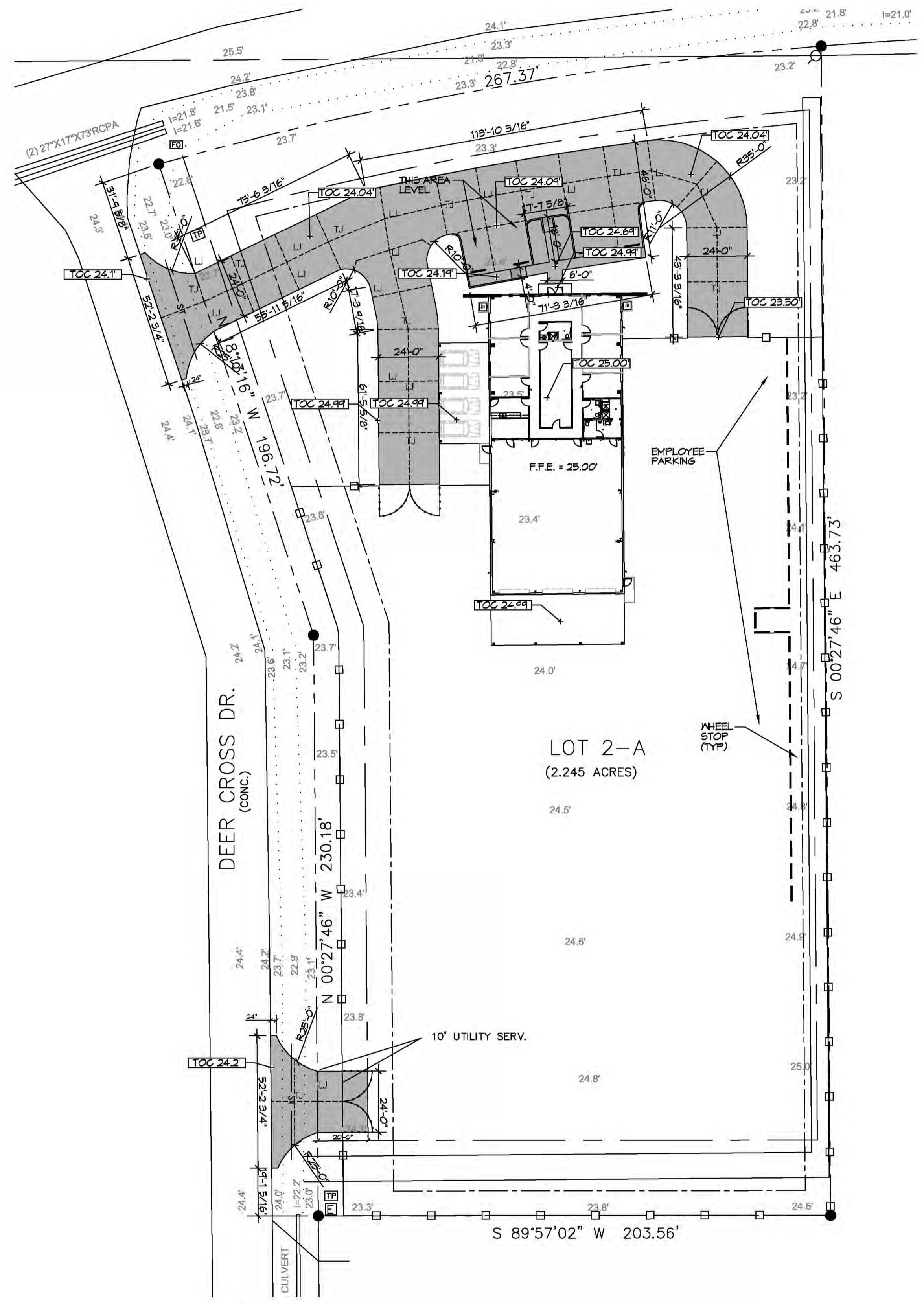
CONTRACTOR SHALL CONTACT TAMMANY UTILITIES, (TU) @ 905-893-1117 REGARDING WATER AND SEWERAGE AVAILABILITY. WATER COULD BE AVAILABLE THROUGH A BORE. SEWERAGE MAY BE AVAILABLE WITH THE INSTALLATION OF A LIFT STATION. IF TU DETERMINES WATER AND OR SEWERAGE IS NOT AVAILABLE, YOU MUST CONTACT THIS OFFICE FOR FURTHER DISCUSSION AND OR INSTRUCTIONS. GRETCHEN SEYMOUR 09-06-19

DAMMON ENGINEERING, INC.
LOUISIANA & MISSISSIPPI
www.dammonengineering.com
info@dammonengineering.com
PH: 982.647.2828
Chief Engineer: Brian Misch, PE
556 Old Spanish Trail
Shreveport, LA 71208

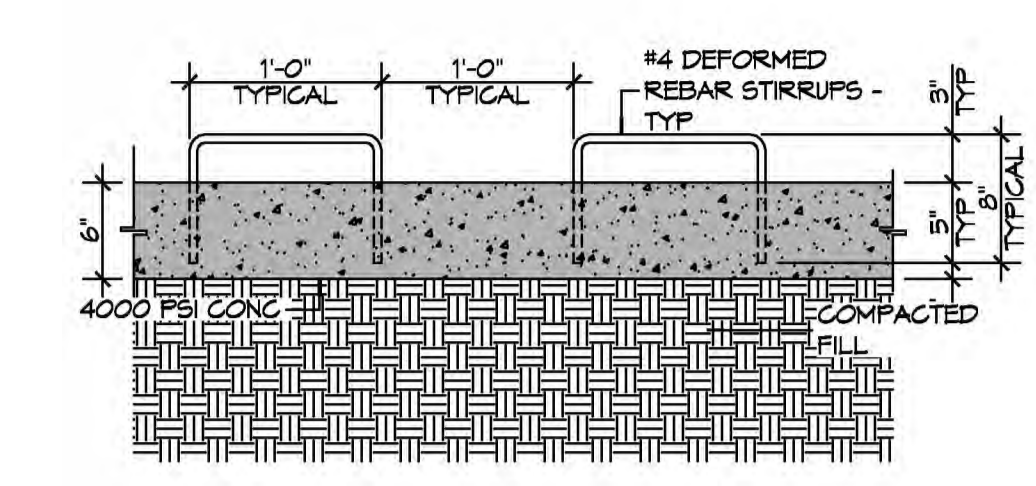
REVISIONS	DATE	DESCRIPTION

SEAL:

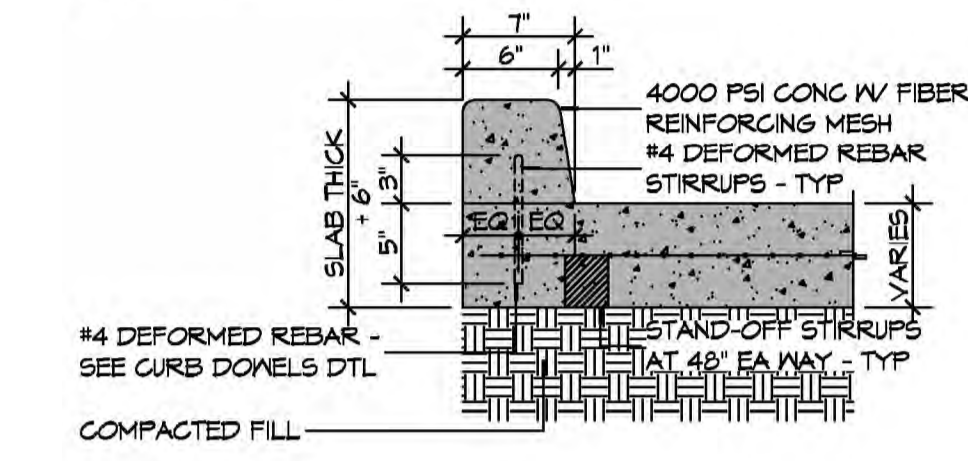
NEW OFFICE WAREHOUSE
ZEIGLER, CO.
 L.A. HWY 1025 DEER CROSS DRIVE
 MADISONVILLE, LA 70447
 JOB No: 2393 DATE: 9-26-2019
 DRAWN BY: CASD CHECKED BY: BAW
 SHEET TITLE: SITE UTILITY PLAN
 DRAWING NUMBER: **C100**
 SHEET No: 1 of 2



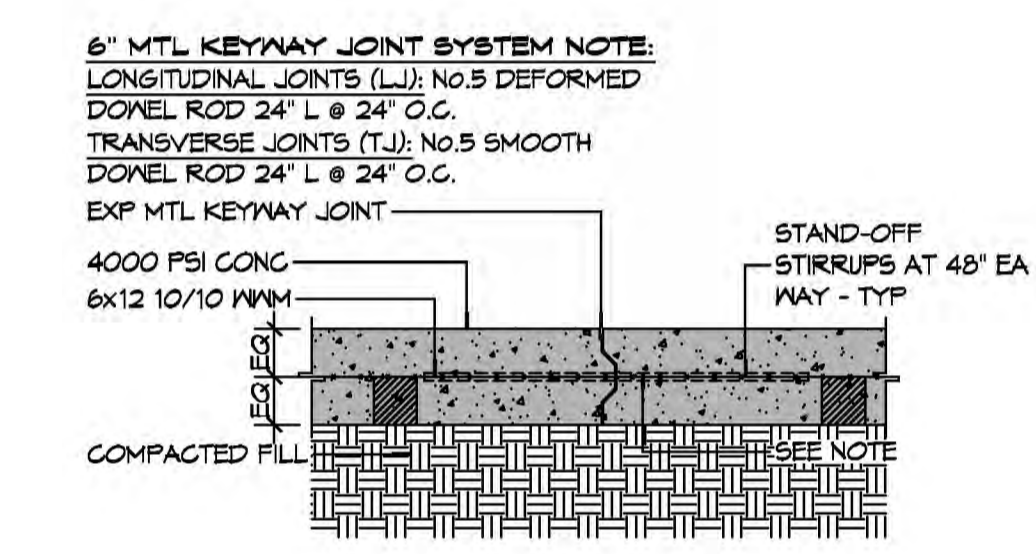
7 SITE PAVING PLAN
SCALE: 1" = 30'-0"



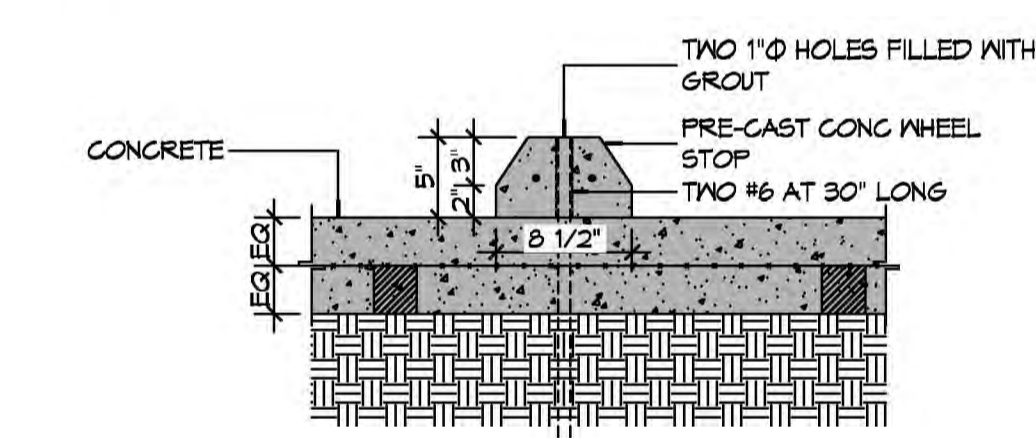
F CURB DOWEL DETAIL



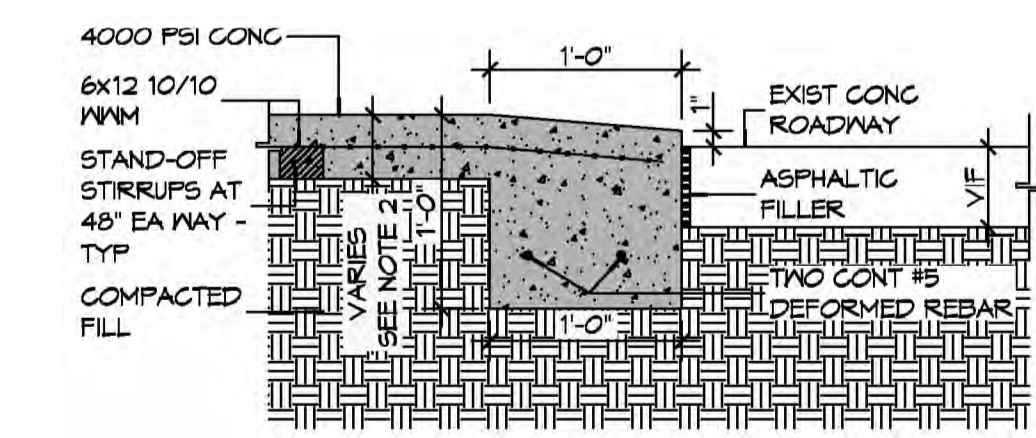
E TYPICAL CURB



D TYPICAL PAVEMENT JOINT



C TYPICAL WHEEL STOP

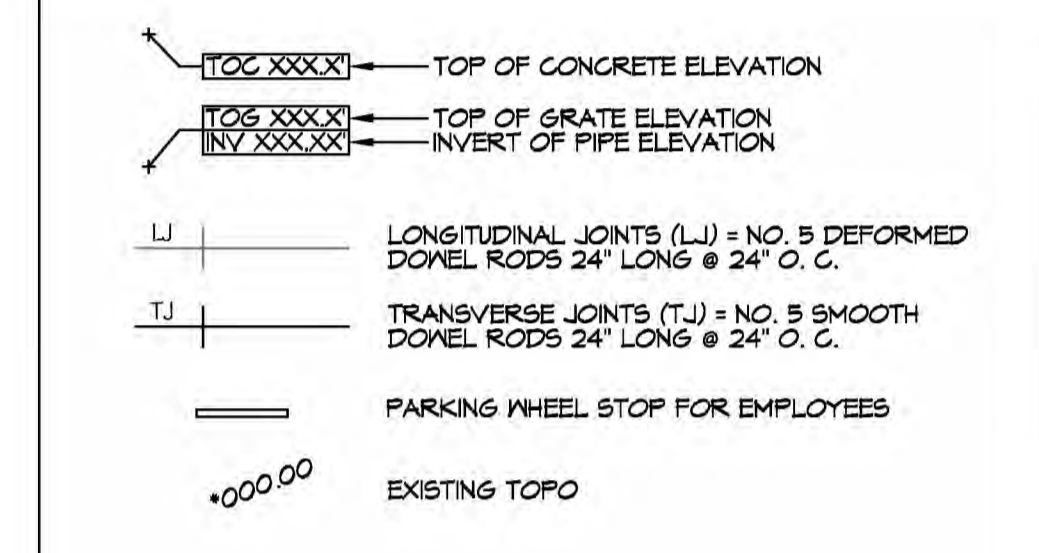


A DRIVEWAY ROLLOVER CURB

GENERAL PAVING NOTES

- ALL NEW CONCRETE SHALL HAVE A MINIMUM COMPRESSIVE STRENGTH OF 4,000 PSI AT 28 DAYS AND A MINIMUM THICKNESS OF 6". CONCRETE MIX SHALL BE IN ACCORDANCE WITH THE LATEST REVISION OF ASTM C-150 TYPE 1.
- CONCRETE PAVING THICKNESS SHALL VARY AS FOLLOWS:
 - APRONS & LOADING AREAS = 8" THICKNESS (INDICATED WITH CROSS HATCH WHERE OCCURS)
 - DRIVE LANES & PARKING AREAS = 6" THICKNESS (STANDARD UNO)
- ALL REINFORCING STEEL SHALL MEET ASTM-A615 (GRADE 60).
- ALL REINFORCING STEEL SHALL BE SECURELY SUPPORTED TO PREVENT BOTH VERTICAL AND HORIZONTAL MOVEMENT DURING CONCRETE PLACEMENT. ALL CONTROL AND EXPANSION JOINTS SHALL BE LOCATED AND INSTALLED AS SHOWN ON THE PAVING PLAN AND IN ACCORDANCE WITH THE MANUFACTURER'S RECOMMENDATIONS.
- ALL SUB GRADE FILL SHALL BE SELECT GRANULAR MATERIAL COMPACTED TO 95% STANDARD PROCTOR DENSITY IN A MAXIMUM OF 6" LIFTS.
- ANY WORK WITHIN THE ROADWAY OR ADJACENT TO THE ROADWAY CAUSING AN INTERFERENCE TO VEHICULAR TRAFFIC MUST CONFORM TO THE REQUIREMENTS SET FORTH BY THE UNIFORM MANUAL OF TRAFFIC CONTROL DEVICES OF THE STATE OF LOUISIANA. THE CONTRACTOR MUST FURNISH ALL NECESSARY TRAFFIC SIGNS AND/OR BARRICADES AND MAINTAIN THEM DURING CONSTRUCTION ACTIVITY.

PAVING LEGEND



8 PAVING DETAILS
SCALE: 1" = 1'-0"

DAMMON ENGINEERING, INC.
LOUISIANA & MISSISSIPPI

Chief Engineer: Brian Mitchel, PE
556 Old Spanish Trail
Shreveport, LA 70508
www.dammonengineering.com
info@dammonengineering.com
PH: 985.687.8828

REVISIONS	DATE	DESCRIPTION



NEW OFFICE WAREHOUSE
ZEIGLER TREE & TIMBER, CO.

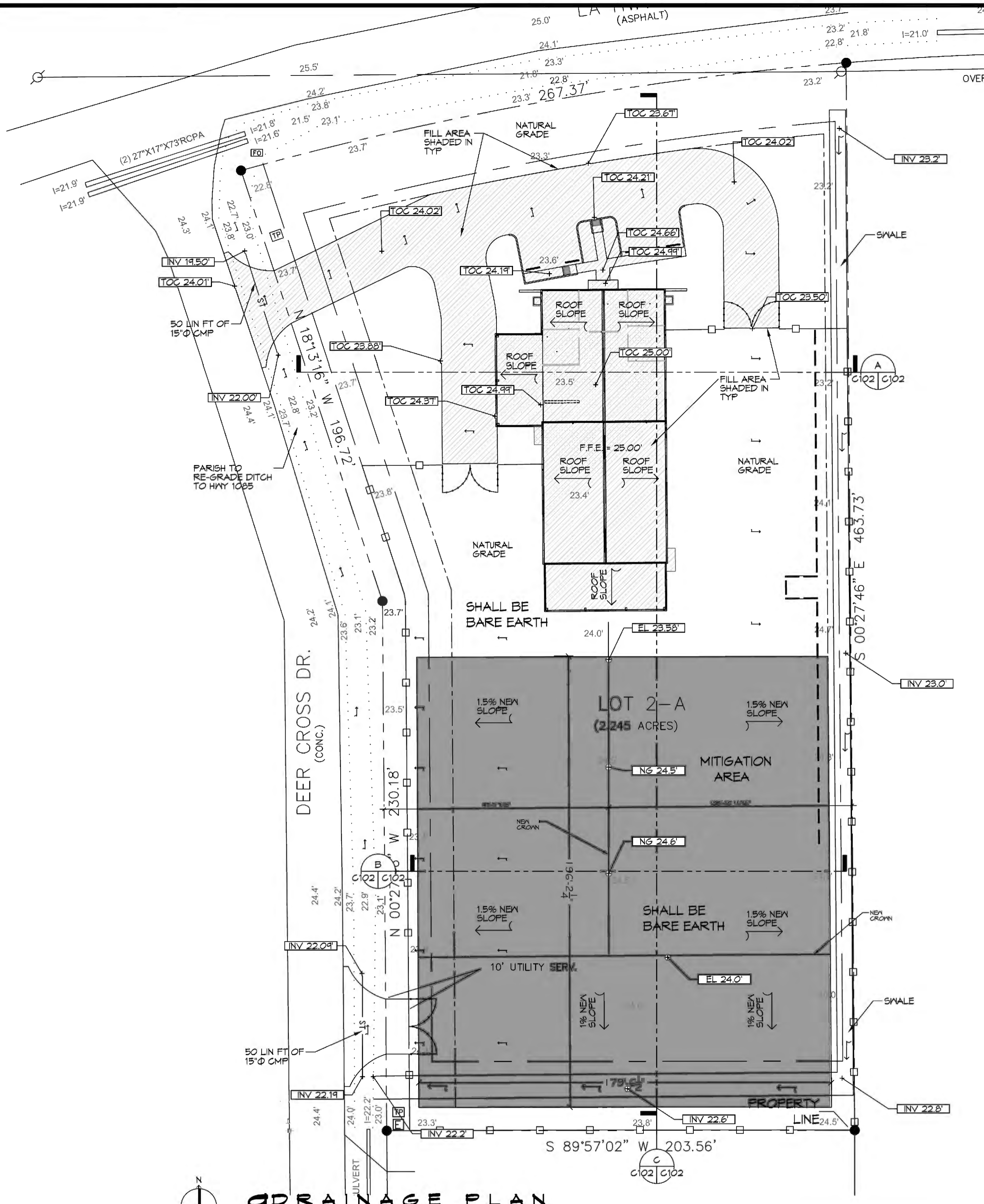
LA. HWY 1025 DEER CROSS DRIVE
MADISONVILLE, LA 70447

JOB No: 2393 DATE: 9-26-2019
DRAWN BY: BMM CHECKED BY: CASD

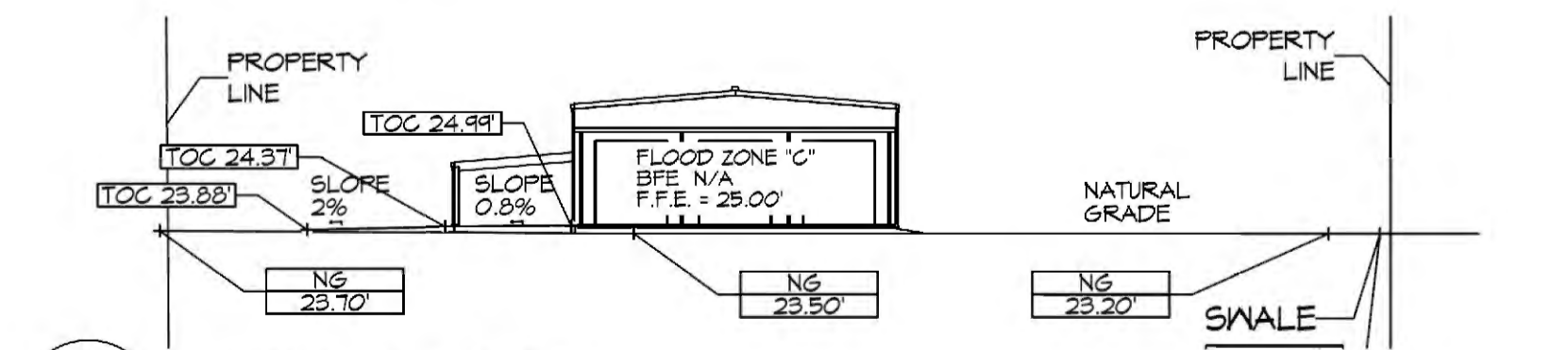
SHEET TITLE:
SITE PAVING PLAN

DRAWING NUMBER:
C101

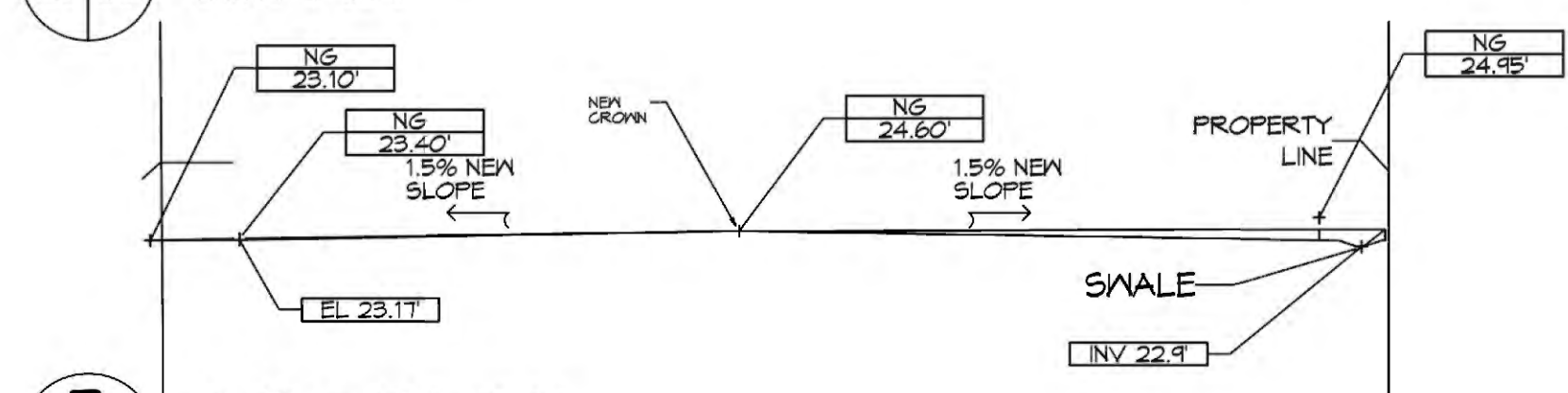
SHEET No: 2 of 2



DRAINAGE PLAN
SCALE: 1" = 30'-0"

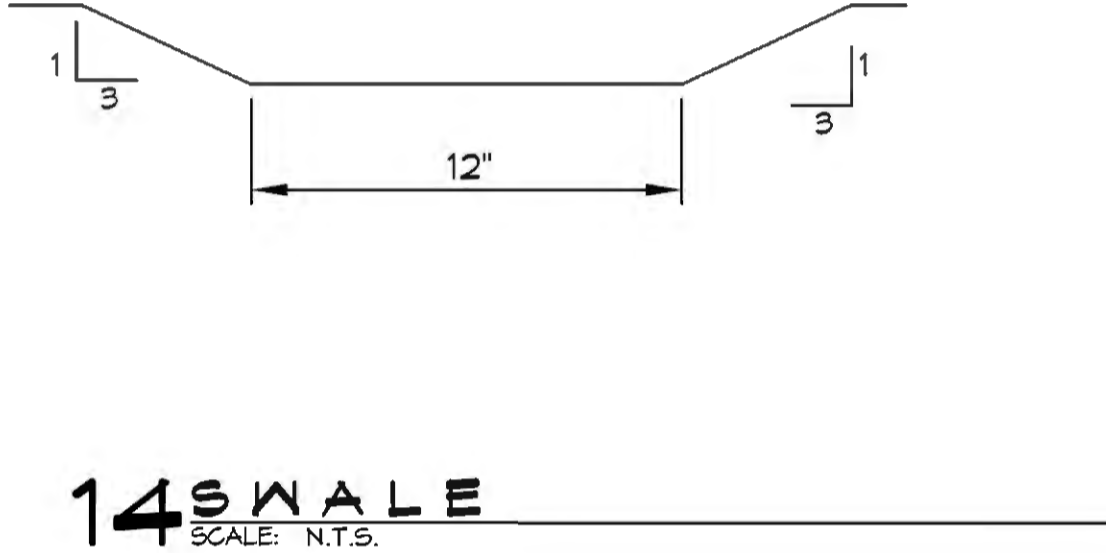
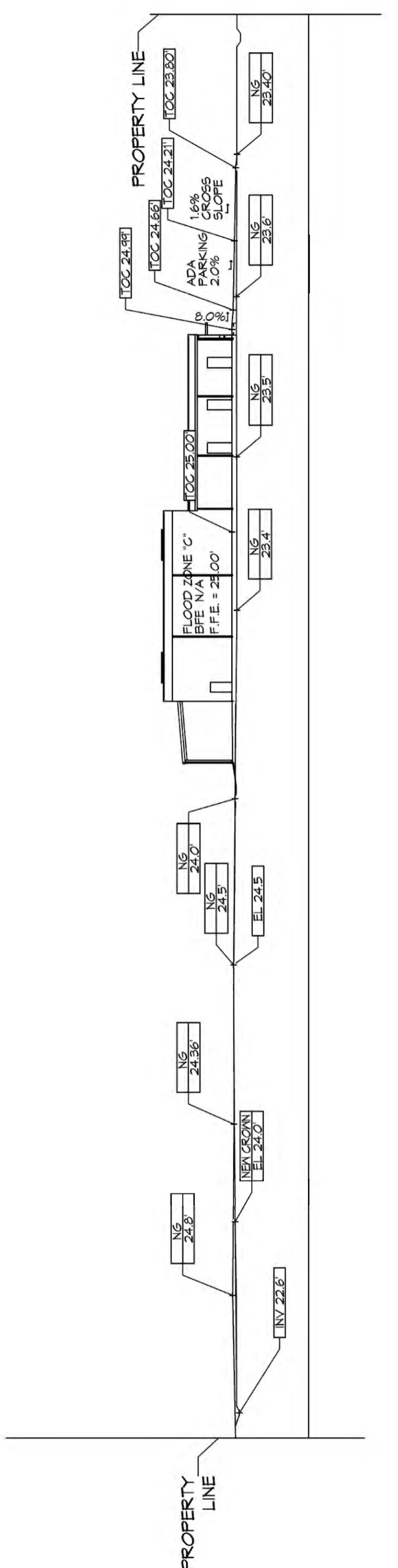


A SECTION
SCALE: 1" = 30'-0"



B SECTION
SCALE: 1" = 30'-0"

C MITIGATION SECTION
SCALE: 1" = 30'-0"



- DRAINAGE NOTES**
- ELEVATIONS SHOWN ARE MSL.
 - FIELD VERIFY ALL ELEVATIONS AND DRAINAGE SYSTEM PLACEMENT PRIOR TO START OF WORK.
 - PROVIDE VERTICAL ELBOW AT DOWNSPOUTS WITH SPLASH BLOCKS.
- DRAINAGE LEGEND**
- TOP OF CONCRETE ELEVATION
 - TOP OF GRATE ELEVATION
 - INVERT OF PIPE ELEVATION
 - CMP (CORRUGATED METAL PIPE) DRAINAGE OF FLOW ARROW. SEE PLAN FOR SIZE
 - NEW ELEVATION
 - NATURAL GRADE
 - SLOPE

DAMMON ENGINEERING, INC.
LOUISIANA & MISSISSIPPI
www.dammonengineering.com
554 Old Spanish Trail
Burrill, LA 70458
Chief Engineer: Brian Mistich, PE
info@dammonengineering.com
PH: 225.687.2533

REVISIONS	DATE	DESCRIPTION
1	9/26/2019	REVISED CUT/FILL CALCS



NEW OFFICE WAREHOUSE
ZEIGLER & TRIMBER, CO.
L.A. HWY 1095 DEER CROSS DRIVE
MADISONVILLE, LA 70447
JOB No: 2383 DATE: 9-26-2019
DRAWN BY: BAKI CHECKED BY: BAKI

CUT/FILL CALCS

FILL MITIGATION VOLUME;
Bldg + Rear Covered Parking (200.7 sf x 53 ft) = 10,637.1 cf
Side Covered Parking (23.1 sf x 40 ft) = 924.0 cf
Paving = (Drive 132.2 sf x 24 ft) + (Drive 16.1 sf x 95 ft) + (Parking 25.7 sf x 71 ft) = 6,527.0 cf
TOTAL = 18,088 cf

CUT MITIGATION VOLUME
Cut Volume = (119.2 s.f. x 145 ft) + (0.1 s.f. x 237 ft) + (53.7 sf x 179.5 ft) = 26,920 cf

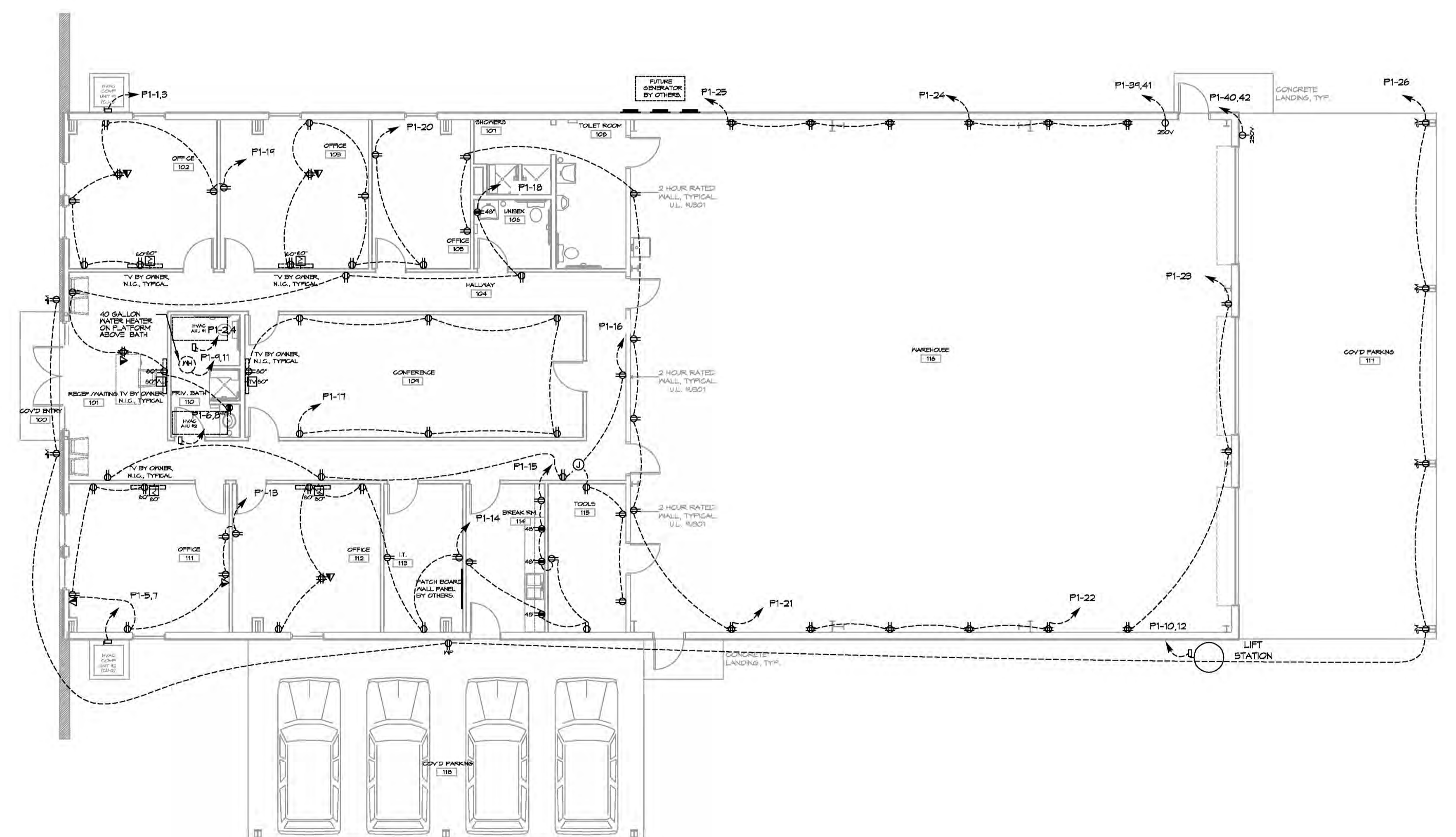
EXCESS CUT TO BE REMOVED OFFSITE

SHEET TITLE:
DRAINAGE AND MITIGATION PLAN

DRAWING NUMBER:
C102

SHEET No: 3 of 3

FILE NAME: A:\0000\000000\0000 - 2019 - Power Plan - 10/11/2019 10:11:29 AM
 PLOT DATE: 10/11/2019 10:11:29 AM
 PLOT TIME: 10:11:29 AM
 PLOT USER: bdammon



15 POWER PLAN
 SCALE: 1/8"=1'-0"

GENERAL POWER NOTES

1. ALL WORK SHALL CONFORM TO THE LATEST EDITION OF THE NATIONAL ELECTRICAL CODE, THE GOVERNING ELECTRICAL CODE AND ALL OTHER INSPECTION DEPARTMENTS HAVING JURISDICTION. OBTAIN CERTIFICATES OR APPROVAL WHERE REQUIRED. ELECTRICAL CONTRACTOR SHALL VERIFY ALL WIRE AND CONDUIT SIZES FOR MECHANICAL EQUIPMENT TO BE INSTALLED.
2. ALL MATERIALS FURNISHED SHALL BE NEW AND SHALL BE U.L. LISTED.
3. THE DRAWINGS INDICATE SIZE AND GENERAL LOCATION OF WORK. SCALE DIMENSIONS SHALL NOT BE USED. THE EXACT LOCATION OF ALL LIGHTING FIXTURES, RECEPTACLES AND TELEPHONE OUTLETS, ETC. SHALL BE DETERMINED BY ACTUAL CONDITIONS IN THE FIELD.
4. PRIOR TO BIDDING, CONTRACTOR SHALL VISIT THE JOB SITE AND FAMILIARIZE THEMSELVES WITH THE EXISTING CONDITIONS.
5. ELECTRICAL CONTRACTOR SHALL COORDINATE HIS WORK WITH OTHER TRADES AND WITH OTHER CONTRACTORS WHOSE WORK MAY AFFECT THIS INSTALLATION.
6. ELECTRICAL CONTRACTOR SHALL COORDINATE INCOMING ELECTRICAL SERVICE WITH UTILITY COMPANY AND INCLUDE IN HIS BID ALL CHARGES AND FEES INCURRED IN MODIFICATIONS.
7. ELECTRICAL CONTRACTOR SHALL COORDINATE THE TELEPHONE INSTALLATION WITH THE TELEPHONE COMPANY AND THE GENERAL CONTRACTOR.
8. ELECTRICAL CONTRACTOR, BEFORE INSTALLING ANY OF THE WORK, SHALL SEE THAT IT DOES NOT INTERFERE WITH CLEARANCES REQUIRED FOR FINISHED COLUMNS, HUNG CEILINGS, PLASTER, PARTITIONS, WALLS, ETC. AS SHOWN IN THE ARCHITECTURAL DRAWINGS AND DETAILS. IF ANY WORK IS INSTALLED AND IT LATER DEVELOPS THAT SUCH DETAILS OR DESIGN CANNOT BE FOLLOWED, THE CONTRACTOR, AT HIS OWN EXPENSE, SHALL MAKE SUCH CHANGES IN THE WORK AS DIRECTED BY THE ARCHITECT, AS WELL AS TO PERMIT THE INSTALLATION OF THE ARCHITECTURAL WORK AS SHOWN ON THE PLANS AND DETAILS.
9. PERFORM TEST REQUIRED BY THE OWNER OR THE ENGINEER IN CONNECTION WITH THE OPERATION OF THE ELECTRICAL SYSTEM IN THE BUILDING. ALL TESTS SHALL BE MADE IN ACCORDANCE WITH THE LATEST STANDARD OF THE IEEE AND THE NATIONAL ELECTRICAL CODE.
10. MINIMUM CONDUCTOR SIZE SHALL BE #12, 600V INSULATION. MINIMUM SIZE CONDUIT SHALL BE 3/4" ELECTRICAL METALLIC TUBING (EMT) FOR INTERIOR USE, 3/4" RIGID ALUMINUM FOR EXTERIOR USE ABOVE GRADE AND 1" SCHEDULE 40 PVC, BURIED A MINIMUM OF 18" FOR NON-VEHICULAR TRAFFIC AREAS, FOR CONDUITS BELOW GRADE. EMT SHALL BE USED WITH METAL STUD CONSTRUCTION AND ALL ASSEMBLY OCCUPANCIES. 6 FT LENGTH MC CABLE IS ALLOWED ABOVE DROPPED CEILING. INTERIOR FITTINGS SHALL BE CAST WHERE EXPOSED ON WALLS, AND EXTERIOR FITTINGS SHALL BE CAST BOXES WITH NEMA 3R COVER(S).
11. CONTRACTOR SHALL INSTALL WIRING AND OTHER CIRCUIT COMPONENTS TO MATCH EQUIPMENT ACTUALLY INSTALLED.
12. ALL 120V RUNS LONGER THAN 60 FEET SHALL BE #10 AWG AND 277V RUNS LONGER THAN 150 FEET SHALL BE #10 AWG UNLESS NOTED OTHERWISE.
13. INSTALL GROUND FAULT RECEPTACLES AT RECEPTACLE LOCATIONS WITHIN 5' OF SINKS OR LAVATORIES, AND AT EXTERIOR LOCATIONS. EXTERIOR RECEPTACLES SHALL ALSO BE WATERPROOF. ALL RECEPTACLES IN A KITCHEN AREA SHALL HAVE GROUND FAULT PROTECTION.
14. BONDING AND GROUNDING SHALL BE IN ACCORDANCE WITH NFPA 70:250-65, NFPA 250-23, 250-11 & 250-12.
15. GROUND NEUTRAL IN ACCORDANCE WITH NFPA 70:250-23b.
16. FUSES SHALL BE ITT CLASS K5, 250 VOLT, 200 000 AMP INTERRUPTING CAP.
17. PROVIDE SERVICES OF A FIRE/SMOKE DETECTION AND ALARM COMPANY TO DESIGN AND INSTALL ALARM SYSTEM TO MEET REQUIREMENTS OF THE STATE FIRE MARSHAL AND THE FIRE DISTRICT.
18. EXTERIOR LIGHTING SHALL BE SHADED OR INWARDLY DIRECTED IN SUCH A MANNER SO THAT NO DIRECT LIGHTING OR GLARE IS CAST BEYOND THE PROPERTY LINE. THE INTENSITY OF SUCH LIGHTING SHALL NOT EXCEED ONE FOOT CANDLE AS MEASURED AT THE ABUTTING PROPERTY LINE.
19. ALL ELECTRICAL, MECHANICAL AND PLUMBING PENETRATING FIRE PARTITIONS SHALL BE FIRE CALKED. (PENETRATIONS THROUGH RATED CONSTRUCTION SHALL BE SEALED WITH A MATERIAL CAPABLE OF PREVENTING THE PASSAGE OF FLAMES AND HOT GASES WHEN TESTED IN ACCORDANCE WITH ASTM-E814.)
20. VERIFY ELECTRICAL CONNECTIONS PER MANUFACTURER'S RECOMMENDATIONS.

LEGEND

- 15 AMP - 120 VOLT, DUPLEX CONVENIENCE OUTLET, MOUNTED AT 18" A.F.F., UNLESS NOTED OTHERWISE.
- 15 AMP - 120 VOLT, GROUND FAULT DUPLEX CONVENIENCE OUTLET, MOUNTED AT 18" A.F.F., UNLESS NOTED OTHERWISE.
- 15 AMP - 120 VOLT, QUADRAPLEX (2 DUPLEX) CONVENIENCE OUTLETS, MOUNTED AT 18" A.F.F., UNLESS NOTED OTHERWISE.
- 15 AMP - 120 VOLT, DUPLEX CONVENIENCE OUTLET, "FLOOR" MOUNTED.
- 15 AMP - 120 VOLT, QUADRAPLEX (2 DUPLEX) CONVENIENCE OUTLETS, "FLOOR" MOUNTED.
- 15 AMP - 120 VOLT, GROUND FAULT DUPLEX CONVENIENCE OUTLET, WITH WEATHERPROOF COVER PLATE, MOUNTED AT 18" A.F.F., UNLESS NOTED OTHERWISE.
- 250 VOLT, SINGLE OUTLET, MOUNTED AT 18" A.F.F., UNLESS NOTED OTHERWISE. COORDINATE AMPERAGE AND PLUG CONFIGURATION WITH EQUIPMENT BEING SERVED.
- DIAL VOICE/DATA OUTLET, MOUNTED AT 18" A.F.F., UNLESS NOTED OTHERWISE.
- DATA OUTLET, MOUNTED AT 18" A.F.F., UNLESS NOTED OTHERWISE.
- COMM. TELEVISION OUTLET, MOUNTED AT 18" A.F.F., UNLESS NOTED OTHERWISE.
- ELECTRICAL DISCONNECT SWITCH, SIZED, CIRCUITED, AND MOUNTED PER CODE.
- ELECTRICAL PANEL, SIZED, CIRCUITED, AND MOUNTED PER CODE.
- ELECTRIC METER, MOUNTED PER CODE.

DAMMON
ENGINEERING, INC.
 LOUISIANA & MISSISSIPPI
 Chief Engineer: Brian Mistch, PE
 554 Old Spanish Trail
 Slidell, LA 70458
 www.dammonengineering.com
 info@dammonengineering.com
 PH: 985.649.5832

#	DESCRIPTION	DATE	REVISIONS

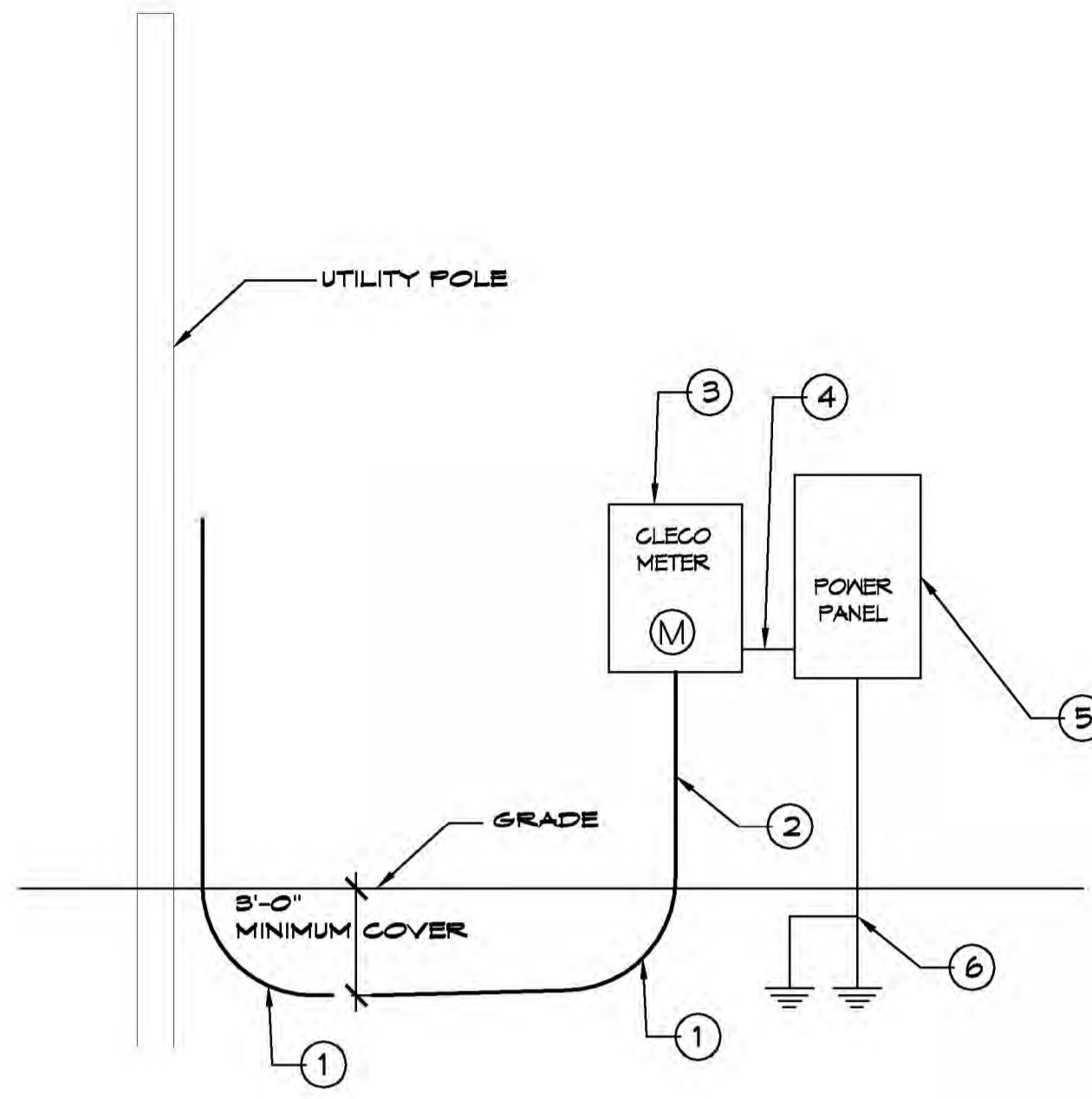
SEAL:

 Brian Mistch

NEW OFFICE WAREHOUSE
ZEISLER & TROMBLY
ENGINEERS & ARCHITECTS
 L.A. HWY 1085 DEER CROSS DRIVE
 MADISONVILLE, LA 70447
 JOB NO: 2893 DATE: 9-26-2019
 DRAWN BY: C&D CHECKED BY: BAW

SHEET TITLE:
POWER PLAN
 DRAWING NUMBER:
E101
 SHEET No: 5 of 8

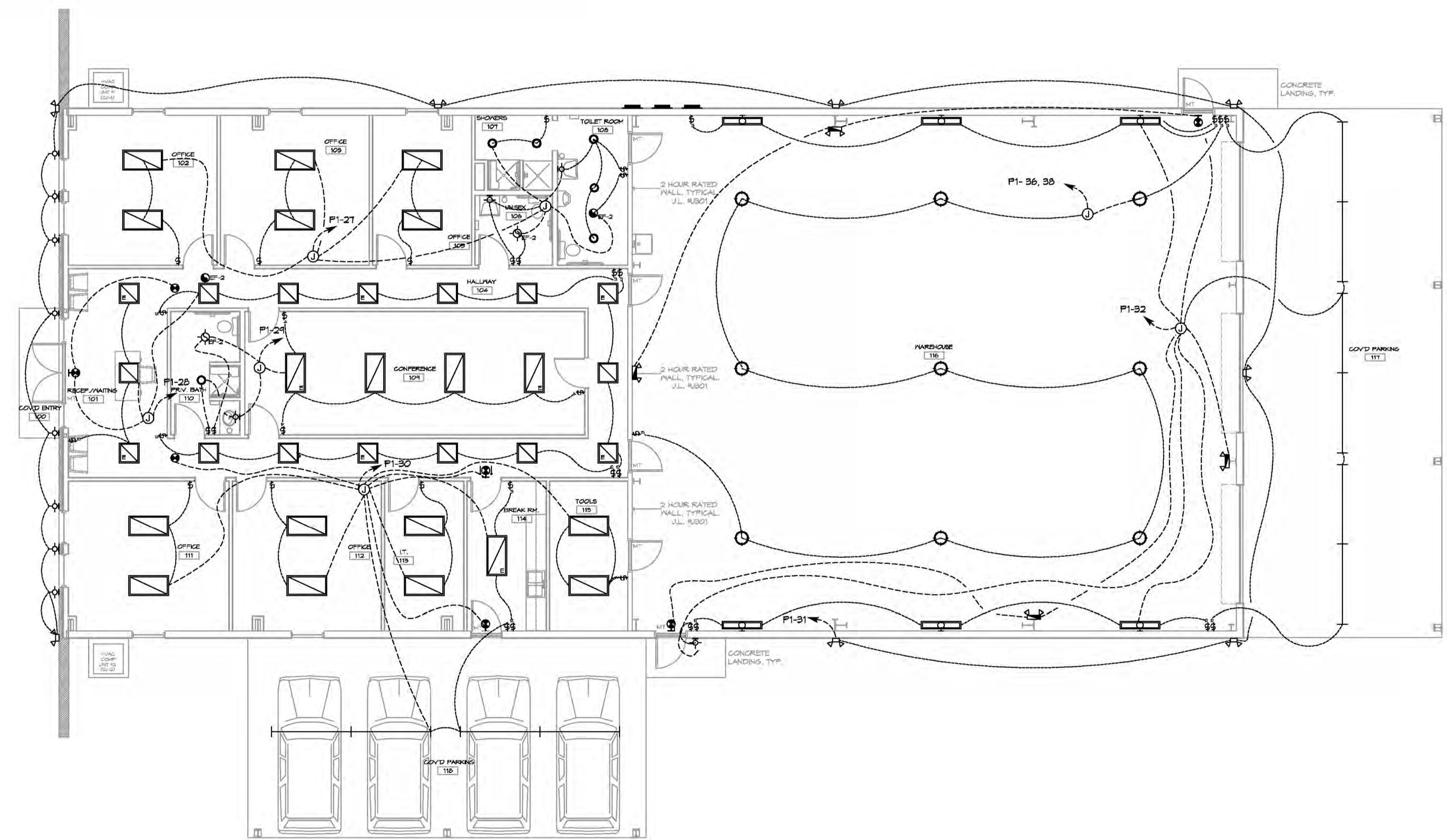
PANEL SCHEDULE											
PANEL #1		PANEL #1		VOLTAGE:		120/240V, 3Ø, 4W, 3Ø, 4W		ENCLOSURE:		PLUMB MOUNTED, NEMA 1 FINISHED, V-REGULATED, 6"ND BRK, 328A 1/2, 68ALC	
LOCATION:		OUTSIDE		FEEDER SOURCE:		UTILITY COMPANY					
QTY	THHN WIRE SIZE	LOAD DESCRIPTION	BREAKER	LOAD (KVA)	AD	BO	LOAD (KVA)	BREAKER	LOAD DESCRIPTION	THHN WIRE SIZE	QTY
1	#10	25 TON CU-1	30 2	1.3			2.4	2	25 TON AH-1, 25 ØK	#10	2
3	#10	5 TON CU-2	30 2	1.3			4.1	2	5 TON AH-2, 4.8 ØK	#8	8
9	#10	HOT WATER HEATER	30 2	2.3			1.1	2	SPRINKLER PUMP/UNIT STATION	#10	10
11	#12	ROOM 111 OUTLETS	30 1	1.3			1.4	1	ROOMS 112 & 113 OUTLETS	#12	14
15	#12	ROOMS 114 & 115 OUTLETS	30 1	1.3			1.4	1	ROOM 115 & HALLWAY OUTLETS	#12	16
11	#12	ROOM 101 OUTLETS	30 1	1.3			1.4	1	ROOMS 101, 110 & HALLWAY 104 OUTLETS	#12	18
14	#12	ROOM 102 OUTLETS	30 1	1.4			1.4	1	ROOM 103 & 105 OUTLETS	#7	20
21	#12	ROOM 105 & HALLWAY 116 OUTLETS	30 1	1.4			1.4	1	WAREHOUSE 116 OUTLETS	#12	22
23	#12	WAREHOUSE 116 OUTLETS	30 1	1.4			1.1	1	WAREHOUSE 116 OUTLETS	#12	24
25	#12	WAREHOUSE 116 OUTLETS	30 1	1.1			1.1	1	OFFICE OUTLETS	#12	26
21	#12	RW 101, 102, 103, 106, 108, 109, 105 LBTS	30 1	0.7			0.4	1	ENTRANCE 101 & HALLWAY 104 LBTS	#12	28
24	#12	RW 101 & 110 LBTS	30 1	0.4			0.4	1	RW 111, 112, 113, 114, 115 & 113 LBTS	#12	30
31	#12	OUTSIDE LIGHTS	30 1	0.3			0.4	1	RW 116 STRIP LBTS, 111 LBTS	#12	32
33	-	SPARE	30 1	-			-	1	SPARE	-	34
35	-	SPARE	30 1	-			-	2	WAREHOUSE 104 BACK LIGHTS	#12	36
37	-	SPARE	30 1	-			-	10	WAREHOUSE 104 BACK LIGHTS	#12	38
34	#10	WAREHOUSE 116 240V OUTLET	30 2	2.3			2.3	2	OUTSIDE 240V OUTLET	#10	40
41	#10	WAREHOUSE 116 240V OUTLET	30 2	2.3			2.3	2	OUTSIDE 240V OUTLET	#10	42
SOLID NEUTRAL NEUTRAL WIRE (N)				TOTAL CONNECTED LOAD = 65.1 kW				GROUND BUS			
				AD = 35.9 kW		BO = 9.2 kW					



- ONE LINE NOTES:**
- 36" LONG SWEEP ELBOW
 - PROVIDE TWO (2) 4" SCHEDULE 40 PVC CONDUIT BELOW GRADE AND SCH 80 PVC CONDUIT ABOVE GRADE WITH SUITABLE FISH WIRE.
 - 120/240V 1Ø 225amp METER PAN.
 - 3-250 MCM THHN, 1-#2 CU GND, 2 1/2" C
 - 120/240V 1Ø 225amp PANELBOARD WITH MAIN BREAKER.
 - 2-3/4" x 10' CU CLAD GND ROD, #2 CU GND WIRE. PROTECT IN PVC PIPE. CONNECT TO METAL BLDG, COLD WATER SUPPLY & GAS LINE. CAD WELD ALL CONNECTIONS.

GENERAL LIGHTING NOTES

- ALL WORK SHALL COMPLY WITH APPLICABLE NATIONAL, STATE, AND LOCAL CODES, RULES, REGULATIONS, AND REQUIREMENTS OF THE SERVICE UTILITY COMPANY.
- GENERAL CONTRACTOR SHALL NOTIFY THE ARCHITECT IMMEDIATELY IF ANY CONFLICTS OCCUR BETWEEN LIGHTING AND ANY OTHER TRADE. DO NOT PROCEED WITH INSTALLATION IN THAT AREA UNTIL CONFLICT HAS BEEN RESOLVED TO THE SATISFACTION OF THE ARCHITECT AND ENGINEER.
- REFER TO ARCHITECTURAL DRAWINGS FOR EXACT LOCATION AND MOUNTING INSTRUCTIONS FOR ALL LIGHT FIXTURES. NOTIFY THE ARCHITECT AND ENGINEER OF ANY DISCREPANCIES BETWEEN THESE PLANS AND THE ARCHITECTURAL PLANS RELATING TO QUANTITY, TYPE AND LOCATION OF DEVICES AND/OR FIXTURES.
- WHEN SPECIFIC LIGHT FIXTURE HAS BEEN SPECIFIED IN THE FIXTURE SCHEDULE, ELECTRICAL CONTRACTOR SHALL PROVIDE COMPLETE ASSEMBLY INCLUSIVE ALL PARTS AND HARDWARE TO INSURE PROPER FUNCTIONING FIXTURE.
- ALL CONDUCTORS SHALL BE A MINIMUM OF #12 AWG UNLESS NOTED OTHERWISE.
- ALL 120V RUNS LONGER THAN 60 FEET SHALL BE #10 AWG AND 277V RUNS LONGER THAN 150 FEET SHALL BE #10 AWG UNLESS NOTED OTHERWISE.
- ALL CONDUCTORS SHALL BE COPPER.
- WHERE CONDUCTOR SIZES ARE NOTED ON DRAWINGS, THAT WIRE SIZE SHALL BE THROUGH THE ENTIRE RUN UNLESS OTHERWISE NOTED.
- MOUNTED LIGHT SWITCHES 48" AFF UNLESS NOTED OTHERWISE ON ARCHITECTURAL DRAWINGS.
- WHERE MORE THAN ONE SWITCH OCCURS IN THE SAME LOCATION, THEY SHALL BE INSTALLED IN A GANG TYPE BOX UNDER ONE COVER PLATE. ALL GANGED SWITCHES SHALL HAVE A COMMON SEAMLESS FACEPLATE. EACH MULTI-GANGED BOX SHALL BE NO MORE THAN SIX (6) SWITCHES WIDE. WHERE MORE THAN SIX (6) SWITCHES ARE SHOWN AT ONE (1) LOCATION, ADDITIONAL MULTI-GANGED BOXES SHALL BE STACKED VERTICALLY AND THE WIDTH OF THE MULTI-GANGS SHALL BE AS EVEN AS POSSIBLE.
- EACH DIMMER SWITCH SHALL HAVE A WATTAGE RATING 25% HIGHER THAN THE TOTAL WATTAGE OF ALL LIGHTS TO BE CONTROLLED BY THE DIMMER. DIMMER SIZES 600, 1000, 1500, AND 2000 WATTS, LUTRON NOVA T-STAR. WHERE SWITCHES ARE GANGED WITH DIMMERS, THE SWITCHES SHALL ALSO BE LUTRON NOVA T-STAR. FLUORESCENT AND LOW VOLTAGE DIMMERS SHALL BE LUTRON NOVA T-STAR.
- WHERE FLUORESCENT FIXTURES ARE SHOWN TO BE DIMMED, THE FIXTURES SHALL HAVE DIMMING TYPE BALLASTS WHICH ARE COMPATIBLE WITH THE SPECIFIED DIMMERS.
- WHERE LED FIXTURES/LAMPS ARE SHOWN TO BE DIMMED, THE DIMMER SHALL BE COMPATIBLE WITH THE FIXTURE/LAMP SPECIFIED OR PROVIDED.
- ALL EMERGENCY EXIT LIGHT FIXTURES SHALL HAVE 90 MINUTE BATTERY BACKUP WITH INTEGRAL TEST BUTTON AND SHALL BURN CONTINUOUSLY.
- ALL FLUORESCENT FIXTURES THAT UTILIZE DOUBLE-ENDED LAMPS AND CONTAIN BALLASTS SHALL BE PROVIDED WITH A DISCONNECTING MEANS IN ACCORDANCE WITH NEC 410.136.



16 LIGHTING PLAN
SCALE: 1/8"=1'-0"

LEGEND

- RECESSED 2' x 4' LED LIGHT FIXTURE, TO BE SELECTED. ('E' DENOTES FIXTURE ON EMERGENCY LIGHTING CIRCUIT)
- RECESSED 2' x 2' LED LIGHT FIXTURE, TO BE SELECTED. ('E' DENOTES FIXTURE ON EMERGENCY LIGHTING CIRCUIT)
- RECESSED LED DOWN LIGHT FIXTURE, TO BE SELECTED. ('E' DENOTES FIXTURE ON EMERGENCY LIGHTING CIRCUIT)
- RECESSED VENT/LIGHT FIXTURE, TO BE SELECTED.
- RECESSED EXHAUST FAN, TO BE SELECTED.
- CEILING MOUNTED LED HIGH-BAY LIGHT FIXTURE, TO BE SELECTED.
- ADJUSTABLE WALL WASHER LIGHT FIXTURE, TO BE SELECTED.
- 8' L CEILING MOUNTED LED STRIP LIGHT FIXTURE, TO BE SELECTED.
- WALL MOUNTED LED LIGHT FIXTURE, TO BE SELECTED.
- WALL MOUNTED SECURITY LIGHT FIXTURE, TO BE SELECTED.
- SINGLE POLE WALL SWITCH, MOUNTED AT 48" A.F.F., UNLESS NOTED OTHERWISE.
- THREE WAY WALL SWITCH, MOUNTED AT 48" A.F.F., UNLESS NOTED OTHERWISE.
- FOUR WAY WALL SWITCH, MOUNTED AT 48" A.F.F., UNLESS NOTED OTHERWISE.
- WALL OR CEILING MOUNTED TEXT LIGHT, WITH BATTERY BACKUP ON EMERGENCY CIRCUIT, TO BE SELECTED.
- WALL MOUNTED EMERGENCY LIGHT, WITH BATTERY BACKUP ON EMERGENCY CIRCUIT, TO BE SELECTED.
- ELECTRICAL DISCONNECT SWITCH, SIZED, CIRCUITED, AND MOUNTED PER CODE.
- ELECTRICAL PANEL, SIZED, CIRCUITED, AND MOUNTED PER CODE.
- ELECTRIC METER, MOUNTED PER CODE.
- JUNCTION BOX

DAMMON ENGINEERING, INC.
LOUISIANA & MISSISSIPPI

Chief Engineer: Brian Mitchell, PE
www.dammonengineering.com
info@dammonengineering.com
554 Old Spanish Trail
Starr, LA 70588
PH: 985.649.5832

REVISIONS	DATE	DESCRIPTION

SEAL:

NEW OFFICE WAREHOUSE

ZEIGLER & TIMBER, CO.

LA HWY 1035 DEER CROSS DRIVE
MADISONVILLE, LA 70447

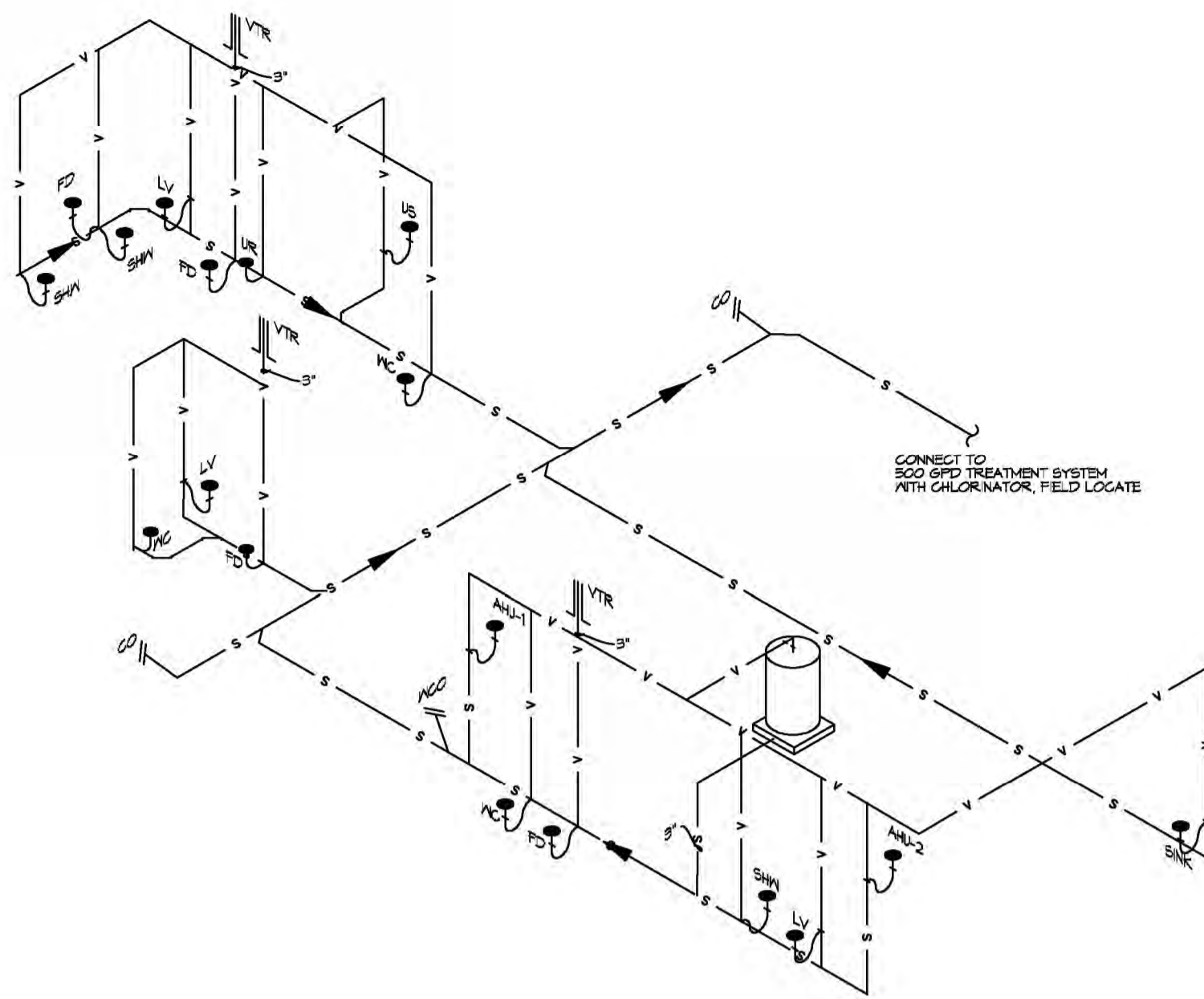
JOB No: 23939 DATE: 9-26-2019
DRAWN BY: BMM CHECKED BY: CJD

SHEET TITLE:
LIGHTING PLAN

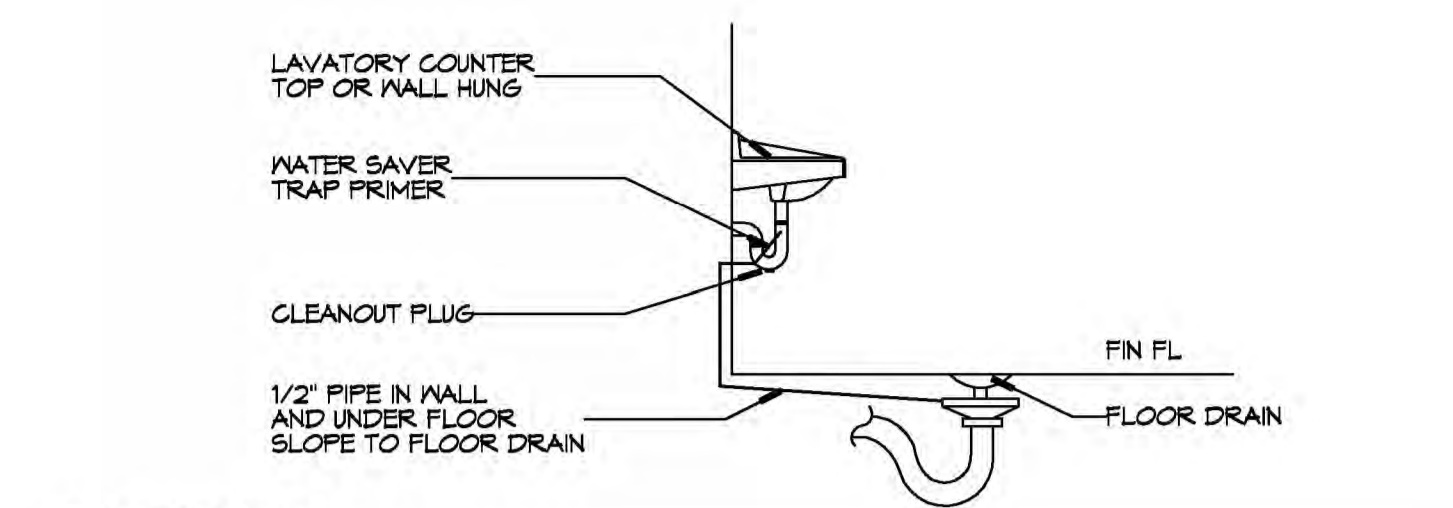
DRAWING NUMBER:
E102

SHEET No: 6 of 6

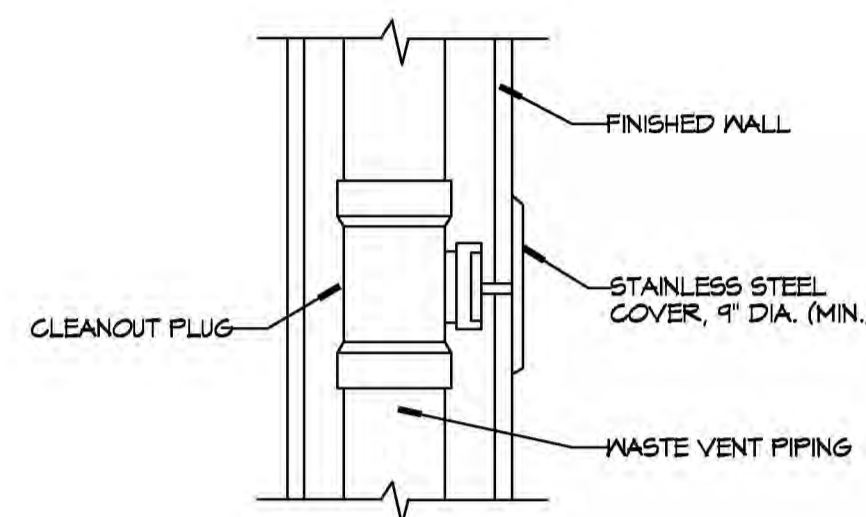
FILE NAME: J:_Office\NewOffice\2019 - 2020 - New Office Warehouse\2019 - 2020 - Plumbing\Plumbing - P101.dwg
 PLOT DATE: 9/26/2019
 PLOT TIME: 10:58:28 AM
 PLOT BY: B.M.



20 PLUMBING RISER DIAGRAM
SCALE: NTS



21 TYPICAL DETAILS
SCALE: NTS
MISCELLANEOUS PLUMBING



22 TYPICAL DETAILS
SCALE: NTS
MISCELLANEOUS PLUMBING

GENERAL PLUMBING NOTES

- PLUMBING LINES SHOWN ARE DRAWN DIAGRAMMATIC IN NATURE AND REPRESENT CONCEPTUAL ROUTING ONLY. CONTRACTOR IS RESPONSIBLE FOR FIELD VERIFICATION OF ALL ACTUAL CONDITIONS.
- PROVIDE ALL LABOR, MATERIAL, TRANSPORTATION, SUPERVISION, CLEAN-UP, SERVICES, AND EQUIPMENT FOR A COMPLETE OPERATING SYSTEM. THE SYSTEM SHALL INCLUDE HOT AND COLD WATER PIPING, SEWER AND VENT PIPING, INSULATION, WATER HEATER, HANGERS, VALVES, SUPPORTS WITHOUT ANY RESTRICTIONS TO VOLUME, CUT AND PATCH AS REQUIRED TO INSTALL PIPES.
- ALL WORK AND MATERIAL SHALL CONFORM STRICTLY TO THE LATEST LOCAL, CITY, PARISH, STATE AND NATIONAL GOVERNING CODES, MUST MEET LA STATE PLUMBING CODE 2019 REQUIREMENTS.
- CONTRACTOR IS TO FIELD VERIFY ALL EXISTING UTILITY LOCATIONS, ELEVATIONS AND SIZES PRIOR TO COMMENCING ANY WORK. CONTRACTOR SHALL PAY NECESSARY FEES FOR THE UTILITIES CONNECTIONS.
- CONTRACTOR IS RESPONSIBLE TO VERIFY THE EXISTING INVERTS AND SET NEW INVERTS OF SEWERAGE AND DRAINAGE PIPES.
- SEWERAGE LINES 3-INCH AND SMALLER SHALL BE SLOPED 1/4" PER FOOT AND LINES 4-INCH AND LARGER SHALL BE 1/8" PER FOOT.
- TEST ALL PIPING AT REQUIRED PRESSURE.
- ALL PLUMBING SHALL BE CLOSELY COORDINATED WITH STRUCTURAL, MECHANICAL SYSTEM AND ELECTRICAL SYSTEMS TO INSURE NO TRADES WILL CONFLICT WITH EACH OTHER.
- DO NOT SCALE DRAWINGS. SEE ARCHITECTURAL DRAWINGS FOR EXACT LOCATIONS OF DOORS, WINDOWS, WALLS, FIXTURES, ETC.
- ALL WATER MAINS AND PIPING NOT SHOWN FOR CLARITY, ALL LOCATIONS FIELD VERIFIED.
- DOMESTIC HOT AND COLD WATER PIPING AND FITTINGS UNDER SLAB SHALL BE ASTM B88 COPPER WATER TUBE, TYPE K, SOFT ANNEALED. NO JOINTS SHALL BE ALLOWED UNDER THE SLAB.
- DOMESTIC WATER PIPING AND FITTINGS ABOVE THE SLAB SHALL BE ASTM B88 COPPER WATER TUBE, TYPE K, HARD DRAWN WITH COPPER PRESSURE TYPE FITTINGS, ANSI B16.22. THE JOINTS SHALL BE SOLDERED TYPE USING ASTM B32, ALLOY GRADE #5A (#5-S) SOLDER.
- SOIL, WASTE, VENT PIPING AND FITTINGS ABOVE THE SLAB SHALL BE SERVICE WEIGHT CAST IRON PIPE WITH BELL AND SPIGOT ENDS AND ONE PIECE NEOPRENE INSERT TYPE GASKET. USE PVC SCHEDULE 40 OR ABS DWV PIPES AND FITTINGS WHERE PERMITTED BY CODE.
- ALL WATER PIPING AND FITTINGS ABOVE THE FLOOR SHALL BE INSULATED WITH 1/2" THICK FIBERGLASS INSULATION AND JACKET.
- ALL ELECTRICAL, MECHANICAL AND PLUMBING ELEMENTS PENETRATING FIRE PARTITIONS SHALL BE FIRE CAULKED. (PENETRATIONS THROUGH RATED CONSTRUCTION SHALL BE SEALED WITH A MATERIAL CAPABLE OF PREVENTING THE PASSAGE OF FLAMES AND HOT GASES WHEN TESTED IN ACCORDANCE WITH ASTM-E814.)
- SEE ROOF PLAN FOR PLUMBING ROOF PENETRATIONS. ROUTE VENT PIPES IN ATTIC AS NECESSARY.
- ALL VENTS THROUGH ROOF (VTR) SHALL BE LOCATED A MINIMUM OF 10'-0" FROM ANY MECHANICAL OR NATURAL AIR INTAKE.

PLUMBING ABBREVIATIONS

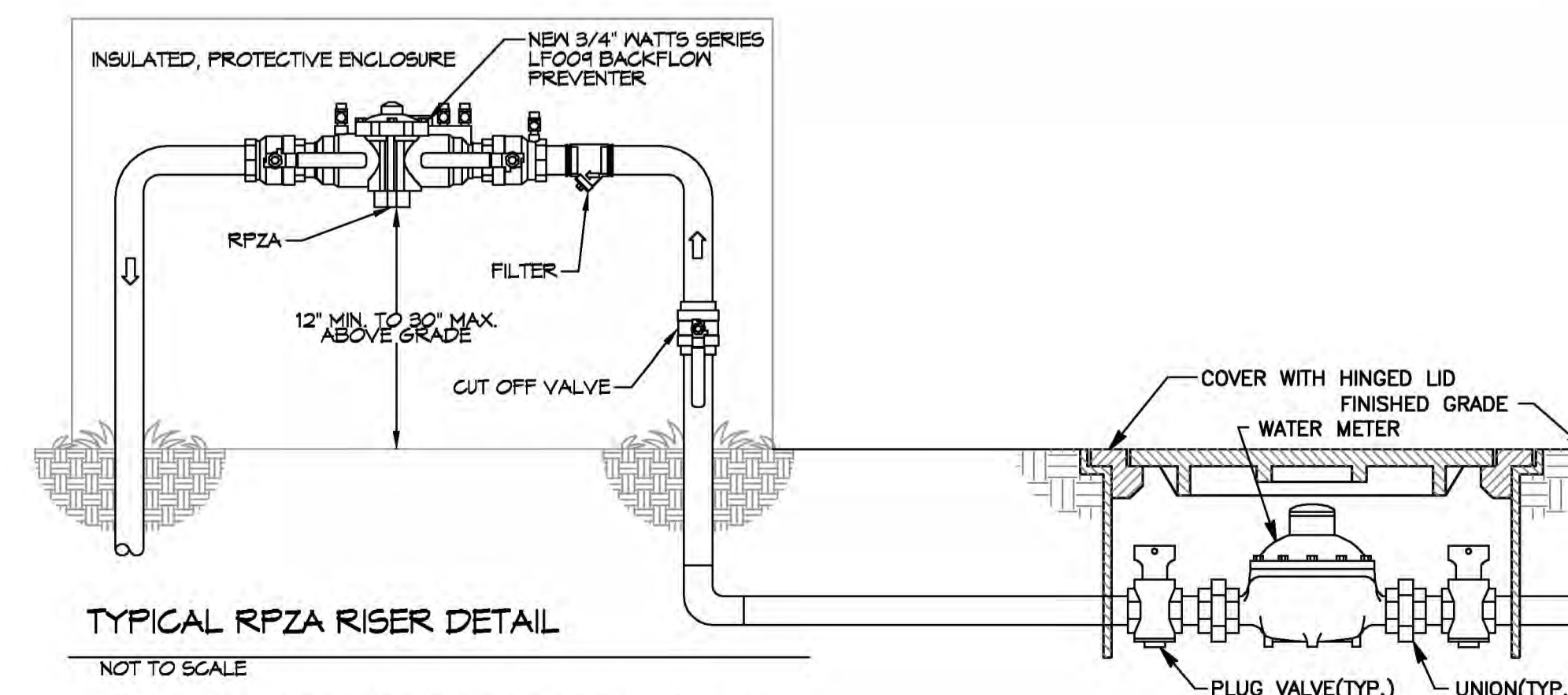
US	UTILITY SINK	MCO	WALL CLEAN OUT
LAV	LAVATORY		
WC	WATER CLOSET		
UR	URINAL		
AHU-#	AIR HANDLING UNIT		
FD	FLOOR DRAIN		
SHA	SHOWER		

LEGEND

SYMBOL	DESCRIPTION
—S—S—	SANITARY SEWER
—V—V—	VENT PIPE
—FD	FLOOR DRAIN
—MCO	LINE CLEAN OUT
—MCO	WALL CLEAN OUT

PLUMBING FIXTURE SCHEDULE

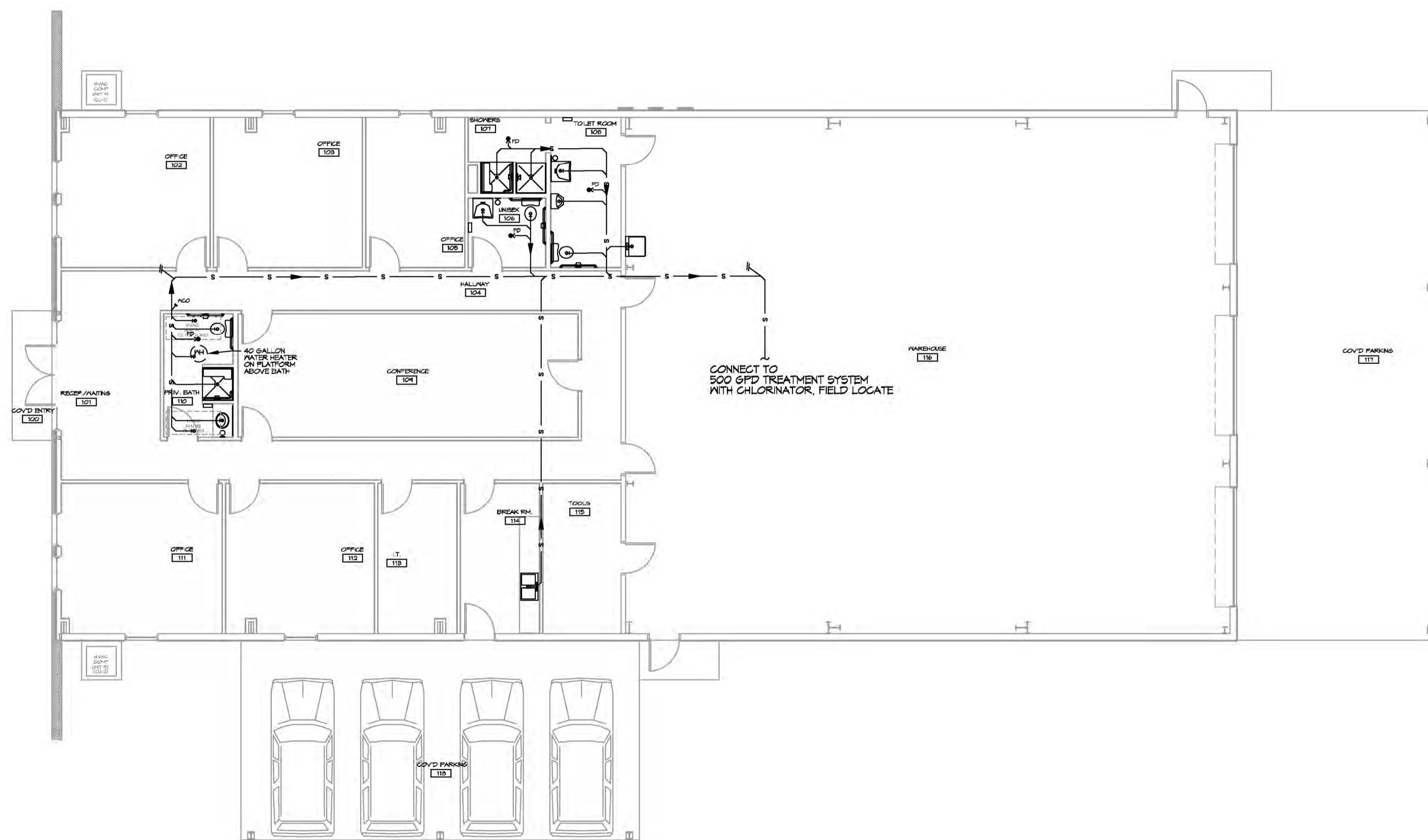
ITEM	DESCRIPTION	SOIL OR WASTE	VENT	COLD WATER	HOT WATER	
WC	WATER CLOSET	4"	3"	1"	—	FLUSH VALVE; MATCH EXISTING
LAV	LAVATORY	1-1/2"	2"	1/2"	1/2"	MATCH EXISTING
US	UTILITY SINK	3"	2"	1/2"	1/2"	FIAT MODEL #M8B 2424 OR EQUAL, 24"X24"X10" FIBERGLASS BASIN WITH MODEL #830-AA FAUCET WITH VACUUM BREAKER AND PAIL HOOK, AND MODEL #884-CG OR EQUAL MOP HANGER.
FD	FLOOR DRAIN	3"	2"	—	—	COATED CAST IRON WITH ADJUSTABLE NICKEL BRONZE GRATE, TRAP PRIMER CONNECTION AND DEEP SEAL TRAP, EQUAL TO JAY R. SMITH 2010-B-P.
FCO	FLOOR CLEAN OUT	—	—	—	—	MADE #1-6004-Y OR EQUAL, CAST IRON W/ADJUSTABLE HOUSING, ROUND HEAVY CAST IRON VANDAL PROOF TOP.
MCO	WALL CLEAN OUT	—	—	—	—	MADE #N-8453-R6 OR EQUAL, WITH BRASS PLUG AND ROUND STAINLESS STEEL SECURED ACCESS COVER.



TYPICAL RPZA RISER DETAIL

NOT TO SCALE

NOTE: ALL CONNECTIONS TO POTABLE WATER SYSTEMS SHALL BE PROTECTED WITH AN APPROVED BACK-FLOW PREVENTER.



19 PLUMBING PLAN
SCALE: 3/8"=1'-0"

DAMMON ENGINEERING, INC.
 LOUISIANA & MISSISSIPPI
 Chief Engineer: Brian Mestich, PE
 594 Old Spanish Trail
 Slidell, LA 70458
 www.dammonengineering.com
 info@dammonengineering.com
 PH: 985.649.9832

REVISIONS	DATE	DESCRIPTION

SEAL:

NEW OFFICE WAREHOUSE
ZEIGLER, TROTT & ZEIGLER, CO.
 L.A. HWY 1095 DEER CROSS DRIVE
 MADISONVILLE, LA 70447
 JOB No: 2383 DATE: 9-26-2019
 DRAWN BY: B.M. CHECKED BY: B.M.

SHEET TITLE:
PLUMBING PLAN
 DRAWING NUMBER:
P101
 SHEET No: 6 of 6