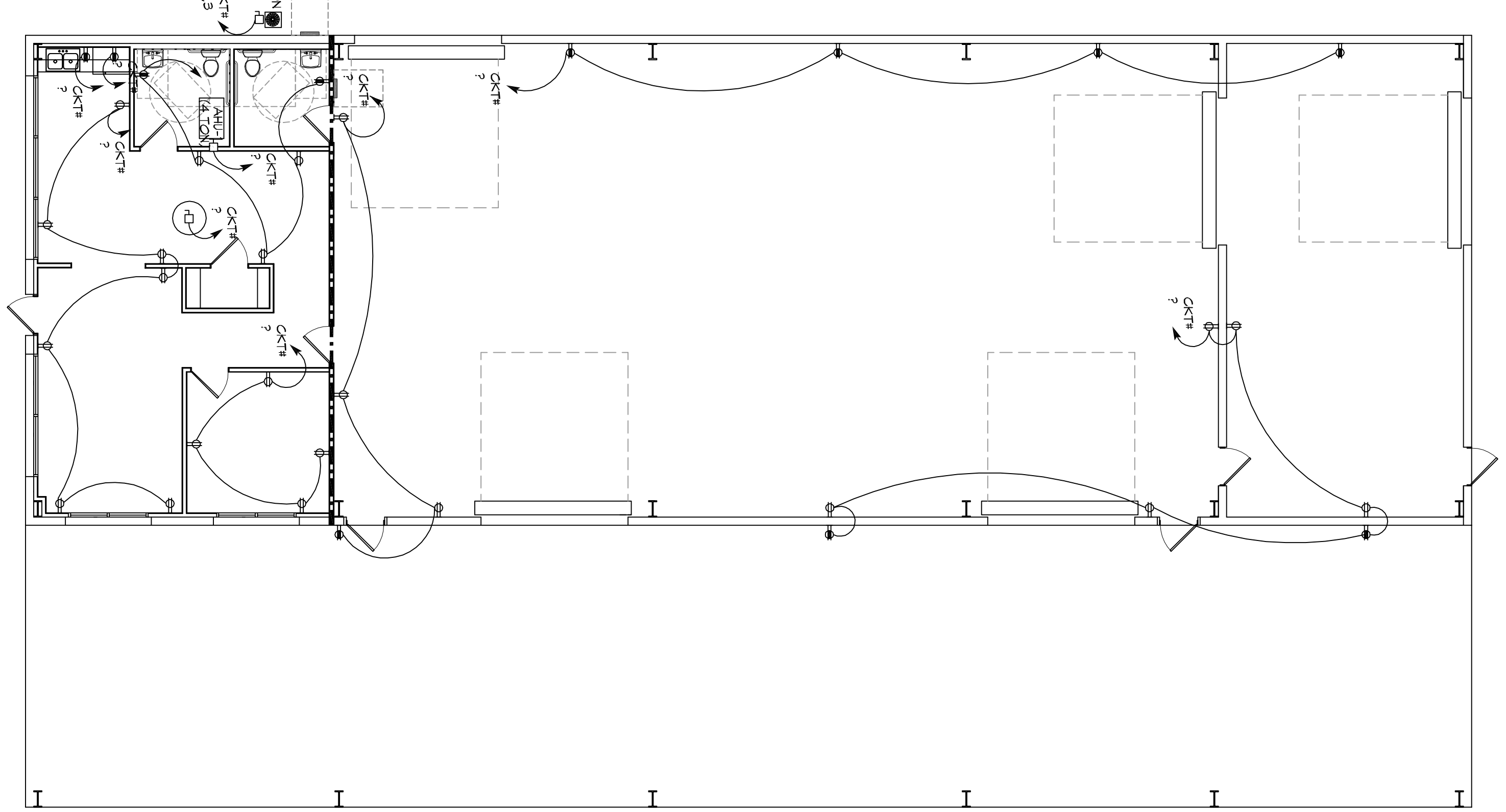
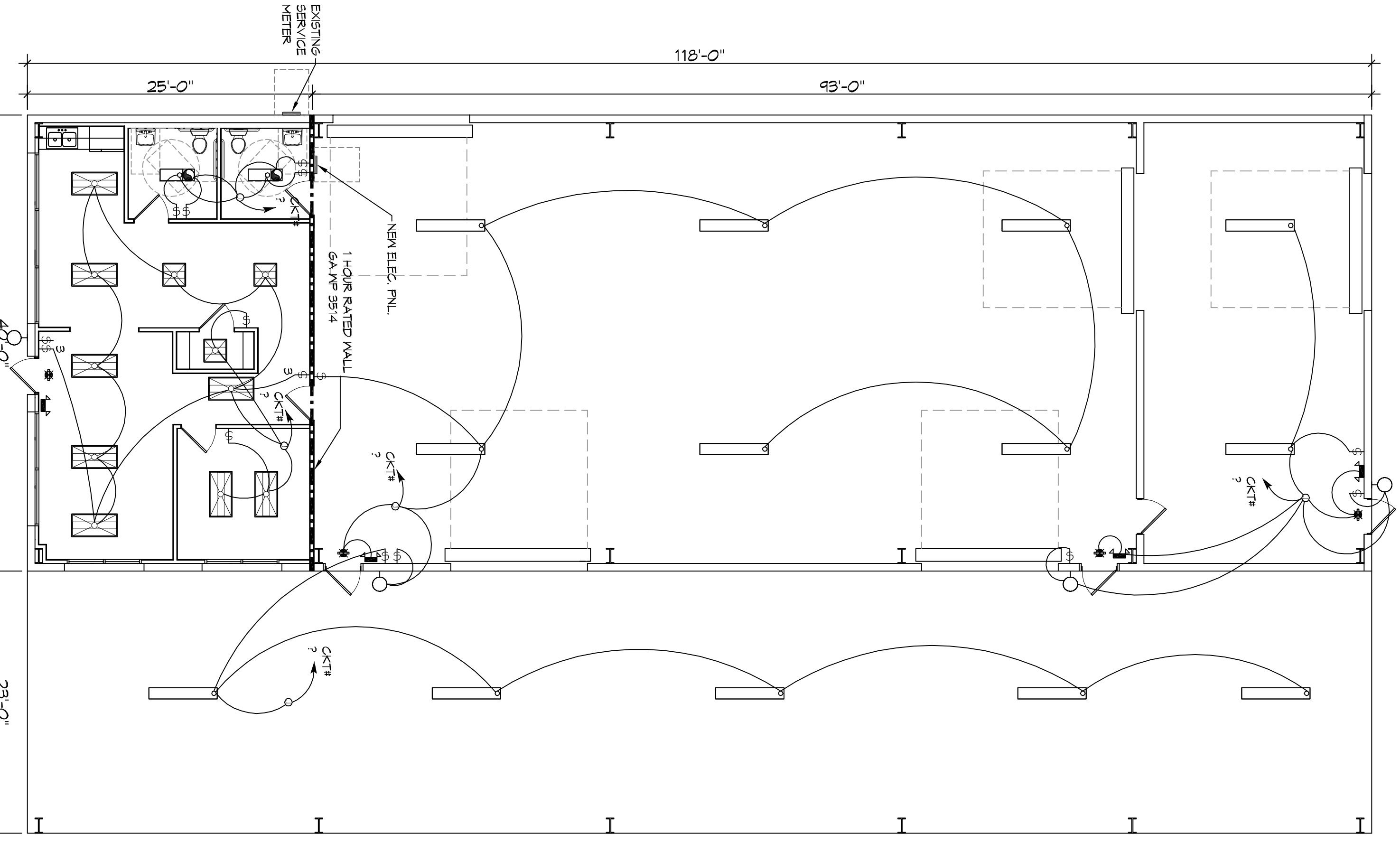


### LEGEND

	EMERGENCY LIGHT FIXTURE (2x)
	EXIT LIGHT FIXTURE - WALL MOUNTED (10x)
	LED EXTERIOR WALL MOUNTED LIGHT FIXTURE WITH 90 MIN. BACK-UP (75x)
	2x4 SURFACE MOUNTED FLUORESCENT OR LED LIGHTING, 9 LAMPS PER FIXTURE, 2850 LUMENS PER LAMP
	1x2 SURFACE MOUNTED FLUORESCENT OR LED LIGHTING, 3 LAMPS PER LAMP
	1x6 SURFACE MOUNTED FLUORESCENT OR LED LIGHTING, 3 LAMPS PER LAMP
	CIRCUIT HOME RUN
	LIGHT SWITCH, 120V COMMERCIAL GRADE
	LIGHT SWITCH - 3-WAY, 120V
	EXHAUST FAN SEE MECH.
	STANDARD 220V DUPLEX RECEPTACLE, NEMA 5-2 OR 15- AFF (UNLESS OTHERWISE NOTED)
	650 DUPLEX RECEPTACLE
	WEATHER-PROOF 650 DUPLEX RECEPTACLE MOUNTED AT 30" AFF (UNLESS OTHERWISE NOTED)
	JUNCTION BOX
	RIGID DISCONNECT

### LEGEND

	ELECTRIC PANEL BOARD
	LIGHT SWITCH, 120V COMMERCIAL GRADE
	LIGHT SWITCH - 3-WAY, 120V
	EXHAUST FAN SEE MECH.
	STANDARD 220V DUPLEX RECEPTACLE, NEMA 5-2 OR 15- AFF (UNLESS OTHERWISE NOTED)
	650 DUPLEX RECEPTACLE
	WEATHER-PROOF 650 DUPLEX RECEPTACLE MOUNTED AT 30" AFF (UNLESS OTHERWISE NOTED)
	JUNCTION BOX
	RIGID DISCONNECT



**34 FLOOR PLAN - POWER**  
SCALE: 1/8"=1'-0"

**35 FLOOR PLAN - LIGHTING**  
SCALE: 1/8"=1'-0"

### PANEL SCHEDULE

NO.	DESCRIPTION	AMPS	VOLTS	PHASES	TERMINALS	REMARKS
1	120/208V 100 AMP SERVICE	100	120/208	3	4	MAIN SERVICE PANEL
2	120/208V 40 AMP SERVICE	40	120/208	3	4	REAR OFFICE PANEL
3	120/208V 20 AMP SERVICE	20	120/208	3	4	REAR OFFICE PANEL
4	120/208V 20 AMP SERVICE	20	120/208	3	4	REAR OFFICE PANEL
5	120/208V 20 AMP SERVICE	20	120/208	3	4	REAR OFFICE PANEL
6	120/208V 20 AMP SERVICE	20	120/208	3	4	REAR OFFICE PANEL
7	120/208V 20 AMP SERVICE	20	120/208	3	4	REAR OFFICE PANEL
8	120/208V 20 AMP SERVICE	20	120/208	3	4	REAR OFFICE PANEL
9	120/208V 20 AMP SERVICE	20	120/208	3	4	REAR OFFICE PANEL
10	120/208V 20 AMP SERVICE	20	120/208	3	4	REAR OFFICE PANEL
11	120/208V 20 AMP SERVICE	20	120/208	3	4	REAR OFFICE PANEL
12	120/208V 20 AMP SERVICE	20	120/208	3	4	REAR OFFICE PANEL
13	120/208V 20 AMP SERVICE	20	120/208	3	4	REAR OFFICE PANEL
14	120/208V 20 AMP SERVICE	20	120/208	3	4	REAR OFFICE PANEL
15	120/208V 20 AMP SERVICE	20	120/208	3	4	REAR OFFICE PANEL
16	120/208V 20 AMP SERVICE	20	120/208	3	4	REAR OFFICE PANEL
17	120/208V 20 AMP SERVICE	20	120/208	3	4	REAR OFFICE PANEL
18	120/208V 20 AMP SERVICE	20	120/208	3	4	REAR OFFICE PANEL
19	120/208V 20 AMP SERVICE	20	120/208	3	4	REAR OFFICE PANEL
20	120/208V 20 AMP SERVICE	20	120/208	3	4	REAR OFFICE PANEL
21	120/208V 20 AMP SERVICE	20	120/208	3	4	REAR OFFICE PANEL
22	120/208V 20 AMP SERVICE	20	120/208	3	4	REAR OFFICE PANEL
23	120/208V 20 AMP SERVICE	20	120/208	3	4	REAR OFFICE PANEL
24	120/208V 20 AMP SERVICE	20	120/208	3	4	REAR OFFICE PANEL
25	120/208V 20 AMP SERVICE	20	120/208	3	4	REAR OFFICE PANEL
26	120/208V 20 AMP SERVICE	20	120/208	3	4	REAR OFFICE PANEL
27	120/208V 20 AMP SERVICE	20	120/208	3	4	REAR OFFICE PANEL
28	120/208V 20 AMP SERVICE	20	120/208	3	4	REAR OFFICE PANEL
29	120/208V 20 AMP SERVICE	20	120/208	3	4	REAR OFFICE PANEL
30	120/208V 20 AMP SERVICE	20	120/208	3	4	REAR OFFICE PANEL
31	120/208V 20 AMP SERVICE	20	120/208	3	4	REAR OFFICE PANEL
32	120/208V 20 AMP SERVICE	20	120/208	3	4	REAR OFFICE PANEL
33	120/208V 20 AMP SERVICE	20	120/208	3	4	REAR OFFICE PANEL
34	120/208V 20 AMP SERVICE	20	120/208	3	4	REAR OFFICE PANEL
35	120/208V 20 AMP SERVICE	20	120/208	3	4	REAR OFFICE PANEL
36	120/208V 20 AMP SERVICE	20	120/208	3	4	REAR OFFICE PANEL
37	120/208V 20 AMP SERVICE	20	120/208	3	4	REAR OFFICE PANEL
38	120/208V 20 AMP SERVICE	20	120/208	3	4	REAR OFFICE PANEL
39	120/208V 20 AMP SERVICE	20	120/208	3	4	REAR OFFICE PANEL
40	120/208V 20 AMP SERVICE	20	120/208	3	4	REAR OFFICE PANEL
41	120/208V 20 AMP SERVICE	20	120/208	3	4	REAR OFFICE PANEL
42	120/208V 20 AMP SERVICE	20	120/208	3	4	REAR OFFICE PANEL

NOTE: VERIFY WITH MECHANICAL CONTRACTOR THE NUMBER OF CONNECTIONS REQUIRED.

### GENERAL NOTES

- ALL WORK SHALL CONFORM TO THE LATEST EDITION OF THE NATIONAL ELECTRICAL CODE, THE GOVERNING ELECTRICAL CODE AND ALL OTHER APPLICABLE CODES AND REGULATIONS. THE CONTRACTOR SHALL VERIFY ALL APPLICABLE CODES AND REGULATIONS WITH THE LOCAL AUTHORITIES.
- ALL MATERIALS FURNISHED SHALL BE NEW AND SHALL BE U.L. LISTED.
- THE DRAWINGS INDICATE SIZE AND GENERAL LOCATION OF WORK. SCALE DIMENSIONS SHALL NOT BE USED. THE EXACT LOCATION OF ALL LIGHTING FIXTURES, RECEPTACLES AND TELEPHONE OUTLETS, ETC. SHALL BE DETERMINED BY ACTUAL CONDITIONS IN THE FIELD.
- PRIOR TO BEGINNING WORK, THE CONTRACTOR SHALL VISIT THE JOB SITE AND FAMILIARIZE HIMSELF WITH THE EXISTING CONDITIONS.
- ELECTRICAL CONTRACTOR SHALL COORDINATE HIS WORK WITH OTHER TRADES AND WITH OTHER CONTRACTORS WHOSE WORK MAY AFFECT THIS INSTALLATION.
- ELECTRICAL CONTRACTOR SHALL COORDINATE THE NEARBY ELECTRICAL WORK WITH THE MECHANICAL CONTRACTOR.
- ELECTRICAL CONTRACTOR SHALL INCLUDE IN HIS BID ALL CHARGES AND FEES INCURRED IN MODIFICATIONS.
- ELECTRICAL CONTRACTOR SHALL COORDINATE THE TELEPHONE INSTALLATION WITH THE TELEPHONE COMPANY AND THE GENERAL CONTRACTOR.
- ELECTRICAL CONTRACTOR, BEFORE INSTALLING ANY OF THE WORK, SHALL SEE THAT IT DOES NOT INTERFERE WITH CLEARANCES REQUIRED FOR FINISHED CEILING, HUNG CEILING, PLASTER PARTITIONS, WALLS, ETC. AS SHOWN IN THE ARCHITECTURAL DRAWINGS AND DETAILS. IF ANY WORK IS INSTALLED AND IT LATER DEVELOPS THAT SUCH DETAILS OR DESIGN CANNOT BE FOLLOWED, THE CONTRACTOR AT HIS OWN EXPENSE SHALL MAKE SUCH CHANGES IN THE INSTALLATION OF THE ELECTRICAL WORK AS MAY BE REQUIRED ON THE PLANS AND DETAILS.
- PERFORM TEST REQUIRED BY THE OWNER OR THE ENGINEER IN CONNECTION WITH THE OPERATION OF THE ELECTRICAL SYSTEM IN THE BUILDING. ALL TESTS SHALL BE MADE IN ACCORDANCE WITH THE LATEST STANDARD OF THE IEEE AND THE NATIONAL ELECTRICAL CODE.
- MINIMUM CONDUCTOR SIZE SHALL BE #12, 600V INSULATION, MINIMUM SIZE CONDUIT SHALL BE 3/4" ELECTRICAL METALLIC TUBING (EMT) FOR INTERIOR USE, 1/2" RIGID ALUMINUM FOR EXTERIOR USE ABOVE GRADE AND 1" SCHEDULE 40 PVC BURIED ALUMINUM OR 1 1/2" FOR NON-VOLATILE TRAFFIC AREAS. FOR CONDUIT BEYOND AN AREA SHALL BE RATED FOR 10 FT. MINIMUM CABLE IS ALLOWED ABOVE PROTECTED CEILING. INTERIOR FITTINGS SHALL BE CAST WHERE EXPOSED ON WALLS AND EXTERIOR FITTINGS SHALL BE CAST BOXES WITH NEMA 3R COVERS.
- CONTRACTOR SHALL INSTALL WIRING AND OTHER CIRCUIT COMPONENTS TO MATCH EQUIPMENT ACTUALLY INSTALLED.
- ALL 120V RINGS LONGER THAN 60 FEET SHALL BE #10 AWG AND 277V RINGS LONGER THAN 150 FEET SHALL BE #10 AWG UNLESS NOTED OTHERWISE.
- INSTALL GROUND FAULT RECEPTACLES AT RECEPTACLE LOCATIONS WITHIN 5' OF SINKS OR LAVATORIES AND AT EXTERIOR LOCATIONS. EXTERIOR RECEPTACLES SHALL ALSO BE WATERPROOF. ALL RECEPTACLES IN A KITCHEN AREA SHALL HAVE GROUND FAULT PROTECTION.
- BONDING AND GROUNDING SHALL BE IN ACCORDANCE WITH NFPA 70:250-65, NFPA 70:250-25, 250-71 & 250-72.
- GROUND NEUTRAL IN ACCORDANCE WITH NFPA 70:250-238.
- FUSES SHALL BE TTT CLASS K5, 250 VOLT, 200,000 AMP INTERRUPTING CAP. DESIGN AND INSTALL ALARM SYSTEM TO MEET REQUIREMENTS OF THE STATE FIRE MARSHALL AND THE FIRE DISTRICT.
- EXTERIOR LIGHTING SHALL BE SHADDED OR INWARDLY DIRECTED IN SUCH A MANNER SO THAT NO DIRECT LIGHTING OR GLARE IS CAST BEYOND THE FOOTPRINT OF THE BUILDING. EXTERIOR LIGHTING SHALL NOT EXCEED ONE FOOT CANDLE AT THE REAR WALL OF THE BUILDING.
- ALL EXTERIOR MESSAGING AND SIGNING PRESERVING FIRE PARTITIONS SHALL BE FIRE RATED (PENETRATIONS TO BE RATED). THE PASSAGE OF FLAMES AND HOT GASES WHEN TESTED IN ACCORDANCE WITH ASTM-E814.)
- VERIFY ELECTRICAL CONNECTIONS PER MANUFACTURERS RECOMMENDATIONS.

### GENERAL LIGHTING

- ALL WORK SHALL COMPLY WITH APPLICABLE NATIONAL, STATE, AND LOCAL CODES AND REGULATIONS, AND REQUIREMENTS OF THE SERVICE UTILTY COMPANY.
- GENERAL CONTRACTOR SHALL NOTIFY THE ARCHITECT IMMEDIATELY IF ANY CONFLICTS OCCUR BETWEEN LIGHTING AND ANY OTHER TRADE. DO NOT PROCEED WITH INSTALLATION IN THAT AREA UNTIL CONFLICT HAS BEEN RESOLVED TO THE SATISFACTION OF THE ARCHITECT AND ENGINEER.
- REFER TO ARCHITECTURAL DRAWINGS FOR EXACT LOCATION AND MOUNTING INSTRUCTIONS FOR ALL LIGHT FIXTURES. NOTIFY THE ARCHITECT AND ENGINEER FOR ANY DISCREPANCIES BETWEEN THESE PLANS AND THE ARCHITECTURAL PLANS RELATING TO QUANTITY, TYPE AND LOCATION OF DEVICES AND FIXTURES.
- WHERE LIGHT FIXTURES HAVE BEEN SPECIFIED IN THE DRAWINGS, THE CONTRACTOR SHALL VERIFY THE EXISTING CONDITIONS AND THE NUMBER OF THE LIGHT FIXTURES SHALL BE AS EVEN AS POSSIBLE.
- WHERE FLUORESCENT FIXTURES ARE SHOWN TO BE DIMMED, THE CONTRACTOR SHALL HAVE DIMMING THE BALLASTS WHICH ARE DIMMABLE WITH THE SPECIFIED DIMMERS.
- WHERE LED FIXTURES ARE SHOWN TO BE DIMMED, THE DIMMER SHALL BE DIMMABLE WITH THE SPECIFIED DIMMERS.
- ALL DIMMERS SHALL HAVE A WATTAGE RATING 25% HIGHER THAN THE TOTAL WATTAGE OF ALL LIGHTS TO BE CONTROLLED BY THE DIMMER. DIMMER SIZES 600, 1000, 1500, AND 2000 WATTS. LUTRON NOVA T-STAR, WHERE SWITCHES ARE GANGED WITH DIMMERS, THE DIMMER SHALL ALSO BE LUTRON NOVA T-STAR. FLUORESCENT AND LOW VOLTAGE DIMMERS SHALL BE LUTRON NOVA T-STAR.
- WHERE FLUORESCENT FIXTURES ARE SHOWN TO BE DIMMED, THE CONTRACTOR SHALL HAVE DIMMING THE BALLASTS WHICH ARE DIMMABLE WITH THE SPECIFIED DIMMERS.
- WHERE LED FIXTURES ARE SHOWN TO BE DIMMED, THE DIMMER SHALL BE DIMMABLE WITH THE SPECIFIED DIMMERS.
- ALL DIMMERS SHALL HAVE A WATTAGE RATING 25% HIGHER THAN THE TOTAL WATTAGE OF ALL LIGHTS TO BE CONTROLLED BY THE DIMMER. DIMMER SIZES 600, 1000, 1500, AND 2000 WATTS. LUTRON NOVA T-STAR, WHERE SWITCHES ARE GANGED WITH DIMMERS, THE DIMMER SHALL ALSO BE LUTRON NOVA T-STAR. FLUORESCENT AND LOW VOLTAGE DIMMERS SHALL BE LUTRON NOVA T-STAR.
- WHERE FLUORESCENT FIXTURES ARE SHOWN TO BE DIMMED, THE CONTRACTOR SHALL HAVE DIMMING THE BALLASTS WHICH ARE DIMMABLE WITH THE SPECIFIED DIMMERS.
- WHERE LED FIXTURES ARE SHOWN TO BE DIMMED, THE DIMMER SHALL BE DIMMABLE WITH THE SPECIFIED DIMMERS.
- ALL DIMMERS SHALL HAVE A WATTAGE RATING 25% HIGHER THAN THE TOTAL WATTAGE OF ALL LIGHTS TO BE CONTROLLED BY THE DIMMER. DIMMER SIZES 600, 1000, 1500, AND 2000 WATTS. LUTRON NOVA T-STAR, WHERE SWITCHES ARE GANGED WITH DIMMERS, THE DIMMER SHALL ALSO BE LUTRON NOVA T-STAR. FLUORESCENT AND LOW VOLTAGE DIMMERS SHALL BE LUTRON NOVA T-STAR.
- WHERE FLUORESCENT FIXTURES ARE SHOWN TO BE DIMMED, THE CONTRACTOR SHALL HAVE DIMMING THE BALLASTS WHICH ARE DIMMABLE WITH THE SPECIFIED DIMMERS.
- WHERE LED FIXTURES ARE SHOWN TO BE DIMMED, THE DIMMER SHALL BE DIMMABLE WITH THE SPECIFIED DIMMERS.
- ALL DIMMERS SHALL HAVE A WATTAGE RATING 25% HIGHER THAN THE TOTAL WATTAGE OF ALL LIGHTS TO BE CONTROLLED BY THE DIMMER. DIMMER SIZES 600, 1000, 1500, AND 2000 WATTS. LUTRON NOVA T-STAR, WHERE SWITCHES ARE GANGED WITH DIMMERS, THE DIMMER SHALL ALSO BE LUTRON NOVA T-STAR. FLUORESCENT AND LOW VOLTAGE DIMMERS SHALL BE LUTRON NOVA T-STAR.
- WHERE FLUORESCENT FIXTURES ARE SHOWN TO BE DIMMED, THE CONTRACTOR SHALL HAVE DIMMING THE BALLASTS WHICH ARE DIMMABLE WITH THE SPECIFIED DIMMERS.
- WHERE LED FIXTURES ARE SHOWN TO BE DIMMED, THE DIMMER SHALL BE DIMMABLE WITH THE SPECIFIED DIMMERS.
- ALL DIMMERS SHALL HAVE A WATTAGE RATING 25% HIGHER THAN THE TOTAL WATTAGE OF ALL LIGHTS TO BE CONTROLLED BY THE DIMMER. DIMMER SIZES 600, 1000, 1500, AND 2000 WATTS. LUTRON NOVA T-STAR, WHERE SWITCHES ARE GANGED WITH DIMMERS, THE DIMMER SHALL ALSO BE LUTRON NOVA T-STAR. FLUORESCENT AND LOW VOLTAGE DIMMERS SHALL BE LUTRON NOVA T-STAR.
- WHERE FLUORESCENT FIXTURES ARE SHOWN TO BE DIMMED, THE CONTRACTOR SHALL HAVE DIMMING THE BALLASTS WHICH ARE DIMMABLE WITH THE SPECIFIED DIMMERS.
- WHERE LED FIXTURES ARE SHOWN TO BE DIMMED, THE DIMMER SHALL BE DIMMABLE WITH THE SPECIFIED DIMMERS.
- ALL DIMMERS SHALL HAVE A WATTAGE RATING 25% HIGHER THAN THE TOTAL WATTAGE OF ALL LIGHTS TO BE CONTROLLED BY THE DIMMER. DIMMER SIZES 600, 1000, 1500, AND 2000 WATTS. LUTRON NOVA T-STAR, WHERE SWITCHES ARE GANGED WITH DIMMERS, THE DIMMER SHALL ALSO BE LUTRON NOVA T-STAR. FLUORESCENT AND LOW VOLTAGE DIMMERS SHALL BE LUTRON NOVA T-STAR.
- WHERE FLUORESCENT FIXTURES ARE SHOWN TO BE DIMMED, THE CONTRACTOR SHALL HAVE DIMMING THE BALLASTS WHICH ARE DIMMABLE WITH THE SPECIFIED DIMMERS.
- WHERE LED FIXTURES ARE SHOWN TO BE DIMMED, THE DIMMER SHALL BE DIMMABLE WITH THE SPECIFIED DIMMERS.
- ALL DIMMERS SHALL HAVE A WATTAGE RATING 25% HIGHER THAN THE TOTAL WATTAGE OF ALL LIGHTS TO BE CONTROLLED BY THE DIMMER. DIMMER SIZES 600, 1000, 1500, AND 2000 WATTS. LUTRON NOVA T-STAR, WHERE SWITCHES ARE GANGED WITH DIMMERS, THE DIMMER SHALL ALSO BE LUTRON NOVA T-STAR. FLUORESCENT AND LOW VOLTAGE DIMMERS SHALL BE LUTRON NOVA T-STAR.
- WHERE FLUORESCENT FIXTURES ARE SHOWN TO BE DIMMED, THE CONTRACTOR SHALL HAVE DIMMING THE BALLASTS WHICH ARE DIMMABLE WITH THE SPECIFIED DIMMERS.
- WHERE LED FIXTURES ARE SHOWN TO BE DIMMED, THE DIMMER SHALL BE DIMMABLE WITH THE SPECIFIED DIMMERS.
- ALL DIMMERS SHALL HAVE A WATTAGE RATING 25% HIGHER THAN THE TOTAL WATTAGE OF ALL LIGHTS TO BE CONTROLLED BY THE DIMMER. DIMMER SIZES 600, 1000, 1500, AND 2000 WATTS. LUTRON NOVA T-STAR, WHERE SWITCHES ARE GANGED WITH DIMMERS, THE DIMMER SHALL ALSO BE LUTRON NOVA T-STAR. FLUORESCENT AND LOW VOLTAGE DIMMERS SHALL BE LUTRON NOVA T-STAR.
- WHERE FLUORESCENT FIXTURES ARE SHOWN TO BE DIMMED, THE CONTRACTOR SHALL HAVE DIMMING THE BALLASTS WHICH ARE DIMMABLE WITH THE SPECIFIED DIMMERS.
- WHERE LED FIXTURES ARE SHOWN TO BE DIMMED, THE DIMMER SHALL BE DIMMABLE WITH THE SPECIFIED DIMMERS.
- ALL DIMMERS SHALL HAVE A WATTAGE RATING 25% HIGHER THAN THE TOTAL WATTAGE OF ALL LIGHTS TO BE CONTROLLED BY THE DIMMER. DIMMER SIZES 600, 1000, 1500, AND 2000 WATTS. LUTRON NOVA T-STAR, WHERE SWITCHES ARE GANGED WITH DIMMERS, THE DIMMER SHALL ALSO BE LUTRON NOVA T-STAR. FLUORESCENT AND LOW VOLTAGE DIMMERS SHALL BE LUTRON NOVA T-STAR.
- WHERE FLUORESCENT FIXTURES ARE SHOWN TO BE DIMMED, THE CONTRACTOR SHALL HAVE DIMMING THE BALLASTS WHICH ARE DIMMABLE WITH THE SPECIFIED DIMMERS.
- WHERE LED FIXTURES ARE SHOWN TO BE DIMMED, THE DIMMER SHALL BE DIMMABLE WITH THE SPECIFIED DIMMERS.
- ALL DIMMERS SHALL HAVE A WATTAGE RATING 25% HIGHER THAN THE TOTAL WATTAGE OF ALL LIGHTS TO BE CONTROLLED BY THE DIMMER. DIMMER SIZES 600, 1000, 1500, AND 2000 WATTS. LUTRON NOVA T-STAR, WHERE SWITCHES ARE GANGED WITH DIMMERS, THE DIMMER SHALL ALSO BE LUTRON NOVA T-STAR. FLUORESCENT AND LOW VOLTAGE DIMMERS SHALL BE LUTRON NOVA T-STAR.
- WHERE FLUORESCENT FIXTURES ARE SHOWN TO BE DIMMED, THE CONTRACTOR SHALL HAVE DIMMING THE BALLASTS WHICH ARE DIMMABLE WITH THE SPECIFIED DIMMERS.
- WHERE LED FIXTURES ARE SHOWN TO BE DIMMED, THE DIMMER SHALL BE DIMMABLE WITH THE SPECIFIED DIMMERS.
- ALL DIMMERS SHALL HAVE A WATTAGE RATING 25% HIGHER THAN THE TOTAL WATTAGE OF ALL LIGHTS TO BE CONTROLLED BY THE DIMMER. DIMMER SIZES 600, 1000, 1500, AND 2000 WATTS. LUTRON NOVA T-STAR, WHERE SWITCHES ARE GANGED WITH DIMMERS, THE DIMMER SHALL ALSO BE LUTRON NOVA T-STAR. FLUORESCENT AND LOW VOLTAGE DIMMERS SHALL BE LUTRON NOVA T-STAR.
- WHERE FLUORESCENT FIXTURES ARE SHOWN TO BE DIMMED, THE CONTRACTOR SHALL HAVE DIMMING THE BALLASTS WHICH ARE DIMMABLE WITH THE SPECIFIED DIMMERS.
- WHERE LED FIXTURES ARE SHOWN TO BE DIMMED, THE DIMMER SHALL BE DIMMABLE WITH THE SPECIFIED DIMMERS.
- ALL DIMMERS SHALL HAVE A WATTAGE RATING 25% HIGHER THAN THE TOTAL WATTAGE OF ALL LIGHTS TO BE CONTROLLED BY THE DIMMER. DIMMER SIZES 600, 1000, 1500, AND 2000 WATTS. LUTRON NOVA T-STAR, WHERE SWITCHES ARE GANGED WITH DIMMERS, THE DIMMER SHALL ALSO BE LUTRON NOVA T-STAR. FLUORESCENT AND LOW VOLTAGE DIMMERS SHALL BE LUTRON NOVA T-STAR.
- WHERE FLUORESCENT FIXTURES ARE SHOWN TO BE DIMMED, THE CONTRACTOR SHALL HAVE DIMMING THE BALLASTS WHICH ARE DIMMABLE WITH THE SPECIFIED DIMMERS.
- WHERE LED FIXTURES ARE SHOWN TO BE DIMMED, THE DIMMER SHALL BE DIMMABLE WITH THE SPECIFIED DIMMERS.
- ALL DIMMERS SHALL HAVE A WATTAGE RATING 25% HIGHER THAN THE TOTAL WATTAGE OF ALL LIGHTS TO BE CONTROLLED BY THE DIMMER. DIMMER SIZES 600, 1000, 1500, AND 2000 WATTS. LUTRON NOVA T-STAR, WHERE SWITCHES ARE GANGED WITH DIMMERS, THE DIMMER SHALL ALSO BE LUTRON NOVA T-STAR. FLUORESCENT AND LOW VOLTAGE DIMMERS SHALL BE LUTRON NOVA T-STAR.
- WHERE FLUORESCENT FIXTURES ARE SHOWN TO BE DIMMED, THE CONTRACTOR SHALL HAVE DIMMING THE BALLASTS WHICH ARE DIMMABLE WITH THE SPECIFIED DIMMERS.
- WHERE LED FIXTURES ARE SHOWN TO BE DIMMED, THE DIMMER SHALL BE DIMMABLE WITH THE SPECIFIED DIMMERS.
- ALL DIMMERS SHALL HAVE A WATTAGE RATING 25% HIGHER THAN THE TOTAL WATTAGE OF ALL LIGHTS TO BE CONTROLLED BY THE DIMMER. DIMMER SIZES 600, 1000, 1500, AND 2000 WATTS. LUTRON NOVA T-STAR, WHERE SWITCHES ARE GANGED WITH DIMMERS, THE DIMMER SHALL ALSO BE LUTRON NOVA T-STAR. FLUORESCENT AND LOW VOLTAGE DIMMERS SHALL BE LUTRON NOVA T-STAR.
- WHERE FLUORESCENT FIXTURES ARE SHOWN TO BE DIMMED, THE CONTRACTOR SHALL HAVE DIMMING THE BALLASTS WHICH ARE DIMMABLE WITH THE SPECIFIED DIMMERS.
- WHERE LED FIXTURES ARE SHOWN TO BE DIMMED, THE DIMMER SHALL BE DIMMABLE WITH THE SPECIFIED DIMMERS.
- ALL DIMMERS SHALL HAVE A WATTAGE RATING 25% HIGHER THAN THE TOTAL WATTAGE OF ALL LIGHTS TO BE CONTROLLED BY THE DIMMER. DIMMER SIZES 600, 1000, 1500, AND 2000 WATTS. LUTRON NOVA T-STAR, WHERE SWITCHES ARE GANGED WITH DIMMERS, THE DIMMER SHALL ALSO BE LUTRON NOVA T-STAR. FLUORESCENT AND LOW VOLTAGE DIMMERS SHALL BE LUTRON NOVA T-STAR.
- WHERE FLUORESCENT FIXTURES ARE SHOWN TO BE DIMMED, THE CONTRACTOR SHALL HAVE DIMMING THE BALLASTS WHICH ARE DIMMABLE WITH THE SPECIFIED DIMMERS.
- WHERE LED FIXTURES ARE SHOWN TO BE DIMMED, THE DIMMER SHALL BE DIMMABLE WITH THE SPECIFIED DIMMERS.
- ALL DIMMERS SHALL HAVE A WATTAGE RATING 25% HIGHER THAN THE TOTAL WATTAGE OF ALL LIGHTS TO BE CONTROLLED BY THE DIMMER. DIMMER SIZES 600, 1000, 1500, AND 2000 WATTS. LUTRON NOVA T-STAR, WHERE SWITCHES ARE GANGED WITH DIMMERS, THE DIMMER SHALL ALSO BE LUTRON NOVA T-STAR. FLUORESCENT AND LOW VOLTAGE DIMMERS SHALL BE LUTRON NOVA T-STAR.
- WHERE FLUORESCENT FIXTURES ARE SHOWN TO BE DIMMED, THE CONTRACTOR SHALL HAVE DIMMING THE BALLASTS WHICH ARE DIMMABLE WITH THE SPECIFIED DIMMERS.
- WHERE LED FIXTURES ARE SHOWN TO BE DIMMED, THE DIMMER SHALL BE DIMMABLE WITH THE SPECIFIED DIMMERS.
- ALL DIMMERS SHALL HAVE A WATTAGE RATING 25% HIGHER THAN THE TOTAL WATTAGE OF ALL LIGHTS TO BE CONTROLLED BY THE DIMMER. DIMMER SIZES 600, 1000, 1500, AND 2000 WATTS. LUTRON NOVA T-STAR, WHERE SWITCHES ARE GANGED WITH DIMMERS, THE DIMMER SHALL ALSO BE LUTRON NOVA T-STAR. FLUORESCENT AND LOW VOLTAGE DIMMERS SHALL BE LUTRON NOVA T-STAR.
- WHERE FLUORESCENT FIXTURES ARE SHOWN TO BE DIMMED, THE CONTRACTOR SHALL HAVE DIMMING THE BALLASTS WHICH ARE DIMMABLE WITH THE SPECIFIED DIMMERS.
- WHERE LED FIXTURES ARE SHOWN TO BE DIMMED, THE DIMMER SHALL BE DIMMABLE WITH THE SPECIFIED DIMMERS.
- ALL DIMMERS SHALL HAVE A WATTAGE RATING 25% HIGHER THAN THE TOTAL WATTAGE OF ALL LIGHTS TO BE CONTROLLED BY THE DIMMER. DIMMER SIZES 600, 1000, 1500, AND 2000 WATTS. LUTRON NOVA T-STAR, WHERE SWITCHES ARE GANGED WITH DIMMERS, THE DIMMER SHALL ALSO BE LUTRON NOVA T-STAR. FLUORESCENT AND LOW VOLTAGE DIMMERS SHALL BE LUTRON NOVA T-STAR.
- WHERE FLUORESCENT FIXTURES ARE SHOWN TO BE DIMMED, THE CONTRACTOR SHALL HAVE DIMMING THE BALLASTS WHICH ARE DIMMABLE WITH THE SPECIFIED DIMMERS.
- WHERE LED FIXTURES ARE SHOWN TO BE DIMMED, THE DIMMER SHALL BE DIMMABLE WITH THE SPECIFIED DIMMERS.
- ALL DIMMERS SHALL HAVE A WATTAGE RATING 25% HIGHER THAN THE TOTAL WATTAGE OF ALL LIGHTS TO BE CONTROLLED BY THE DIMMER. DIMMER SIZES 600, 1000, 1500, AND 2000 WATTS. LUTRON NOVA T-STAR, WHERE SWITCHES ARE GANGED WITH DIMMERS, THE DIMMER SHALL ALSO BE LUTRON NOVA T-STAR. FLUORESCENT AND LOW VOLTAGE DIMMERS SHALL BE LUTRON NOVA T-STAR.
- WHERE FLUORESCENT FIXTURES ARE SHOWN TO BE DIMMED, THE CONTRACTOR SHALL HAVE DIMMING THE BALLASTS WHICH ARE DIMMABLE WITH THE SPECIFIED DIMMERS.
- WHERE LED FIXTURES ARE SHOWN TO BE DIMMED, THE DIMMER SHALL BE DIMMABLE WITH THE SPECIFIED DIMMERS.
- ALL DIMMERS SHALL HAVE A WATTAGE RATING 25% HIGHER THAN THE TOTAL WATTAGE OF ALL LIGHTS TO BE CONTROLLED BY THE DIMMER. DIMMER SIZES 600, 1000, 1500, AND 2000 WATTS. LUTRON NOVA T-STAR, WHERE SWITCHES ARE GANGED WITH DIMMERS, THE DIMMER SHALL ALSO BE LUTRON NOVA T-STAR. FLUORESCENT AND LOW VOLTAGE DIMMERS SHALL BE LUTRON NOVA T-STAR.
- WHERE FLUORESCENT FIXTURES ARE SHOWN TO BE DIMMED, THE CONTRACTOR SHALL HAVE DIMMING THE BALLASTS WHICH ARE DIMMABLE WITH THE SPECIFIED DIMMERS.
- WHERE LED FIXTURES ARE SHOWN TO BE DIMMED, THE DIMMER SHALL BE DIMMABLE WITH THE SPECIFIED DIMMERS.
- ALL DIMMERS SHALL HAVE A WATTAGE RATING 25% HIGHER THAN THE TOTAL WATTAGE OF ALL LIGHTS TO BE CONTROLLED BY THE DIMMER. DIMMER SIZES 600, 1000, 1500, AND 2000 WATTS. LUTRON NOVA T-STAR, WHERE SWITCHES ARE GANGED WITH DIMMERS, THE DIMMER SHALL ALSO BE LUTRON NOVA T-STAR. FLUORESCENT AND LOW VOLTAGE DIMMERS SHALL BE LUTRON NOVA T-STAR.
- WHERE FLUORESCENT FIXTURES ARE SHOWN TO BE DIMMED, THE CONTRACTOR SHALL HAVE DIMMING THE BALLASTS WHICH ARE DIMMABLE WITH THE SPECIFIED DIMMERS.
- WHERE LED FIXTURES ARE SHOWN TO BE DIMMED, THE DIMMER SHALL BE DIMMABLE WITH THE SPECIFIED DIMMERS.
- ALL DIMMERS SHALL HAVE A WATTAGE RATING 25% HIGHER THAN THE TOTAL WATTAGE OF ALL LIGHTS TO BE CONTROLLED BY THE DIMMER. DIMMER SIZES 600, 1000, 1500, AND 2000 WATTS. LUTRON NOVA T-STAR, WHERE SWITCHES ARE GANGED WITH DIMMERS, THE DIMMER SHALL ALSO BE LUTRON NOVA T-STAR. FLUORESCENT AND LOW VOLTAGE DIMMERS SHALL BE LUTRON NOVA T-STAR.
- WHERE FLUORESCENT FIXTURES ARE SHOWN TO BE DIMMED, THE CONTRACTOR SHALL HAVE DIMMING THE BALLASTS WHICH ARE DIMMABLE WITH THE SPECIFIED DIMMERS.
- WHERE LED FIXTURES ARE SHOWN TO BE DIMMED, THE DIMMER SHALL BE DIMMABLE WITH THE SPECIFIED DIMMERS.
- ALL DIMMERS SHALL HAVE A WATTAGE RATING 25% HIGHER THAN THE TOTAL WATTAGE OF ALL LIGHTS TO BE CONTROLLED BY THE DIMMER. DIMMER SIZES 600, 1000, 1500, AND 2000 WATTS. LUTRON NOVA T-STAR, WHERE SWITCHES ARE GANGED WITH DIMMERS, THE DIMMER SHALL ALSO BE LUTRON NOVA T-STAR. FLUORESCENT AND LOW VOLTAGE DIMMERS SHALL BE LUTRON NOVA T-STAR.
- WHERE FLUORESCENT FIXTURES ARE SHOWN TO BE DIMMED, THE CONTRACTOR SHALL HAVE DIMMING THE BALLASTS WHICH ARE DIMMABLE WITH THE SPECIFIED DIMMERS.
- WHERE LED FIXTURES ARE SHOWN TO BE DIMMED, THE DIMMER SHALL BE DIMMABLE WITH THE SPECIFIED DIMMERS.
- ALL DIMMERS SHALL HAVE A WATTAGE RATING 25% HIGHER THAN THE TOTAL WATTAGE OF ALL LIGHTS TO BE CONTROLLED BY THE DIMMER. DIMMER SIZES 600, 1000, 1500, AND 2000 WATTS. LUTRON NOVA T-STAR, WHERE SWITCHES ARE GANGED WITH DIMMERS, THE DIMMER SHALL ALSO BE LUTRON NOVA T-STAR. FLUORESCENT AND LOW VOLTAGE DIMMERS SHALL BE LUTRON NOVA T-STAR.
- WHERE FLUORESCENT FIXTURES ARE SHOWN TO BE DIMMED, THE CONTRACTOR SHALL HAVE DIMMING THE BALLASTS WHICH ARE DIMMABLE WITH THE SPECIFIED DIMMERS.
- WHERE LED FIXTURES ARE SHOWN TO BE DIMMED, THE DIMMER SHALL BE DIMMABLE WITH THE SPECIFIED DIMMERS.
- ALL DIMMERS SHALL HAVE A WATTAGE RATING 25% HIGHER THAN THE TOTAL WATTAGE OF ALL LIGHTS TO BE CONTROLLED BY THE DIMMER. DIMMER SIZES 600, 1000, 1500, AND 2000 WATTS. LUTRON NOVA T-STAR, WHERE SWITCHES ARE GANGED WITH DIMMERS, THE DIMMER SHALL ALSO BE LUTRON NOVA T-STAR. FLUORESCENT AND LOW VOLTAGE DIMMERS SHALL BE LUTRON NOVA T-STAR.
- WHERE FLUORESCENT FIXTURES ARE SHOWN TO BE DIMMED, THE CONTRACTOR SHALL HAVE DIMMING THE BALLASTS WHICH ARE DIMMABLE WITH THE SPECIFIED DIMMERS.
- WHERE LED FIXTURES ARE SHOWN TO BE DIMMED, THE DIMMER SHALL BE DIMMABLE WITH THE SPECIFIED DIMMERS.
- ALL DIMMERS SHALL HAVE A WATTAGE RATING 25% HIGHER THAN THE TOTAL WATTAGE OF ALL LIGHTS TO BE CONTROLLED BY THE DIMMER. DIMMER SIZES 600, 1000, 1500, AND 2000 WATTS. LUTRON NOVA T-STAR, WHERE SWITCHES ARE GANGED WITH DIMMERS, THE DIMMER SHALL ALSO BE LUTRON NOVA T-STAR. FLUORESCENT AND LOW VOLTAGE DIMMERS SHALL BE LUTRON NOVA T-STAR.
- WHERE FLUORESCENT FIXTURES ARE SHOWN TO BE DIMMED, THE CONTRACTOR SHALL HAVE DIMMING THE BALLASTS WHICH ARE DIMMABLE WITH THE SPECIFIED DIMMERS.
- WHERE LED FIXTURES ARE SHOWN TO BE DIMMED, THE DIMMER SHALL BE DIMMABLE WITH THE SPECIFIED DIMMERS.
- ALL DIMMERS SHALL HAVE A WATTAGE RATING 25% HIGHER THAN THE TOTAL WATTAGE OF ALL LIGHTS TO BE CONTROLLED BY THE DIMMER. DIMMER SIZES 600, 1000, 1500, AND 2000 WATTS. LUTRON NOVA T-STAR, WHERE SWITCHES ARE GANGED WITH DIMMERS, THE DIMMER SHALL ALSO BE LUTRON NOVA T-STAR. FLUORESCENT AND LOW VOLTAGE DIMMERS SHALL BE LUTRON NOVA T-STAR.
- WHERE FLUORESCENT FIXTURES ARE SHOWN TO BE