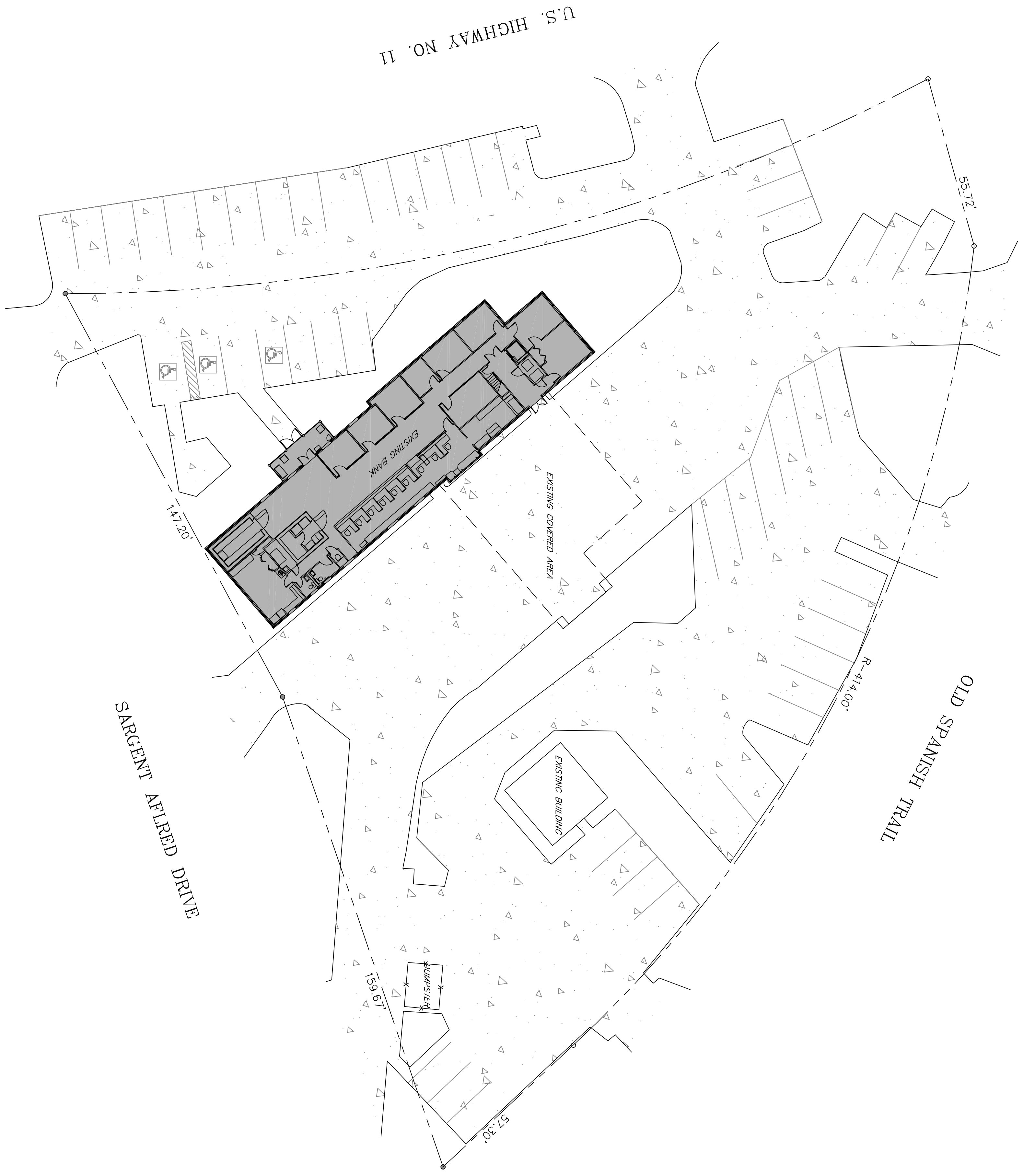


EXISTING SITE PLAN
SCALE: 1" = 20'-0"

EXISTING SITE PLAN



**RENOVATIONS TO EXISTING BANK FOR
ST TAMMANY
FEDERAL CREDIT
UNION**
550 PONTCHARTRAIN DRIVE
SLIDELL LA 70458

JOB No: 2306 DATE: 01-31-17
DRAWN BY: CKD CHECKED BY: JMS

The above drawings and specifications, design and arrangements represent the design and shall remain the property of Dammon Engineering, Inc. and no part thereof shall be copied, reproduced or altered, in whole or in part, without the written consent of Dammon Engineering, Inc. All work shall be done in accordance with the specific requirements of the project. The drawings and specifications shall be used only for the project for which they have been prepared and developed without written consent of Dammon Engineering, Inc. All work shall be done in accordance with the specific requirements of the project.

REVISIONS		DATE
#	DESCRIPTION	

DAMMON
ENGINEERING, INC.
LOUISIANA & MISSISSIPPI

Chief Engineer: Brian Mistich, PE
554 Old Spanish Trail
Slidell, LA 70458

www.dammonengineering.com
Info@dammonengineering.com
PH: 985.649.5832 F: 985.641.5950

SHEET NO. 2 OF 3

C101

DRAWING NUMBER: