

DOOR SCHEDULE													
MARK	TYPE	MATERIAL	SIZE			HARDWARE SET	FRAME MATERIAL	FRAME TYPE	DETAILS			FIRE RATING	REMARKS/ NOTES
			WIDTH	HEIGHT	THICKNESS				HEAD	JAMB	SILL		
100													
101	F	WD	3'-0"	7'-0"			HM	A					
102	F	WD	3'-0"	7'-0"			HM	A					
103	F	WD	3'-0"	7'-0"			HM	A					
103a													
104	F	WD	3'-0"	7'-0"			HM	A					
105	F	WD	3'-0"	7'-0"			HM	A					
106	F	WD	3'-0"	7'-0"			HM	A					
107	F	WD	3'-0"	7'-0"			HM	A					
107A	F	WD	3'-0"	7'-0"			HM	A					
108	F	WD	3'-0"	7'-0"			HM	A					
109	F	HM	3'-0"	7'-0"			HM	A					
110	F	WD	3'-0"	7'-0"			HM	A					
111	F	WD	3'-0"	7'-0"			HM	A					
113	F	WD	3'-0"	7'-0"			HM	A					
114	F	WD	3'-0"	7'-0"			HM	A					
117	F	WD	3'-0"	7'-0"			HM	A					

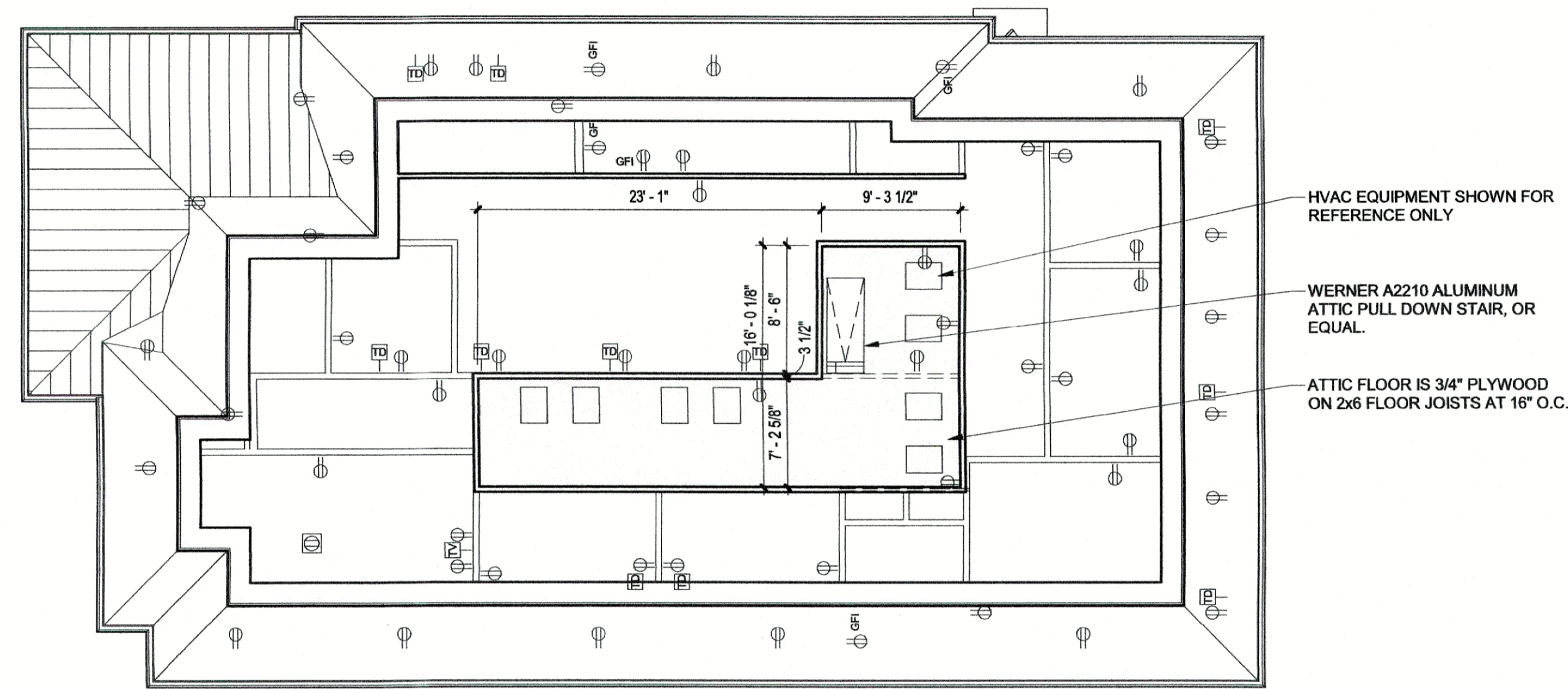
DOOR LEGEND:
AL ALUMINUM
AL-N ALUMINUM - NARROW STILE
DG DUAL-GLASS LITE DOOR
F FLUSH DOOR
HG HALF-GLASS LITE DOOR
HM HOLLOW METAL
HM-GALV HOLLOW METAL - GALVANIZED
NG NARROW-GLASS LITE DOOR
WD WOOD

DOOR REMARKS:
1. ???

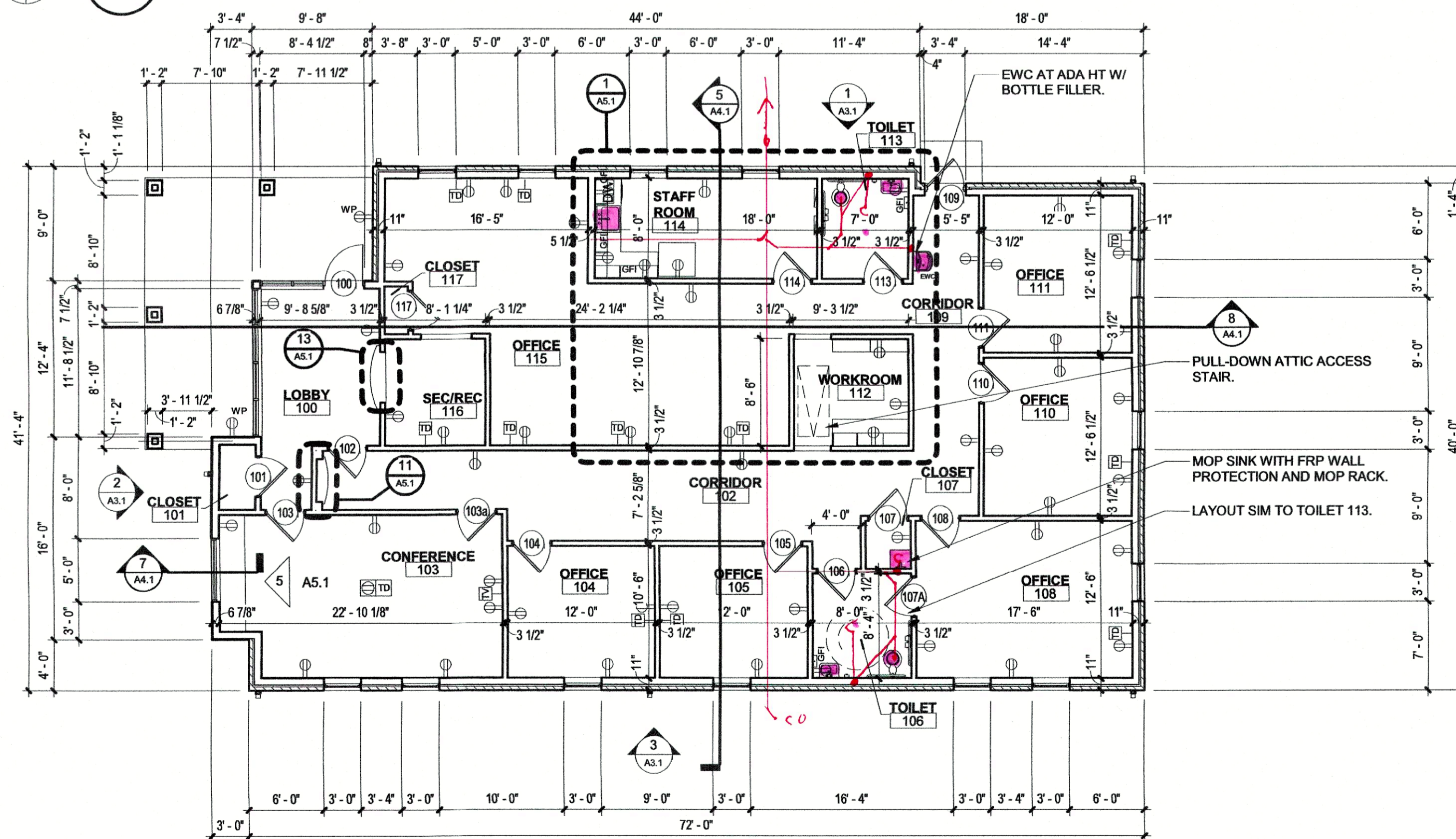
ROOM SCHEDULES							
Number	Name	Area	Floor Finish	Base Finish	Wall Finish	Ceiling Finish	Comments
100	LOBBY	140 SF					
101	CLOSET	15 SF					
102	CORRIDOR	329 SF					
103	CONFERENCE	279 SF					
104	OFFICE	124 SF					
105	OFFICE	124 SF					
106	TOILET	65 SF					
107	CLOSET	14 SF					
108	OFFICE	216 SF					
109	CORRIDOR	145 SF					
110	OFFICE	148 SF					
111	OFFICE	148 SF					
112	WORKROOM	77 SF					
113	TOILET	54 SF					
114	STAFF ROOM	141 SF					
115	OFFICE	488 SF					
116	SEC/REC	67 SF					
117	CLOSET	7 SF					

ROOM LEGEND:
ATC ACOUSTIC TILE CEILING
CPT CARPET
CT CERAMIC TILE
GWB GYPSUM WALLBOARD
P PAINT
VB VINYL BASE
WB WOOD BASE

ROOM REMARKS:
1. ???



PROJECT NORTH
2 ATTIC PLAN
A2.1 1/8" = 1'-0"



TRUE NORTH PROJECT NORTH
1 FIRST FLOOR PLAN
A2.1 1/8" = 1'-0"

LEGEND

- AREA OF WORK NOT IN CONTRACT
- NEW WOOD STUD CONSTRUCTION, RE: PARTITION TYPES.
- EXISTING TO REMAIN
- TEMPORARY WALL
- EXISTING TO BE DEMOLISHED
- 1 HOUR FIRE RATED WALL CONSTRUCTION, RE: PARTITION WALL TYPES.
- 2 HOUR FIRE RATED WALL CONSTRUCTION, RE: PARTITION WALL TYPES.
- SMOKE TIGHT CONSTRUCTION WALL BUILT OF NON-COMBUSTIBLE MATERIALS, RE: PARTITION WALL TYPES.
- FIRE EXTINGUISHER CABINET - SEMI RECESSED
- WALL MOUNTED FIRE EXTINGUISHER
- CORNER GUARD, FLUSH MOUNTED
- ENDCAP, FLUSH MOUNTED
- CARD READER
- PUSH PLATE/ DOOR ACTIVATOR

WALL NOTES:

- TYPICAL INTERIOR WOOD STUDS SHALL BE 3 5/8", 6", OR 8". SEE PARTITION TYPES FOR SIZE AND HEIGHT OF WALL CONSTRUCTION.
- SOUND ATTENUATION BLANKETS FULL HEIGHT IN ALL FULL HEIGHT INTERIOR WOOD STUD WALLS.
- RESTROOM FLOORS SHALL BE RECESSED 1 1/2" TO ALLOW FOR CERAMIC TILE MORTAR BED TO SLOPE TO DRAIN. SLAB RECESS SHALL ALIGN WITH INSIDE EDGE OF WOOD STUD WALL.

KEYNOTES: (FIRST FLOOR PLAN)

X.

MCMATH
develop. design. build.

architecture
planning
interior design
sustainable design
consulting
1404 GREENGATE DRIVE, SUITE 101
CONVINGTON, LA 70433
866-883-4100

fl+
WB
architects
a professional corporation in continuous practice since 1981

ISSUE	DATE

McMath Construction
Office Building

Lot 2C Phillips Business Park

Schematic Design

Date
7 April 2020

Project Location

FLOOR PLANS

Job No. 220022.01

Drawn by _____ Checked by _____
Author Checker

A2.1
Sheet No.

THESE DRAWINGS ARE THE SOLE PROPERTY OF FLWB ARCHITECTS, APC AND ARE TO BE USED ONLY FOR THE PROJECT AND SITE SPECIFICALLY IDENTIFIED HEREIN. THESE DRAWINGS SHALL NOT BE COPIED, REPRODUCED OR USED IN ANY MANNER WITHOUT WRITTEN CONSENT OF FLWB ARCHITECTS, APC.