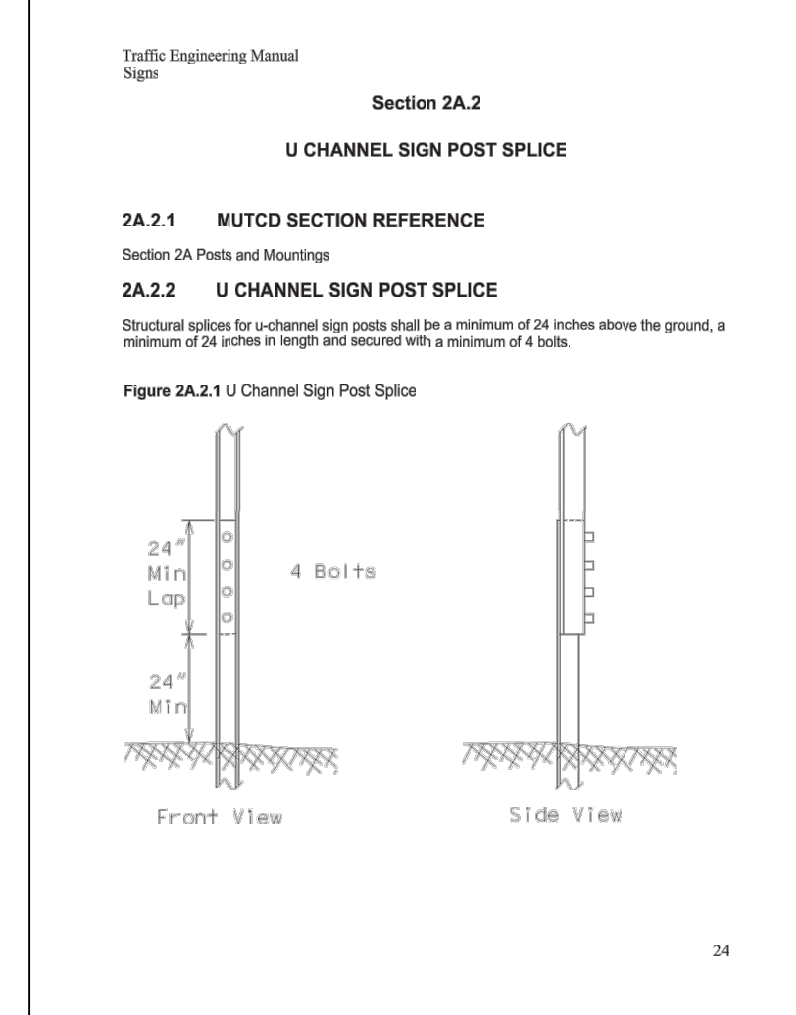
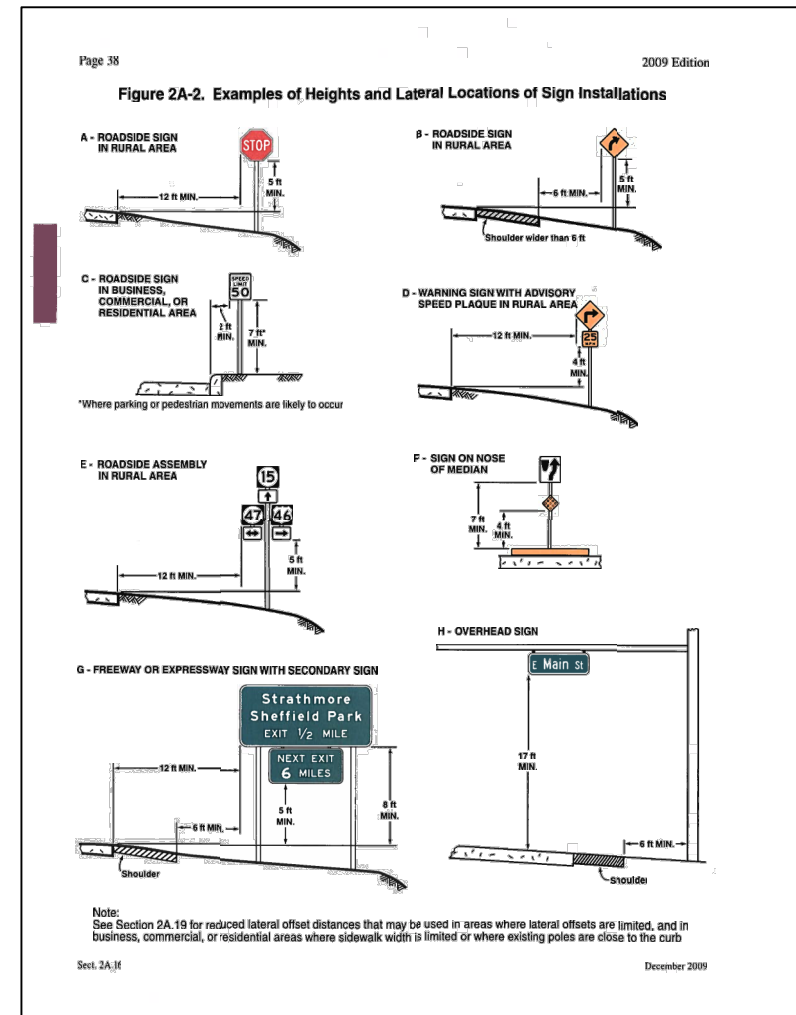
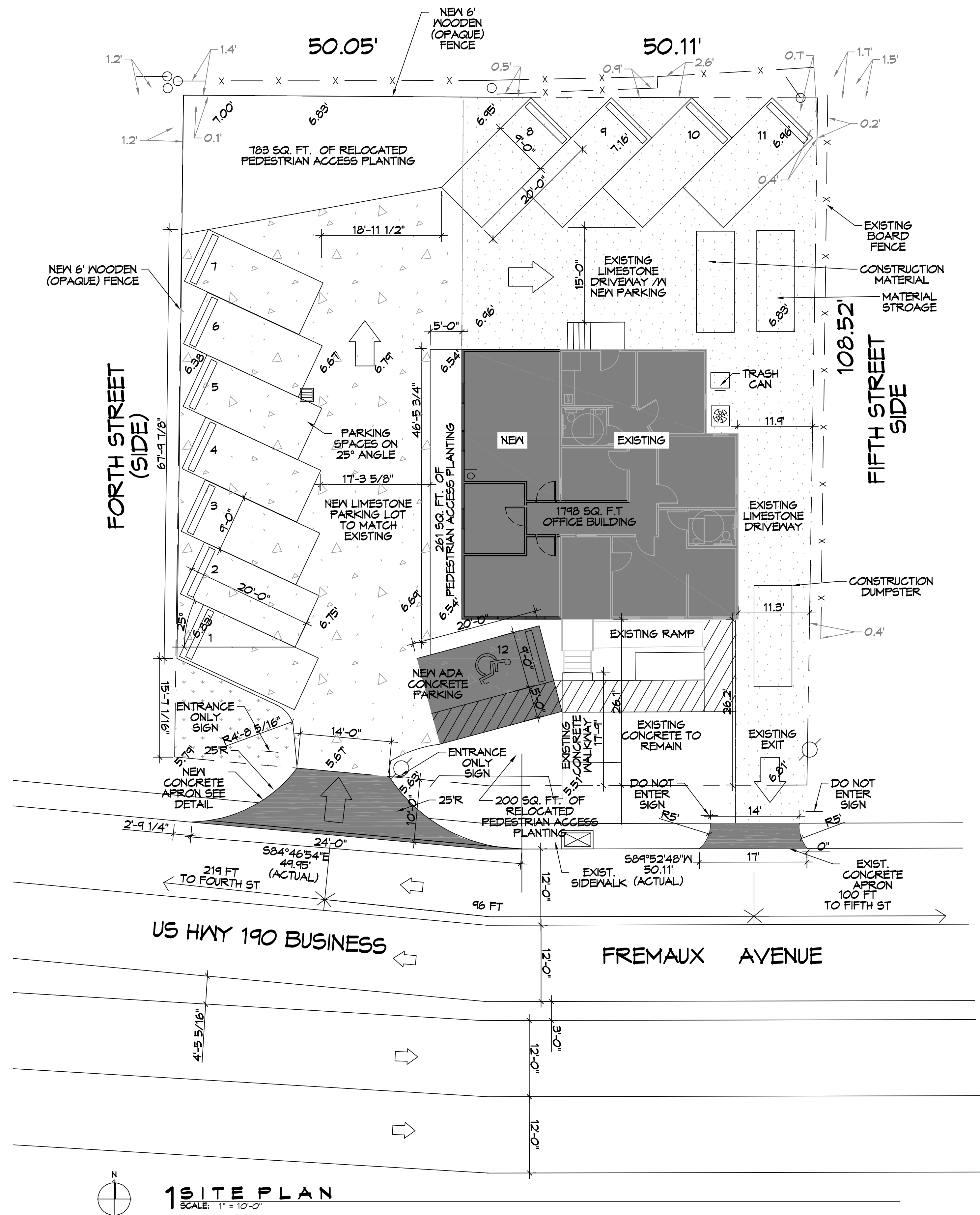


FILE NAME: C:\Users\adam\OneDrive\Documents\C101 - Site Plan.dwg PLOT DATE: 08/24/22 10:32:16 AM



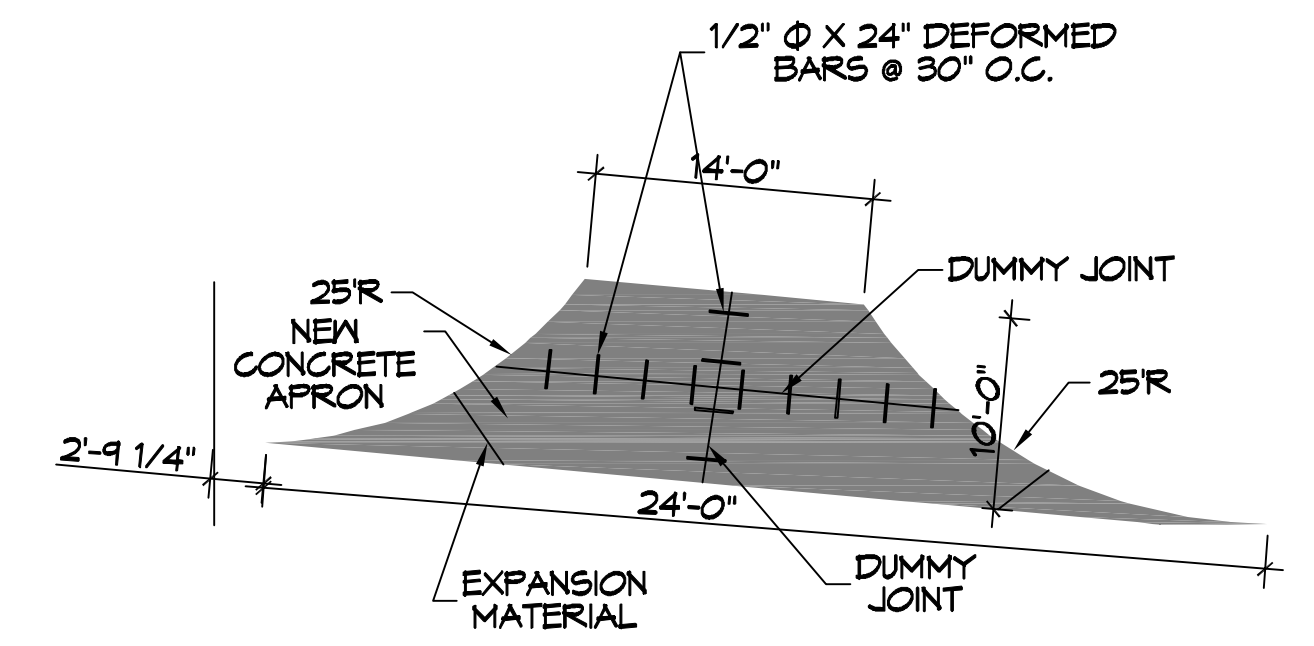
**2 SIGN ASSEMBLYS**  
SCALE: N.T.S.



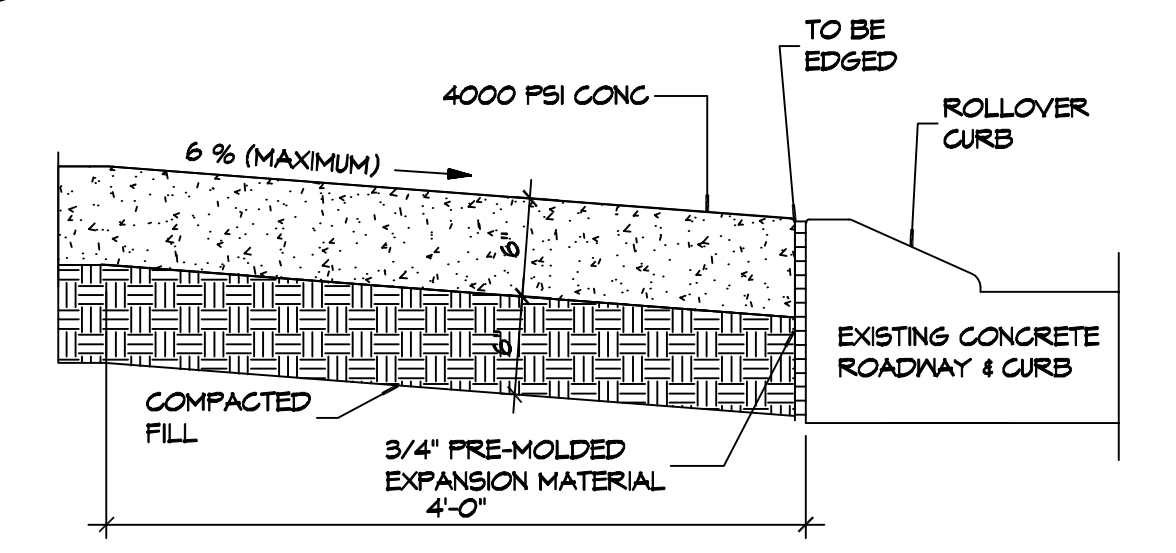
**1 SITE PLAN**  
SCALE: 1" = 10'-0"

<b>PLANNING</b>
ZONED C-2 COMMERCIAL DISTRICT
<b>FLOOD ZONE</b>
ZONE "AE"
<b>BUILDING ELEVATION</b>
BASE FLOOD ELEVATION "AE" = 11.0' FINISHED FLOOR ELEVATION = 8.0'
<b>PARKING</b>
BUSINESS AND PROFESSIONAL OFFICES 1 SPACE FOR EACH 200 SQUARE FEET OF GROSS FLOOR AREA. 1798 / 200 = 9 PARKING REQUIRED = 9 ACTUAL PROVIDED = 12
<b>SITE LIGHTING</b>
EXTERIOR LIGHTING SHALL BE SHADED OR INWARDLY DIRECTED IN SUCH A MANNER SO THAT NO DIRECT LIGHTING OR GLARE BE CAST BEYOND THE PROPERTY LINE. THE INTENSITY OF SUCH LIGHTING SHALL NOT EXCEED ONE FOOT CANDLE AS MEASURED AT THE ADJACENT PROPERTY LINE.

<b>GENERAL PAVING NOTES</b>	
CONCRETE MIX DESIGN MIX FOR ONE CUBIC YARD OF FIBER-REINFORCED CONCRETE	
28 DAY STRENGTH	4000 PSI
CEMENT (ASTM C-150, TYPE I/II)	4.64 SACKS (436 LBS.)
FLY ASH (ASTM C-618)	1.16 SACKS (109 LBS.)
GRAVEL (ASTM C-33, GRADE A)	1775 LBS.
SAND (ASTM C-33)	1226 LBS.
WATER (POTABLE)	30 GALLONS (250 LBS.) TYPE A
WATER REDUCER (ASTM C-494)	16.35 LBS.
AIR ENTRAINMENT	5% BY VOLUME, USE PER MANUFACTURER'S SPECS.
FIBER REINFORCEMENT	1.5 LBS./CY MICROFIBERS, AS SPECIFIED BELOW
FIBER REINFORCEMENT FOR CONCRETE DRIVEWAY SHALL BE MATRIX MONOFILAMENT MICROFIBER AS MANUFACTURED BY FRC INDUSTRIES OR APPROVED EQUAL, APPLIED THROUGHOUT THE CONCRETE MIXTURE. ALTERNATE PRODUCTS MUST BE PREAPPROVED BY THE CITY ENGINEER IN WRITING. CELLULOSE (TREATED OR UNTREATED), AR GLASS, NYLON AND POLYESTER FIBERS ARE SPECIFICALLY PROHIBITED FROM USE.	



**3 PAVING PLAN**  
SCALE: 1" = 10'-0"



**4 PAVING PLAN**  
SCALE: 1" = 10'-0"

**DAMMON ENGINEERING, INC.**  
LOUISIANA & MISSISSIPPI

www.dammonengineering.com  
info@dammonengineering.com  
554 Old Spanish Trail  
Slidell, LA 70458  
PH: 985.449.9832

Chief Engineer: Brian Mistich, PE

REVISIONS	DATE	DESCRIPTION
1		



**FLEUR DE LIS FIT COMPANY**

DATE: 08-24-22  
DRAWN BY: BAW  
CHECKED BY: GCD

442 FREMAUX AVE  
SLIDELL, LA 70459

SHEET TITLE: SITE PLAN

DRAWING NUMBER: **C101**

SHEET No: 1 of 3