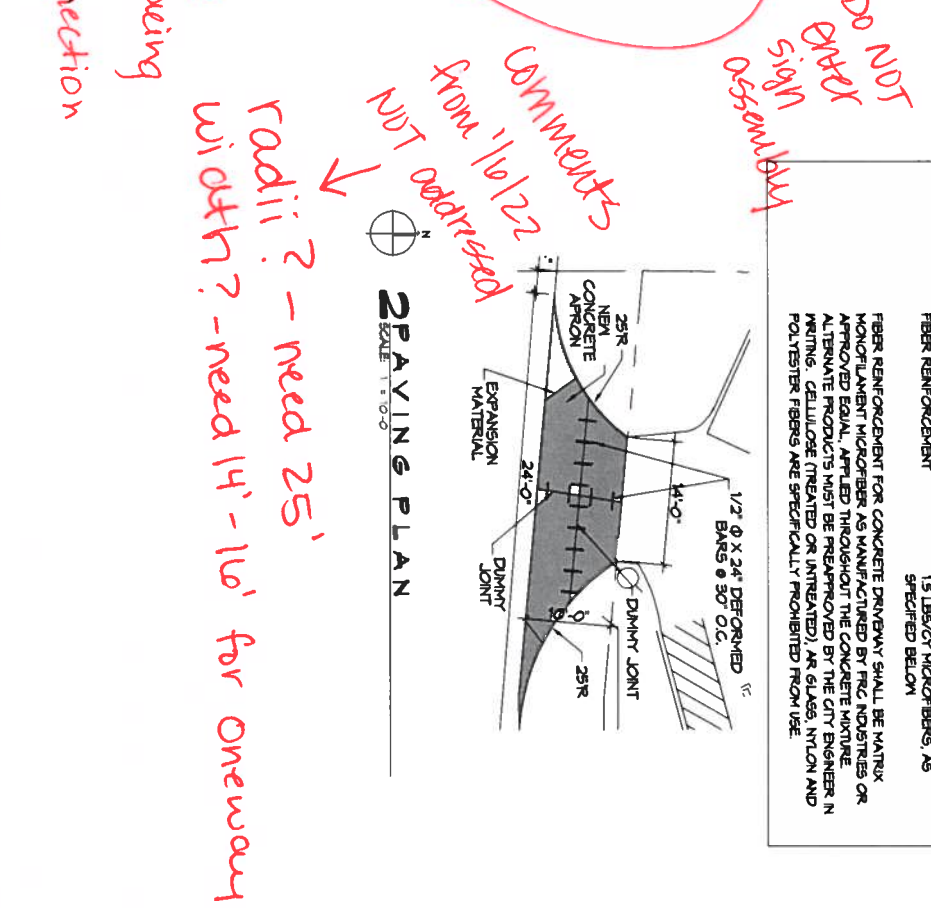
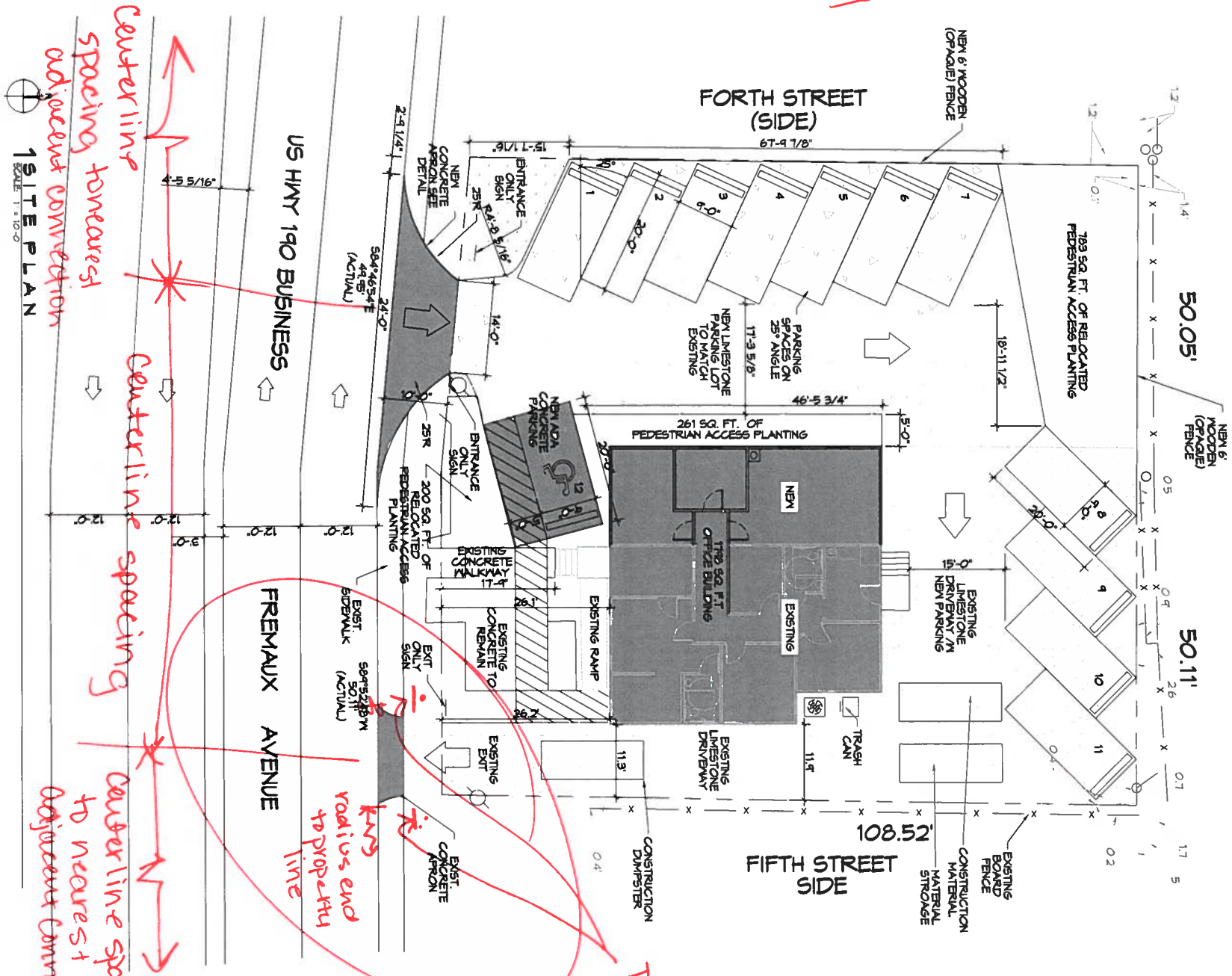


Traffic Pedlines 2/9/2022

Thumper
Sign assembly



GENERAL PAVING NOTES

CONCRETE MIX DESIGN MIX FOR ONE CUBIC YARD OF FIBER-REINFORCED CONCRETE

28 DAY STRENGTH	4000 PSI
CEMENT (ASTM C-150, TYPE I/II)	4.64 BAGS (436 LBS.)
FLY ASH (ASTM C-618)	1.16 BAGS (104 LBS.)
GRAVEL (ASTM C-39, GRADE A)	1175 LBS.
SAND (ASTM C-39)	1226 LBS.
WATER (PORTABLE)	90 GALLONS (250 LBS.) TYPE A
WATER REDUCER (ASTM C-494)	16.95 LBS.
AIR ENTRAINMENT	5% BY VOLUME USE PER MANUFACTURER'S SPECS.
FIBER REINFORCEMENT	1.5 LBS./CY MICROFIBERS, AS SPECIFIED BELOW

FIBER REINFORCEMENT FOR CONCRETE DRIVEWAY SHALL BE MATRIX MONOFILAMENT MICROFIBER AS MANUFACTURED BY FIC INDUSTRIES OR APPROVED EQUAL, APPLIED THROUGHOUT THE CONCRETE MIXTURE. ALTERNATE PRODUCTS MUST BE PRE-APPROVED BY THE CITY ENGINEER IN WRITING. CELLULOSE (TREATED OR UNTREATED), AR GLASS, NYLON AND POLYESTER FIBERS ARE SPECIFICALLY PROHIBITED FROM USE.

PLANNING	ENTER OR LIGHTING SHALL BE SHADDED OR UNSHADDED DIRECTED IN SUCH A MANNER SO THAT NO DIRECT LIGHTING OR GLARE BE CAST BEYOND THE PROPERTY LINE. THE INTENSITY OF SUCH LIGHTING SHALL NOT EXCEED 1.0 FOOT CANDLE AS MEASURED AT THE PROPERTY LINE.
FLOOD ZONE	
BUILDING ELEVATION	BASE FLOOR ELEVATION: 42' - 11.0' FINISHED FLOOR ELEVATION: 8.0'
PARKING	BUSINESS AND PROFESSIONAL OFFICES 1 SPACE FOR EACH 200 SQUARE FEET OF GROSS FLOOR AREA 178 / 200 = 1 PARKING REQUIRED = 1 ACTUAL PROVIDED = 12
SITE LIGHTING	

<p>DAMMON ENGINEERING, INC.</p> <p>LOUISIANA & MISSISSIPPI</p> <p>Chief Engineer: Brian Hestch, PE 554 Old Spanish Trail Slidell, LA 70458</p> <p>www.dammonengineering.com info@dammonengineering.com PH 985.649.5832</p>	<p>REVISIONS</p> <table border="1"> <tr> <th>#</th> <th>DESCRIPTION</th> <th>DATE</th> </tr> <tr> <td>1</td> <td></td> <td></td> </tr> </table>	#	DESCRIPTION	DATE	1			<p>STATE OF LOUISIANA</p> <p>Professional Engineer Seal</p>	<p>SHEET TITLE: PAVING PLAN</p> <p>DRAWING NUMBER: C101</p> <p>DATE: 12-20-2021</p> <p>DRAWN BY: CD</p> <p>CHECKED BY: BAN</p>
	#	DESCRIPTION	DATE						
1									
<p>1101 W. D. WILSON</p> <p>SLIDELL, LA 70458</p> <p>JOB No: DATE: 12-20-2021</p> <p>DRAWN BY: CD CHECKED BY: BAN</p>	<p>2 of 1</p>								