

**LIFE-SAFETY INFORMATION**

<b>APPLICABLE CODES</b>	
NFPA 101 LIFE-SAFETY CODE 2015	
OCCUPANCY TYPE(S) AND CHAPTER(S)	
BUSINESS (CHAPTER 38)	
MULTIPLE, MIXED, OR SEPARATE OCCUPANCY (REFERENCE CHAPTER 6)	
N/A	
<b>OCCUPANT LOAD FACTOR</b> (REFERENCE TABLE 7.3.1.2)	
2,335 SF / 100 SF PER OCCUPANT = 24 OCCUPANTS	
<b>CLASSIFICATION OF HAZARD OF CONTENTS</b>	
(REFERENCE: OCCUPANCY CHAPTER AND 6.2.2; SPECIFY LOW, ORDINARY, OR HIGH)	
<b>CONSTRUCTION TYPE(S)</b> (REFERENCE: CHAPTERS, TABLE A.9.2.1.2 AND COMMENTARY TABLE 8.1 IN HANDBOOK)	
TYPE II B	
<b>MINIMUM EXIT SEPARATION DISTANCE FOR REMOTELY LOCATED EXITS</b>	
(REFERENCE: SECTION 7.5; SPECIFY 1/2 OR 1/3 DIAGONAL DISTANCE OF AREA SERVED)	
1/3 DIAGONAL = 24'-10"	
<b>MAXIMUM DEAD-END CORRIDORS</b> (REFERENCE: OCCUPANCY CHAPTER AND TABLE A.7.6)	
50'	
<b>MAXIMUM COMMON PATH OF TRAVEL DISTANCE</b> (REFERENCE: OCCUPANCY CHAPTER AND TABLE A.7.6)	
100'	
<b>MAXIMUM TRAVEL DISTANCE TO EXITS</b> (REFERENCE: OCCUPANCY CHAPTER AND TABLE A.7.6)	
300'	
*MAIN ENTRANCE MUST BE SIGNED TO ACCOMMODATE 1/2 OCCUPANT LOAD OF BUILDING	
<b>EXTINGUISHMENT REQUIREMENTS</b>	NON SPRINKLERED
<b>DETECTION, ALARM, AND COMMUNICATION SYSTEMS</b>	YES, FIRE ALARM
<b>ALLOWABLE HEIGHT AND BUILDING AREA</b>	PER IBC EQUIVALENT CONSTRUCTION TYPE

**BUILDING CODE INFORMATION**

<b>APPLICABLE CODES</b>	
IBC 2015	
<b>BUSINESS GROUP B</b> (IBC 2012 CHAPTER 13)	
<b>OCCUPANT LOAD CALCULATIONS</b> (TABLE 1004.1.1)	
BUSINESS = 2,335 SQ FT 100 SF PER OCCUPANT (GROSS) 24 OCCUPANTS	
<b>CONSTRUCTION TYPE(S)</b> (TABLE 504)	
II B (SECTION 603 AND TABLE 601)	
<b>ALLOWABLE HEIGHT AND BUILDING AREA LIMITED BY TYPE OF CONSTRUCTION</b>	
MAXIMUM HEIGHT IN STORIES (SECTION 504.4) 2	
MAXIMUM AREA IN SQUARE FEET (SECTION 503, 506 & 507, TABLE 503) 9,000	

**WIND SPEED DESIGN REQUIREMENTS**

THIS BUILDING SHALL BE DESIGNED WITH IBC SEC 1609 AS A FULLY ENCLOSED BLDG USING THE FOLLOWING INFORMATION:

WIND DESIGN DATA:

DETERMINATION OF WIND LOADS SHALL BE IN ACCORDANCE WITH IBC SEC 1609.3 (1), (2), OR (3) DEPENDING ON THE RISK CATEGORY			
WIND SPEED V <sub>ult</sub> (3 SECOND GUST) =	142 MPH (IBC FIG 1609.3(1))		
NOMINAL DESIGN WIND SPEED V <sub>asd</sub> =	110 MPH ( V <sub>ult</sub> x (0.6) <sup>1/2</sup> )		
RISK CATEGORY:	CATEGORY II BLDG	SURFACE ROUGHNESS =	B
TOPOGRAPHIC FACTOR =	1	EXPOSURE =	B
COMPONENTS AND CLADDING PRESSURE (ASCE 7-10 TABLE 28.6-1):	31.7 PSF		
INTERNAL PRESSURE COEFFICIENT (ASCE 7-10 TABLE 26.11-1):	± 0.18		
LIVE LOADS (IBC SEC 1607)			
OFFICE LOBBIES & CORRIDORS 1ST FLOOR (IBC TABLE 1607.1):	100 PSF		
OFFICES (IBC TABLE 1607.1):	50 PSF		
ROOF LIVE LOADS (IBC TABLE 1607.1):	20 PSF UNIFORM, 300 LB CONCENTRATED		
SNOW LOADS (IBC SEC 1609.2):			
GROUND SNOW LOAD (IBC FIG 1609.2):	5 PSF		

**FLOOD ZONE INFORMATION**

BASED ON THE LSU AGRICULTURE FLOOD MAP THIS PROPERTY IS IN A FLOOD ZONE

FIRM, COMMUNITY NO. 22103C0495F DATE: 04/30/2008

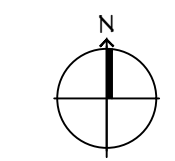
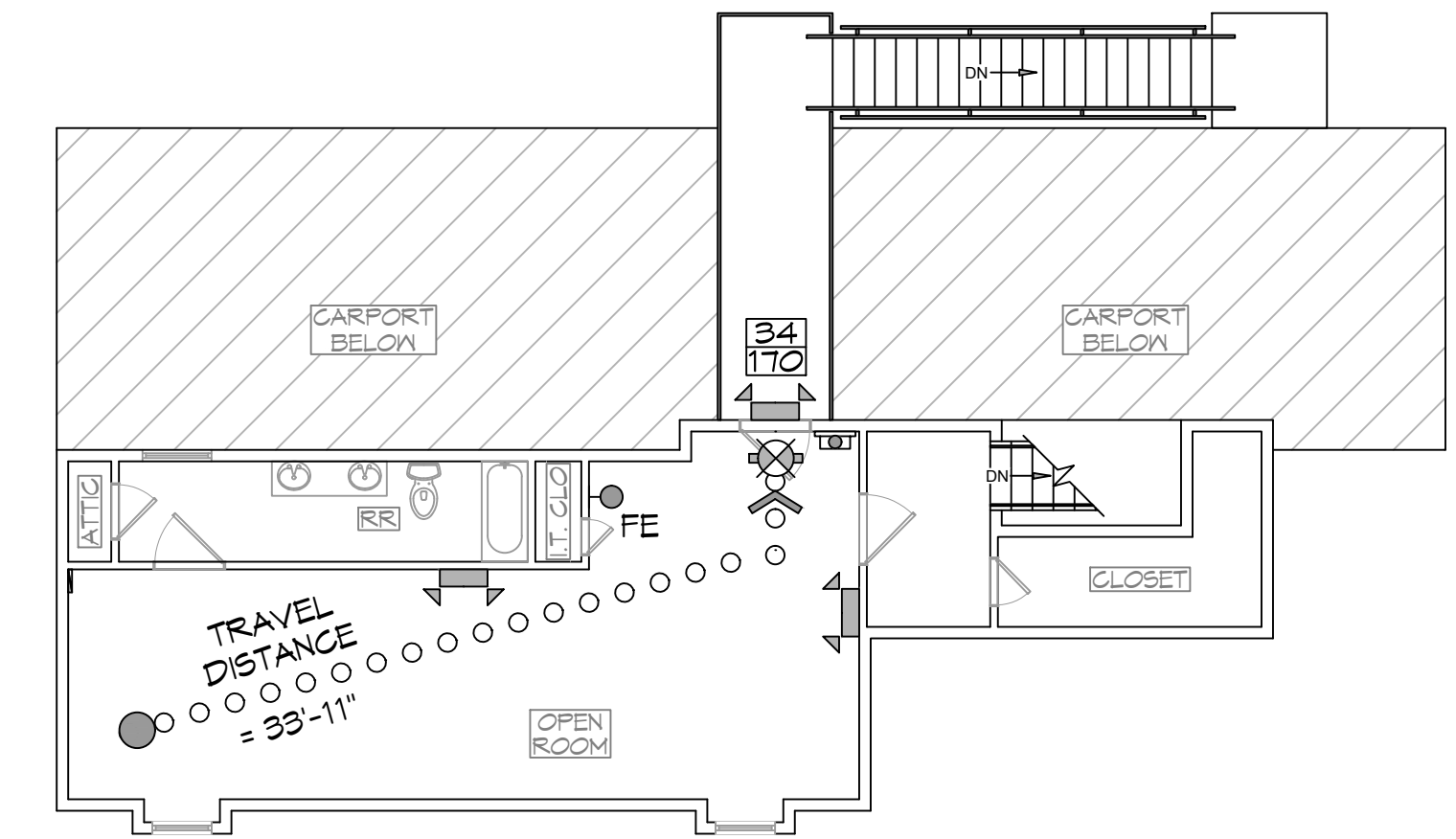
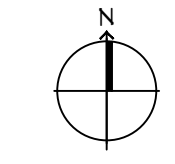
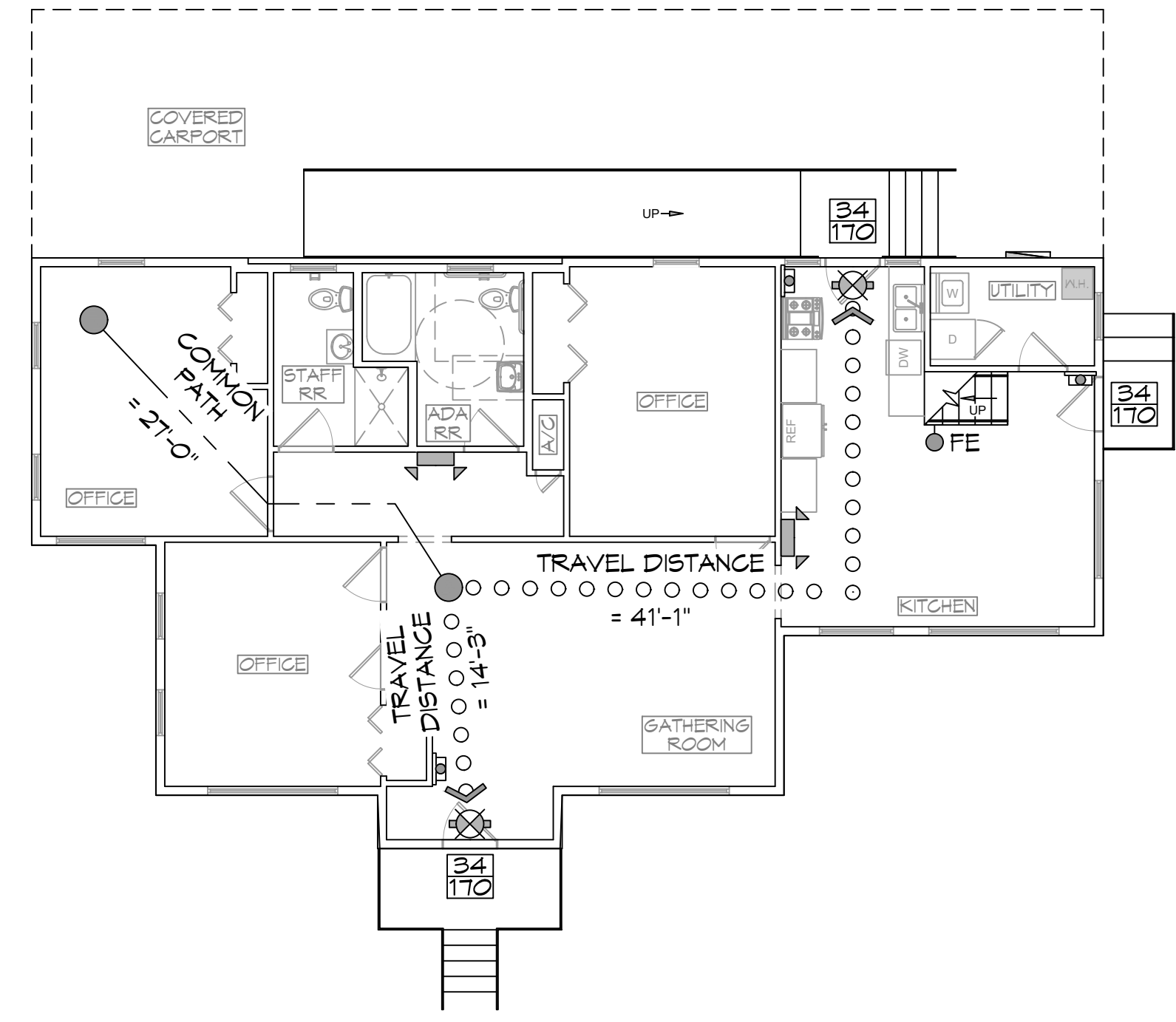
FLOOD ZONE: AE BASE FLOOD ELEVATION EL 11

**LIFE-SAFETY LEGEND**

SYMBOL	DESCRIPTION
	EXITS
	FIRE ALARM PULL STATION
	DOOR WIDTH/EGRESS CAPACITY
	EXIT LIGHT
	FIRE EXTINGUISHER W/ WALL MTD BRACKET
	COMMON PATH OF TRAVEL
	TRAVEL DISTANCE
	DECISION POINT

**PROJECT DESCRIPTION**

THIS IS AN EXISTING WOOD FRAME TWO STORY OFFICE BUILDING, 1952 ERA, CONSISTING OF 2335 SQ. FT. WITH FULL FIRE ALARM AND ADA RAMPS.



**VICINITY MAP**



**SHEET INDEX**

SHEET #	SHEET TITLE
G101	GENERAL INFORMATION SHEET
C101	EXISTING SITE PLAN
A101	EXISTING FLOOR PLAN
A102	ADA RAMP & STAIR PLAN

**DAMMON ENGINEERING, INC.**  
LOUISIANA & MISSISSIPPI

Chief Engineer: Brian Mistich, PE  
554 Old Spanish Trail  
Slidell, LA 70458  
www.dammonengineering.com  
info@dammonengineering.com  
PH: 985.649.5832

REVISIONS	DATE	DESCRIPTION



**EXISTING BUILDING COLLECTIVE**

940 BRAKEFIELD ST  
SLIDELL, LA 70458

JOB NO.:  
DATE: 08-31-2022  
DRAWN BY: CKD  
CHECKED BY: JMS

SHEET TITLE:  
GENERAL INFORMATION SHEET

DRAWING NUMBER:  
**G101**

SHEET No: 1 of 4