

LIFE-SAFETY INFORMATION

APPLICABLE CODES	
NFPA 101 LIFE-SAFETY CODE 2015	
OCCUPANCY TYPE(S) AND CHAPTER(S)	
BUSINESS (CHAPTER 38)	
MULTIPLE, MIXED, OR SEPARATE OCCUPANCY (REFERENCE CHAPTER 6)	
N/A	
OCCUPANT LOAD FACTOR (REFERENCE TABLE 7.3.1.2)	
2,335 SF / 100 SF PER OCCUPANT = 24 OCCUPANTS	
CLASSIFICATION OF HAZARD OF CONTENTS	
(REFERENCE: OCCUPANCY CHAPTER AND 6.2.2; SPECIFY LOW, ORDINARY, OR HIGH)	
CONSTRUCTION TYPE(S) (REFERENCE: CHAPTERS, TABLE A.9.2.1.2 AND COMMENTARY TABLE 8.1 IN HANDBOOK)	
TYPE II B	
MINIMUM EXIT SEPARATION DISTANCE FOR REMOTELY LOCATED EXITS	
(REFERENCE: SECTION 7.5; SPECIFY 1/2 OR 1/3 DIAGONAL DISTANCE OF AREA SERVED)	
1/3 DIAGONAL = 24'-10"	
MAXIMUM DEAD-END CORRIDORS (REFERENCE: OCCUPANCY CHAPTER AND TABLE A.7.6)	
50'	
MAXIMUM COMMON PATH OF TRAVEL DISTANCE (REFERENCE: OCCUPANCY CHAPTER AND TABLE A.7.6)	
100'	
MAXIMUM TRAVEL DISTANCE TO EXITS (REFERENCE: OCCUPANCY CHAPTER AND TABLE A.7.6)	
300'	
*MAIN ENTRANCE MUST BE SIGNED TO ACCOMMODATE 1/2 OCCUPANT LOAD OF BUILDING	
EXTINGUISHMENT REQUIREMENTS	NON SPRINKLERED
DETECTION, ALARM, AND COMMUNICATION SYSTEMS	YES, FIRE ALARM
ALLOWABLE HEIGHT AND BUILDING AREA	PER IBC EQUIVALENT CONSTRUCTION TYPE

BUILDING CODE INFORMATION

APPLICABLE CODES	
IBC 2015	
BUSINESS GROUP B (IBC 2012 CHAPTER 13)	
OCCUPANT LOAD CALCULATIONS (TABLE 1004.1.1)	
BUSINESS = 2,335 SQ FT 100 SF PER OCCUPANT (GROSS) 24 OCCUPANTS	
CONSTRUCTION TYPE(S) (TABLE 504)	
II B (SECTION 603 AND TABLE 601)	
ALLOWABLE HEIGHT AND BUILDING AREA LIMITED BY TYPE OF CONSTRUCTION	
MAXIMUM HEIGHT IN STORIES (SECTION 504.4) 2	
MAXIMUM AREA IN SQUARE FEET (SECTION 503, 506 & 507, TABLE 503) 9,000	

WIND SPEED DESIGN REQUIREMENTS

THIS BUILDING SHALL BE DESIGNED WITH IBC SEC 1604 AS A FULLY ENCLOSED BLDG USING THE FOLLOWING INFORMATION:

WIND DESIGN DATA:

DETERMINATION OF WIND LOADS SHALL BE IN ACCORDANCE WITH IBC SEC 1609.3 (1), (2), OR (3) DEPENDING ON THE RISK CATEGORY			
WIND SPEED V _{ult} (3 SECOND GUST)	142 MPH (IBC FIG 1609.3(1))		
NOMINAL DESIGN WIND SPEED V _{asd}	110 MPH (V _{ult} x (0.6) ^{1/2})		
RISK CATEGORY:	CATEGORY II BLDG	SURFACE ROUGHNESS =	B
TOPOGRAPHIC FACTOR =	1	EXPOSURE =	B
COMPONENTS AND CLADDING PRESSURE (ASCE 7-10 TABLE 28.6-1):	31.7 PSF		
INTERNAL PRESSURE COEFFICIENT (ASCE 7-10 TABLE 26.11-1):	± 0.18		
LIVE LOADS (IBC SEC 1607)			
OFFICE LOBBIES & CORRIDORS 1ST FLOOR (IBC TABLE 1607.1):	100 PSF		
OFFICES (IBC TABLE 1607.1):	50 PSF		
ROOF LIVE LOADS (IBC TABLE 1607.1):	20 PSF UNIFORM, 300 LB CONCENTRATED		
SNOW LOADS (IBC SEC 1609.2):			
GROUND SNOW LOAD (IBC FIG 1609.2):	5 PSF		

FLOOD ZONE INFORMATION

BASED ON THE LSU AGRICULTURE FLOOD MAP THIS PROPERTY IS IN A FLOOD ZONE

FIRM, COMMUNITY NO. 22103C0495F DATE: 04/30/2008

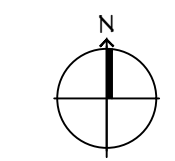
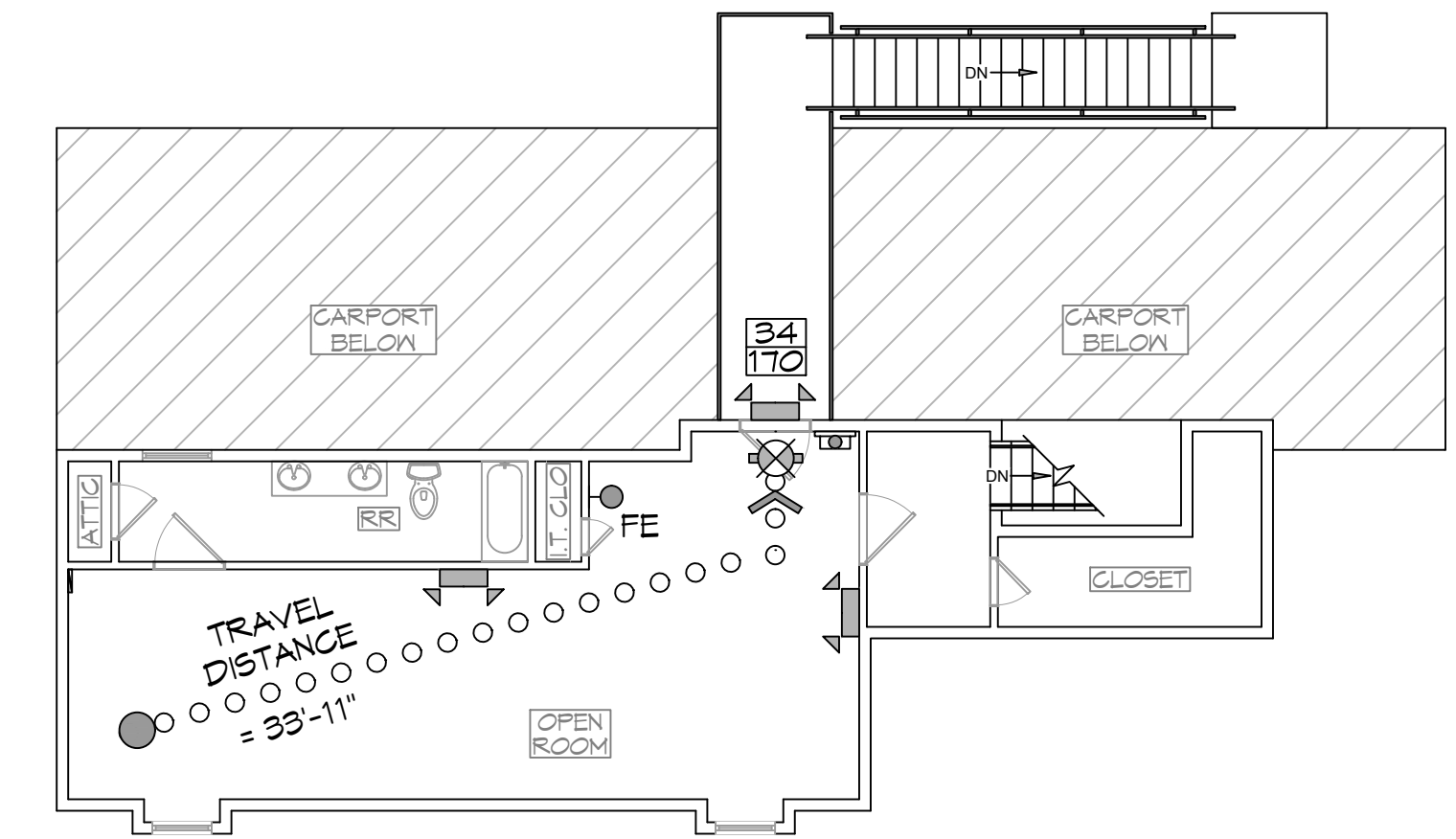
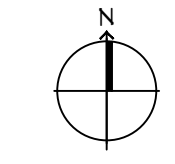
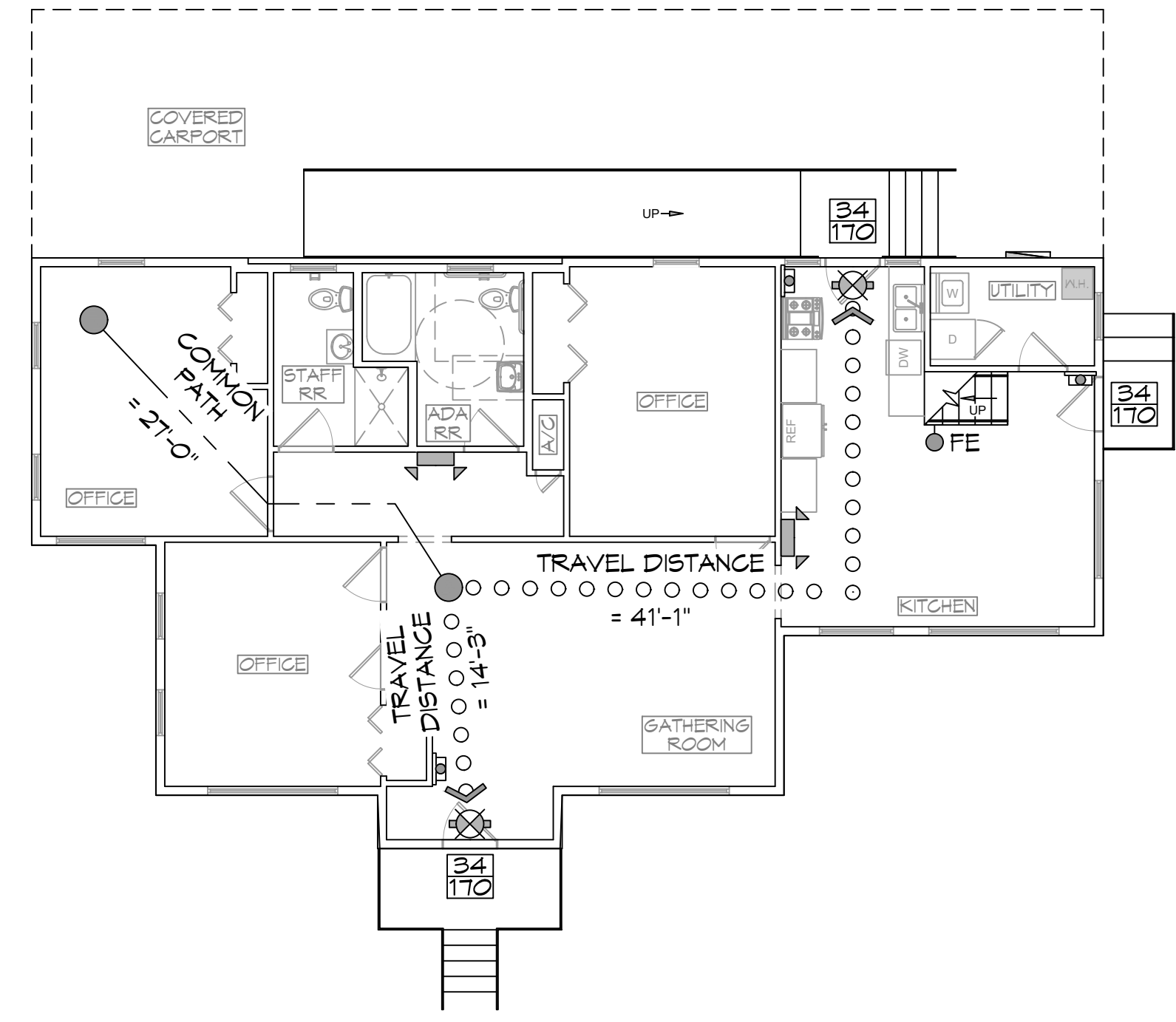
FLOOD ZONE: AE BASE FLOOD ELEVATION EL 11

LIFE-SAFETY LEGEND

SYMBOL	DESCRIPTION
	EXITS
	FIRE ALARM PULL STATION
	DOOR WIDTH/EGRESS CAPACITY
	EXIT LIGHT
	FIRE EXTINGUISHER W/ WALL MTD BRACKET
	COMMON PATH OF TRAVEL
	TRAVEL DISTANCE
	DECISION POINT

PROJECT DESCRIPTION

THIS IS AN EXISTING WOOD FRAME TWO STORY OFFICE BUILDING, 1952 ERA, CONSISTING OF 2335 SQ. FT. WITH FULL FIRE ALARM AND ADA RAMPS.



VICINITY MAP



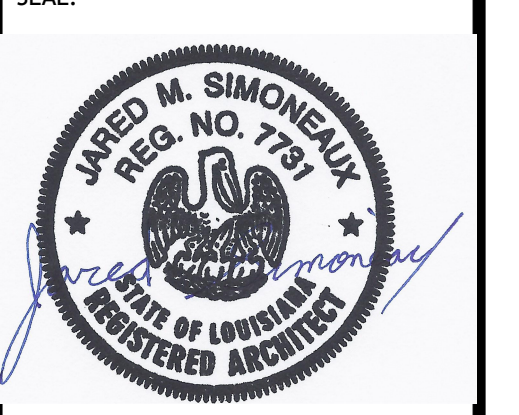
SHEET INDEX

SHEET #	SHEET TITLE
G101	GENERAL INFORMATION SHEET
C101	EXISTING SITE PLAN
A101	EXISTING FLOOR PLAN
A102	ADA RAMP & STAIR PLAN

DAMMON ENGINEERING, INC.
LOUISIANA & MISSISSIPPI

Chief Engineer: Brian Alstich, PE
554 Old Spanish Trail
Slidell, LA 70458
www.dammonengineering.com
info@dammonengineering.com
PH: 985.649.5832

REVISIONS	DATE	DESCRIPTION



EXISTING BUILDING
GRACE MIDDLE COLLECTIVE

340 BRAKEFIELD ST
SLIDELL, LA 70458
JOB NO: 2022-08-31-2022
DATE: 08-31-2022
DRAWN BY: CKD
CHECKED BY: JMS

SHEET TITLE:
GENERAL INFORMATION SHEET

DRAWING NUMBER:
G101

SHEET No: 1 of 4

