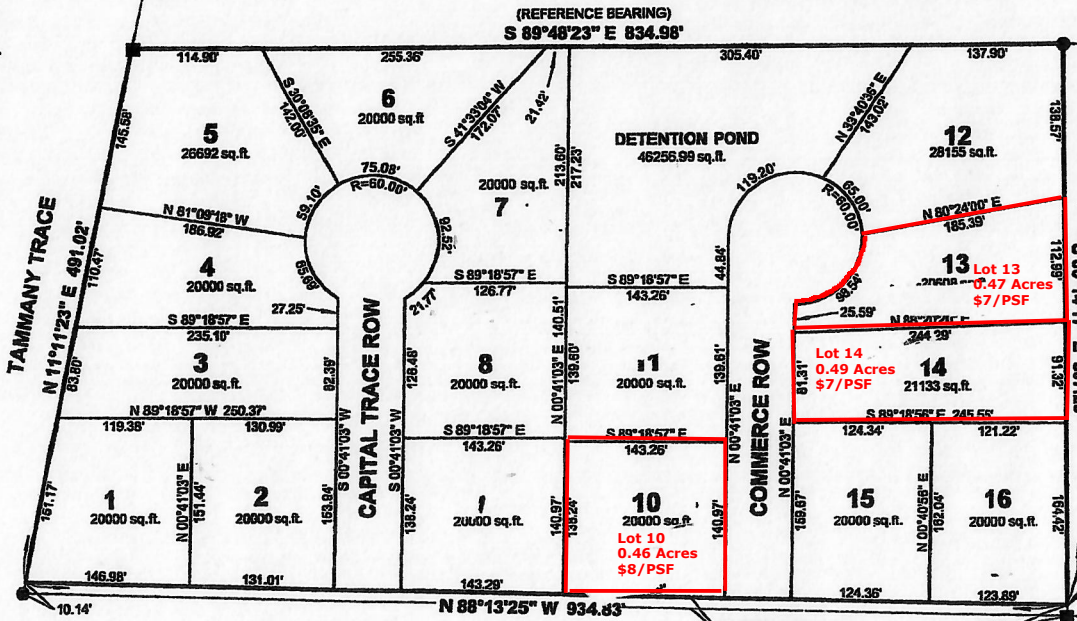


**KOOP OFFICE PARK**  
10.05 ACRES  
SECTION 24, T-7-S, R-11-E  
ST. TAMMANY PARISH, LOUISIANA



STREET	DEDICATION		CORRECTION	
	INSTRUMENT NUMBER	DATE	INSTRUMENT NUMBER	DATE
1. KOOP DRIVE	641236	DEC. 15, 1986		
2. 10' STRIP NORTH OF KOOP DR.	1454471	MAR. 31, 2004		

This point located North 00 degrees 10 minutes 22 seconds East a distance of 794.52 feet; thence North 88 degrees 13 minutes 25 seconds West a distance of 259.58 feet; thence North 00 degrees 14 Minutes 17 seconds West a distance of 10.01 feet from corner common to Sections 24 and 25, Township 7 South, Range 11 East and Sections 19 and 30, Township 7 South, Range 12 East, G.L.D., St. Tammany Parish, Louisiana.

L.A. HWY. 59

- REFERENCES:
1. PLAT OF KOOP OFFICE PARK, FILED 1-26-2005, MAP FILE NO. 3745.
  2. REVISION TO PLAT RESTRICTIVE COVENANTS, INST. NO. 1478631.
  3. ACT OF CORRECTION TO RESTRICTIVE COVENANTS, INST. NO. 1476312.

**LEGAL DESCRIPTION**

A certain parcel of land situated in Section 24, Township 7 South, Range 11 East, St. Tammany Parish, Louisiana and more particularly described as follows:  
Commence at the corner common to Sections 24 and 25, Township 7 South, Range 11 East and Sections 19 and 30, Township 7 South, Range 12 East and measure North 00 degrees 10 minutes 22 seconds East a distance of 794.52 feet; thence North 88 degrees 13 minutes 25 seconds West a distance of 259.58 feet; thence North 00 degrees 14 minutes 17 seconds West a distance of 10.01 feet to the POINT OF BEGINNING.  
From the POINT OF BEGINNING run North 88 degrees 13 minutes 25 seconds West a distance of 934.83 feet; thence North 11 degrees 11 minutes 23 seconds East a distance of 491.02 feet; thence South 89 degrees 48 minutes 23 seconds East a distance of 834.98 feet; thence South 00 degrees 14 minutes 17 seconds East a distance of 507.29 feet to the POINT OF BEGINNING, and containing 10.05 acres, more or less.

**KOOP DRIVE**  
10' STRIP DEDICATED FOR KOOP DR.

- LEGEND**
- = 1/2" IRON PIPE FOUND
  - = 1/2" IRON ROD FOUND

WE CERTIFY THAT THIS MAP REPRESENTS A BEARING ROTATION FOR THE BOUNDARY AND ALL OF THE LOTS AND THE S.O.B. HAS CHANGED. ALL OF THE DISTANCES AND THE SQUARE FOOTAGES OF THE LOTS ARE UNCHANGED.

KELLY J. McHUGH REG. NO. 4443  
 CERTIFIED CORRECT AND IN ACCORDANCE WITH A PHYSICAL SURVEY MADE ON THE GROUND AND COMPLYING WITH THE CURRENT APPLICABLE STANDARDS OF PRACTICE FOR A CLASS "C" SURVEY. RED STAMP SIGNIFIES CORRECT PLAT.

<b>KOOP OFFICE PARK</b>		
10.05 ACRES		
SECTION 24, T-7-S, R-11-E		
ST. TAMMANY PARISH, LOUISIANA		
KELLY J. McHUGH & ASSOC., INC.		
CIVIL ENGINEERS & LAND SURVEYORS		
845 GALVEZ ST., MANDEVILLE, LA. 826-5611		
SCALE: 1" = 100'	DATE: 05/02/2011	
DRAWN: R.F.O.	JOB NO.: 10-261-KOOP	
REVISED: 05/17/2011		