

DAMMON ENGINEERING, INC.
 CHIEF ENGINEER
 ENNETT DAMMON, P.E.
 CHIEF ARCHITECT
 ROBERT WILTSE

1095 FLORIDA AVENUE
 SLIDELL, LA, 70458
 OFFICE: 985-649-5832
 FAX: 985-641-5950

WEBSITE:
 WWW.DAMMONENGINEERING.COM
 EMAIL:
 DAMMONENG@BELL-SOUTH.NET

ARCHITECTURE
 ENGINEERING
 STUDIES
 PLANNING
 INVESTIGATION
 EXPERT WITNESSES

ROTOLO CONSULTANTS, INC.
 894 ROBERT BLVD.
 SLIDELL, LA

YMCA POOL
 BOOTHVILLE
 LOUISIANA

POOL PILING
 PLAN AND
 SECTIONS

REV:

SCALE: AS NOTED

JOB#:

DATE: 5-26-10

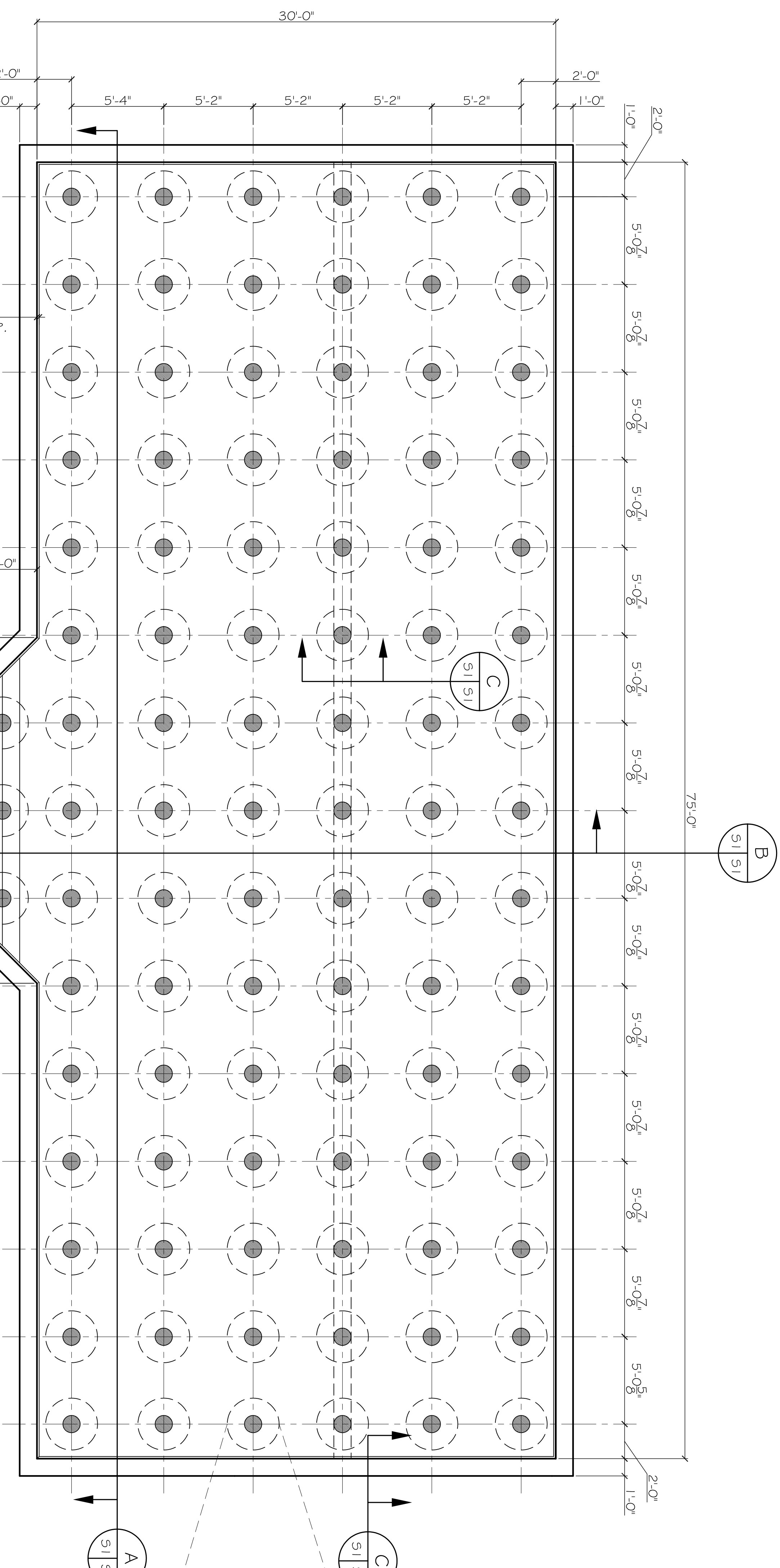
SHEET 1

S-1

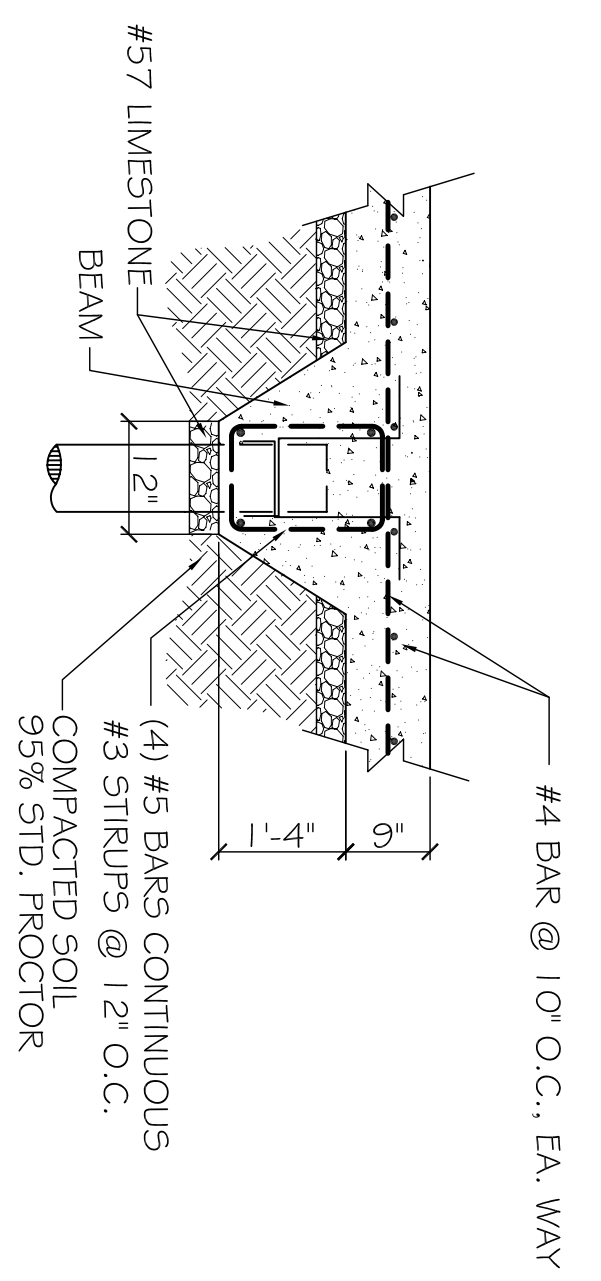
OF 1

NOTES:

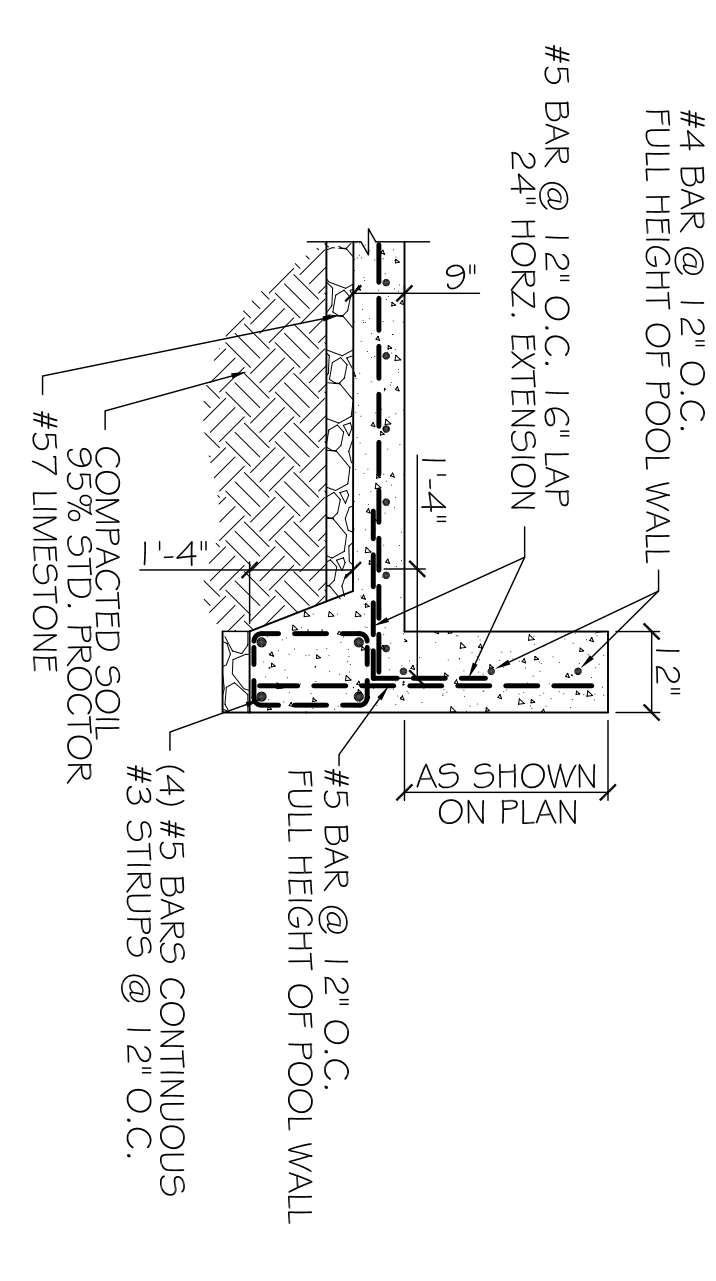
1. CONTRACTOR SHALL FIELD VERIFY ALL DIMENSIONS & DEPRESSIONS PRIOR TO COMMENCING WORK.
2. FOLLOW FILE DATA FROM ENGINEERING SOILS STUDY DATED FEBRUARY 28, 2008
3. USE ASTM D-25 QUALITY PILES: 7" TIP, 12" BUTT, 5 TON CAPACITY. DRIVEN TO 40 FT. BELOW EXISTING NATURAL GROUND ELEV.
4. NO FIELD SUPERVISION OR INSPECTION PROVIDED UNDER THIS SEAL UNLESS NOTED OTHERWISE.
5. PILE LAYOUT MAY BE MODIFIED DUE TO ACTUAL DRIVING CONDITIONS. ENGINEER TO BE NOTIFIED ON ANY OTHER MODIFICATION.
6. A PILE BLOW COUNT LOG OF ALL PILES SHALL BE SUBMITTED TO THE ENGINEER OF RECORD.
7. CONTRACTOR IS RESPONSIBLE FOR THE COMPARISON AND VERIFICATION OF PILE LAYOUT DIMENSIONS WITH MOST RECENT EQUIPMENT DRAWINGS, ASSURING THAT PILES DO FALL WITHIN LIMITS OF THE DESIGN.
8. ALL WATER (RAIN, RISING WATER, ETC.) SHALL BE DIRECTED AWAY FROM THE FOUNDATIONS DURING PREPARATION, PLACING AND CURING OF SAME. POSITIVE DRAINAGE MUST BE MAINTAINED AT ALL TIMES.
9. SEE "ENGINEERING SOIL ANALYSIS AND FOLLOW RECOMMENDATIONS OF STUDY".
10. MONITOR VIBRATIONS AT NEARBY BUILDINGS.



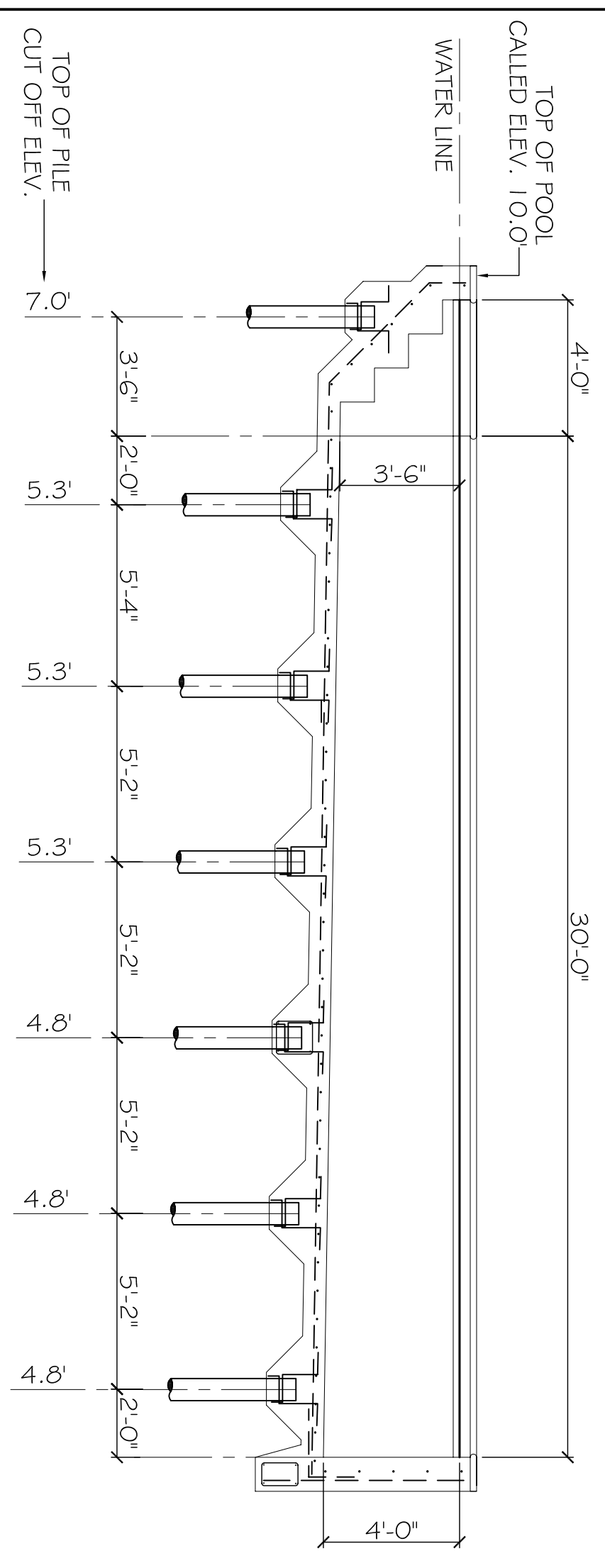
POOL PLAN
 SCALE: 1/4"=1'-0"
 93 PILES



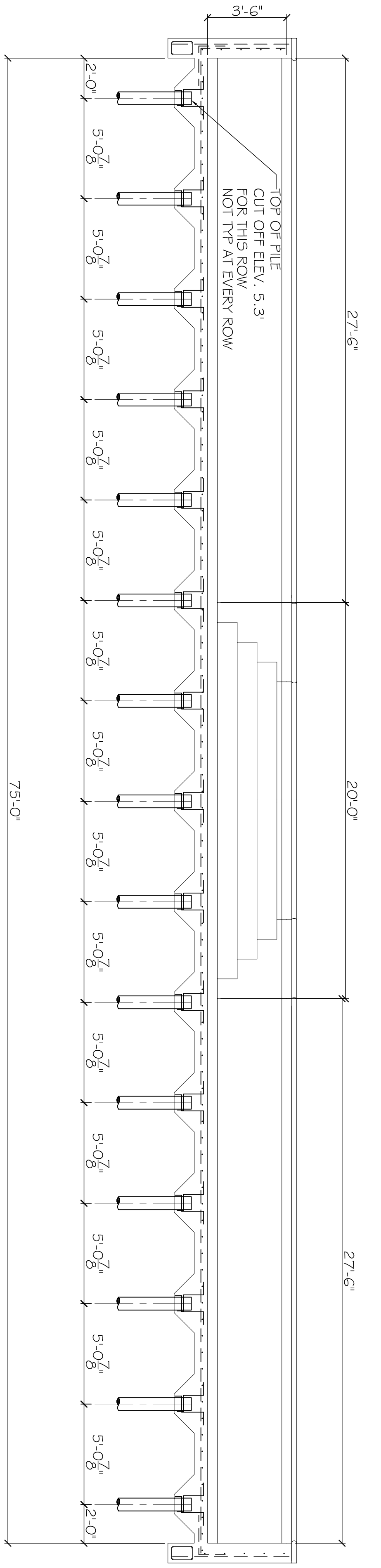
TYP. SECTION C
 N.T.S.



TYP. DETAIL D
 N.T.S.



SECTION B
 N.T.S.



SECTION A
 N.T.S.