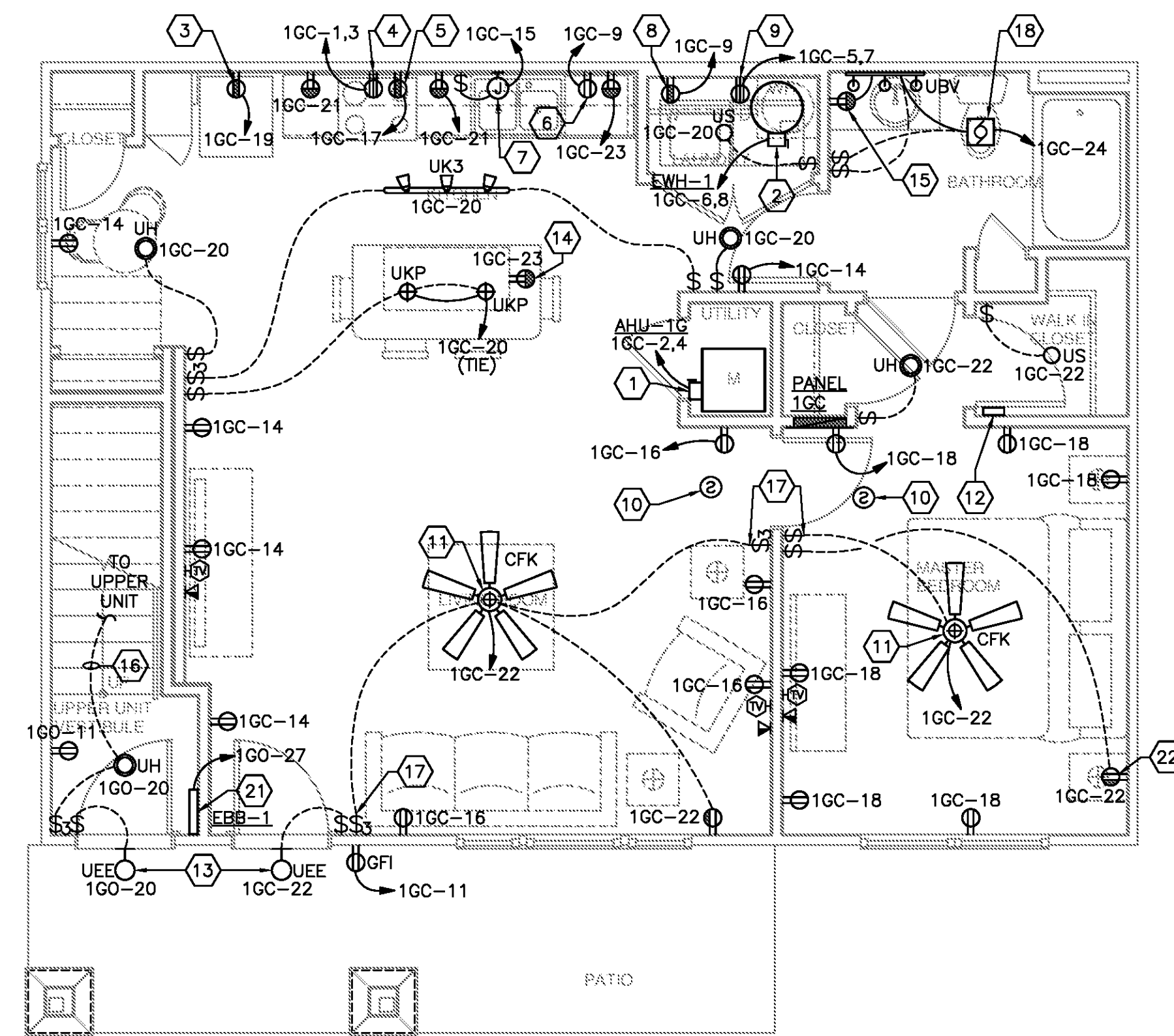
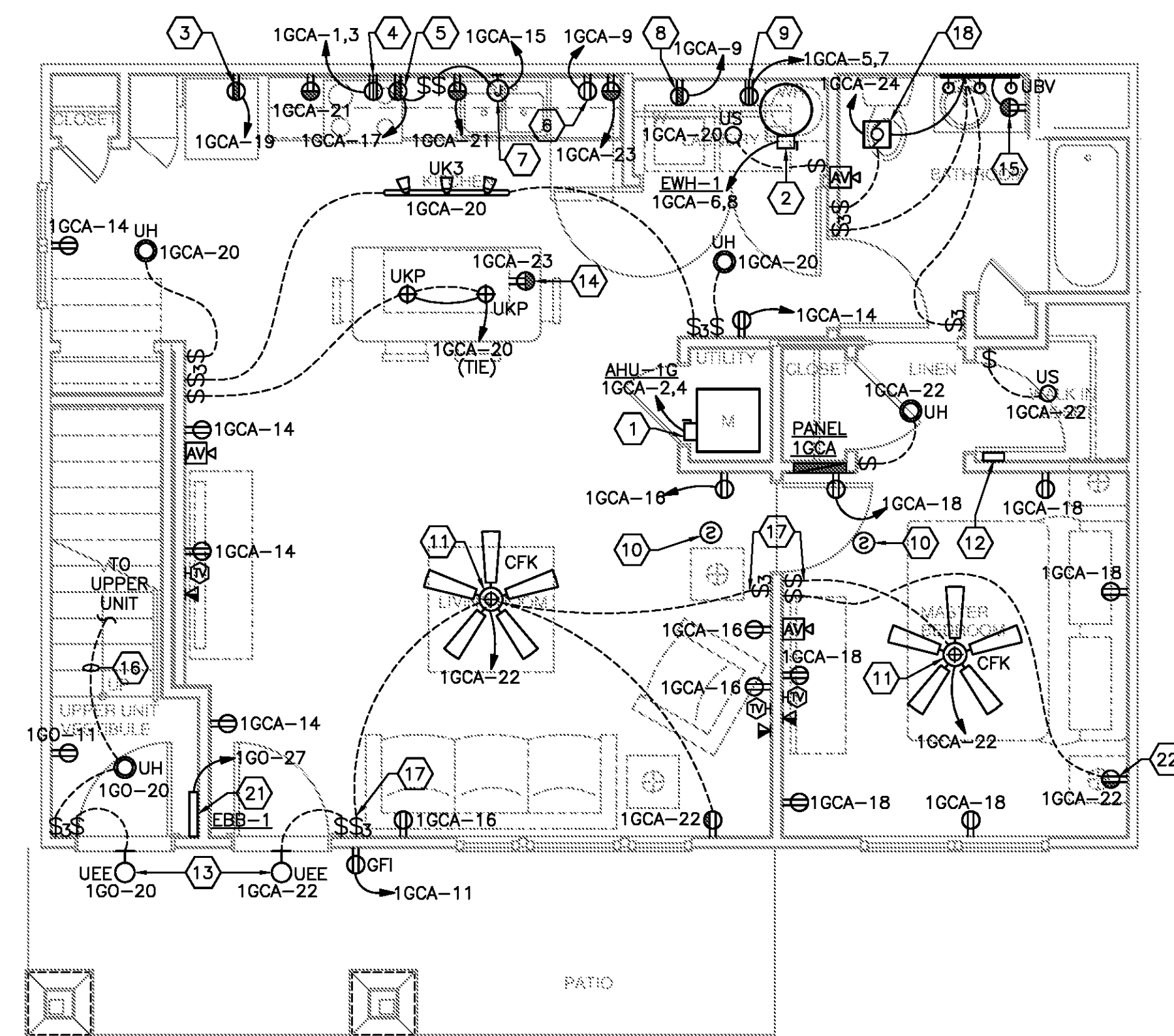


DWELLING LOAD CALCULATION

Unit 1GC	SQ FT =	816
GENERAL LOAD		
GENERAL LIGHTING AND RECEPTACLE	3 VA PER SQ FT	2448 VA
SMALL APPLIANCE / LAUNDRY	3 1500VA EACH	4500 VA
DRYER		5600 VA
WATER HEATER		4500 VA
ELECTRIC RANGE		9600
	SUBTOTAL	26648 VA
	FIRST 3KVA @ 100%	3000 VA
	REMAINDER @ 40%	9459 VA
	SUBTOTAL	12459 VA
	HVAC @100%	6400 VA
	TOTAL	18859 VA
	TOTAL/240V =	79 AMPS



UNIT - 1GC
1/4" = 1'-0"



UNIT - 1GCA
1/4" = 1'-0"

GENERAL NOTES

- ELECTRICAL OUTLETS OR BOXES LOCATED ON OPPOSITE SIDES OF RATED WALLS OR PARTITIONS SHALL MEET ONE OF THE FOLLOWING CRITERIA:
- BOXES SHALL BE SEPARATED BY A HORIZONTAL DISTANCE OF NOT LESS THAN 24".
 - BOXES SHALL BE SURROUNDED ON 5 SIDES WITH FIRE RATED GYPSUM BOARD TO MAINTAIN THE FIRE RATING OF THE WALL.
 - BACK OF BOXES SHALL BE WRAPPED IN FIRE RESISTANT PUTTY SIMILAR TO SPEC-SEAL FIRE RATED PUTTY PADS.
 - PROVIDE 2 HOUR RATED BACK BOXES AND OFFSET BY THE WIDTH OF THE BOX.

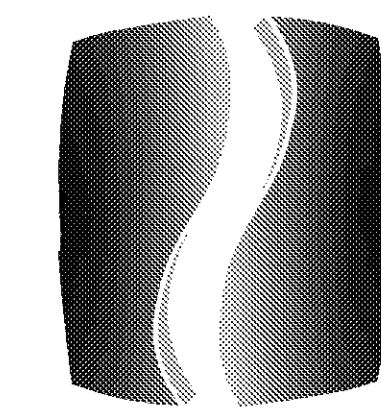
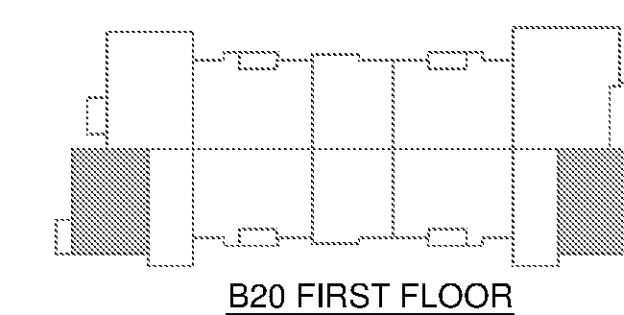
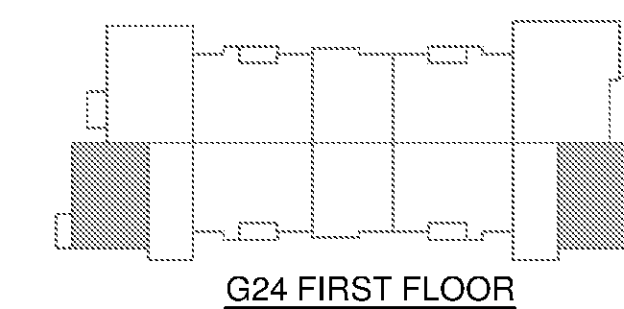
KEYED NOTES

- AIR HANDLING UNIT CONNECTION.
- WATER HEATER CONNECTION LOCATED ABOVE DRYER.
- REFRIGERATOR CONNECTION MOUNT @ 60" AFF.
- RANGE CONNECTION.
- MICROWAVE/HOOD CONNECTION. MOUNT @ 76" AFF.
- DISHWASHER CONNECTION.
- GARBAGE DISPOSAL CONNECTION
- WASHER CONNECTION. MOUNT @ 48" AFF.
- DRYER CONNECTION. MOUNT @ 48" AFF. PROVIDE 4 WIRE RECEPTACLE.
- CONNECT SMOKE DETECTOR AND COMBINATION CARBON MONOXIDE SENSOR/SMOKE DETECTOR AHEAD OF ALL SWITCHING AND GFI DEVICES. MAINTAIN 36" CLEARANCE FROM HVAC SUPPLY GRILLES. TIE ALL DETECTORS TOGETHER SO THAT AN ALARM IN ANY DETECTOR WILL CAUSE ALL DETECTORS IN THAT UNIT TO SOUND. PROVIDE ADDRESSABLE SMOKE DETECTOR WITH SOUNDER BASE TO PROVIDE NFPA 72 SOUND PRESSURE LEVEL.
- ELECTRICAL CONTRACTOR TO PROVIDE AND INSTALL CEILING FAN. SEE LIGHT FIXTURE SCHEDULE.
- CABINET FOR COLLECTION OF TELEPHONE, DATA AND TELEVISION WIRING FROM OUTLETS WITHIN THE UNIT. MOUNT AT 8'-0" A.F.F.
- CONNECT VIA SWITCH TO APPROPRIATE UNIT.
- MOUNT BROWN RECEPTACLE WITH BROWN PLATE 8" BELOW TOP OF COUNTER TO BOTTOM.
- GFI MOUNTED 8" ABOVE COUNTER IN BATHROOM.
- CONNECT ALL DEVICES IN THIS FOYER TO ASSOCIATED 2ND FLOOR UNIT.
- PROVIDE SWITCH FOR CEILING FAN CONTROL. PROVIDE FOR 3-WAY OR 4-WAY CONTROL OF LIGHT WHERE APPLICABLE.
- EXHAUST FAN IN BATHROOM. CONNECT TO LIGHTING CIRCUIT.
- PROVIDE FAN RATED BOX WITH BLANK COVER FOR FUTURE FAN OR LIGHTING FIXTURE. PROVIDE CEILING FAN TYPE "CF" IN CONCERGE UNITS OR AS NOTED ON ARCHITECTURAL DRAWINGS.
- PROVIDE POWER CONNECTION TO ELECTRIC BASEBOARD HEATER INSTALLED IN VESTIBULE BY DIV 15. POWER FROM RESPECTIVE TENANT PANEL.
- CONNECT THE BOTTOM HALF OF OUTLET TO SWITCH.

ALL ELECTRICAL DESIGN AND INSTALLATION SHALL COMPLY WITH 2011 NEC.

ALL GENERAL RECEPTACLES REQUIRED BY NEC 210.52 SHALL BE TAMPER-RESISTANT.

UPGRADED LIGHT FIXTURES "UCK" AND "UCP" TO BE INSTALLED IN ALL CONCERGE UNITS OR AS NOTED ON ARCHITECTURAL DRAWINGS.



PHILLIPS

Phone 770.394.1616 Fax 770.394.1314

CONSULTANT



SEAL

ISSUE & REVISION RECORD

#	DATE	DESCRIPTION
	07/07/14	BID SET

This document is the property of Phillips Partnership, PC and is intended as an instrument of service and is loaned for use with respect to the project as indicated below. All rights reserved. This document may not be reproduced without the prior written consent of Phillips Partnership, PC.

PROJECT

SPRINGS AT FREMAUX TOWN CENTER
SLIDELL, LA

CLIENT

CONTINENTAL PROPERTIES
CONTINENTAL 294 FUND LLC
134 N8875 EXECUTIVE PARKWAY
MENOMONEE FALLS, WI 53051
262.502.5500 • FAX 262.502.5522

PHILLIPS JOB NUMBER 1333104

ISSUE DATE 07/07/14

DRAWN BY/CHECKED BY KMK/JDP

DRAWING TITLE

**UNIT 1GC:
POWER AND LIGHTING PLANS**

SHEET NUMBER
E4.1GC

NORTH TERRACES
400 PERIMETER CENTER TERRACE
SUITE 650
ATLANTA, GEORGIA 30346