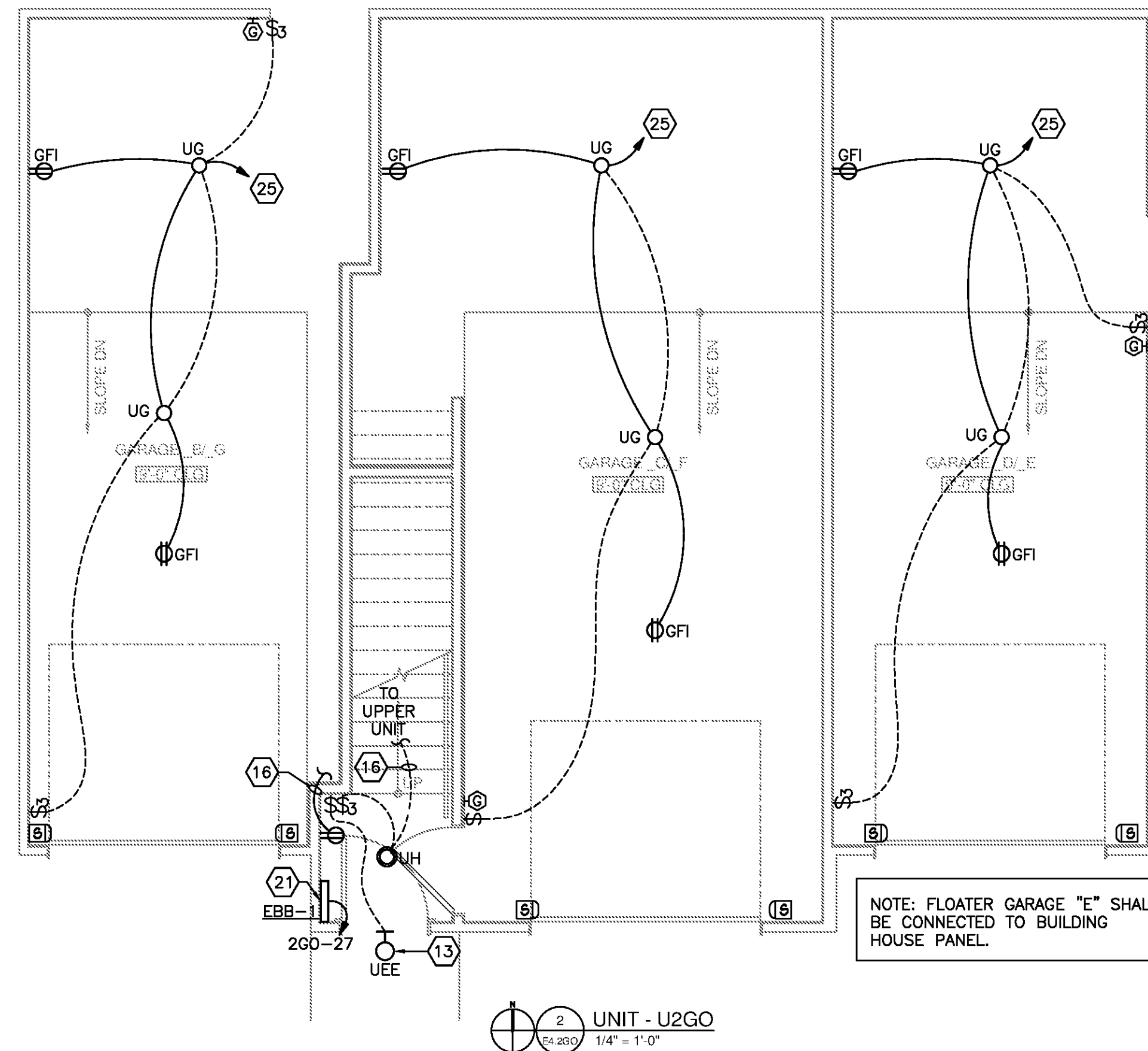
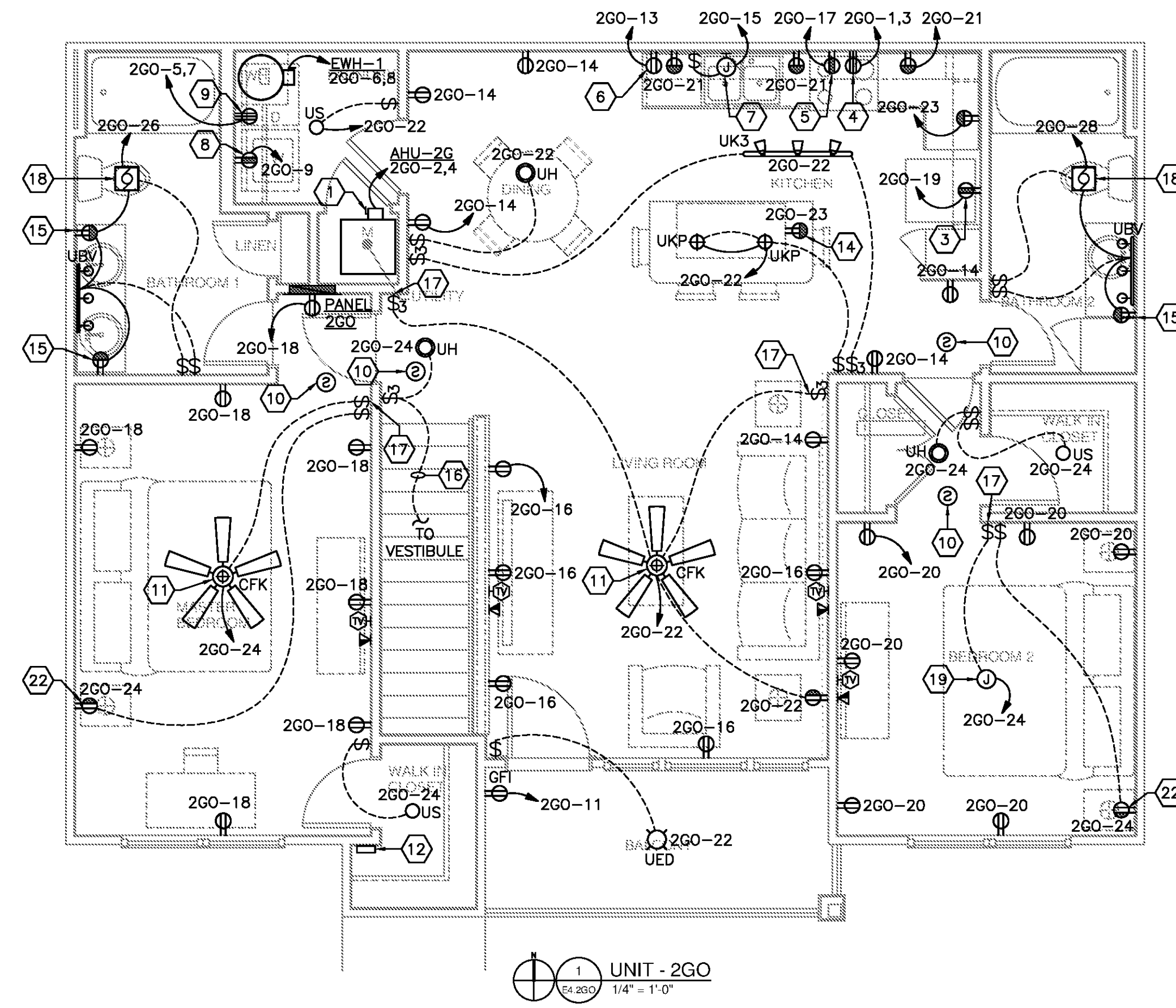


DWELLING LOAD CALCULATION

| | | |
|---------------------------------|---------------------|-----------------|
| Unit 2GO | SQ.FT = | 1185 |
| GENERAL LOAD | | |
| GENERAL LIGHTING AND RECEPTACLE | 3 VA PER SQ.FT | 3555 VA |
| SMALL APPLIANCE / LAUNDRY | 3 1500VA EACH | 4500 VA |
| DRYER | | 5600 VA |
| WATER HEATER | | 4500 VA |
| ELECTRIC RANGE | | 9600 |
| | SUBTOTAL | 27755 VA |
| | FIRST 3KVA @ 100% | 3000 VA |
| | REMAINDER @ 40% | 9902 VA |
| | SUBTOTAL | 12902 VA |
| | HVAC @100% | 6500 VA |
| | TOTAL | 19402 VA |
| | TOTAL/240V = | 81 AMPS |



GENERAL NOTES

ELECTRICAL OUTLETS OR BOXES LOCATED ON OPPOSITE SIDES OF RATED WALLS OR PARTITIONS SHALL MEET ONE OF THE FOLLOWING CRITERIA:

1. BOXES SHALL BE SEPARATED BY A HORIZONTAL DISTANCE OF NOT LESS THAN 24".
2. BOXES SHALL BE SURROUNDED ON 5 SIDES WITH FIRE RATED GYPSUM BOARD TO MAINTAIN THE FIRE RATING OF THE WALL.
3. BACK OF BOXES SHALL BE WRAPPED IN FIRE RESISTANT PUTTY SIMILAR TO SPEC-SEAL FIRE RATED PUTTY PADS.
4. PROVIDE 2 HOUR RATED BACK BOXES AND OFFSET BY THE WIDTH OF THE BOX.

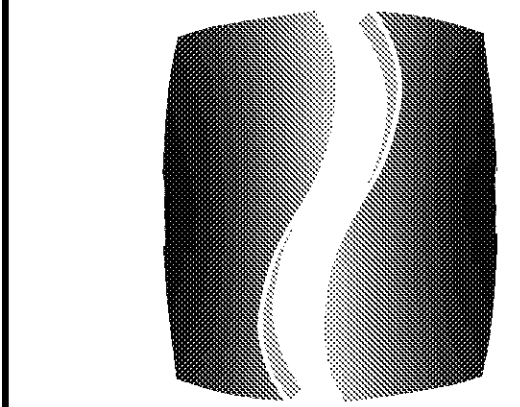
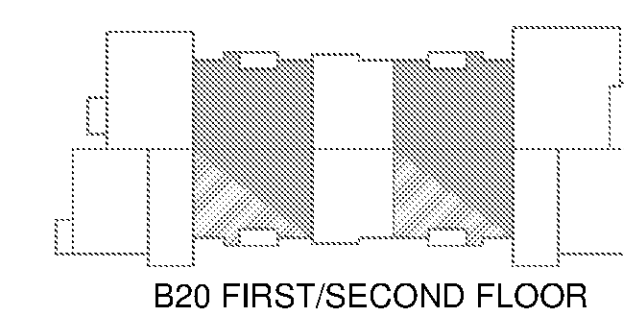
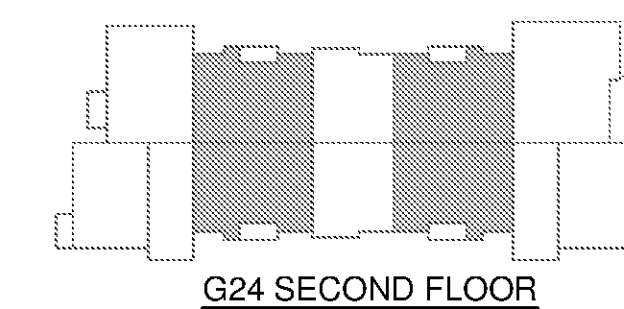
KEYED NOTES

- 1 AIR HANDLING UNIT CONNECTION.
- 2 WATER HEATER CONNECTION LOCATED ABOVE DRYER.
- 3 REFRIGERATOR CONNECTION MOUNT @ 60" AFF.
- 4 RANGE CONNECTION.
- 5 MICROWAVE/HOOD CONNECTION. MOUNT @ 76" AFF.
- 6 DISHWASHER CONNECTION.
- 7 GARBAGE DISPOSAL CONNECTION
- 8 WASHER CONNECTION. MOUNT @ 48" AFF.
- 9 DRYER CONNECTION. MOUNT @ 48" AFF. PROVIDE 4 WIRE RECEPTACLE.
- 10 CONNECT SMOKE DETECTOR AND COMBINATION CARBON MONOXIDE SENSOR/SMOKE DETECTOR AHEAD OF ALL SWITCHING AND GFI DEVICES. MAINTAIN 36" CLEARANCE FROM HVAC SUPPLY GRILLES. TIE ALL DETECTORS TOGETHER SO THAT AN ALARM IN ANY DETECTOR WILL CAUSE ALL DETECTORS IN THAT UNIT TO SOUND. PROVIDE ADDRESSABLE SMOKE DETECTOR WITH SOUNDER BASE TO PROVIDE NFPA 72 SOUND PRESSURE LEVEL.
- 11 ELECTRICAL CONTRACTOR TO PROVIDE AND INSTALL CEILING FAN. SEE LIGHT FIXTURE SCHEDULE.
- 12 CABINET FOR COLLECTION OF TELEPHONE, DATA AND TELEVISION WIRING FROM OUTLETS WITHIN THE UNIT. MOUNT AT 8'-0" A.F.F.
- 13 CONNECT VIA SWITCH TO APPROPRIATE UNIT.
- 14 MOUNT BROWN RECEPTACLE WITH BROWN PLATE 8" BELOW TOP OF COUNTER TO BOTTOM.
- 15 GFI MOUNTED 8" ABOVE COUNTER IN BATHROOM.
- 16 CONNECT ALL DEVICES IN THIS FOYER TO ASSOCIATED 2ND FLOOR UNIT.
- 17 PROVIDE SWITCH FOR CEILING FAN CONTROL. PROVIDE FOR 3-WAY OR 4-WAY CONTROL OF LIGHT WHERE APPLICABLE.
- 18 EXHAUST FAN IN BATHROOM. CONNECT TO LIGHTING CIRCUIT.
- 19 PROVIDE FAN RATED BOX WITH BLANK COVER FOR FUTURE FAN OR LIGHTING FIXTURE. PROVIDE CEILING FAN TYPE "CF" IN CONCIERGE UNITS OR AS NOTED ON ARCHITECTURAL DRAWINGS.
- 21 PROVIDE POWER CONNECTION TO ELECTRIC BASEBOARD HEATER INSTALLED IN VESTIBULE BY DIV 15. POWER FROM RESPECTIVE TENANT PANEL.
- 22 CONNECT THE BOTTOM HALF OF OUTLET TO SWITCH.
- 25 CONNECT TO RESPECTIVE TENANT PANEL.

ALL ELECTRICAL DESIGN AND INSTALLATION SHALL COMPLY WITH 2011 NEC.

ALL GENERAL RECEPTACLES REQUIRED BY NEC 210.52 SHALL BE TAMPER-RESISTANT.

UPGRADED LIGHT FIXTURES "UCK" AND "UCP" TO BE INSTALLED IN ALL CONCIERGE UNITS OR AS NOTED ON ARCHITECTURAL DRAWINGS.



PHILLIPS

Phone 770.394.1616 Fax 770.394.1314

CONSULTANT



SEAL

ISSUE & REVISION RECORD

| # | DATE | DESCRIPTION |
|---|----------|-------------|
| | 07/07/14 | BID SET |

This document is the property of Phillips Partnership, PC and is considered an instrument of service and is solely for use with respect to the project as indicated below. All rights reserved. This document may not be reproduced without the prior written consent of Phillips Partnership, PC.

PROJECT

SPRINGS AT FREMAUX TOWN CENTER
SLIDELL, LA

CLIENT

CONTINENTAL PROPERTIES
CONTINENTAL 294 FUND LLC
W134 N8875 EXECUTIVE PARKWAY
MENOMONEE FALLS, WI 53051
262.502.5500 • FAX 262.502.5522

PHILLIPS JOB NUMBER 1333104

ISSUE DATE 07/07/14

DRAWN BY/CHECKED BY KMK/JDP

DRAWING TITLE

UNIT 2GO & U2GO: POWER AND LIGHTING PLANS

SHEET NUMBER

E4.2GO

NORTH TERRACES
400 PERIMETER CENTER TERRACE
SUITE 650
ATLANTA, GEORGIA 30346