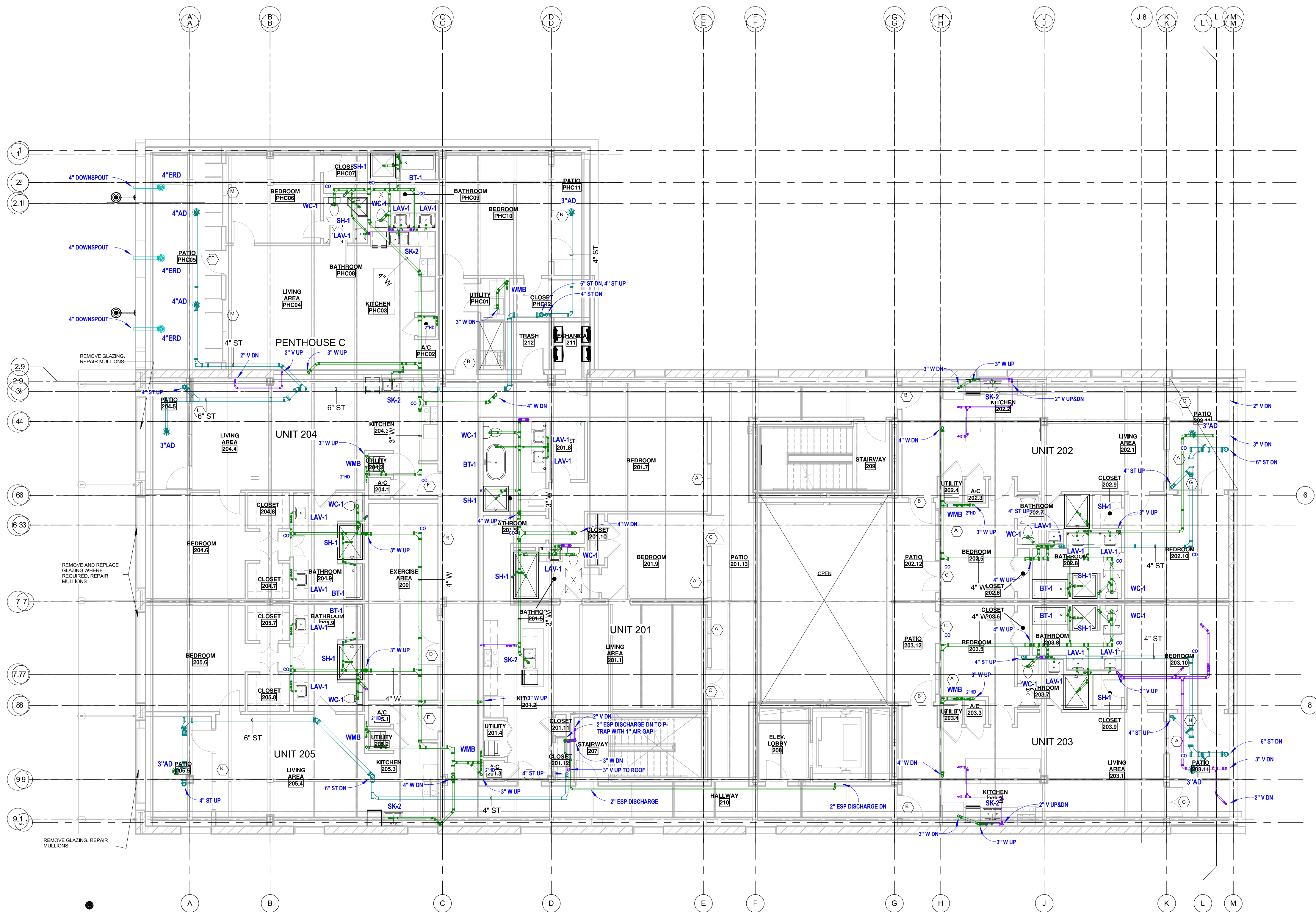


NOTE: THE INFORMATION CONTAINED IN THIS DOCUMENT IS PROPRIETARY TO PONTCHARTRAIN MECHANICAL CO., INC. THE DOCUMENT MAY NOT BE DISCLOSED, DUPLICATED, OR USED FOR ANY PURPOSE, IN WHOLE OR IN PART, WITHOUT THE PRIOR WRITTEN CONSENT OF PONTCHARTRAIN MECHANICAL CO., INC.



1 2nd FLOOR - PLUMBING - W&V  
 1/8" = 1'-0"

**WAX MUSEUM CONDOS**  
 THE FRENCH QUARTER  
 917 CONTI STREET, NEW ORLEANS, LA 70112

THESE PLANS AND SPECIFICATIONS HAVE BEEN PREPARED BY ME OR UNDER MY CLOSE PERSONAL SUPERVISION AND TO THE BEST OF MY KNOWLEDGE AND BELIEF THEY COMPLY WITH ALL CITY, STATE AND FEDERAL REQUIREMENTS, AND I AM NOT PROVIDING CONTRACT ADMINISTRATION.

CERTIFIED CORRECT



THIS DRAWING IS CONFIDENTIAL AND NOT BE LOANED, REPRODUCED, COPIED, EITHER WHOLLY OR IN PART, OR MADE PUBLIC IN ANY MANNER WITHOUT THE WRITTEN CONSENT OF HBSA II ARCHITECTS. A PROFESSIONAL L.L.C. ALL RIGHTS OF DESIGN OR INVENTION ARE RESERVED AND WILL REMAIN THE SOLE PROPERTY OF HBSA II ARCHITECTS A PROFESSIONAL L.L.C.

REVISION HISTORY			
NO.	DATE	DESCRIPTION	BY
1	06/20/16	SCHEMATIC DESIGN	
2	07/14/16	DESIGN DEVELOPMENT	
3	08/12/16	PERMIT REVIEW	
4	09/27/16	PERMIT	

2nd FLOOR - W&V

PROJECT#:  
 PHASE: PERMIT  
 DRAFTER: MNB  
 CHECKER: WPH  
 SCALE: AS NOTED  
 ISSUED: 9/27/2016

SHEET#:

**P102**

