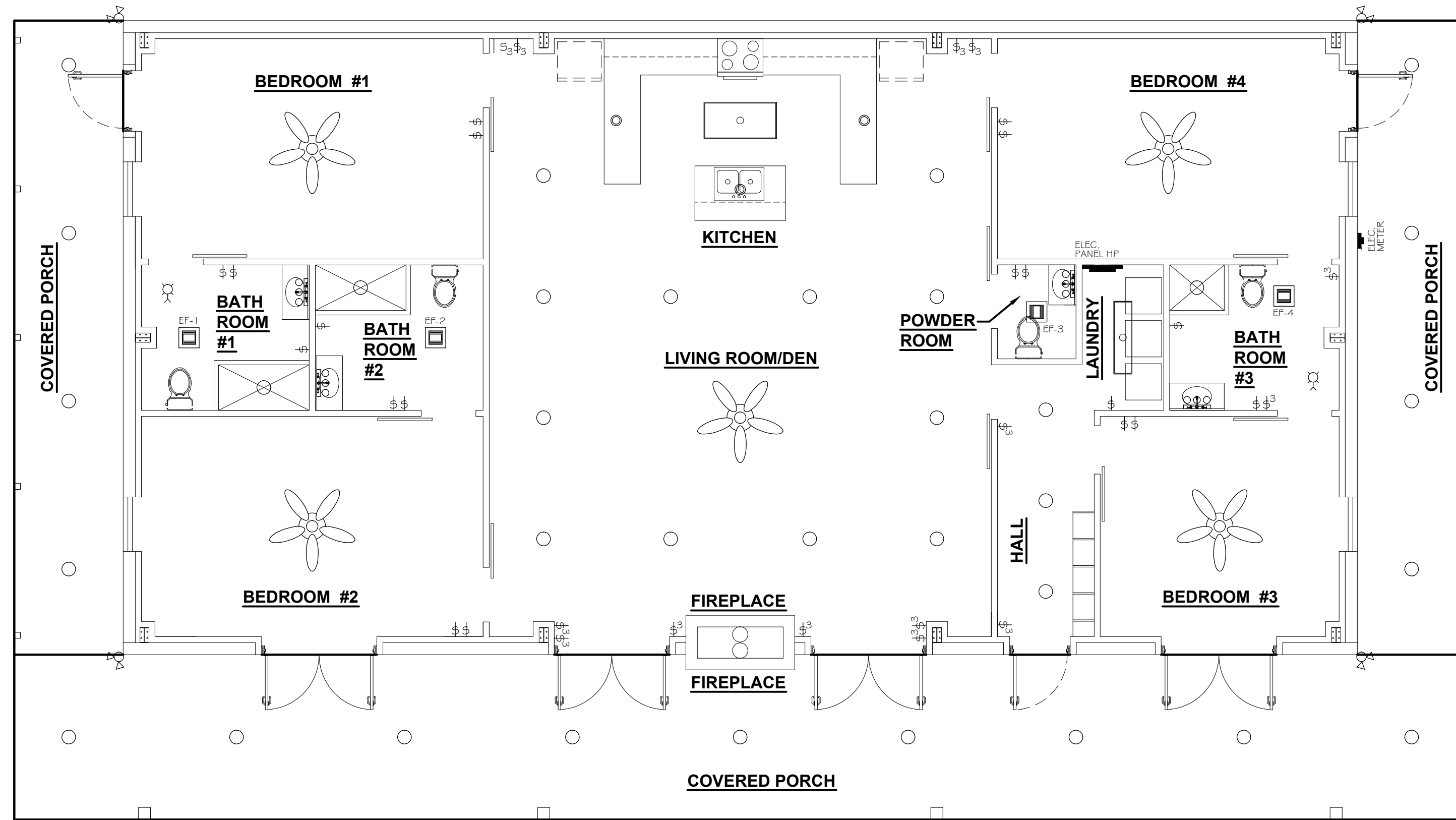
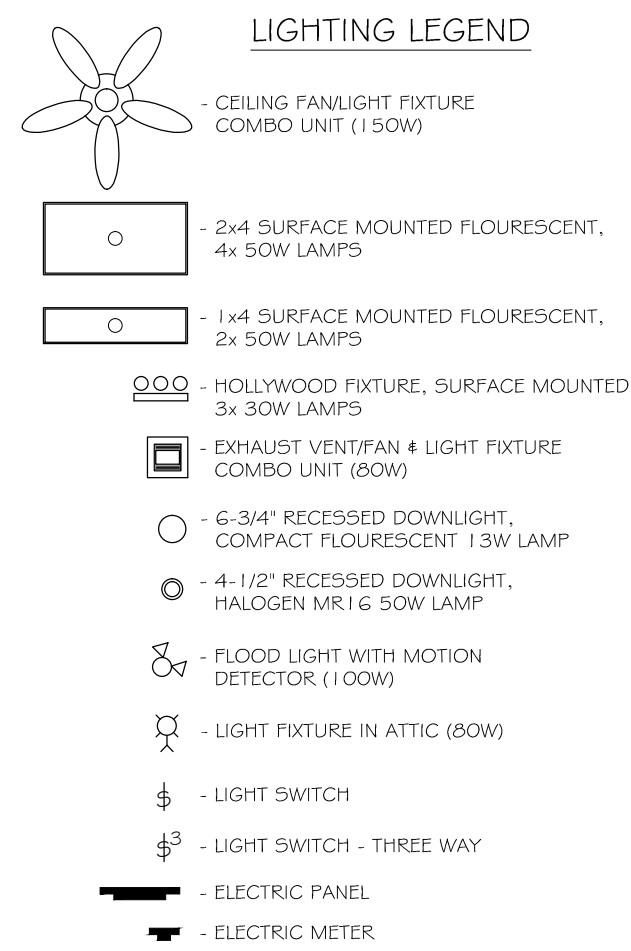


ELECTRICAL NOTES

- DRAWINGS ARE DIAGRAMMATIC ONLY. FURNISH ALL CONDUIT, TRINGS, PANELS, BREAKERS, DISCONNECTS, ACCESSORIES, ETC. FOR COMPLETE INSTALLATION RATHER OR NOT EVERY ITEM IS SHOWN OR SPECIFIED.
- THESE DRAWINGS ARE INTENDED AS GENERAL GUIDELINES FOR PURPOSES OF ESTABLISHING CERTAIN MIN. CRITERIA, AND DO NOT NECESSARILY REPRESENT THE FINAL LAYOUT. ARRANGEMENT, SIZE, BRAND NAME, CAPACITY OR OTHER CHARACTERISTICS OF THE ENGINEERED SYSTEM SHALL BE DESIGNED IN ACCORDANCE WITH ALL APPLICABLE CODES, STANDARDS AND REQUIREMENTS OF LOCAL UTILITY OFFICIALS.
- INSTALL GFI OUTLETS AS REQUIRED BY APPLICABLE CODES. INSTALL GROUND FAULT RECEPTACLES AT RECEPTACLE LOCATIONS WITHIN 5' OF SINKS OR LAVATORIES, AND AT EXTERIOR LOCATIONS. EXTERIOR RECEPTACLES SHALL ALSO BE WEATHERPROOF.
- INSTALL HARDWIRED SMOKE DETECTORS WITH BATTERY BACKUP AS REQUIRED. INTER-CONNECT DETECTORS SO THAT ALL BELL SOUND SHOULD ONE DETECTOR ACTIVATE.
- SOME EQUIPMENT SHOWN ON OTHER PLANS MAY REQUIRE ELECTRICAL SERVICE, SUCH AS WATER HEATER, CONDENSING UNITS, AIR-HANDLING UNITS, CONDENSATE PUMPS, ETC.. ELECTRICAL CONTRACTOR SHALL INCLUDE ELECTRICAL SERVICE TO ALL SUCH EQUIPMENT. COORDINATE WITH OTHER TRADES CONCERNING CONCERNING ITEMS REQUIRING ELECTRICAL SERVICE. PROVIDE ONE DUPLEX OUTLET AND LIGHT IF UNIT IS IN NON-LIT AREA FOR EVERY CONDENSING UNIT AND EVERY AIR-HANDLING UNIT AS REQUIRED BY APPLICABLE CODES.
- OBTAIN NAME PLATE AND RATINGS OF ALL EQUIPMENT BEFORE ROUGHING IN AND PROVIDE WIRING OF PROPER SIZE, VOLTAGE, AND AMPACITY. PROVIDE FUSED OR NON-FUSED DISCONNECT SWITCH AS REQUIRED.
- PROVIDE PANEL BOARDS OF PROPER VOLTAGE AND AMPACITY FOR ALL ELECTRICAL CIRCUITS.
- VERIFY SERVICE REQUIREMENTS WITH LOCAL POWER COMPANY INCLUDING TRANSFORMER, LOCATIONS AND TYPES, DISCONNECTS AT EXTERIOR OF BLDG., VOLTS AND AMPACITIES AND OTHER DETAILS OF ELECTRICAL CONSTRUCTION. SIZE ALL FEEDERS ACCORDING TO NEC REQUIREMENTS.
- RUN ALL CABLE CONCEALED IN WALLS, CEILING OR FLOORS UNLESS NOTED OTHERWISE.
- SUPPORT ALL FIXTURES AND OTHER ITEMS RIGIDLY FROM STRUCTURE.
- INSULATE AND SEAL SOLIDLY BEHIND RECEPTACLES IN EXTERIOR WALLS.
- ALL SWITCHES AND OUTLETS ON FIRST FLOOR TO BE 1'-0" ABOVE BASE FLOOR ELEVATION.
- WHERE MORE THAN ONE SWITCH OCCURS IN THE SAME LOCATION, THEY SHALL BE INSTALLED IN A GANG TYPE BOX UNDER ONE COVER PLATE.
- ALL OUTLETS SHALL BE INSTALLED 18" AFF UNLESS NOTED OTHERWISE. SEE ELECTRICAL POWER PLAN FOR INDICATED MOUNTING HEIGHT.
- REFER TO REFLECTED CEILING PLAN FOR RECESSED LIGHT FIXTURE LOCATIONS.



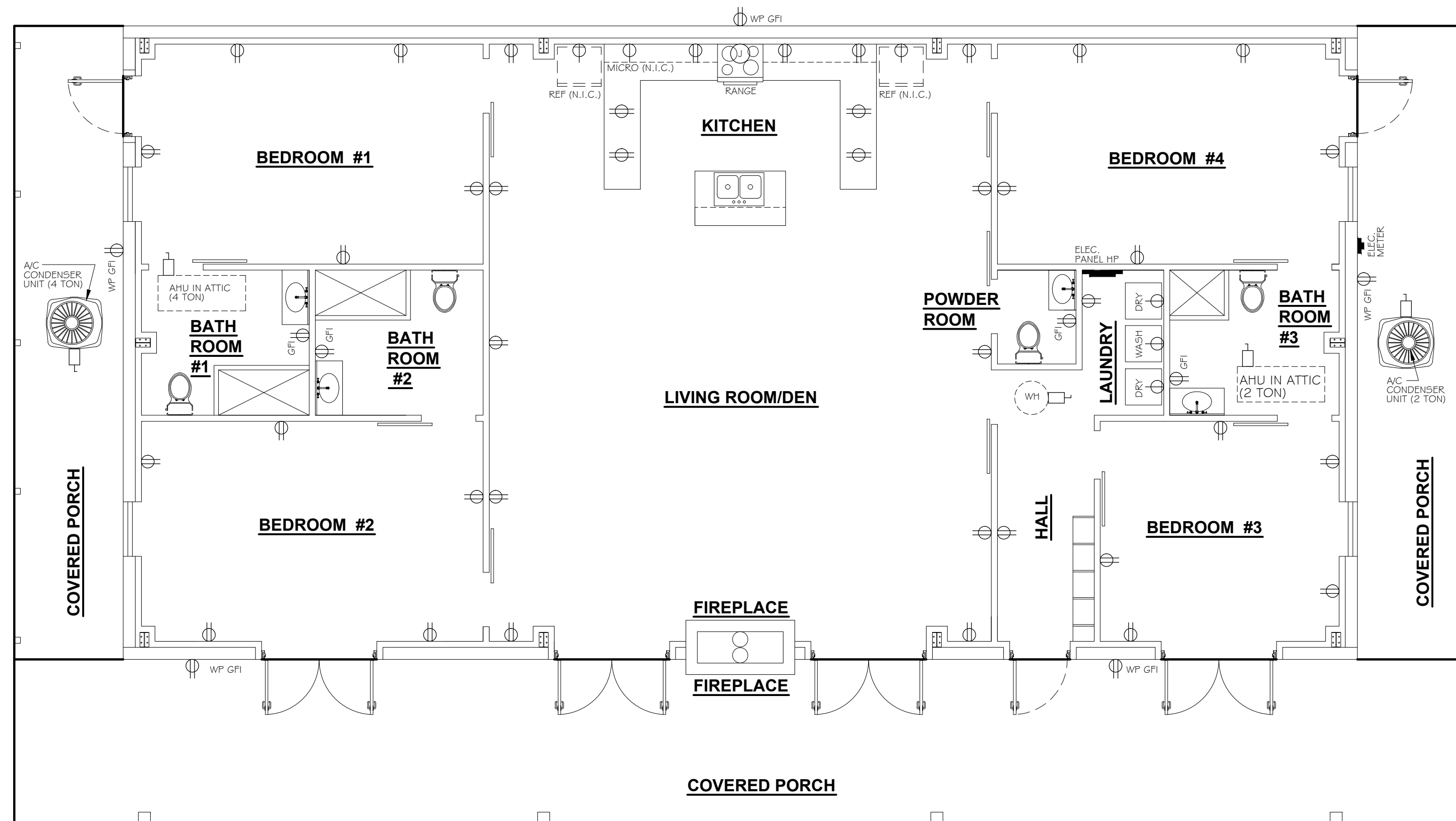
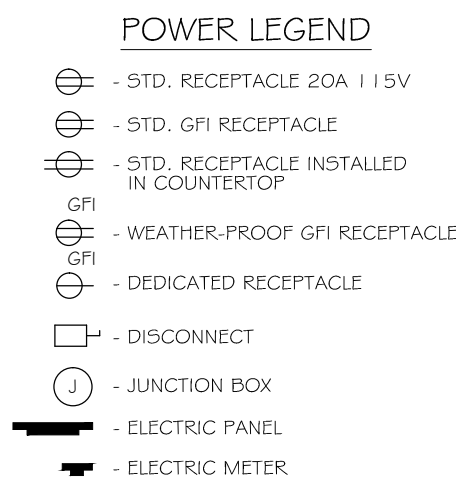
2 LIGHTING PLAN
SCALE: 3/16" = 1'-0"

PANEL HP
LOCATION: LAUNDRY ROOM
FEEDER SOURCE: ELECTRIC UTILITY COMPANY

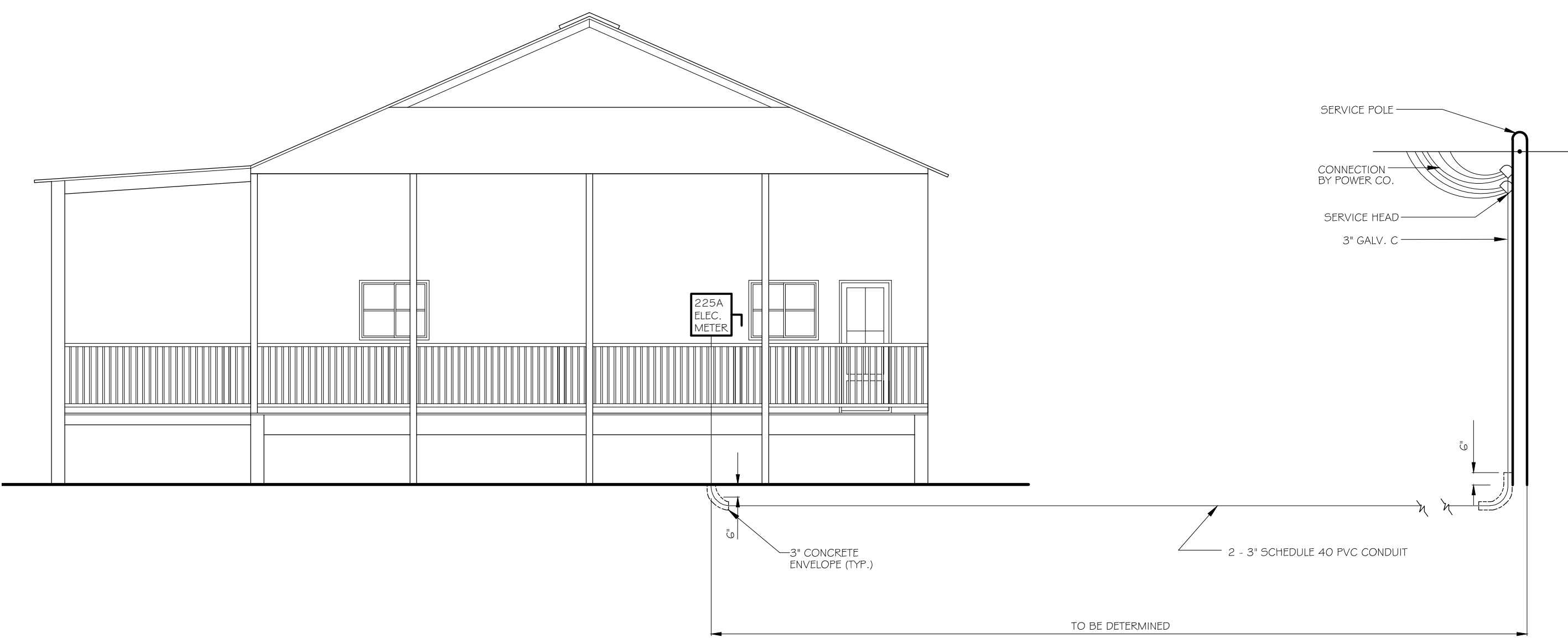
VOLTAGE: 120/240V, 225A 1Ø, 3W
ENCLOSURE: SURFACE MOUNTED, 25A MB, WEQUIPMENT GND BAR

CCT NO.	TRNG SIZE	LOAD DESCRIPTION	DWZR	LOAD (VA)	TRNG SIZE	LOAD DESCRIPTION	DWZR	LOAD (VA)	CCT NO.	
1	#8	A/C CONDENSING UNIT 4 TON	40 2	3000	#360	AIR HANDLING UNIT 2 TON 10 kw HEAT	2 45	2360	#6	
3	#10	A/C CONDENSING UNIT 2 TON	20 2	1440	#360	AIR HANDLING UNIT 2 TON 10 kw HEAT	2 60	2360	#6	
5	#10	DEDICATED 220V RECEPTACLE IN LAUNDRY ROOM FOR DRYER	20 2	2500	#2500	DEDICATED 220V RECEPTACLE IN LAUNDRY ROOM FOR DRYER	2 30	2500	#10	
7	#10	DEDICATED 220V RECEPTACLE IN LAUNDRY ROOM FOR DRYER	20 2	2500	#2500	DEDICATED 220V RECEPTACLE IN LAUNDRY ROOM FOR DRYER	2 30	2500	#10	
9	#10	DEDICATED 220V RECEPTACLE IN LAUNDRY ROOM FOR DRYER	20 2	2500	#2500	DEDICATED 220V RECEPTACLE IN LAUNDRY ROOM FOR DRYER	2 30	2500	#10	
11	#10	DEDICATED 220V RECEPTACLE IN LAUNDRY ROOM FOR DRYER	20 2	2500	#2500	DEDICATED 220V RECEPTACLE IN LAUNDRY ROOM FOR DRYER	2 30	2500	#10	
13	#6	JUNCTION BOX FOR RANGE	50 2	4800	#4800	WATER HEATER IN ATTIC 30 GALLON	2 40	4500	#6	
15	#6	JUNCTION BOX FOR RANGE	50 2	4800	#4800	WATER HEATER IN ATTIC 30 GALLON	2 40	4500	#6	
17	#12	RECEPTACLES IN LIVING ROOM DEN AREA ALONG LEFT WALL	20 1	900	#900	RECEPTACLES IN LIVING ROOM DEN AREA ALONG RIGHT WALL	1 20	900	#12	
19	#12	RECEPTACLES IN KITCHEN AREA & W/P GFI RECEPTACLE ON REAR EXTERIOR WALL	20 1	1440	#1440	RECEPTACLES IN KITCHEN AREA & W/P GFI RECEPTACLE ON REAR EXTERIOR WALL	1 20	1440	#12	
21	#12	DEDICATED RECEPTACLE FOR REFRIGERATOR	20 1	180	#180	DEDICATED RECEPTACLE FOR REFRIGERATOR	1 20	180	#12	
23	#12	DEDICATED RECEPTACLE FOR MICROWAVE	20 1	180	#180	DEDICATED RECEPTACLE FOR MICROWAVE	1 20	180	#12	
25	#12	BEDROOM #1 RECEPTACLES, BATHROOM #1 GFI RECEPTACLE & W/P GFI RECEPTACLE	20 1	1260	#1260	BEDROOM #2 RECEPTACLES, BATHROOM #2 GFI RECEPTACLE & W/P GFI RECEPTACLE	1 20	1260	#12	
27	#12	HALL & LAUNDRY STANDARD RECEPTACLES, & POWDER ROOM GFI RECEPTACLE	20 1	540	#540	SMOKE DETECTORS	1 20	1800	#12	
29	#12	DEDICATED RECEPTACLE IN LAUNDRY FOR WASHING MACHINE	20 1	180	#180	DEDICATED RECEPTACLE IN LAUNDRY FOR WASHING MACHINE	1 20	180	#12	
31	#12	LIVING ROOM DEN & KITCHEN AREA LIGHTS & CEILING FAN	20 1	700	#400	1 20	400	#12		
33	#12	BEDROOMS 1 & 4 LIGHTS & CEILING FANS, BATHROOM 3 LIGHTS & EXHAUST FAN	20 1	400	#400	1 20	400	#12		
35	#12	COVERED PORCHES LIGHTS & ATTIC LIGHT	20 1	400	#400	1 20	400	#12		
37	-	SPARE	20 1	-	-	SPARE	1 20	-	36	
39	-	SPARE	20 1	-	-	SPARE	1 20	-	38	
41	-	SPARE	20 1	-	-	SPARE	1 20	-	40	
				TOTAL CONNECTED LOAD (VA) = 73,060					GROUND BUS	
				1Ø = 36,540					GROUND WIRE (Ø)	
				3Ø = 36,520						

NOTE:
1. ALL SINGLE POLE BREAKERS SHALL BE ARC FAULT
2. REINSTALL MANUFACTURER RECOMMENDED BREAKERS FOR HVAC AND APPLIANCES INSTALLED.



1 POWER PLAN
SCALE: 3/16" = 1'-0"



ELECTRICAL SERVICE DETAIL
NTS

REVISIONS

#	DATE	DESCRIPTION

SEAL:

A MULTIPLE USE BUILDING FOR
THE HINES PROPERTY IN
TANGIPAHOOSSA COUNTY
MISSISSIPPI

JOB No: 221B DATE: 12-22-14
1084 JOHN AVACKER ROAD
POPLARVILLE, MS 39470

DRAWN BY: JTL CHECKED BY: GKD

SHEET TITLE:
ELECTRICAL PLANS

DRAWING NUMBER:
M1

SHEET No: 1 of 1