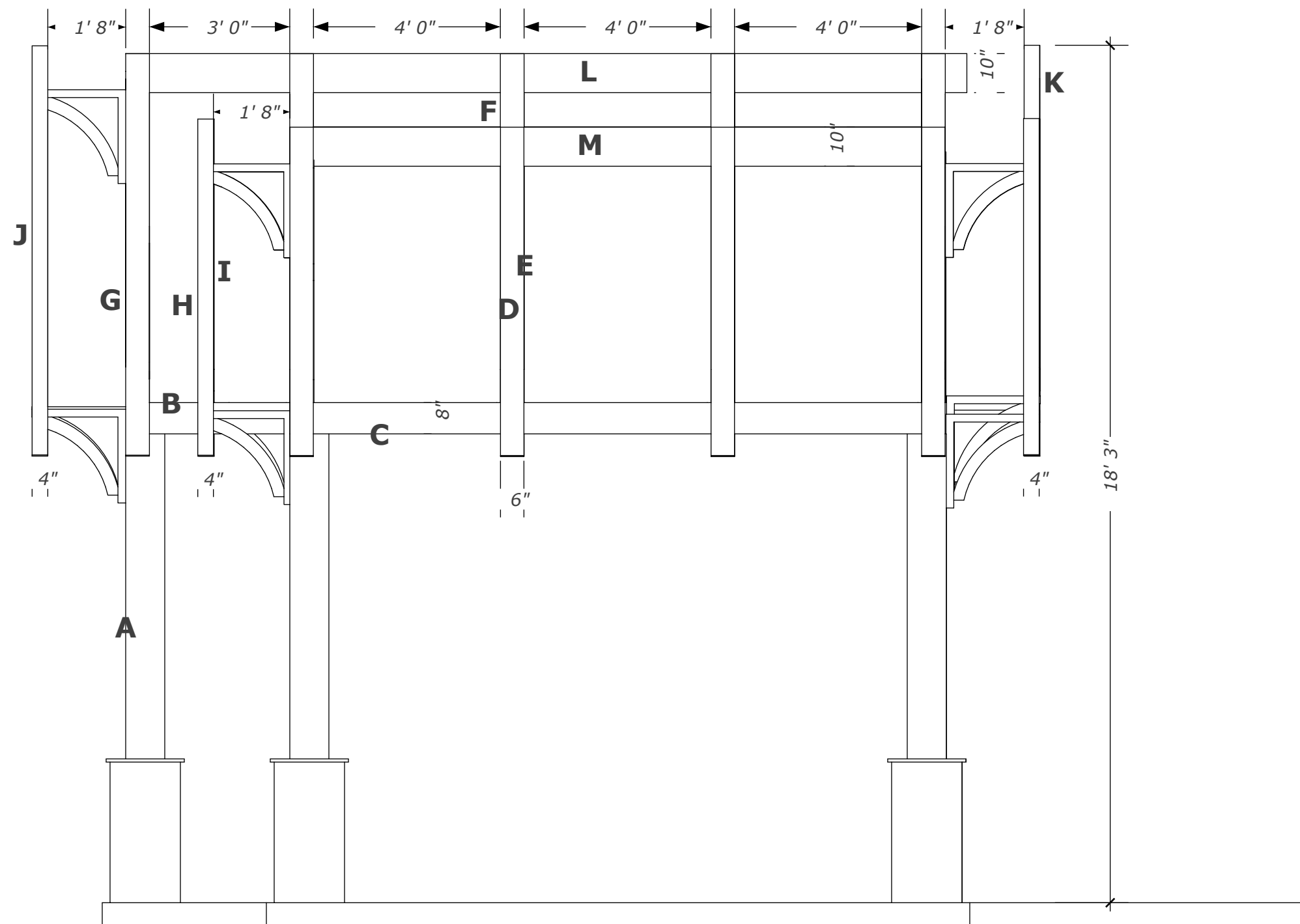
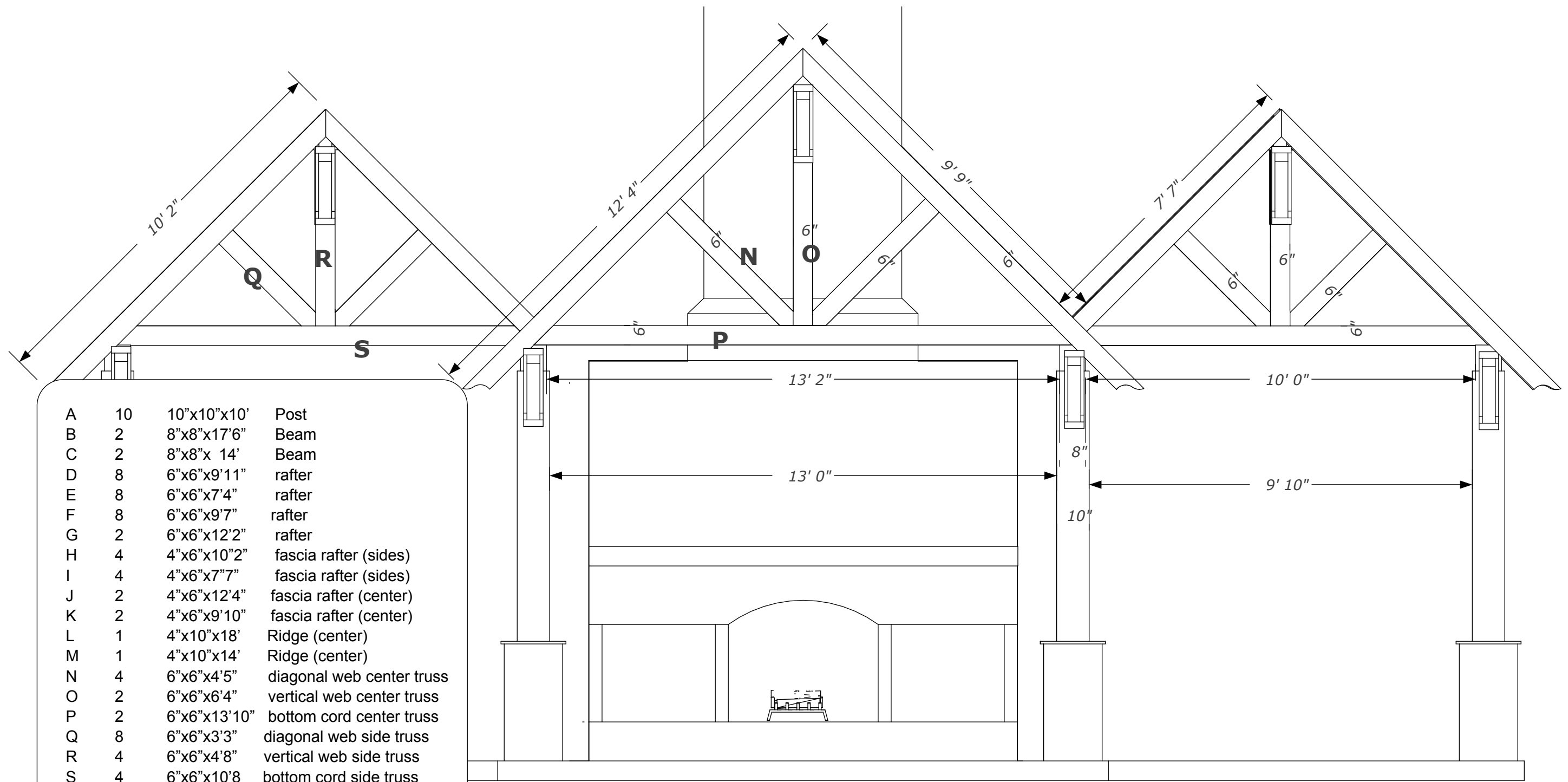


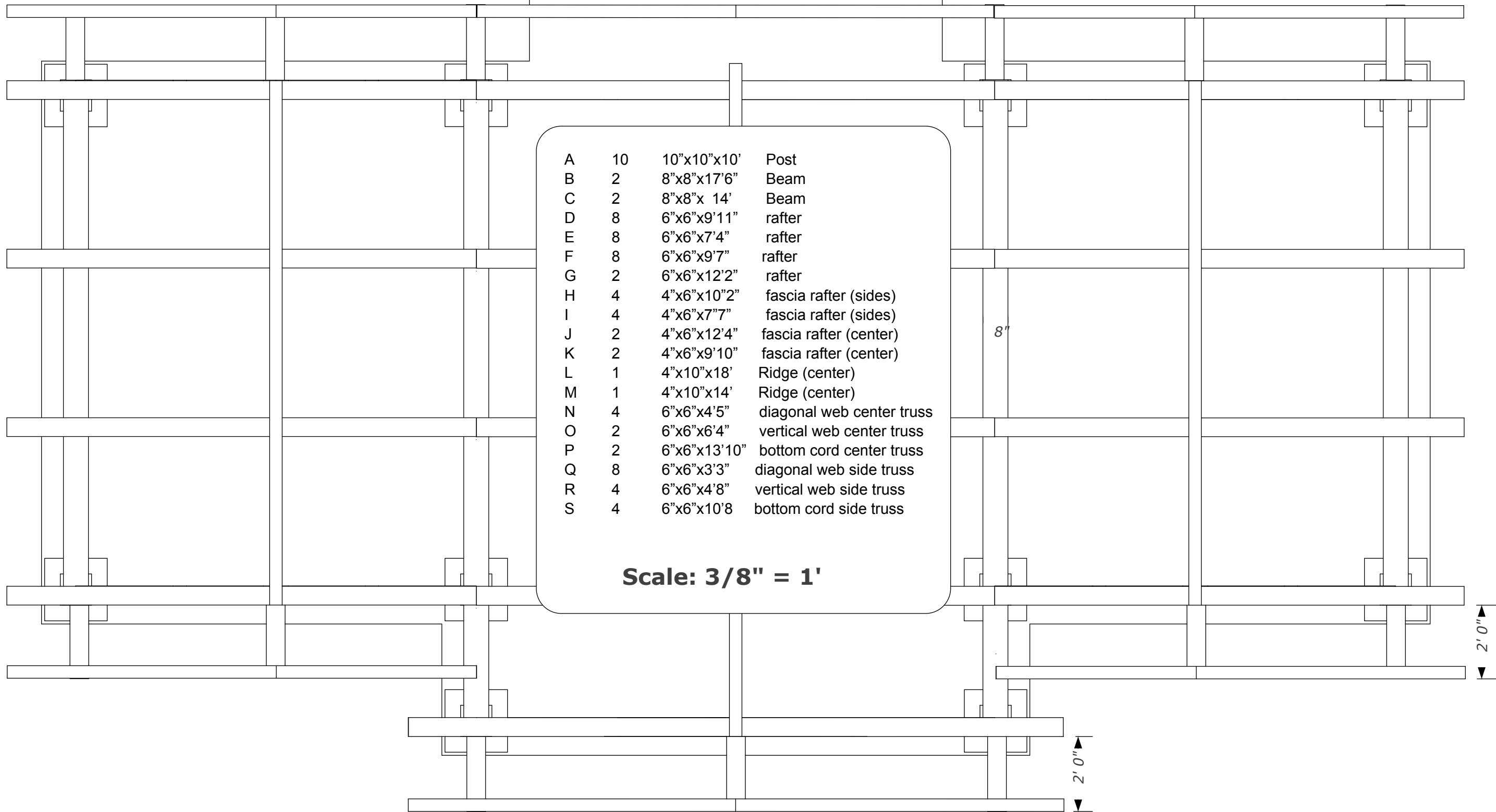
A	10	10"x10"x10'	Post
B	2	8"x8"x17'6"	Beam
C	2	8"x8"x 14'	Beam
D	8	6"x6"x9'11"	rafter
E	8	6"x6"x7'4"	rafter
F	8	6"x6"x9'7"	rafter
G	2	6"x6"x12'2"	rafter
H	4	4"x6"x10'2"	fascia rafter (sides)
I	4	4"x6"x7'7"	fascia rafter (sides)
J	2	4"x6"x12'4"	fascia rafter (center)
K	2	4"x6"x9'10"	fascia rafter (center)
L	1	4"x10"x18'	Ridge (center)
M	1	4"x10"x14'	Ridge (center)
N	4	6"x6"x4'5"	diagonal web center truss
O	2	6"x6"x6'4"	vertical web center truss
P	2	6"x6"x13'10"	bottom cord center truss
Q	8	6"x6"x3'3"	diagonal web side truss
R	4	6"x6"x4'8"	vertical web side truss
S	4	6"x6"x10'8"	bottom cord side truss

Scale: 3/8" = 1'





Scale: 3/8" = 1'



A	10	10"x10"x10'	Post
B	2	8"x8"x17'6"	Beam
C	2	8"x8"x 14'	Beam
D	8	6"x6"x9'11"	rafter
E	8	6"x6"x7'4"	rafter
F	8	6"x6"x9'7"	rafter
G	2	6"x6"x12'2"	rafter
H	4	4"x6"x10"2"	fascia rafter (sides)
I	4	4"x6"x7"7"	fascia rafter (sides)
J	2	4"x6"x12'4"	fascia rafter (center)
K	2	4"x6"x9'10"	fascia rafter (center)
L	1	4"x10"x18'	Ridge (center)
M	1	4"x10"x14'	Ridge (center)
N	4	6"x6"x4'5"	diagonal web center truss
O	2	6"x6"x6'4"	vertical web center truss
P	2	6"x6"x13'10"	bottom cord center truss
Q	8	6"x6"x3'3"	diagonal web side truss
R	4	6"x6"x4'8"	vertical web side truss
S	4	6"x6"x10'8"	bottom cord side truss

**Scale: 3/8" = 1'**

