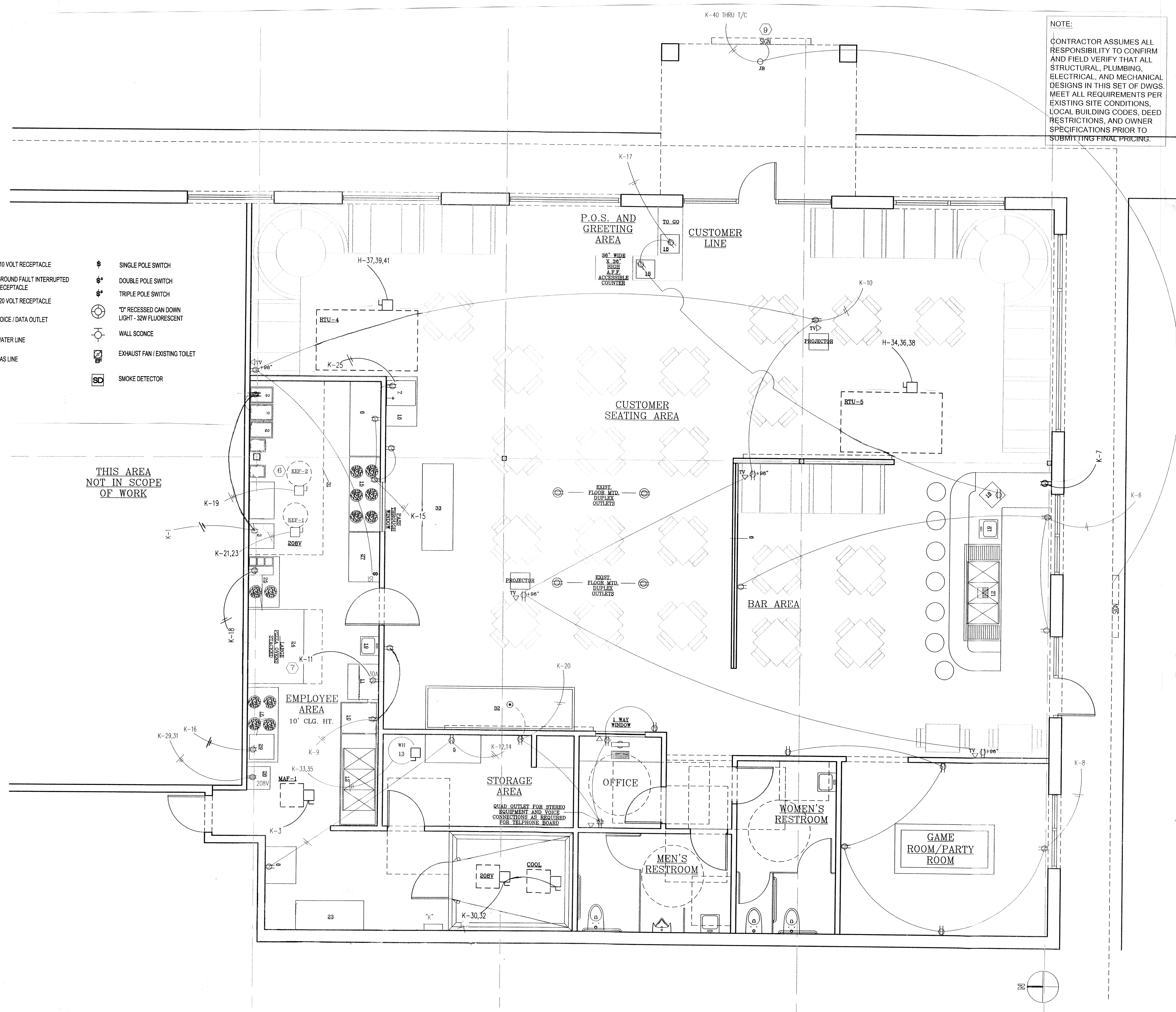


- ⊕ 110 VOLT RECEPTACLE
- ⊕⊕ GROUND FAULT INTERRUPTED RECEPTACLE
- ⊕⊕ 220 VOLT RECEPTACLE
- ▽ VOICE / DATA OUTLET
- W WATER LINE
- G GAS LINE
- ⊕ SINGLE POLE SWITCH
- ⊕⊕ DOUBLE POLE SWITCH
- ⊕⊕⊕ TRIPLE POLE SWITCH
- ⊕⊕ RECESSED CAN DOWN LIGHT - 32W FLUORESCENT
- ⊕ WALL SCONCE
- ⊕ EXHAUST FAN / EXISTING TOILET
- ⊕ SMOKE DETECTOR

THIS AREA NOT IN SCOPE OF WORK



NOTE:  
CONTRACTOR ASSUMES ALL RESPONSIBILITY TO CONFIRM AND FIELD VERIFY THAT ALL STRUCTURAL, PLUMBING, ELECTRICAL, AND MECHANICAL DESIGNS IN THIS SET OF DWGS. MEET ALL REQUIREMENTS PER EXISTING SITE CONDITIONS, LOCAL BUILDING CODES, DEED RESTRICTIONS, AND OWNER SPECIFICATIONS PRIOR TO SUBMITTING FINAL PRICING.

- ⑤ NEW 3P-30 NFDS NEMA 3 FOR COND UNIT AND CONN TO AHU W/ 6 KW HEATER
- ⑥ NEW 2P-30 NFDS NEMA 3 FOR ROOF MOUNTED EF-1, EF-2 AND SF-1
- ⑦ ALL UNDERHOOD RECEPTACLES TO BE SHUNT-TRIP FOR ANSEL DISCONNECT ALL KITCHEN ELEC CONN TO BE GFI PROTECTED @48" AFF
- ⑧ WALL SWITCHES S1 THRU S4 FOR LIGHTING AND S5 FOR WALL MTD SIGNS CONN TO +96 AFF RECEPTACLES

MAF-MAKE UP AIR FAN OPTIONAL  
KEF-1 AND 2 - KITCHEN EXHAUST FAN

GENERAL NOTES SCALE 2

EQUIPMENT SCHEDULE						
NO.	DESCRIPTION OF ITEM	AMPS	VOLTS	RTU	H/P	REMARKS
1	15-1/2" Fryer - 40 LBS.			115,000		NEED 2" GAS PIPE RUN
2	22-1/2" Fryer - 75 LBS.			185,000		
3	24" Broiler			60,000		
4	36" Griddle			60,000		
5	64" Freezer	6.2	115/60/1		1/2	TOTAL 300 AMPS
6	72" Prep Table S/S	10.0	115/60/1		1/2	
7	Beverage Dispenser	9.0	110/115		1/3	
8	Slager and 36" Table	1.6	110		1/4	
9	Walk in Cooler	17.0	208/230/60		2.0	6X10 EXTERIOR DIMENSIONS
10	Dishwasher	7.3	110		1.0	UNDER COUNTER-INSTALL NEXT TO SINK #12
11	Ice Machine	24.8	110			
12	3 Compartment Sink					BINS ARE 16" W X 16" L X 12" D W/ ROUNDED EDGES- STAINLESS STEEL
13	Mop Sink					SIZE 36" X 36"
14	Water Heater		208		4.5 KW	INSTALL ON FLOOR
15	Work Table					SIZE 72" X 30"
16	Beverage Station					SIZE 30" X 48"
17	Beverage Cooler	9.0	115/60/1			INSTALL BEHIND ORDER COUNTER
18	Cash Register		110/115			INSTALL 1 AT BAR AND 2 AT ORDER COUNTER
19	Hand Sink					AT KITCHEN
20	4 Top Dining Table					
21	2 Top Dining Table					
22	Margarita Machine					
23	26" X 66" Table					
24	(1) Pizza Oven	14	110/115	80,000		
25	Pizza Make Table	10	110			SIZE 48" X 30"
26						
27	Cut Package Pizza Table					SIZE 48" X 30"
28	Dough Mixer	14	220			
29	Dough Roller	14	110			SITS ON #15
30	6" Heat Hood	KEF-1				INTERLOCK W/ SF-1 AND AHU
31	14" Vent Hood	KEF-2				
32	Buffet Table	6.2	115/60/1		1/2	12'-0" X 48" DEEP BUFFET TABLE
33	Pizza Pickup Table					SIZE 84" X 30"
	KITCHEN TOTAL AMPS	148.7	AMPS			