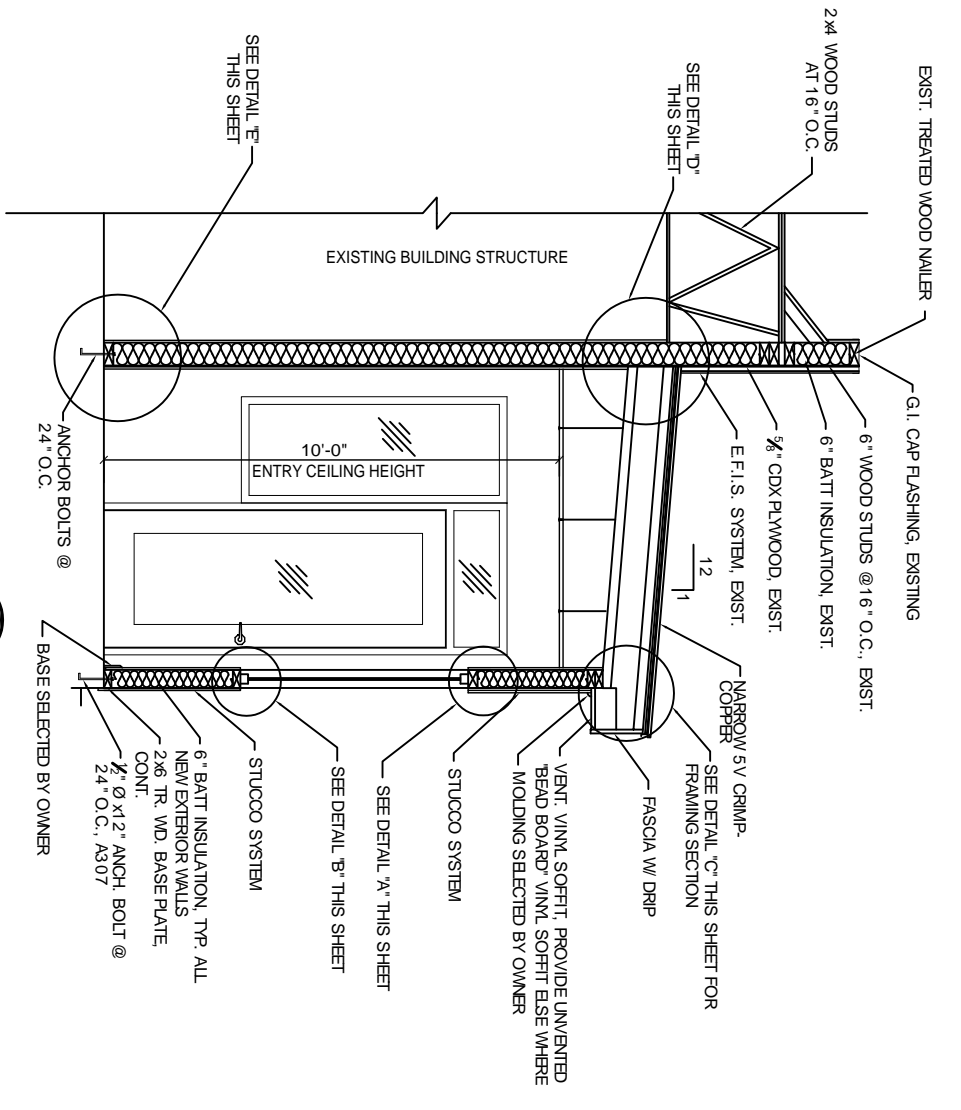
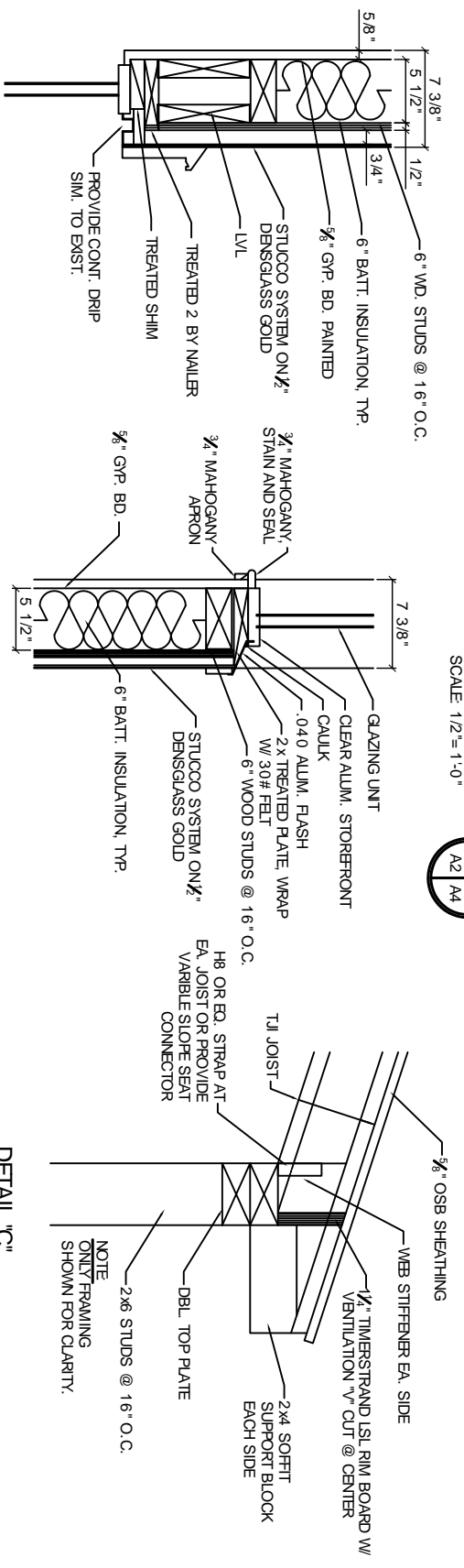


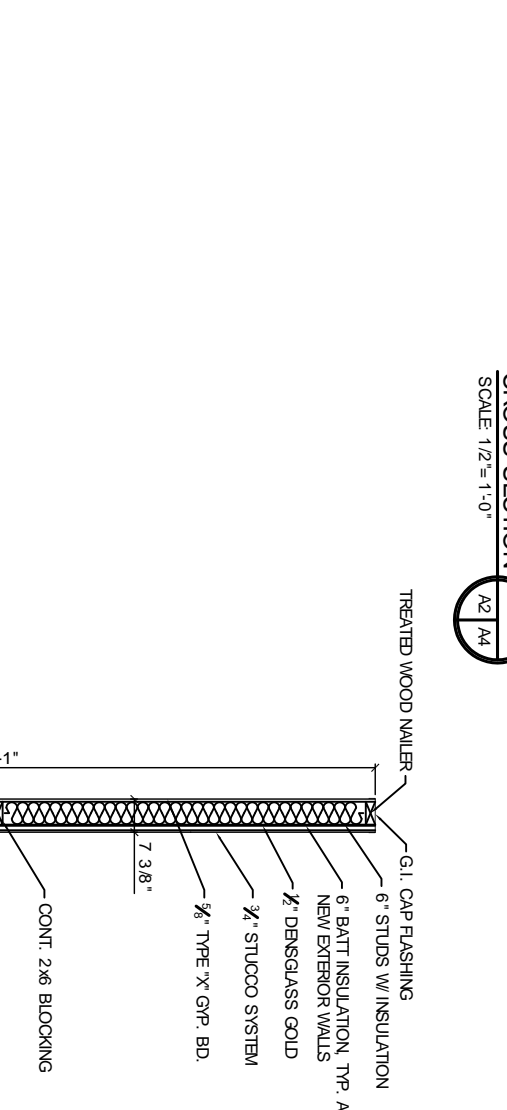
CROSS SECTION A
SCALE 1/2" = 1'-0"
A2 | A4



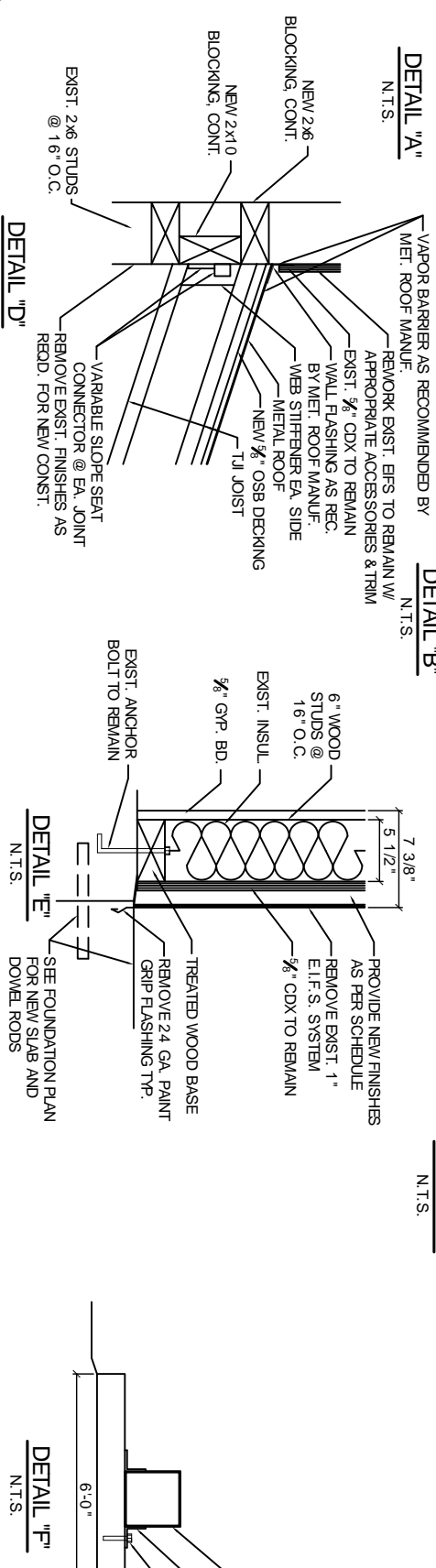
CROSS SECTION B
SCALE 1/2" = 1'-0"
A2 | A4



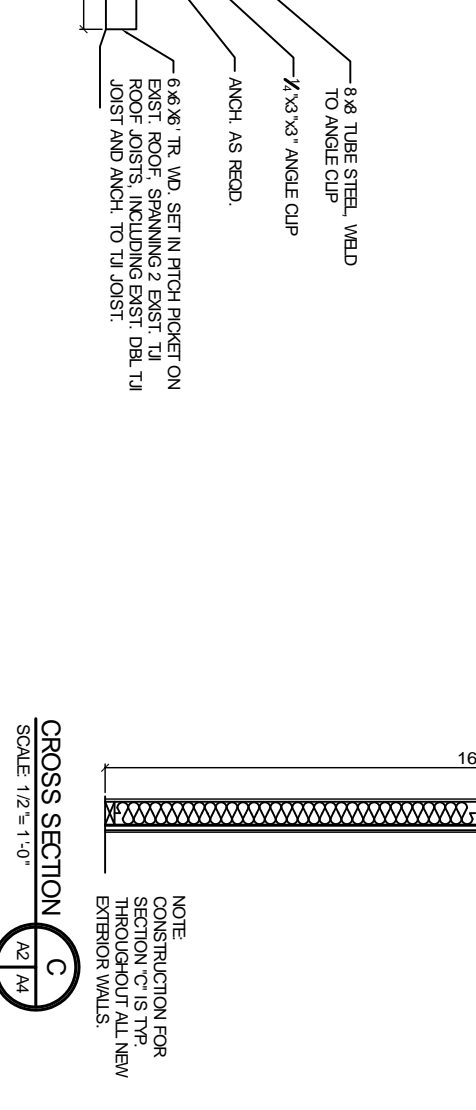
DETAIL "A"
N.T.S.



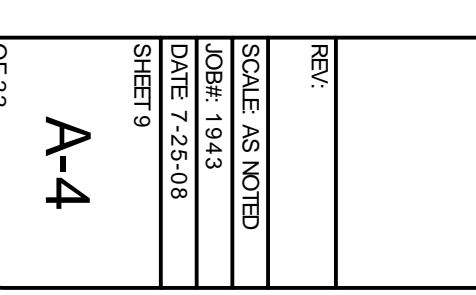
DETAIL "B"
N.T.S.



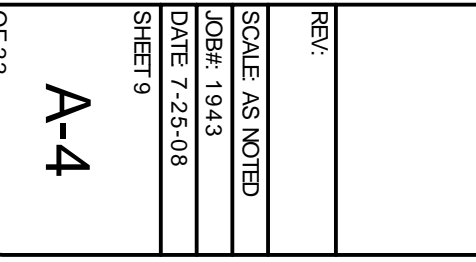
DETAIL "C"
N.T.S.



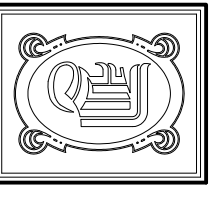
DETAIL "D"
N.T.S.



DETAIL "E"
N.T.S.



DETAIL "F"
N.T.S.



DAMMON ENGINEERING, INC

CHIEF ENGINEER
EMMETT DAMMON, P.E.
CHIEF ARCHITECT
ROBERT WILTSE

1095 FLORIDA AVENUE
SUITE LL, LA, 70458
OFFICE: 985-649-5932
FAX: 985-641-5950

WWW.DAMMONENGINEERING.COM
WEBSITE:
EMAIL:
DAMMONENG@BELL.SOUTH.NET

ARCHITECTURE
ENGINEERING
STUDIES
PLANNING
INVESTIGATION
EXPERT WITNESS

RESTAURANT RENOVATION

OSAKA
287 S. MORRISON BLVD
HAMMOND, LA

CROSS SECTION

REV:
SCALE: AS NOTED
JOB#: 1943
DATE 7-25-08
SHEET 9
A-4
OF 22