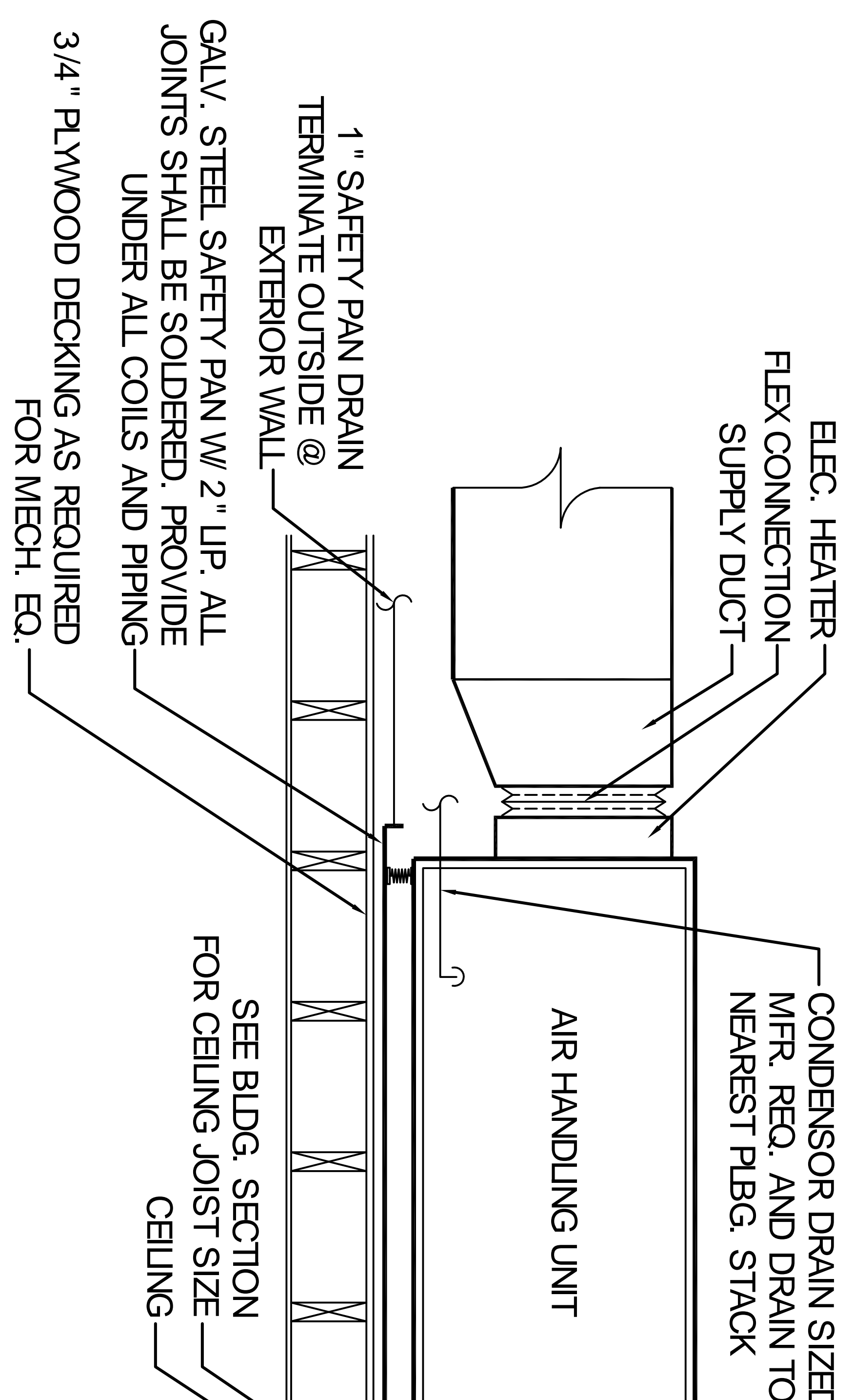


LIGHTING PLAN

SCALE: 1/4" = 1'-0"

WALK-IN COOLER NOTES:

COOLER TO BE KOLPAK, OR EQUAL, NOMINAL DIMENSIONS AS SHOWN ON PLANS, SYSTEM, START, TEST, OPERATE, AND DEMONSTRATE SYSTEM PRIOR TO ACCEPTANCE IN PLACE URETHANE SANDWICH BETWEEN METAL SURFACES. FOAM PLASTICS SHALL BE 26 GAUGE GALVANIZED ALUMINUM. INTERIOR WALLS AND CEILING TO BE 22 GAUGE EMBOSSED GALVANIZED ALUMINUM. EXPOSED EXTERIOR WALLS TO BE 22 GAUGE ST 1/8" THICK ALUMINUM TREAD PLATE. EXPOSED EXTERIOR WALLS TO BE 22 GAUGE ST 3/4"x7/8", WITH CYLINDER LOCK AND INSIDE SAFETY RELEASE HANDLE. UNIT TO HAVE LINES, MATCHING CLOSURE TRIM, SKIRTS, BASE COVER, ETC. PROVIDE STANDARD AIR-COOLED. PROVIDE COPPER CONDENSATION AND DRAIN LINES. PROVIDE PROPER FITTINGS, ETC. PROVIDE STANDARD 10-YEAR PANEL WARRANTY AND 5-YEAR REFRIG MAINTENANCE INSTRUCTIONS.



TYPICAL HORIZONTAL AHU

SCALE: N.T.S.