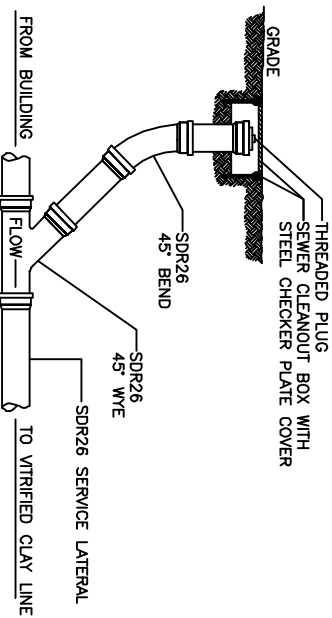
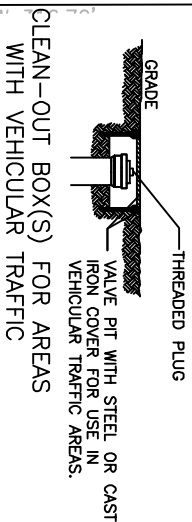


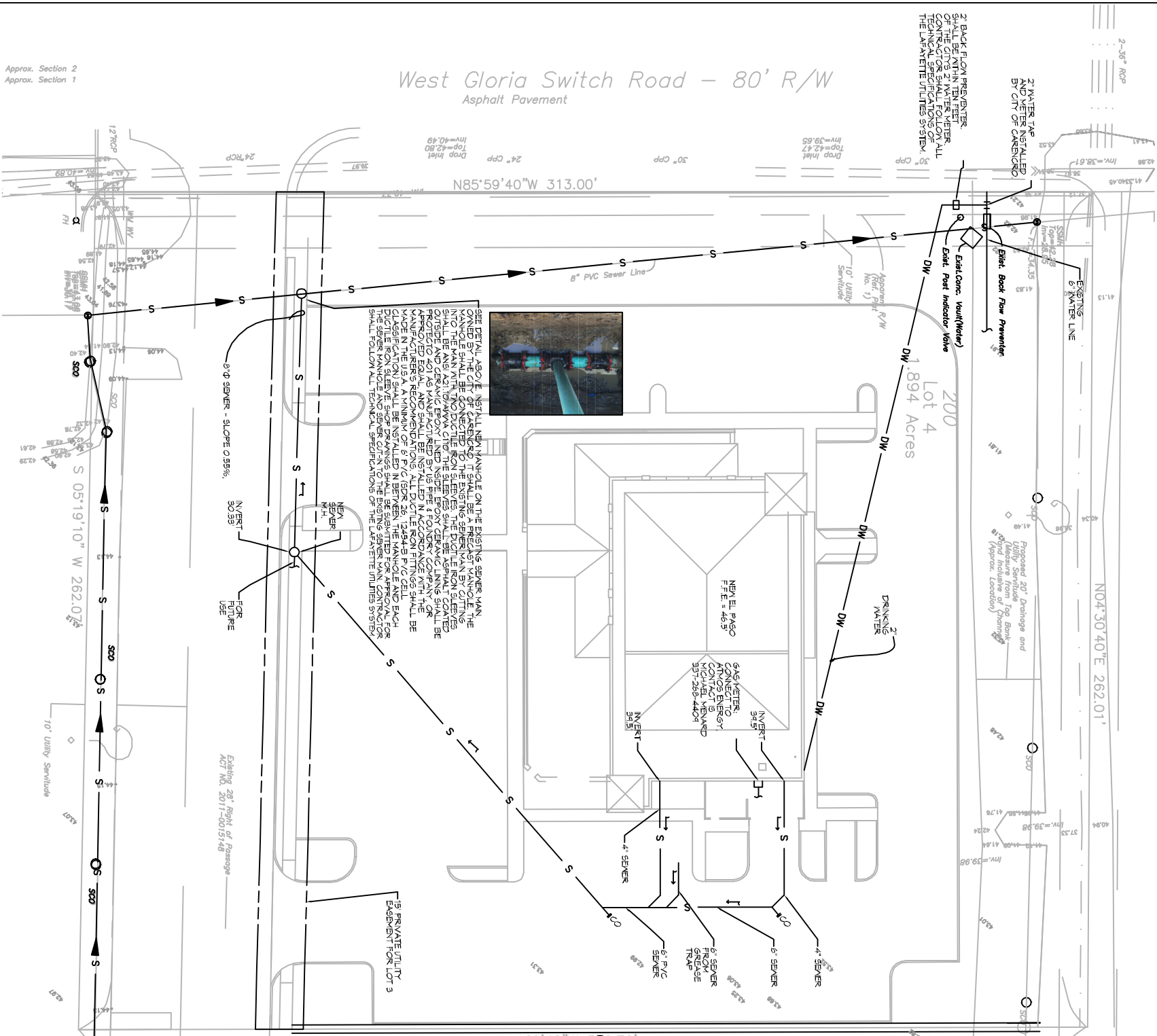
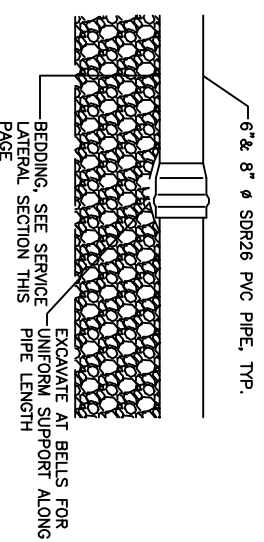
GENERAL NOTES UTILITIES

1. ALL CONSTRUCTION SHALL COMPLY WITH ALL APPLICABLE LOCAL, STATE, AND FEDERAL STANDARDS AND REGULATIONS.
2. CONSTRUCTION SHALL NOT START UNTIL ALL MUNICIPALITIES ARE NOTIFIED AS NOT TO INTERRUPT EXISTING UTILITIES.
3. ALL DISTURBED GROUND SHALL BE RESTORED IN KIND TO A CONDITION EQUAL TO OR BETTER THAN ORIGINALLY FOUND.
4. SOIL EROSION CONTROL SHALL BE IN ACCORDANCE WITH THESE DOCUMENTS.
5. PROTECT EXISTING UTILITY LINES FROM DAMAGE. FOLLOW INDIVIDUAL UTILITIES' RECOMMENDATIONS FOR UTILITY LINE PROTECTION.
6. CONTRACTOR SHALL IMMEDIATELY REPORT ALL DAMAGE TO UTILITY LINES TO BOTH UTILITY COMPANY AND ENGINEER.
7. ALL DAMAGE CAUSED TO EXISTING UTILITY LINES BY CONTRACTOR'S OPERATIONS SHALL BE REPAIRED BY THE CONTRACTOR TO COMPLETE SATISFACTION OF THE UTILITY COMPANY AND ENGINEER.
8. LOCATION OF EXISTING UTILITIES IS APPROXIMATE. CONTRACTOR SHALL FIELD VERIFY EXACT LOCATIONS.
9. CONTRACTOR IS RESPONSIBLE FOR CUT AND CAP OF EXISTING UTILITIES PRIOR TO ANY DEMOLITION.
10. CONTRACTOR SHALL CONTACT LOUISIANA ONE CALL PRIOR TO COMMENCEMENT OF SITE EXCAVATION.



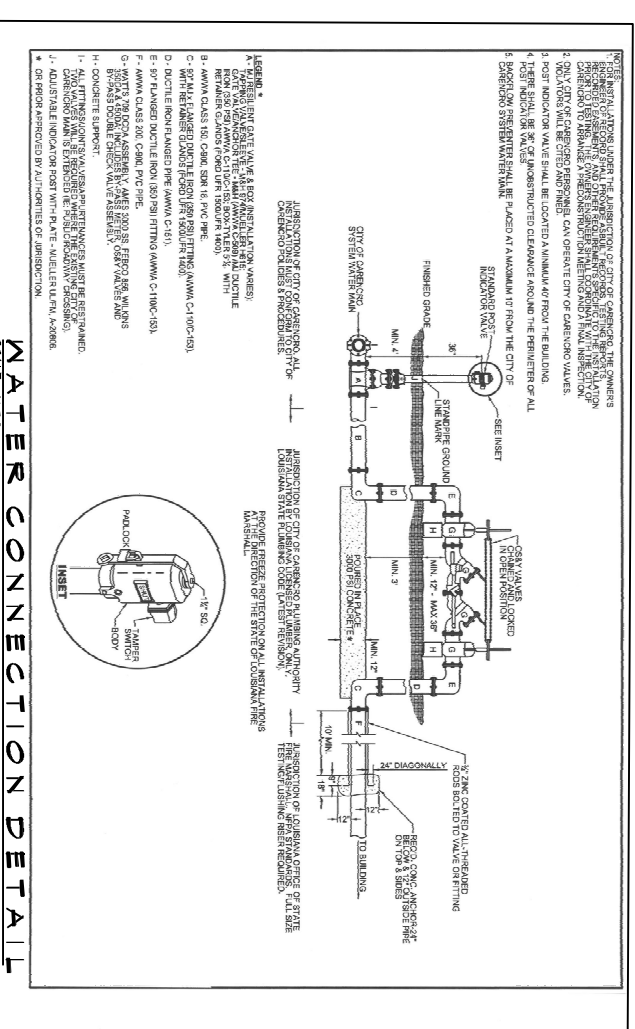
SEWER CLEANOUT DETAIL

SERVICE LATERAL DETAIL



Approx. Section 2
Approx. Section 1

1" SEWER, WATER AND GAS CONNECTIONS
SCALE: 1/4" = 1'-0"



WATER CONNECTION DETAIL
SCALE: 1/2" = 1'-0"



DAMMON ENGINEERING, INC.
551 Old Spanish Trail Slidell, La 70158 (504) 649-5832

DRAINAGE ANALYSIS FOR THE EL PASO MEXICAN RESTAURANT
200 WEST GLORIA SWITCH ROAD
CARENCRO, LA 70520

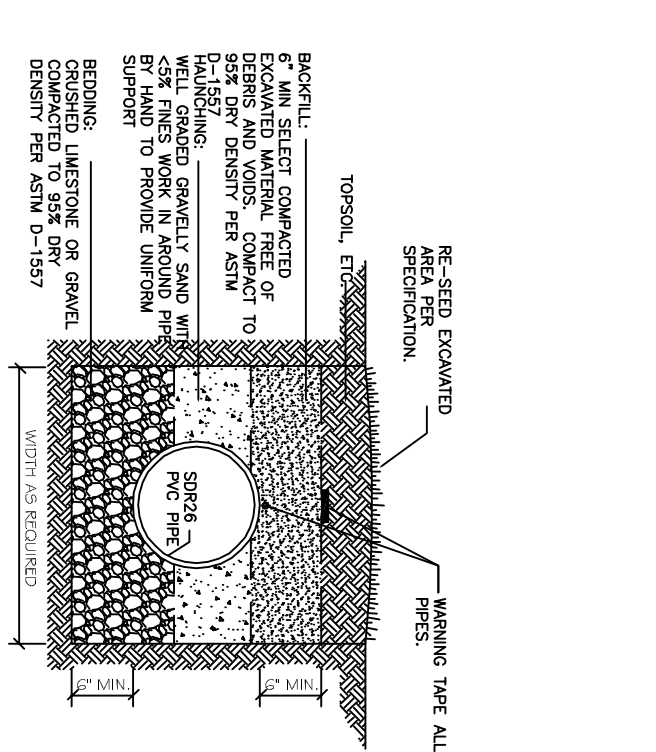
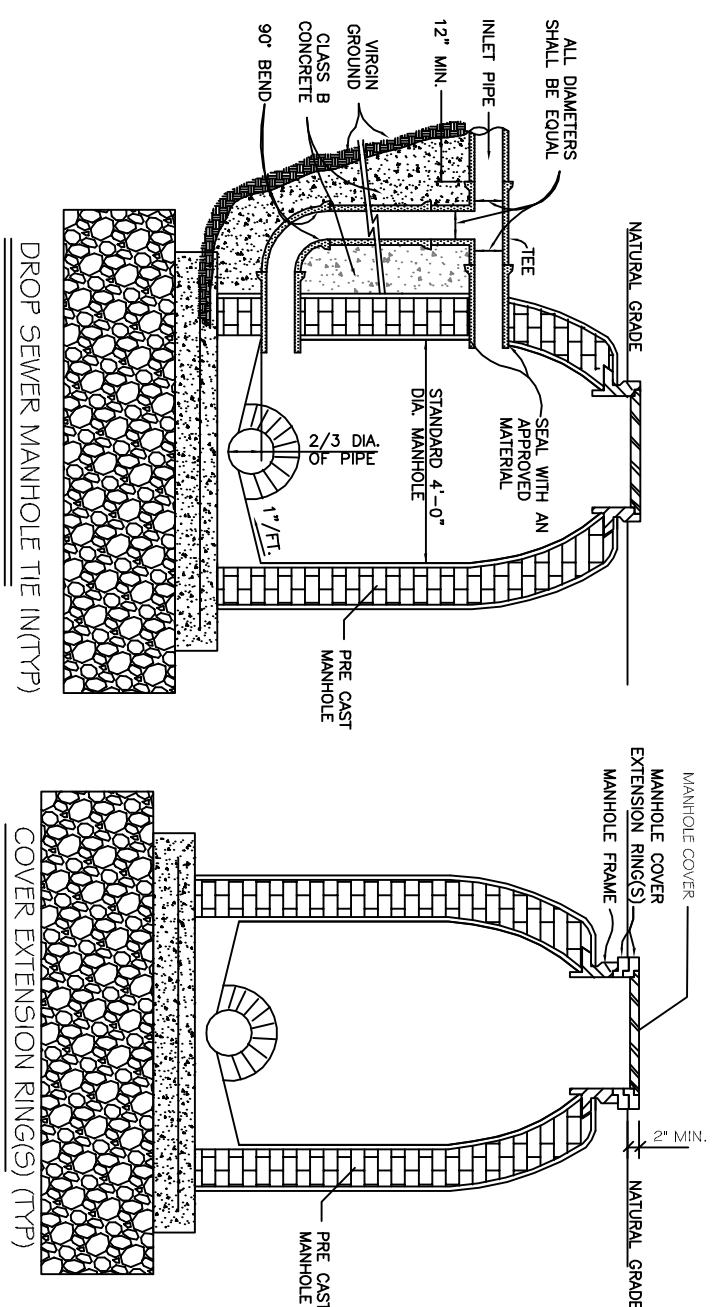
JOB No:	2269	DATE:	6/27/2016
DRAWN BY:	CKD	CHECKED BY:	BAM

CHIEF ENGINEER: BRIAN A. MISTICH, P.E.
554 OLD SPANISH TRAIL
SLIDELL, LA 70458

dammonengineering.com
info@dammonengineering.com
PHONE: 985-649-5832

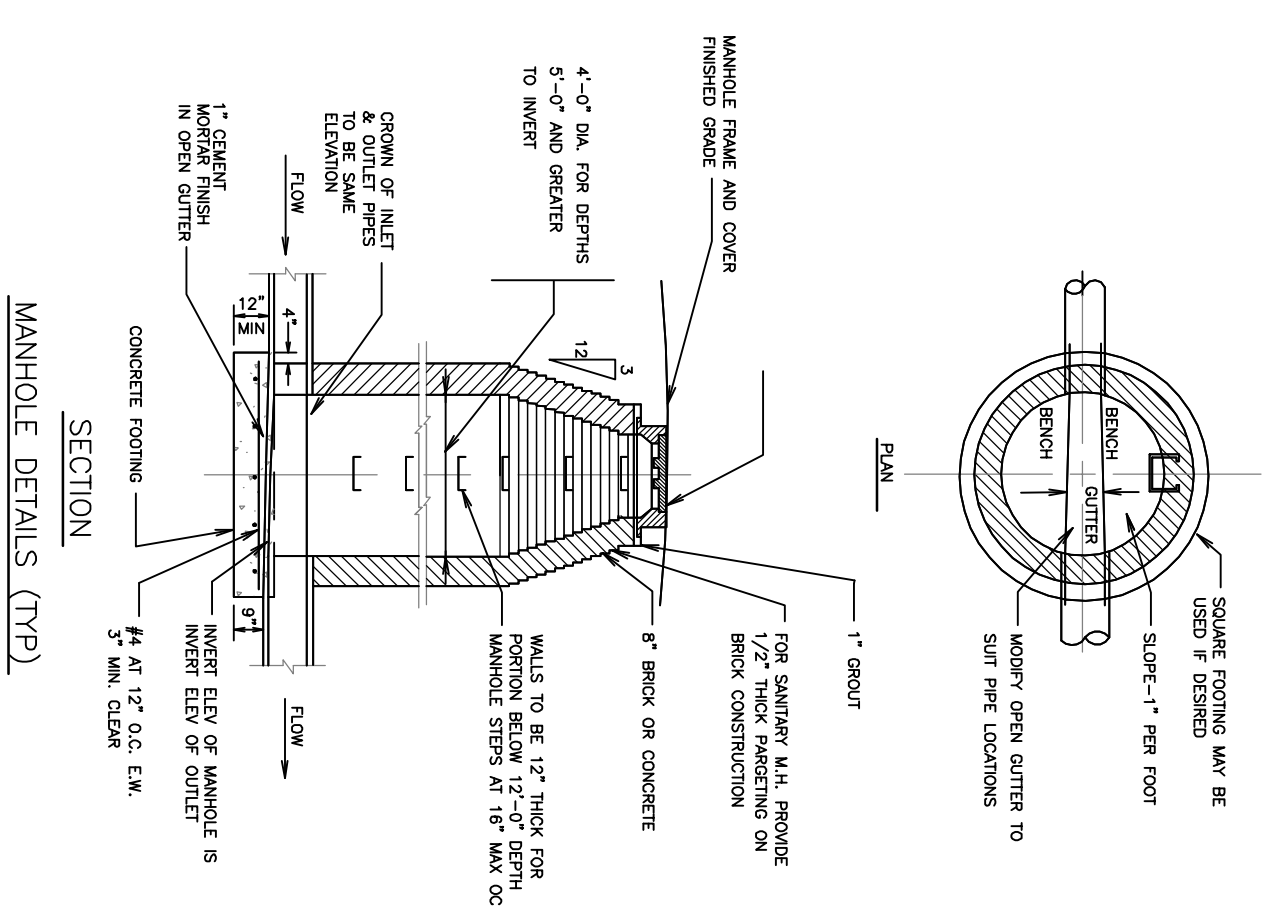
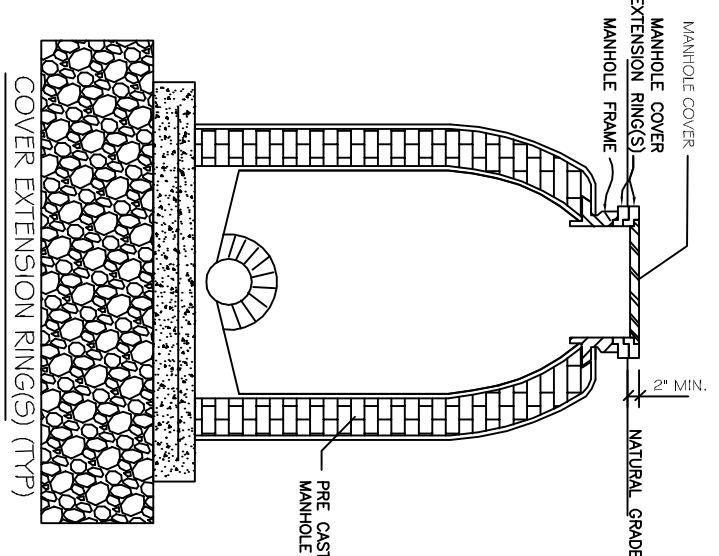
02.1

SEWER, WATER & GAS PLAN



NOTE:
 CONTRACTOR SHALL PROVIDE SHEETING AND BRACING TO CONTROL THE WIDTH OF EXCAVATED TRENCH AND TO SAFEGUARD THE INTEGRITY OF THE SEWER TRENCH. CONTRACTOR SHALL PROVIDE SUFFICIENT SHEETING AND BRACING TO PROVIDE SAFE WORKING CONDITIONS FOR HIS WORKMEN.

SERVICE LATERAL SECTION (TYP)



MANHOLE DETAILS (TYP)

02.2

MANHOLE DETAILS
 DRAINAGE ANALYSIS FOR THE
EL PASO MEXICAN RESTAURANT
 200 WEST GLORIA SWITCH ROAD
 CARENCRO, LA 70520



JOB No:	2269	DATE:	6/27/2016
DRAWN BY:	CKD	CHECKED BY:	BAM



DAMMON ENGINEERING, INC.

554 Old Spanish Trail Slidell, La 70458 (504) 649-5832

CHIEF ENGINEER: BRIAN A. MISTICH, P.E.
 554 OLD SPANISH TRAIL
 SLIDELL, LA 70458

dammonengineering.com
 info@dammonengineering.com
 PHONE: 985-649-5832