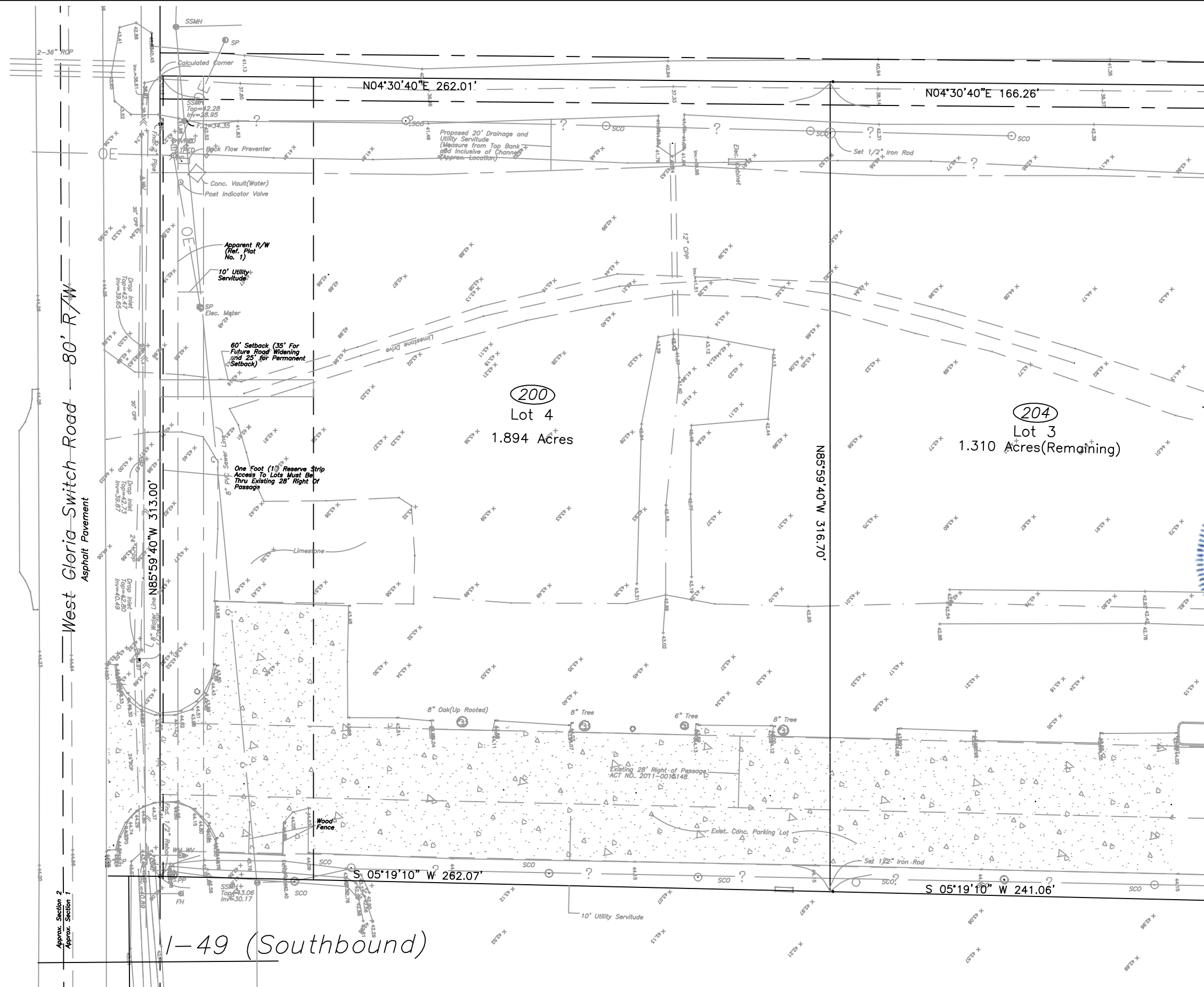




1 PRE-DEVELOPMENT SURVEY  
SCALE: 1"=40'

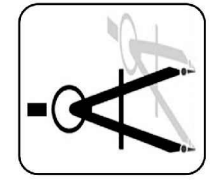


DRAINAGE ANALYSIS FOR THE  
**EL PASO MEXICAN RESTAURANT**  
200 WEST GLORIA SWITCH ROAD  
CARENCRO, LA 70520

PRE-DEVELOPMENT SURVEY

C1.0

JOB No: 2269 DATE: 9/11/2019  
DRAWN BY: DD CHECKED BY: BAM



**DAMMON**  
ENGINEERING, INC.

554 Old Spanish Trail Sidel, LA 70458 (985) 649-5832  
dammonengineering.com  
info@dammonengineering.com  
PHONE: 985-649-5832  
CHIEF ENGINEER: BRIAN A. MISTICH, P.E.  
554 OLD SPANISH TRAIL  
SIDELL, LA 70458