

ACCESSIBILITY NOTES

DOOR CLEARANCE NOTES
ALCOVES SHALL COMPLY WITH THE CLEARANCES FOR FRONT APPROACHES, 31/6002 - 3K/6002.
DOOR HARDWARE SHALL BE LEVER TYPE.
MAX DOOR OPENING FORCE:
INTERIOR HINGED DOORS: 5 LBF
EXTERIOR HINGED DOORS: 8.5 LBF
SLIDING OR FOLDING DOORS: 5 LBF
FIRE DOORS SHALL HAVE THE MINIMUM OPENING FORCE ALLOWABLE BY THE APPROPRIATE ADMINISTRATIVE AUTHORITY.
HARDWARE REQUIRED FOR ACCESSIBLE DOOR PASSAGE SHALL BE MOUNTED NO HIGHER THAN 48" AND NOT LESS THAN 34" ABOVE FINISHED FLOOR.
THE FLOOR OR GROUND AREA WITHIN THE REQUIRED CLEARANCES SHALL BE LEVEL AND CLEAR.
THRESHOLDS AT DOORWAYS SHALL NOT EXCEED 3/4" IN HEIGHT FOR EXTERIOR SLIDING DOORS OR 1/2" FOR OTHER TYPES OF DOORS. RAISED THRESHOLDS AND FLOOR LEVEL CHANGES AT ACCESSIBLE DOORWAYS SHALL BE BEVELED WITH A SLOPE NO GREATER THAN 1:2.
DOORWAYS SHALL HAVE A MINIMUM CLEAR OPENING OF 32" WITH THE DOOR OPEN 90°, MEASURED BETWEEN THE FACE OF THE DOOR AND THE OPPOSITE STOP. OPENINGS MORE THAN 24" IN DEPTH SHALL MAINTAIN 32" MIN CLEARANCE.

RAMP NOTES
THE CLEAR SPACE BETWEEN THE HANDRAIL AND THE WALL SHALL BE MIN 1-1/2" CLEAR.
GRIPPING SURFACES SHALL BE CONTINUOUS AND UNOBSTRUCTED.
ENDS OF HANDRAILS SHALL BE EITHER ROUNDED OR RETURNED SMOOTHLY TO FLOOR, WALL, OR POST.
HANDRAILS SHALL NOT ROTATE WITHIN THEIR FITTINGS.
THE CROSS SLOPE OF RAMP SURFACES SHALL BE NO GREATER THAN 1:50.
OUTDOOR RAMPS AND THEIR APPROACHES SHALL BE DESIGNED SO THAT WATER WILL NOT ACCUMULATE ON WALKING SURFACES.
RAMPS AND LANDINGS WITH DROP-OFFS SHALL HAVE CURBS, WALLS, RAILINGS, OR PROJECTING SURFACES THAT PREVENT PEOPLE FROM SLIPPING OFF THE RAMP. CURBS SHALL BE A MINIMUM OF 2" HIGH.
HANDRAILS SHALL BE PROVIDED ALONG BOTH SIDES OF RAMP SEGMENTS. THE INSIDE HANDRAIL ON SWITCHBACK OR DOGLEG RAMPS SHALL ALWAYS BE CONTINUOUS.
RAMP LANDINGS SHALL BE AT LEAST AS WIDE AS THE RAMP RUN LEADING TO IT.

GENERAL SITE ACCESSIBILITY NOTES

1. ACCESSIBILITY SIGNAGE SHALL COMPLY WITH ADAAG 2010 GUIDELINES SECTION 703.7.
2. ALL ACCESSIBLE PARKING SPACES AND AISLES THAT SERVE THEM SHALL COMPLY WITH ADAAG 2010 GUIDELINES SECTIONS 502.4 AND 502.5.
3. OPENINGS IN GROUND SURFACES SHALL COMPLY WITH ADAAG 2010 GUIDELINES SECTION 302.3.
4. VERTICAL CHANGES IN ELEVATION ALONG ALL ACCESSIBLE ROUTES SHALL COMPLY WITH ADAAG 2010 GUIDELINES SECTIONS 303.2, 303.3, AND 303.4.
5. PARKING SPACES DESIGNATED AS ACCESSIBLE SHALL INCLUDE THE INTERNATIONAL SYMBOL OF ACCESSIBILITY COMPLYING WITH ADAAG 2010 GUIDELINES SECTIONS 703.7.2.1 AND 302.6.
6. ALL ACCESSIBLE PARKING SPACES AND ROUTES SERVING THEM SHALL HAVE A ROUGH, SLIP-RESISTANT SURFACE OR LIGHT BROOM FINISH IN COMPLIANCE WITH ADAAG 2010 GUIDELINES SECTION 302.1.

DAMMON ENGINEERING, INC.
LOUISIANA & MISSISSIPPI

Chief Engineer: Brian Misch, PE
554 Old Spanish Trail
Slidell, LA 70458

www.dammoneengineering.com
info@dammoneengineering.com
PH: 985.649.5832

| REVISIONS | DATE | DESCRIPTION |
|-----------|------|-------------|
| | | |
| | | |
| | | |
| | | |

SEAL:

NEW PREP FACILITY
OLD TOWN
KITCHEN

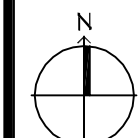
SHEET TITLE:
ACCESSIBILITY
INFORMATION

DRAWING NUMBER:
G102

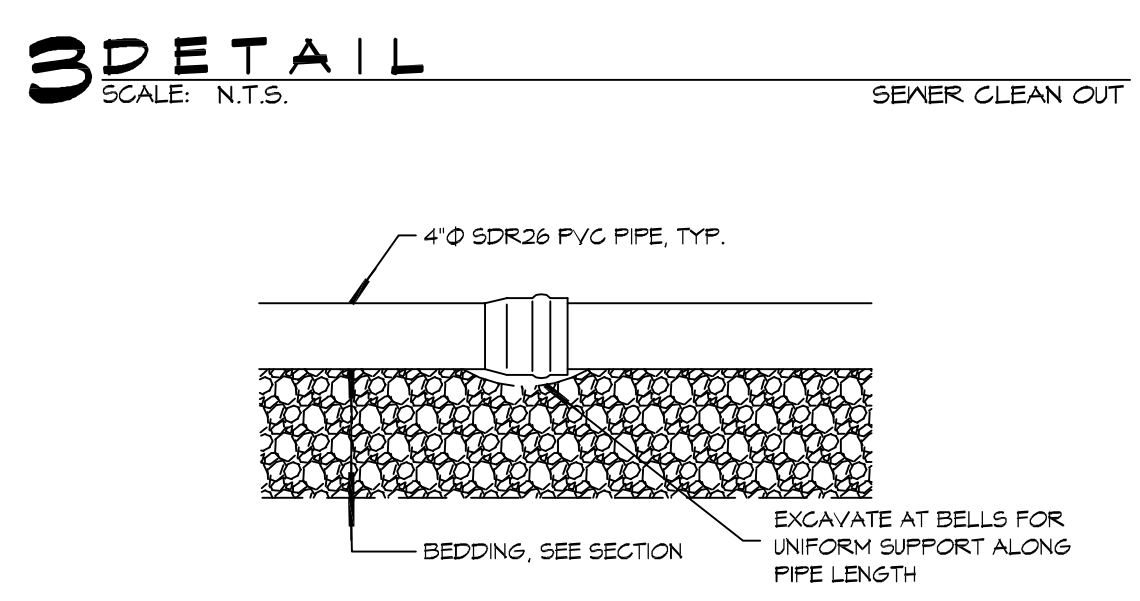
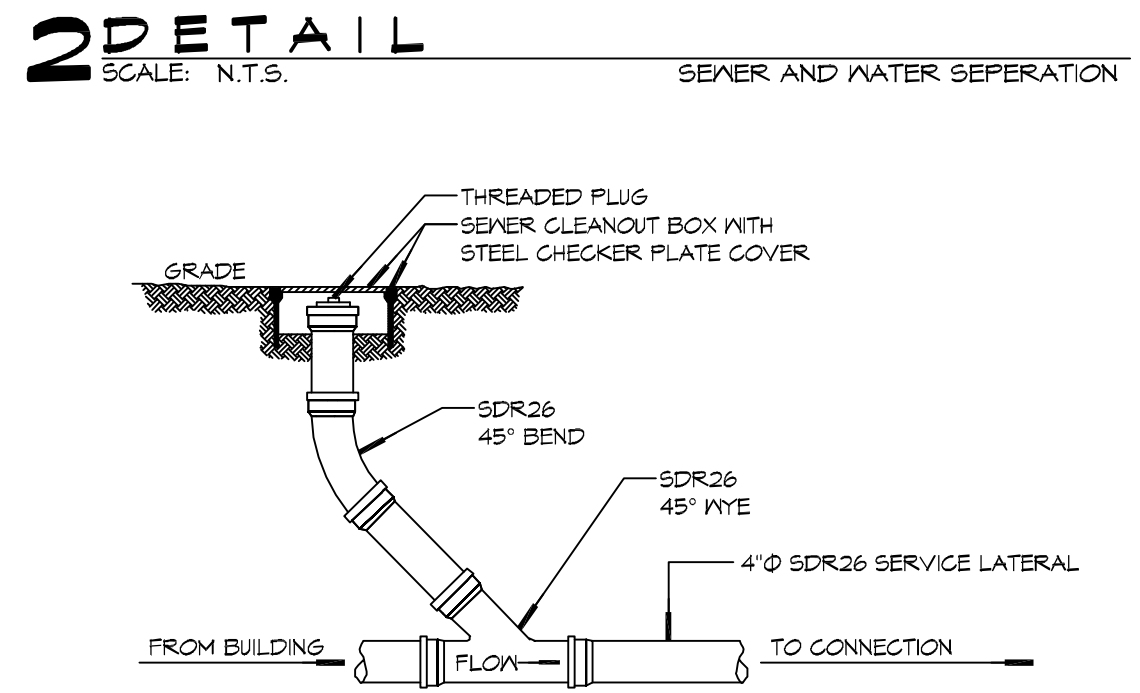
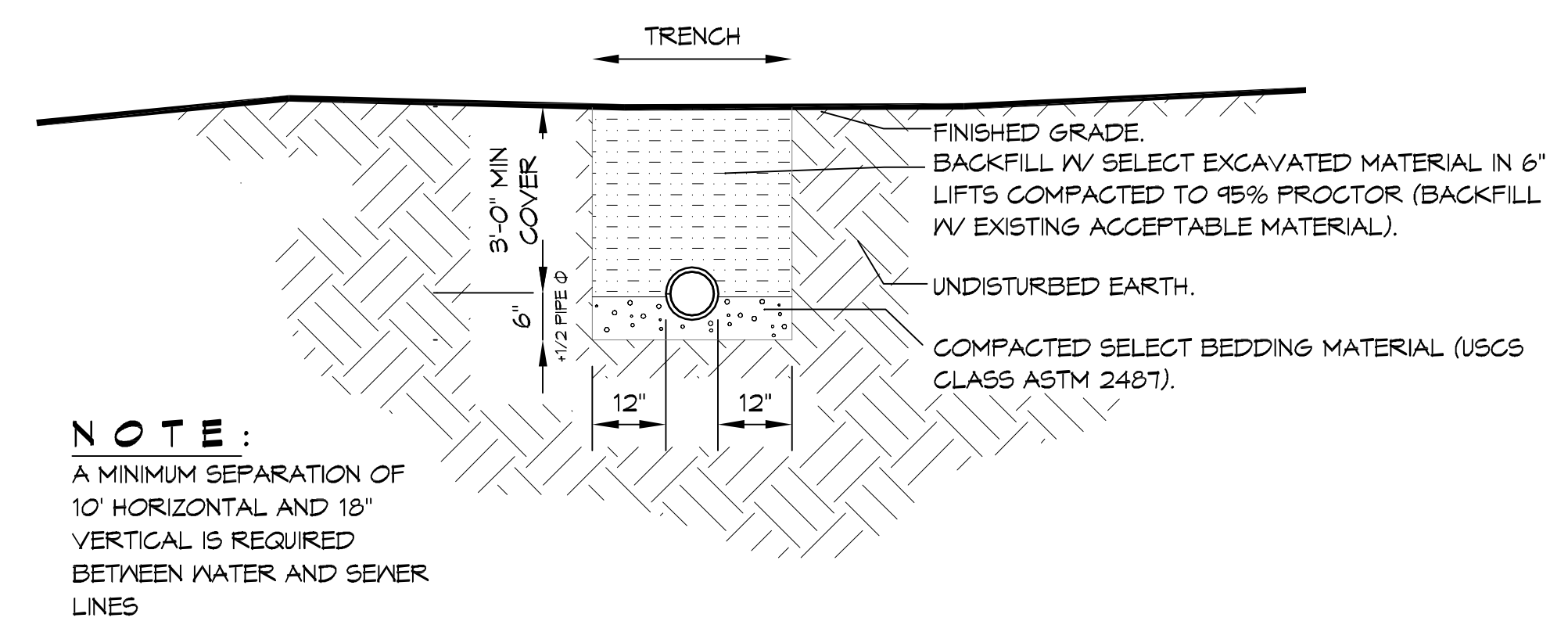
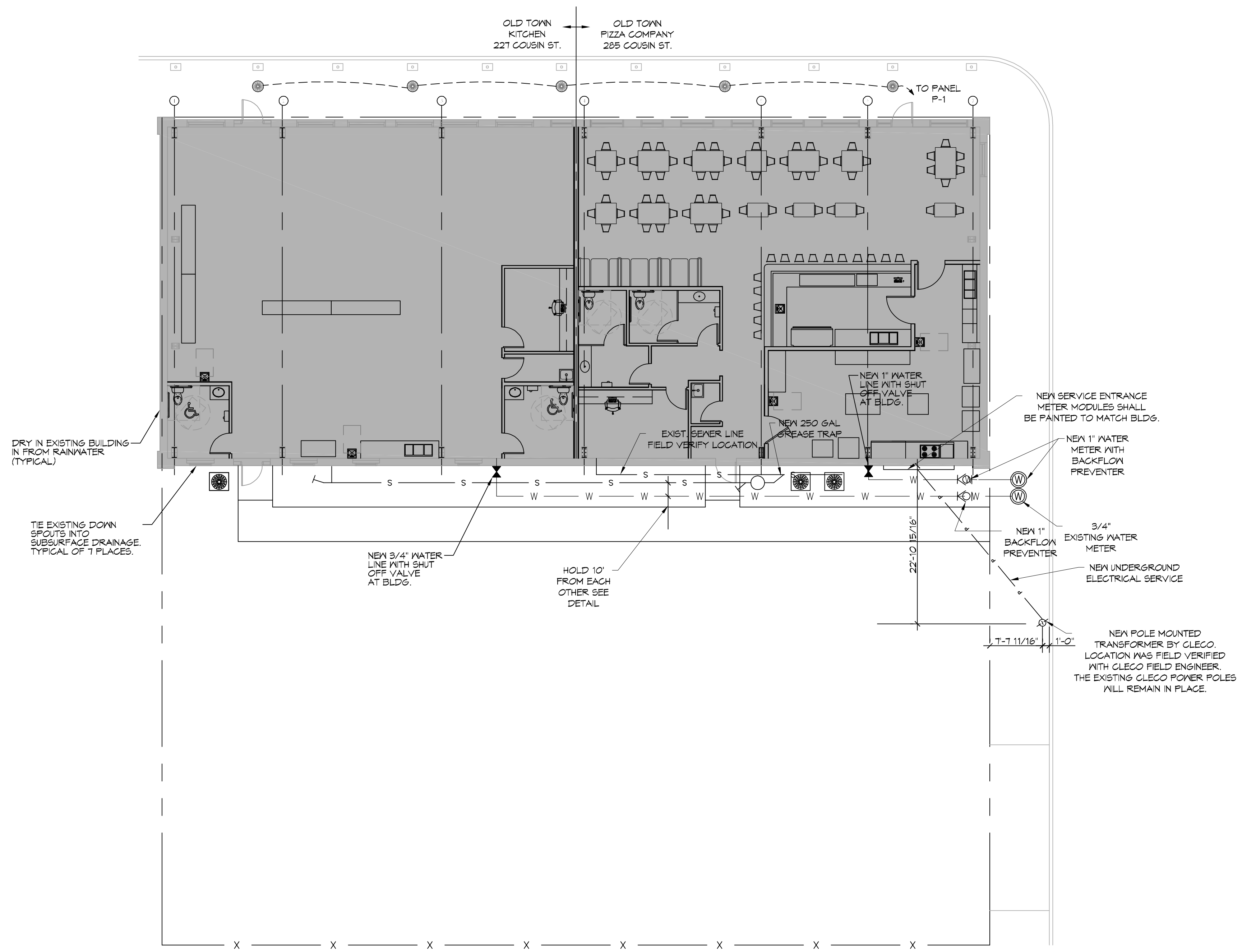
227 COUSIN STREET
SLIDELL, LA 70458

JOB No: 2224 | DATE: 11-21-17
DRAWN BY: CKD | CHECKED BY: CKD

FILE NAME: J:\PROJECTS\1324 - Old Town Kitchen\Drawing\Sheet\Sheet C102.dwg
 PLOT DATE: 11/21/17
 PLOT TIME: 10:13:35 AM
 PLOT USER: brian.mistich



1 SITE UTILITY PLAN
SCALE: 1"=10'-0"



GENERAL SITE NOTES

1. PROVIDE ALL LABOR, MATERIAL AND EQUIPMENT FOR A COMPLETE OPERATING SYSTEM. CONTRACTOR IS TO FIELD VERIFY ALL EXISTING UTILITY LOCATIONS, ELEVATIONS, AND INVERTS PRIOR TO COMMENCING ANY WORK. CONTRACTOR SHALL PAY NECESSARY FEES FOR THE UTILITIES CONNECTIONS.
2. CONTRACTOR TO BE RESPONSIBLE TO VERIFY ANY INVERTS AND SET NEW INVERTS OF SEWAGE AND DRAINAGE PIPES.
3. ALL WORK AND MATERIAL TO COMPLY STRICTLY TO THE LATEST LOCAL CITY PARISH, STATE, AND NATIONAL GOVERNING CODES.
4. SEWAGE LINES 3" AND SMALLER SHALL BE SLOPED 1/4" PER FOOT AND LINES THAT ARE 4" AND LARGER SHALL BE SLOPED 1/8" PER FOOT.
10. CONTRACTOR SHALL CONTACT LOUISIANA ONE CALL PRIOR TO COMMENCEMENT OF SITE EXCAVATION.

SITE UTILITIES LEG

— W — NEW WATER LINE
 — S — NEW SEWER LINE
 — P — NEW ELECTRICAL LINE

DAMMON ENGINEERING, INC.
 LOUISIANA & MISSISSIPPI
 Chief Engineer: Brian Mistich, PE
 554 Old Spanish Trail
 Slidell, LA 70468
 www.dammonengineering.com
 info@dammonengineering.com
 PH: 985.649.9832

| # | DESCRIPTION | DATE |
|---|-------------|------|
| | | |
| | | |
| | | |
| | | |



NEW PREP FACILITY
 OLD TOWN KITCHEN
 227 COUSIN STREET
 SLIDELL, LA 70468
 JOB No: 2224 | DATE: 11-21-17
 DRAWN BY: C&D | CHECKED BY: C&D

SHEET TITLE:
 SITE UTILITY PLAN
 DRAWING NUMBER:
C102
 SHEET No: 4 of 4

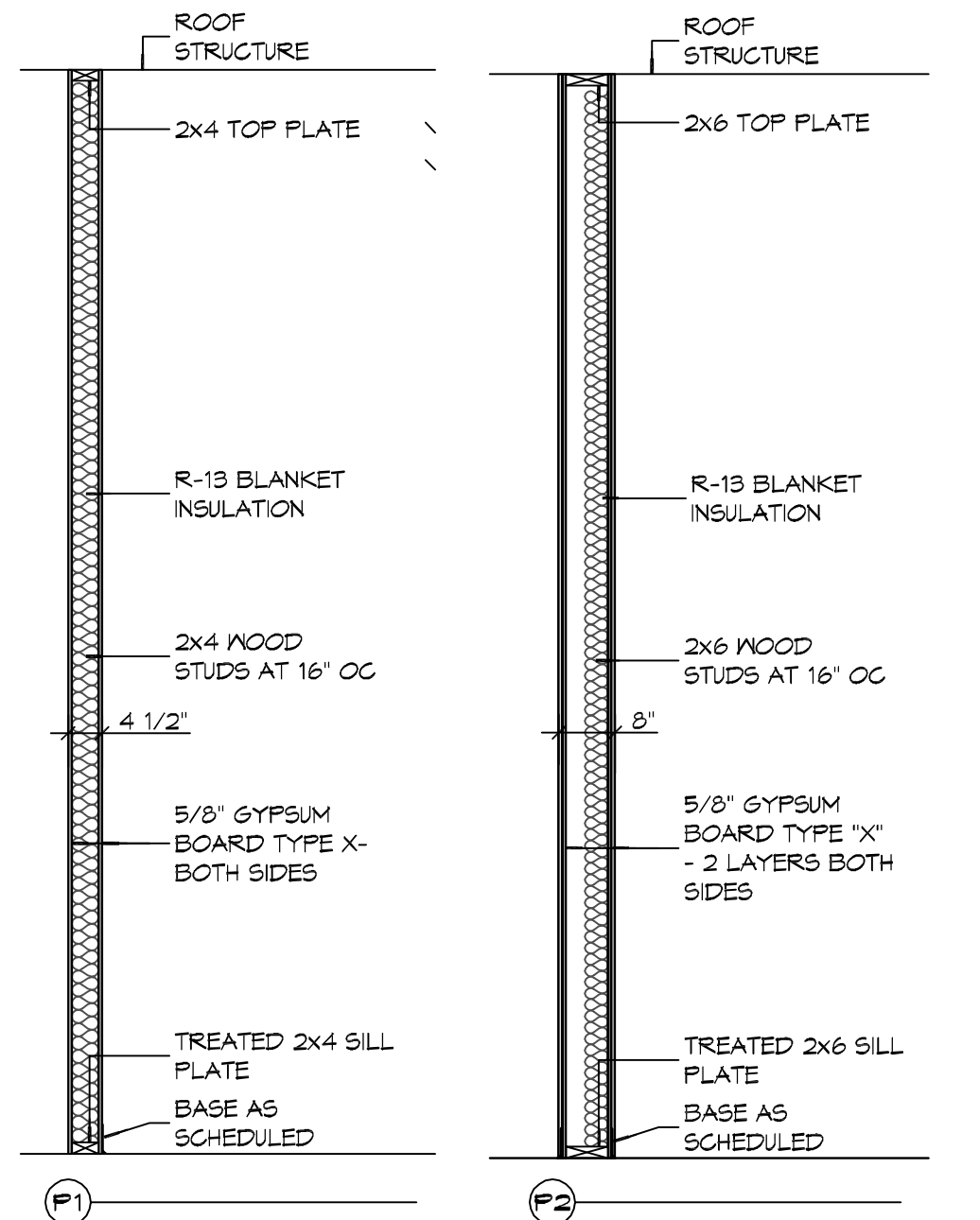
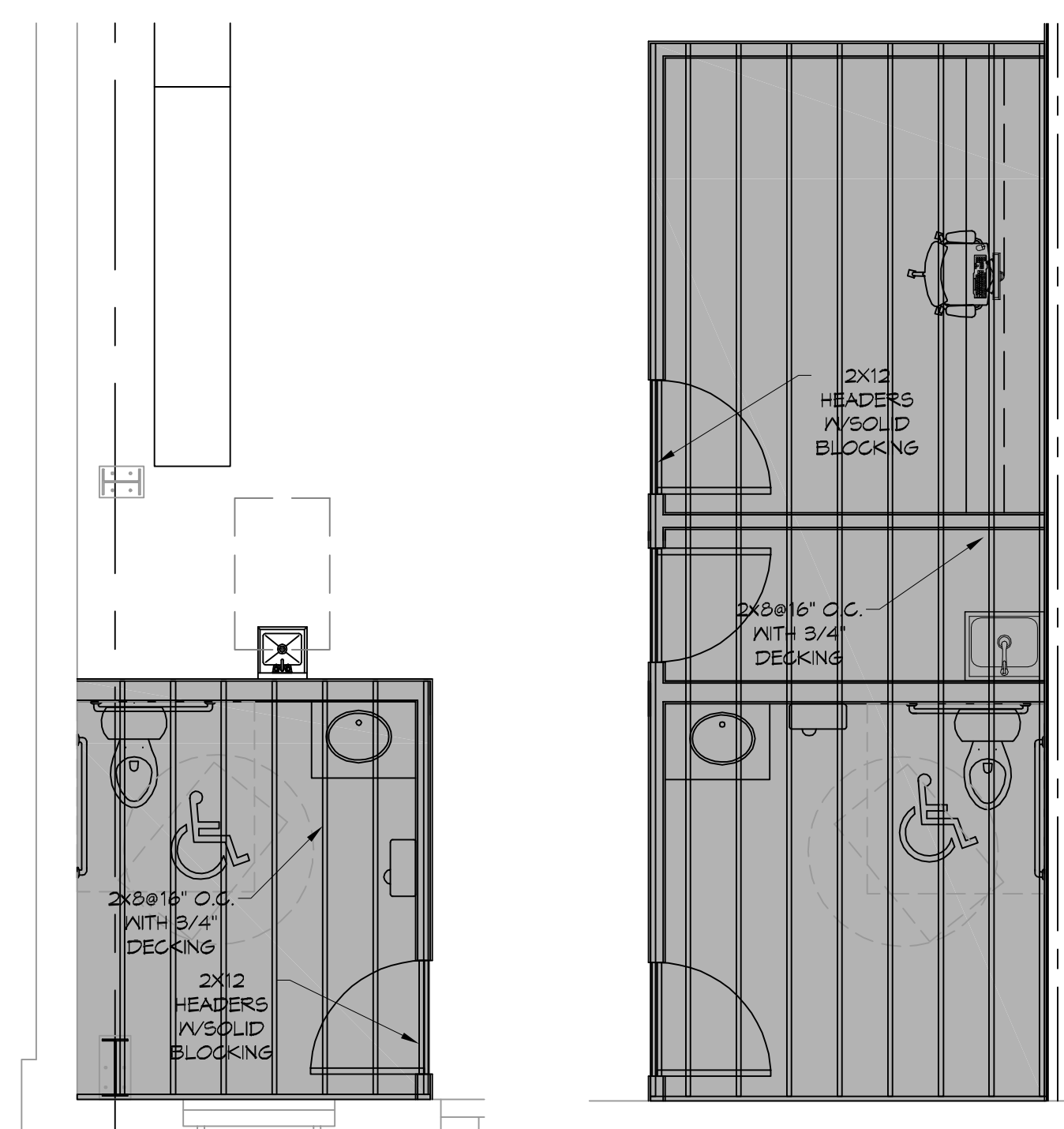
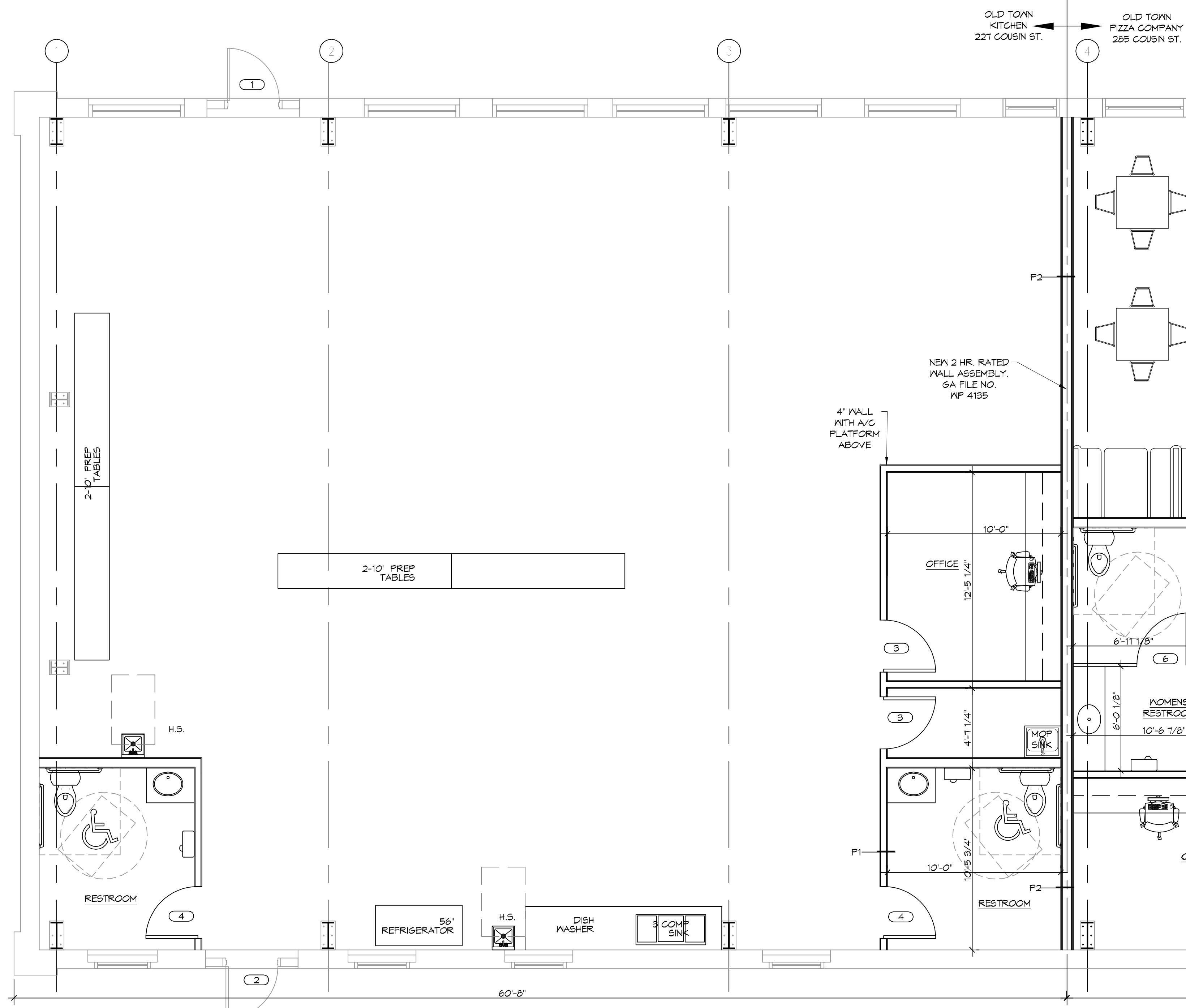
| FINISH SCHEDULE | | | | | |
|-----------------|---------|---------|-------------|----------------|--------------------|
| ROOM NAME | FLOOR | BASE | WALL | CEILING | REMARKS |
| OFFICE | VCT | VINYL | 5/8" GYP BD | 8' 5/8" GYP BD | |
| RESTROOMS | CERAMIC | CERAMIC | 5/8" GYP BD | 8' 5/8" GYP BD | MOISTURE RESISTANT |
| PREP AREA | CERAMIC | VINYL | FURLINS | FURLINS | OPEN CEILING |

- NOTE:
- TOP EXISTING FOUNDATION WITH 2" LIGHTWEIGHT CONCRETE. CONCRETE MIX SHALL HAVE A MINIMUM COMPRESSIVE STRENGTH OF 3000 PSI AT 28 DAYS. CONCRETE MIX SHALL BE IN ACCORDANCE WITH ACI-318.
 - DRILL 5/8" HOLES INTO EXISTING SLAB WITH A MAXIMUM SPACING OF 36" O.C.
 - USE WAF 6x6 D2.RND2.9 WHEN CONCRETE THICKNESS IS GREATER THAN 2" BUT LESS THAN 4" AND 6x6 D6x6 WHEN CONCRETE IS GREATER THAN 4". ALL CONVENTIONAL REINFORCING STEEL SHALL MEET ASTM-A615 (GRADE 60).
 - INSTALL ONE LAYER OF POLYETHYLENE VAPOR BARRIER PLACED UNDER ALL CONCRETE. VAPOR RETARDER TO BE MINIMUM 15 MIL THICKNESS; ASTM E 1745 CLASS A, PERMEANCE LESS THAN 0.01 PERMS, EQUAL TO STEGO INDUSTRIES STEGO WRAP, ECOSHIELD-E 15 MIL BY EPRO, OR IRONBAR 15 BY FLATIRON FILMS. PROVIDE APPROPRIATE ACCESSORIES FOR A COMPLETE SYSTEM.

| DOOR SCHEDULE | | | | | | | | | |
|---------------|-------|--------|--------|------------|-----------|----|--|--|--|
| MK | WIDTH | HEIGHT | THK | DOOR MAT | FRAME MAT | FR | REMARKS | | |
| 1 | 3'-0" | 6'-8" | 1-3/4" | METAL | STEEL | NR | EXISTING TO REMAIN, CLOSURE, WEATHER STRIP, | | |
| 2 | 3'-0" | 6'-8" | 1-3/4" | H. M. | H.M. | NR | EXISTING TO REMAIN, NEW DOOR CLOSURE, WEATHER STRIP, AND KEYPAD HANDLED LOCK | | |
| 3 | 3'-0" | 6'-8" | 1-3/4" | SOLID CORE | WOOD | NR | WITH HANDLE TYPE LEVER, PRIVACY LOCK | | |
| 4 | 3'-0" | 6'-8" | 1-3/4" | SOLID WOOD | WOOD | NR | WITH DOOR CLOSURE, HANDLE TYPE LEVER, PRIVACY LOCK | | |

GENERAL FLOORPLAN NOTES

- MEDICAL GAS AND MEDICAL GAS INFRASTRUCTURE WILL NOT BE PROVIDED FOR THIS PROJECT.
- INSULATION AND INSULATION ASSEMBLIES SHALL MEET THE REQUIREMENTS OF IBC 2012 SECTION T19.
 - CONCEALED INSULATION SHALL HAVE A FLAME SPREAD OF 0-25 AND SMOKE DEVELOPED INDEX OF 0-450, EXCEPT THAT IN COMBUSTIBLE (WOOD FRAME) CONSTRUCTION.
 - FACING SHALL COMPLY WITH IBC 2012.
- ALL MATERIALS SHALL BE NEW AND UL LISTED.
- NO WORK SHALL BE CONCEALED UNTIL APPROVED BY LOCAL INSPECTORS.
- CONTRACTOR TO GUARANTEE WORK FOR ONE YEAR FROM DATE OF SUBSTANTIAL COMPLETION.
- CONTRACTOR SHALL FURNISH WATER AND POWER FROM EXISTING SOURCES.
- EXTERIOR CAULKING SHALL BE THICK CAULK.
- PAINT SHALL BE SHERWIN WILLIAMS OR EQUIVALENT AND APPROPRIATE FOR THE SUBSTRATE TO WHICH IT IS APPLIED AS RECOMMENDED BY PAINT MANUFACTURER. ALL WORK TO RECEIVE THREE COATS (ONE PRIMER COAT, TWO FINISH COATS) UNLESS OTHERWISE RECOMMENDED BY PAINT MANUFACTURER. COLORS TO BE SELECTED BY OWNER.
- PROVIDE CLEANUP ON A REGULAR BASIS. NO TRASH SHALL BE STORED INSIDE BUILDING PREMISES.
- ALL BATT INSULATION SHALL HAVE A CLASS "A" (0-25) FLAME SPREAD IN COMPLIANCE WITH IBC 2012.
- USE 2x6 STUDS, OR TWO 2x4 STAGGERED STUDS WITH 2x6 SILL PLATE AT ALL WALLS WHERE 4" PIPE IS INDICATED. SEE PLUMBING RISER DIAGRAM FOR PIPE SIZE.
- PROVIDE GALVANIZED METAL PAN WITH DRAIN AT ALL WATER HEATERS.
- ALL FLOORING SHALL MEET OR EXCEED ADA GUIDELINES REQUIREMENTS FOR SLIP RESISTANCE.
- INTERIOR LOCKS ON DOORS IN MEANS OF EGRESS SHALL NOT REQUIRE THE USE OF A KEY, SPECIAL KNOWLEDGE, OR SPECIAL DEVICE TO OPEN IN THE DIRECTION OF EGRESS. ALL DOORS SHALL HAVE LEVER TYPE HANDLES.
- INTERIOR WALLS AND CEILINGS SHALL HAVE A FLAME SPREAD OF 0-200 AND A SMOKE DEVELOPMENT RATING OF 0-450.
- ALL WORK SHALL COMPLY WITH THE LATEST EDITION OF ALL LOCAL, STATE, AND NATIONAL CODES COVERING THE TYPE OF WORK BEING PERFORMED.
- PROVIDE PORTABLE FIRE EXTINGUISHERS IN ACCORDANCE WITH NFPA 101 SEE APPENDIX "E" OF NFPA 101 FOR DISTRIBUTION OF EXTINGUISHERS.
- ALL FIRE WALLS SHALL EXTEND TIGHT TO ROOF DECK AND BE SEALED WITH AN APPROVED FIRE CAULK.
- ALL ELECTRICAL, MECHANICAL, AND PLUMBING MATERIALS PENETRATING FIRE WALLS SHALL BE FIRE CAULKED. (PENETRATIONS THROUGH RATED CONSTRUCTION SHALL BE SEALED WITH A MATERIAL CAPABLE OF PREVENTING THE PASSAGE OF FLAMES AND HOT GASES WHEN TESTED IN ACCORDANCE WITH ASTM-E814.)
- SERVICE COUNTERS SHALL HAVE AN ACCESSIBLE WRITING SURFACE IN COMPLIANCE WITH ADAAG ACCESSIBILITY GUIDELINES 2010, SECTION 902.3.



2 PARTITION TYPES
SCALE: SCALE = 1/2" = 1'-0"

GA FILE NO. WP 4135 GENERIC

BASE LAYER 5/8" TYPE X GYPSUM WALLBOARD OR GYPSUM VENEER BASE APPLIED AT RIGHT ANGLES TO EACH SIDE OF 2x4 WOOD STUDS 24" O.C. WITH 6D COATED NAILS, 1 1/2" LONG, 0.085" SHANK, 1/2" HEADS, 24" O.C. FACE LAYER 5/8" TYPE X GYPSUM WALLBOARD OR GYPSUM VENEER BASE APPLIED AT RIGHT ANGLES TO EACH SIDE WITH 8D COATED NAILS, 2 3/8" LONG, 0.110" SHANK 1/2" HEADS, 8" O.C.

2 HOUR FIRE 40 TO 44 STC SOUND



JOINTS STAGGERED 24" EACH LAYER AND SIDE. SOUND TESTED WITH STUDS 16" O.C. AND WITH NAILS FOR BASE LAYER SPACED 6" O.C. (LOAD BEARING)

THICKNESS: 6 1/8"
APPROX. WEIGHT: 1.2 PSF
FIRE TEST: FM WP 360, 9-27-74
SOUND TEST: NGC 2363, 4-1-70

3 TWO HOUR RATED WALL

SCALE: SCALE = 1/2" = 1'-0"

DAMMON ENGINEERING, INC.
LOUISIANA & MISSISSIPPI
Chief Engineer: Brian Mistich, PE
554 Old Spanish Trail
Slidell, LA 70468
www.dammonengineering.com
info@dammonengineering.com
PH: 985.649.9832

| # | DESCRIPTION | DATE |
|---|-------------|------|
| | | |
| | | |
| | | |

SEAL:

NEW PREP FACILITY
OLD TOWN KITCHEN
227 COUSIN STREET
SLIDELL, LA 70469
JOB No: 2524 DATE: 11-21-17
DRAWN BY: C-KD CHECKED BY: C-KD

SHEET TITLE:
FLOOR PLAN
DRAWING NUMBER:
A101
SHEET No: 5 of 9

GENERAL HVAC NOTES

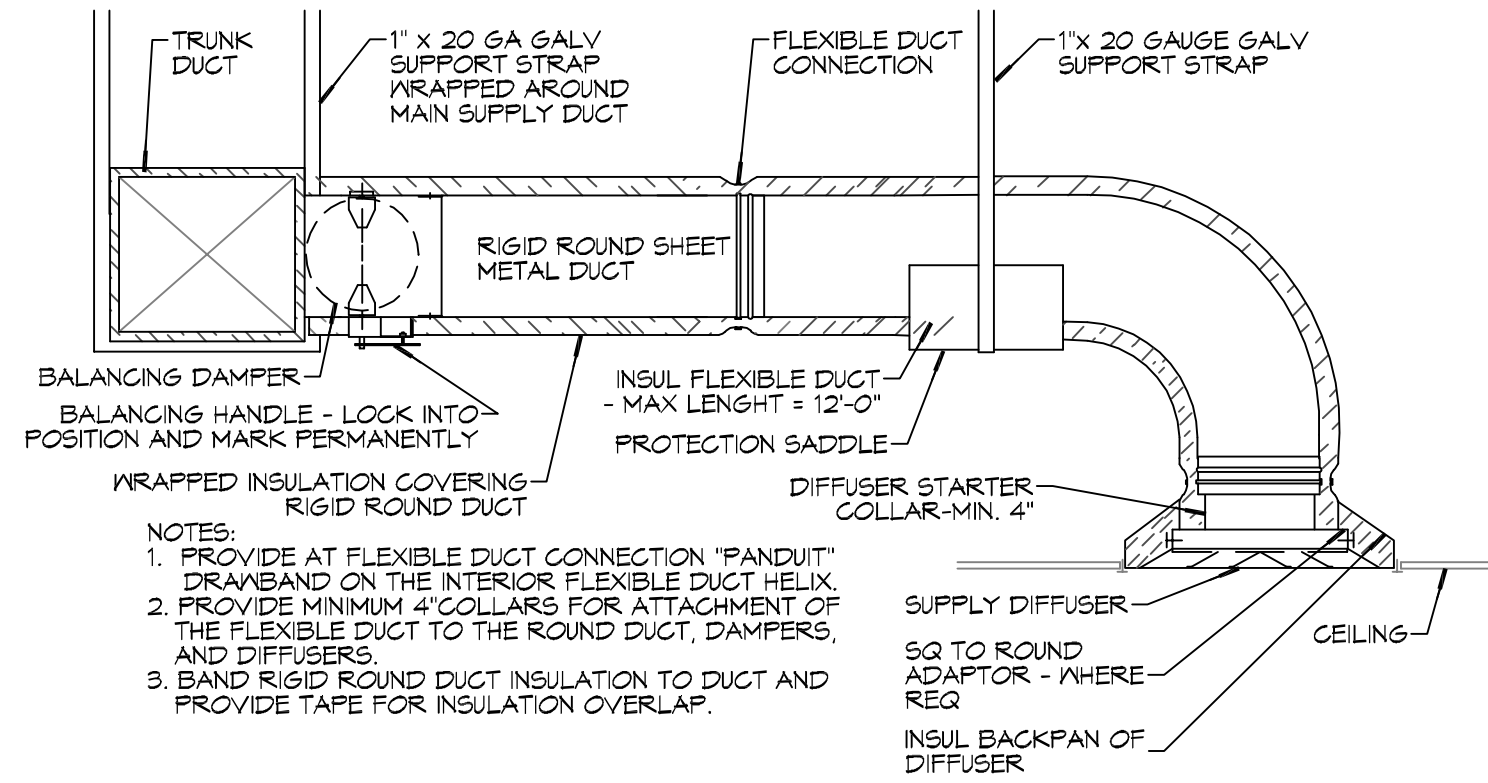
- CONCEALED DUCTWORK TO BE GALVANIZED SHEET METAL LINED WITH FIBROUS GLASS DUCT LINER, MIN R-6. INSTALLED PER SMACNA STANDARDS.
- EXPOSED DUCTWORK TO BE GALVANIZED SHEET METAL LINED WITH FIBROUS GLASS DUCT LINER, MIN R-6. INSTALLED PER SMACNA STANDARDS.
- ROUND FLEXIBLE DUCT TO BE UL-181, CLASS 1, AIR DUCT MATERIALS. DUCT SIZES SHOWN ARE CLEAR INSIDE DIMENSIONS.
- IN ALL SYSTEMS OVER 2000 CFM AND LESS THAN 15,000 CFM, SMOKE DETECTORS SHALL BE INSTALLED IN ACCORDANCE WITH NFPA 72E IN THE RETURN DUCT DOWNSTREAM OF THE AIR HANDLING UNIT AND ALL FILTERS TO AUTOMATICALLY STOP THE FAN.
- PROVIDE UL LISTED 125°F FIRESTAT IN RETURN AIR OF EACH SYSTEM UNDER 2000 CFM TO SHUT DOWN THE FAN IN THE EVENT OF FIRE.
- PROVIDE UL RATED FIRE DAMPERS WHERE REQUIRED AT ALL DUCT PENETRATIONS OF FIRE-RATED ASSEMBLIES AND WHERE REQUIRED BY CODE, INCLUDING OUTSIDE AIR INTAKES AND EXHAUST FANS.
- CONDENSATE DRAINS TO BE PVC PIPE RUN TO PLUMBERS P-TRAP WITHIN FIVE FEET OF AIR HANDLING UNITS.
- ALL AIR HANDLING SYSTEMS TO BE BALANCED TO ASSURE PROPER AIR FLOWS PER PLANS.
- ALL THERMOSTATS TO BE AUTOMATIC CHANGEOVER WITH HEAT SWITCH.
- EXHAUST FAN SHALL BE CONTROLLED BY A SWITCH ON THE WALL IN THE SAME LOCATION AS LIGHT SWITCH(S). PROVIDE BACK DRAFT DAMPER.
- PROVIDE AND INSTALL WATER PROOF GRILLE VENT IN PROPER ROOF LOCATION FOR PLUMBING FIXTURE EXHAUST.
- ALL SUPPLY AIR VENTS SHALL BE EQUIPPED WITH AIR CONTROL DAMPERS AT THE REGISTER.
- LOCATE OUTDOOR UNITS AS SHOWN ON ARCHITECTURAL DRAWINGS.
- REFRIGERANT LINES SHALL BE SIZED BY UNIT MANUFACTURER AND INSTALLED ACCORDING TO MANUFACTURER'S INSTRUCTIONS.
- FRESH AIR SHALL BE SUPPLIED TO EACH AIR HANDLER THROUGH EXTERIOR WALL DUCT SUPPLIED WITH A CONTROL DAMPER.
- ALL ELECTRICAL, MECHANICAL, AND PLUMBING PENETRATING FIRE WALLS SHALL BE FIRE CAULKED. (PENETRATIONS THROUGH RATED CONSTRUCTION SHALL BE SEALED WITH A MATERIAL CAPABLE OF PREVENTING THE PASSAGE OF FLAMES AND HOT GASES WHEN TESTED IN ACCORDANCE WITH ASTM-E814).
- ALL MECHANICAL SYMBOLS ARE DRAWN DIAGRAMMATICALLY. CONTRACTOR TO VERIFY WITH OWNER LOCATIONS OF VENTS, DAMPERS, REGISTERS, ETC.
- FLEXIBLE DUCTWORK LENGTH NOT TO EXCEED 12'-0".
- REFER TO REFLECTED CEILING PLAN FOR FINAL GRILLE AND DIFFUSER LOCATIONS AND COORDINATE AS REQUIRED.
- FINAL LOCATION OF TEMPERATURE CONTROLS TO BE COORDINATED WITH OWNER AT JOB SITE.
- PROVIDE AND INSTALL SMOKE DETECTORS AS APPROVED BY LOCAL A.H.U.'S. PLACE NEAR R/A AND S/A OPENINGS OF A.H.U. AND PROVIDE, WITH ACCESS PANEL, WIRING BY ELECTRICAL CONTRACTOR.
- FRESH AIR INTAKES ARE REQUIRED TO HAVE MOTORIZED OR GRAVITY DAMPERS TO SHUT OFF WHEN SYSTEM IS NOT RUNNING.
- PROVIDE BIRD SCREENS AT ALL EXTERIOR MECHANICAL PENETRATIONS.
- COORDINATE WALL MOUNTED THERMOSTAT LOCATIONS WITH ALL OWNER FURNISHED ITEMS EITHER WALL MOUNTED OR FLOOR MOUNTED AGAINST PARTITIONS. REFER TO ARCHITECTURAL DRAWINGS.
- SEE ROOF PLAN FOR ALL ROOF PENETRATIONS.
- PROVIDE MIN 18 GA GALVANIZED SHEET METAL TO BLANK-OFF GABLE VENTS WHERE INTAKE/EXHAUST DUCTS OCCUR.

| A/C UNIT SCHEDULE | | ELECTRICAL | | COMMENTS |
|----------------------|--------|------------|-----|-----------|
| TOTAL BTU | | VOLTAGE | MCA | CKT BRKRS |
| 90,000 BTU (7.5 TON) | AHU #1 | 240V, 3Ø | - | P1, -,-,- |

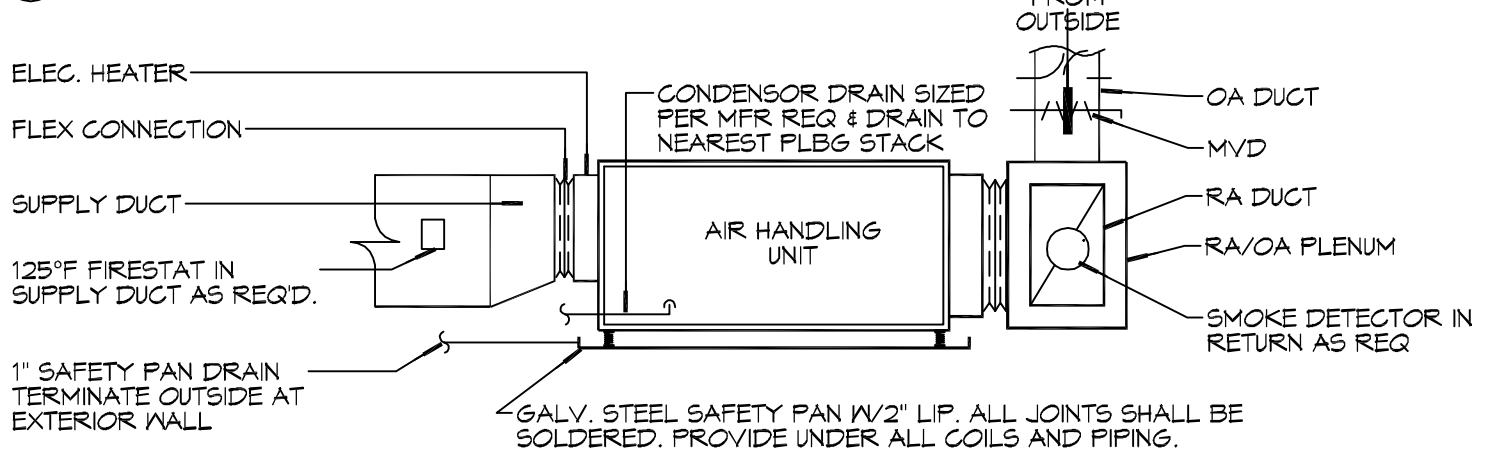
| AHU UNIT SCHEDULE | | ELECTRICAL | | COMMENTS | | | |
|----------------------|-------|------------|-----------|----------|-----|-----------|--|
| TOTAL BTU | CFM | O.A. | HEAT (KW) | VOLTAGE | MCA | CKT BRKRS | COMMENTS |
| 90,000 BTU (7.5 TON) | 3,160 | 500 | 12 | 240V, 3Ø | - | P1, -,-,- | NOTE: ALL A/C TO BE SPLIT-SYSTEM HVAC (TRANE OR EQUAL) ALL AHU TO BE SINGLE POINT CONNECTION |

| DIFFUSER/REGISTER SCHEDULE | | | |
|----------------------------|---------|-----------|--|
| TAG | SERVICE | SIZE | DESCRIPTION |
| A | SUPPLY | REF. PLAN | 12X12 STEEL CONE DIFFUSER, WHITE FINISH WITH VOLUME CONTROL |
| B | SUPPLY | REF. PLAN | LOUVERED STEEL DIFFUSER/ADJUSTABLE DOUBLE DEFLECTION ALUMINUM FINISH WITH VOLUME CONTROL |
| C | RETURN | REF. PLAN | LOUVERED FACE SIDEWALL RETURN, WHITE FINISH, ALUMINUM FRAME |
| D | RETURN | 20X8 | STEEL DOOR GRILLE, WHITE FINISH, SIGHT PROOF CORE |

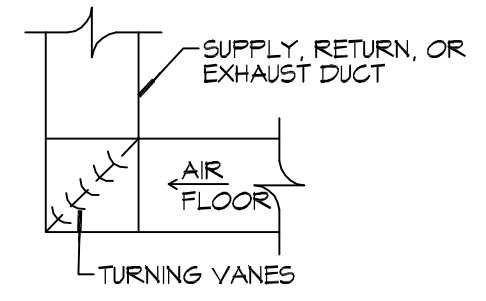
| EXHAUST FAN SCHEDULE | | | | | |
|----------------------|----------|-----|---------|------|----------------|
| EXHAUST | LOCATION | CFM | VOLTAGE | TYPE | MANUFACTURER |
| EF-1 | TOILET | 90 | 120 | VENT | BROAN OR EQUAL |
| EF-2 | JANITOR | 100 | 120 | VENT | BROAN OR EQUAL |



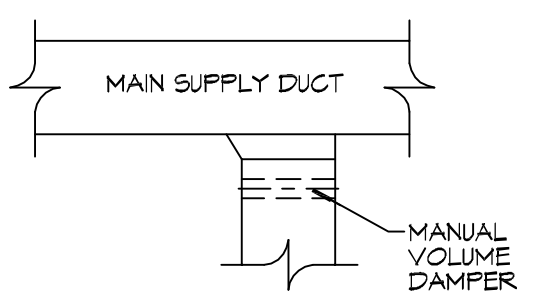
F DIFFUSER CONNECTION DETAIL - FLEX DUCT



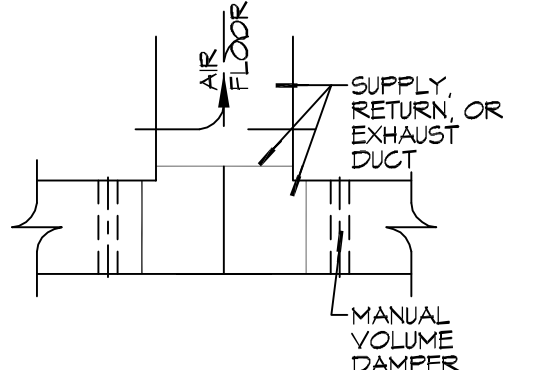
E TYPICAL HORIZONTAL AHU DETAIL



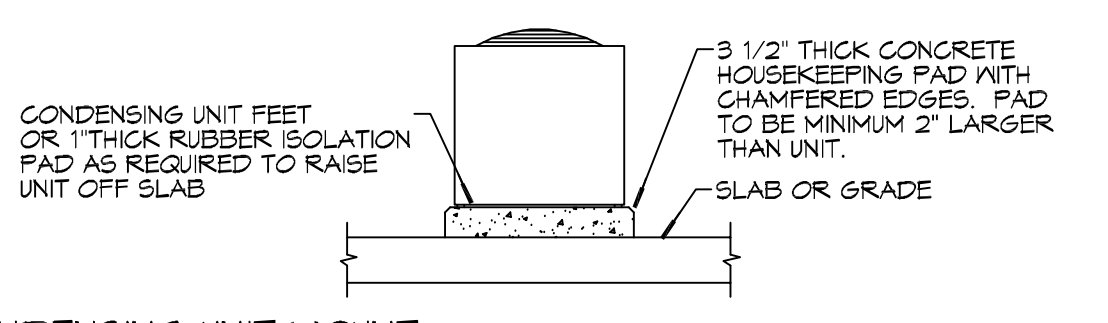
D SQUARE ELBOW DETAIL



C SUPPLY DUCT TAKE-OFF DETAIL

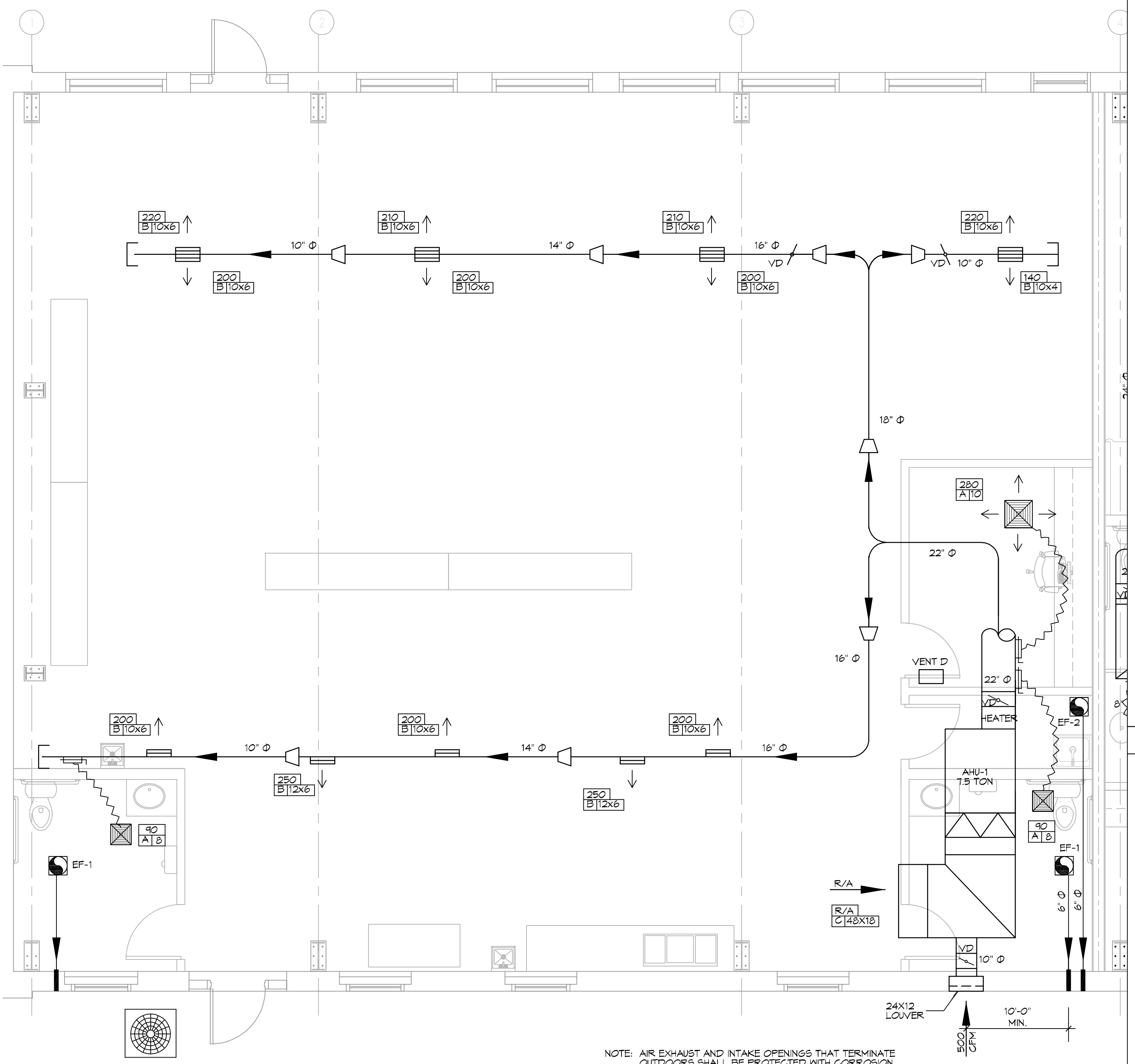


B DUCT SPLITTER DET



A CONDENSING UNIT MOUNT

2 DETAILS
SCALE: NTS



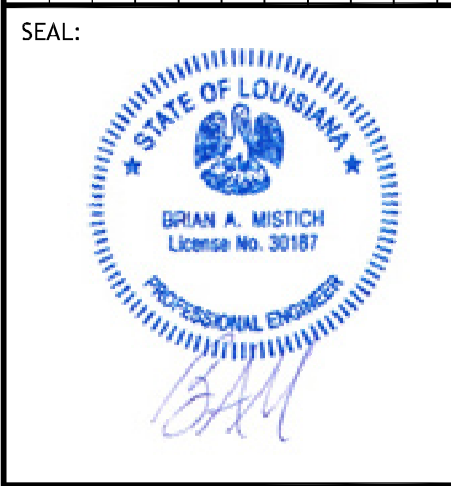
NOTE: AIR EXHAUST AND INTAKE OPENINGS THAT TERMINATE OUTDOORS SHALL BE PROTECTED WITH CORROSION RESISTANT SCREENS, LOUVERS, OR GRILLES PROTECTED AGAINST LOCAL WEATHER CONDITIONS. EXHAUST GRILLES TO BE A MINIMUM OF 10'-0" FROM AIR INTAKES.

MECHANICAL FLOOR PLAN
SCALE: 1/4"=1'-0"

LEGEND

- SUPPLY AIR GRILLE
- RETURN AIR GRILLE
- EXHAUST FAN
- THERMOSTAT
- SUPPLY AIR DUCT
- RETURN AIR DUCT
- DAMPER CONTROL
- ROUND FLEX DUCT, MAX LENGTH 12'-0", MIN R-6. PROVIDE MAN. DAMPER AT DIFFUSER CONNECTIONS, DUCT SIZE AS FOLLOWS:
250 CFM TO 350 CFM = 9"
200 CFM TO 250 CFM = 8"
150 CFM TO 200 CFM = 7"
100 CFM TO 150 CFM = 6"

| # | DESCRIPTION | DATE |
|---|-------------|------|
| | | |
| | | |
| | | |
| | | |



NEW PREP FACILITY
OLD TOWN
KITCHEN
227 COUSIN STREET
SLIDELL, LA 70459
JOB No: 2224
DATE: 11-21-17
DRAWN BY: CKD
CHECKED BY: CKD

SHEET TITLE:
MECHANICAL FLOOR PLAN, SCHEDULES AND DETAILS

DRAWING NUMBER:
M101

SHEET No: 7 of 9

