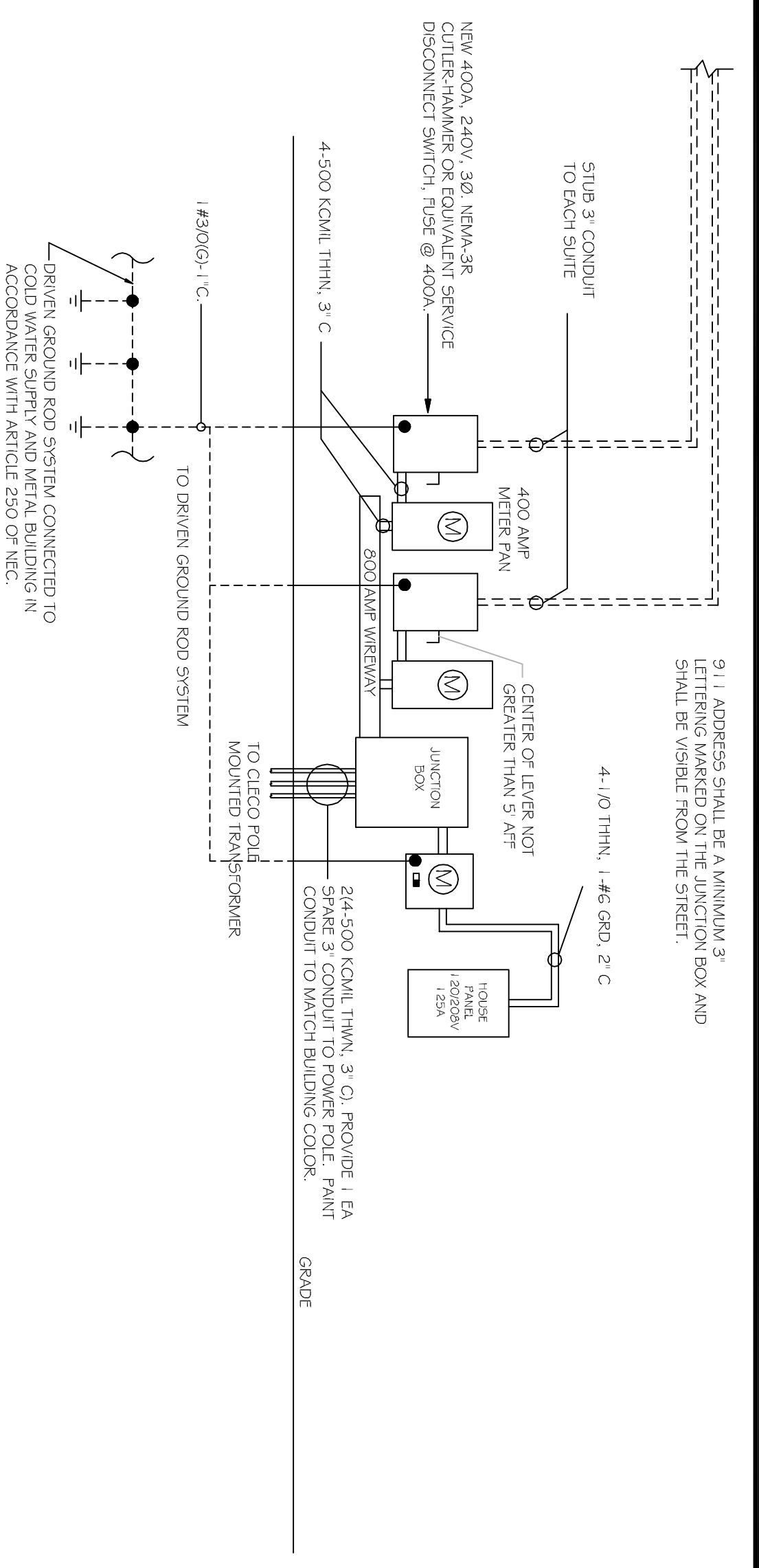
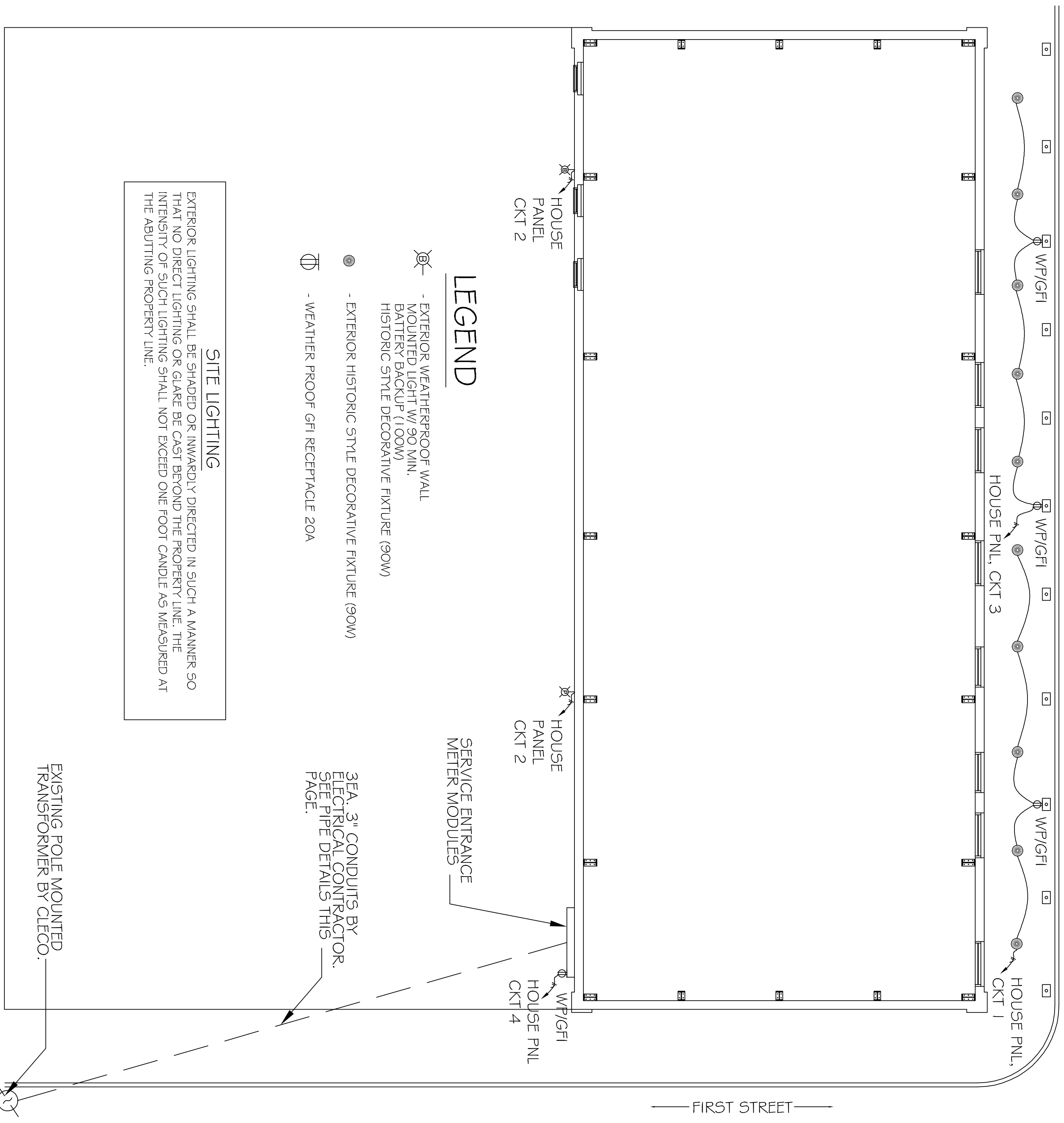


## ZONE-LINE DIAGRAM

SCALE: NTS



9.1 | ADDRESS SHALL BE A MINIMUM 3" LETTERING MARKED ON THE JUNCTION BOX AND SHALL BE VISIBLE FROM THE STREET.



### LEGEND

- EXTERIOR WEATHERPROOF WALL MOUNTED LIGHT W/ 90 MIN. BATTERY BACKUP (100W) HISTORIC STYLE DECORATIVE FIXTURE (90W)
- EXTERIOR HISTORIC STYLE DECORATIVE FIXTURE (90W)
- WEATHER PROOF GF RECEPTACLE 20A

### SITE LIGHTING

EXTERIOR LIGHTING SHALL BE SHADED OR INWARDLY DIRECTED IN SUCH A MANNER SO THAT NO DIRECT LIGHTING OR GLARE BE CAST BEYOND THE PROPERTY LINE. THE INTENSITY OF SUCH LIGHTING SHALL NOT EXCEED ONE FOOT CANDLE AS MEASURED AT THE ADJUTING PROPERTY LINE.

## ELECTRICAL SERVICE LAYOUT

SCALE: NTS

# DAMMON

## ENGINEERING, INC.

LOUISIANA & MISSISSIPPI

Chief Engineer: Brian Mistich, PE  
 554 Old Spanish Trail  
 Slidell, LA 70458  
 www.dammonengineering.com  
 info@dammonengineering.com  
 PH: 985.649.5832

REVISIONS		DATE
#	DESCRIPTION	
1		

**NEW RESTAURANT**

227 COUSIN STREET  
 SLIDELL, LA. 70458

JOB No: 2331 DATE: 10-27-17  
 DRAWN BY: CKD CHECKED BY: CKD

This drawing and schedule, design and engineering represent the work of Dammon Engineering, Inc. and shall remain the property of Dammon Engineering, Inc. No part thereof shall be copied, reproduced, or transmitted in any form or by any means, electronic, mechanical, photocopying, recording, or by any information storage and retrieval system, without the prior written consent of Dammon Engineering, Inc. Any use of this drawing or schedule for any project other than the specific project for which it was prepared is prohibited. Any use of this drawing or schedule for any project other than the specific project for which it was prepared is prohibited. Any use of this drawing or schedule for any project other than the specific project for which it was prepared is prohibited.

SHEET TITLE:  
**PANEL SCHEDULES**

DRAWING NUMBER:  
E102

15 OF 15