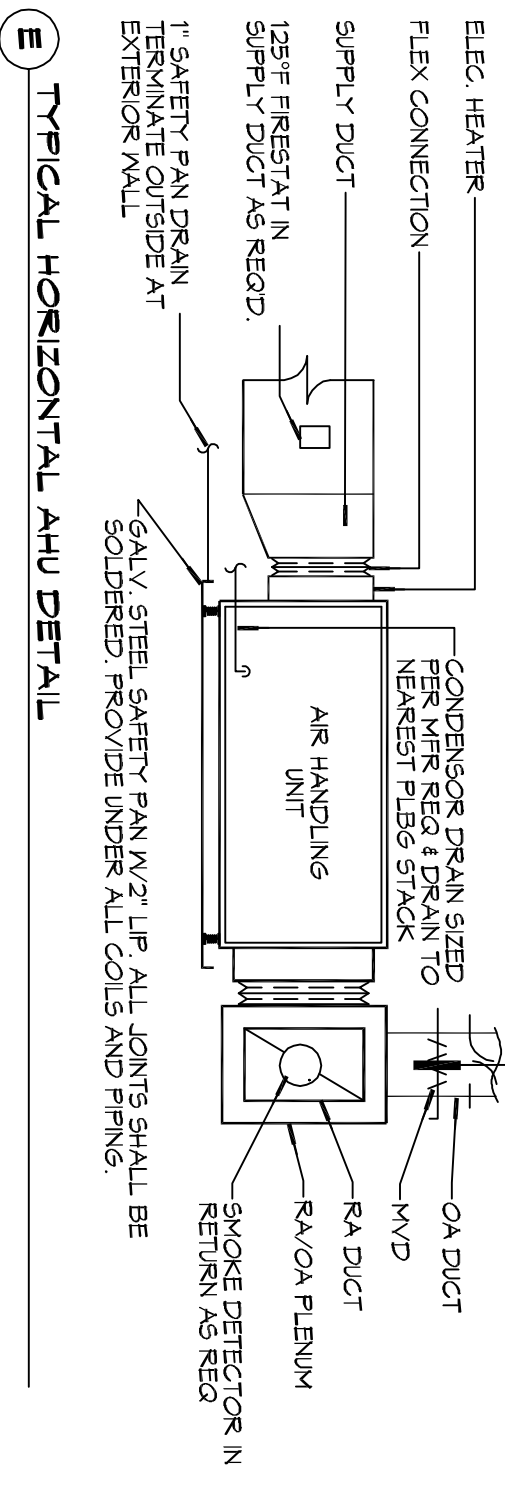
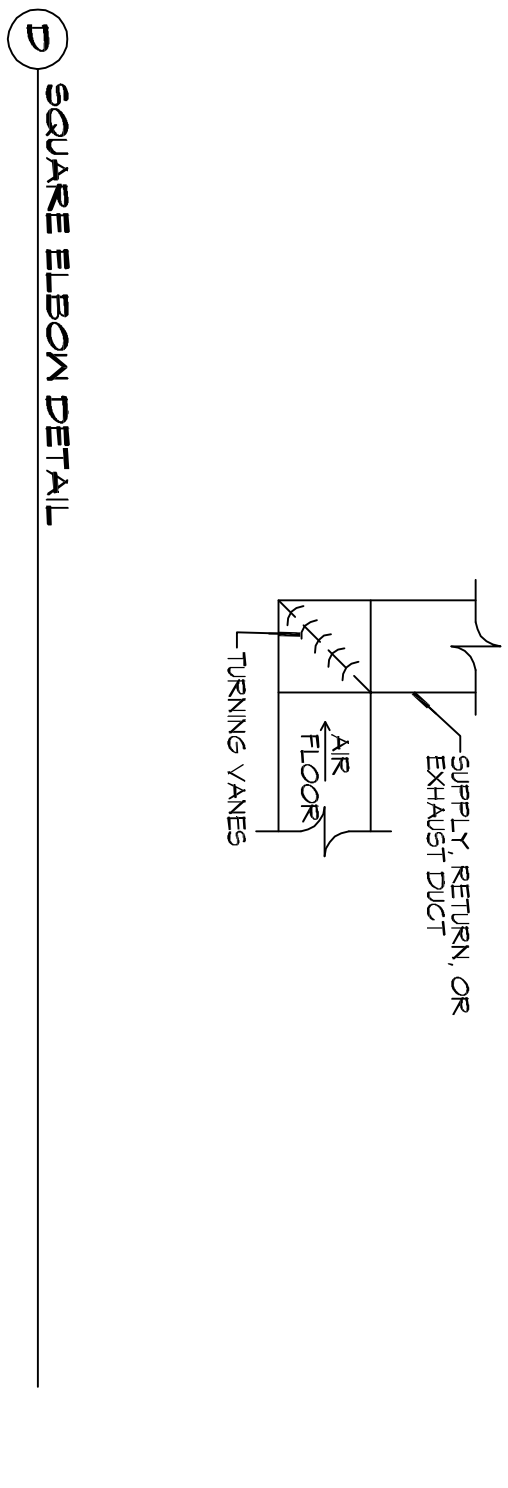


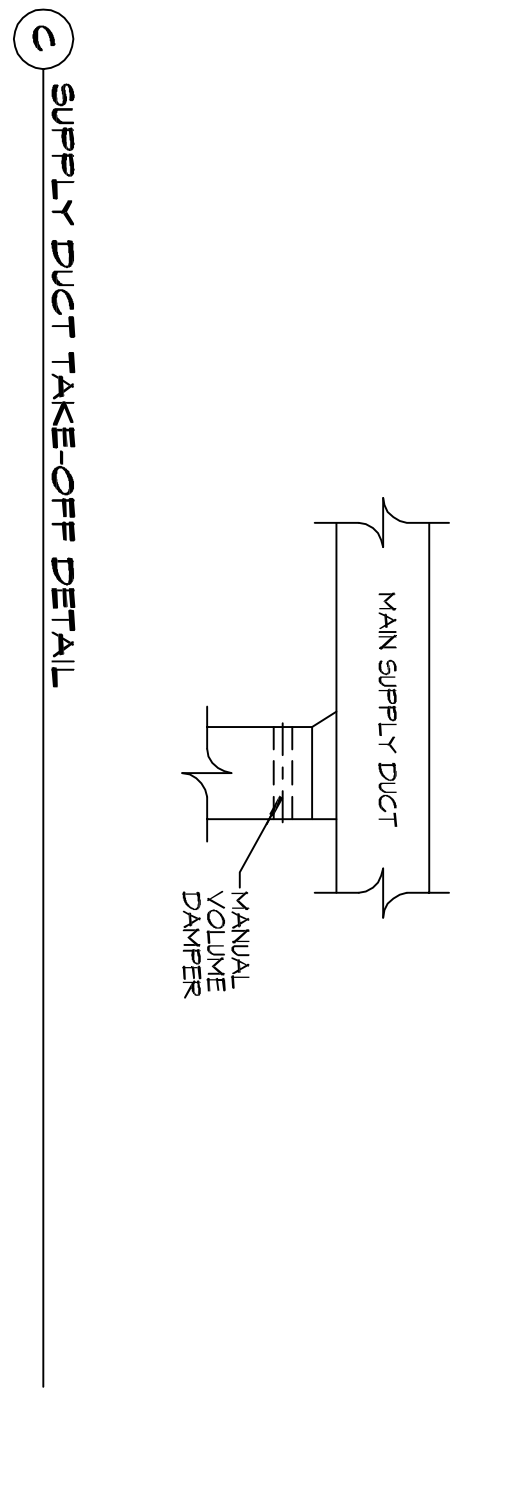
F DIFFUSER CONNECTION DETAIL - FLEX DUCT



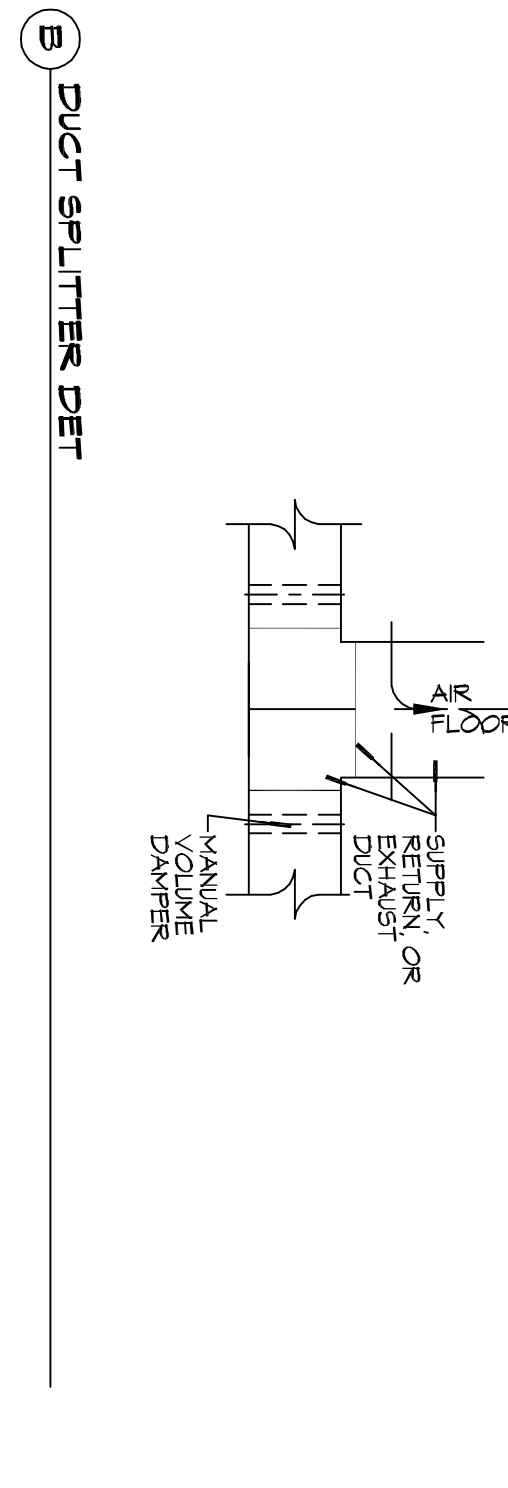
E TYPICAL HORIZONTAL AHU DETAIL



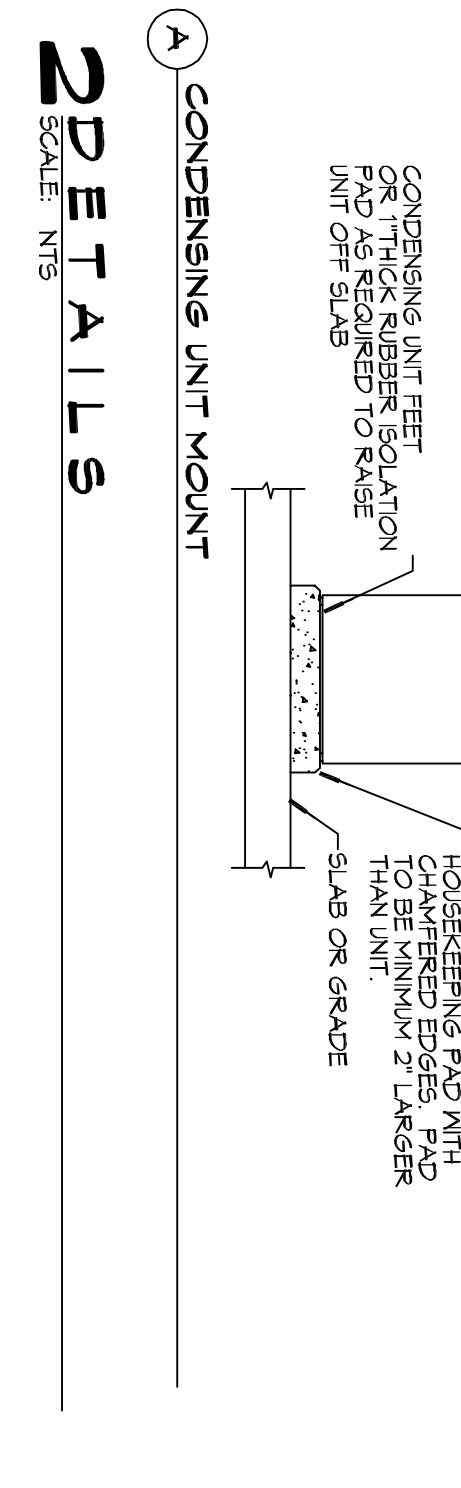
D SQUARE ELBOW DETAIL



C SUPPLY DUCT TAKE-OFF DETAIL

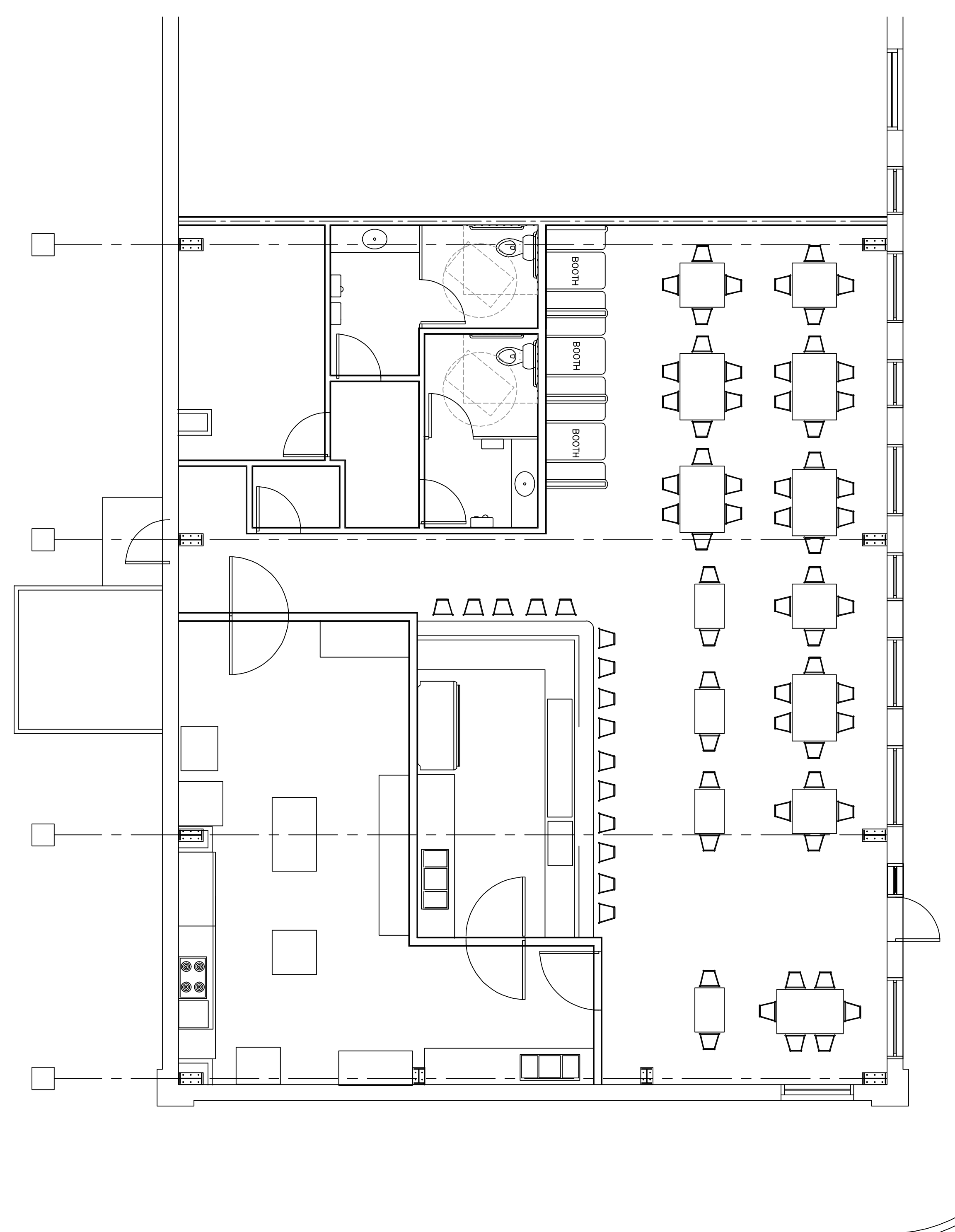


B DUCT SPLITTER DET.



A CONDENSING UNIT MOUNT

EXHAUST FAN SCHEDULE					
EXHAUST	LOCATION	CFM	VOLTAGE	TYPE	MANUFACTURER
EF-1	TOILET	100	120	VENT	BROAN OR EQUAL
EF-2	TOILET	100	120	VENT	BROAN OR EQUAL
EF-3	TOILET	100	120	VENT	BROAN OR EQUAL

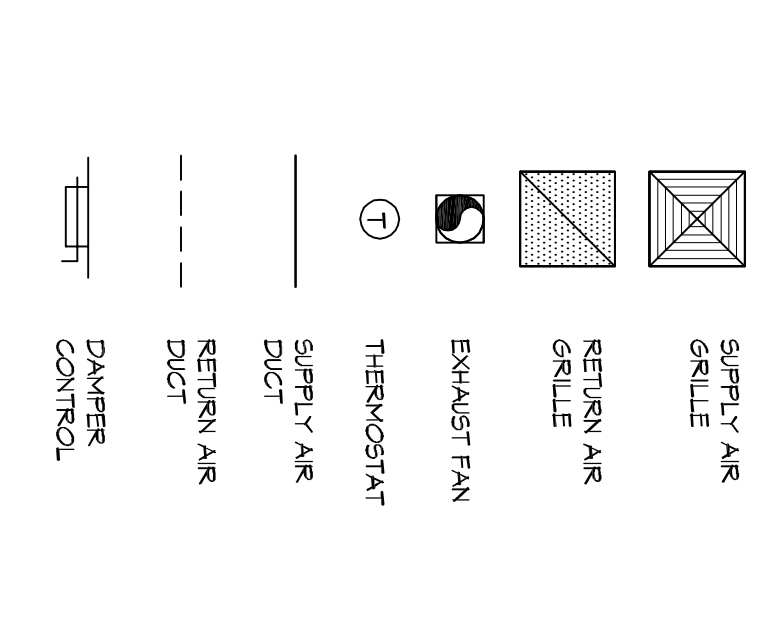


MECHANICAL FLOOR PLAN
SCALE: 3/8"=1'-0"

GENERAL HVAC NOTES

- CONCEALED DUCTWORK TO BE GALVANIZED SHEET METAL LINED WITH 5/16\"/>
- EXPOSED DUCTWORK TO BE GALVANIZED SHEET METAL LINED WITH FIBROGLASS DUCT LINER, MIN. R-6, INSTALLED PER SHAWN STANDARDS.
- ROUND FLEXIBLE DUCT TO BE UL-181, CLASS 1, AIR DUCT MATERIALS.
- DUCT SIZES SHOWN ARE CLEAR INSIDE DIMENSIONS.
- ALL SYSTEMS OVER 250 CFM AND LESS THAN 15,000 CFM SMOKE DETECTORS SHALL BE INSTALLED IN ACCORDANCE WITH NFPA 12 IN THE RETURN DUCT DOWNSTREAM OF THE AIR HANDLING UNIT AND ALL FILTERS TO AUTOMATICALLY STOP THE FAN.
- PROVIDE UL LISTED 125 F° FRESH AIR RETURN AIR OF EACH SYSTEM UNDER 2000 CFM TO SHUT DOWN THE FAN IN THE EVENT OF FIRE.
- PROVIDE UL RATED FIRE DAMPERS WHERE REQUIRED AT ALL DUCT PENETRATIONS OF FIRE RATED ASSEMBLIES AND WHERE REQUIRED BY CODE, INCLUDING OUTSIDE AIR INTAKES AND EXHAUST FANS.
- CONDENSATE DRAINS TO BE PVC PIPE RUN TO FLUVEBERG F-T-RAP WITHIN FIVE FEET OF AIR HANDLING UNITS.
- ALL AIR HANDLING SYSTEMS TO BE BALANCED TO ACHIEVE PROPER AIR FLOWS PER PLANS.
- ALL THERMOSTATS TO BE AUTOMATIC CHANGEDOVER WITH HEAT SWITCH.
- EXHAUST FAN SHALL BE CONTROLLED BY A SWITCH ON THE WALL IN THE SAME LOCATION AS LIGHT SWITCH(S). PROVIDE BACK DRAFT DAMPER.
- PROVIDE AND INSTALL WATER PROOF GYLLE VENT IN PROPER ROOF LOCATION FOR PLUMBING FIXTURE EXHAUST.
- ALL SUPPLY AIR VENTS SHALL BE EQUIPPED WITH AIR CONTROL DAMPERS AT THE REGISTER.
- LOCATE OUTDOOR UNITS AS SHOWN ON ARCHITECTURAL DRAWINGS.
- REFRIGERANT LINES SHALL BE SIZED BY UNIT MANUFACTURER AND INSTALLED ACCORDING TO MANUFACTURER'S INSTRUCTIONS.
- FRESH AIR SHALL BE SUPPLIED TO EACH AIR HANDLER THROUGH EXHAUST FAN.
- FRESH AIR SHALL BE SUPPLIED TO A CONTROL DAMPER.
- ALL ELECTRICAL, MECHANICAL, AND PLUMBING PENETRATING FIRE WALLS SHALL BE FIRE CALLED. (PENETRATIONS THROUGH RATED CONSTRUCTION SHALL BE SEALED WITH A MATERIAL CAPABLE OF WITHSTANDING FIRE FOR THE LIFE OF THE BUILDING.)
- ALL MECHANICAL SYSTEMS ARE DRAIN DRAINAGE MANUFACTURER'S ACCORDANCE WITH ASHRAE-154.
- CONTRACTOR TO VERIFY WITH OWNER LOCATIONS OF VENTS, DAMPERS, REGISTERES, ETC.
- FLEXIBLE DUCTWORK LENGTH NOT TO EXCEED 15'-0\"/>
- REFER TO REFLECTED CEILING PLAN FOR FINAL GRILLE AND DIFFUSER LOCATIONS AND CONDENSATE AS REQUIRED.
- FINAL LOCATION OF TEMPERATURE CONTROLS TO BE COORDINATED WITH OWNER AT JOB SITE.
- PROVIDE AND INSTALL SMOKE DETECTORS AS APPROVED BY LOCAL A.H.U.S. PLACE NEAR R/A AND S/A OPENINGS OF AHU AND PROVIDE WITH ACCESS PANEL, WIRING BY ELECTRICAL CONTRACTOR.
- FRESH AIR INTAKES ARE REQUIRED TO HAVE NOTICED OR GRAVITY DAMPERS TO SHUT OFF WHEN SYSTEM IS NOT RUNNING.
- PROVIDE BIRD SCREENING AT ALL EXTERIOR MECHANICAL PENETRATIONS.
- COORDINATE WALL MOUNTED THERMOSTAT LOCATIONS WITH ALL OWNER FINISHED ITEMS EITHER WALL MOUNTED OR FLOOR MOUNTED AGAINST PARTITION. REFER TO ARCHITECTURAL DRAWINGS.
- SEE ROOF PLAN FOR ALL ROOF PENETRATIONS.
- PROVIDE MIN 18 GA GALVANIZED SHEET METAL TO BLANK-OFF 6\"/>
- VENTS WHERE INTAKE/EXHAUST DUCTS OCCUR.

LEGEND



DAMMON ENGINEERING, INC.
LOUISIANA & MISSISSIPPI

Chief Engineer: Brian Mistich, PE
554 Old Spanish Trail
Slidell, LA 70458

www.dammonengineering.com
info@dammonengineering.com
PH: 985.649.5832

REVISIONS		
#	DESCRIPTION	DATE

NEW RESTAURANT

221 COUSIN STREET
SLIDELL, LA. 70458

JOB No: 2331 DATE: 10-21-17
DRAWN BY: KCD CHECKED BY: KCD

SHEET TITLE:
MECHANICAL FLOOR PLAN, SCHEDULES AND DETAILS

DRAWING NUMBER:
M101

SHEET No. 13 of 15