

REQUIRED:

- Parking Stall Size = 9 ft x 20 ft
- Minimum 2-way driveline = 24 ft
- Minimum 1-way driveline = 20 ft
- Minimum Landscape Buffer at ROW = 10 ft deep
- Dead-End Parking requires 10 ft backup area
- Landscaped Parking Island (min. 200 sq ft)

Required Parking:

2992 Pontchartrain Dr =
1,600 / 150 sf = 11 spaces

2998 Pontchartrain Dr =

Restaurant 2,627 sf = 18 spaces

Office 591 sf = 2 spaces

(Sq Ft Confirmed from Sheets A1.2 and A1.6)

Proposed Parking:

2992 = 16

2998 = 13

Total Required Parking

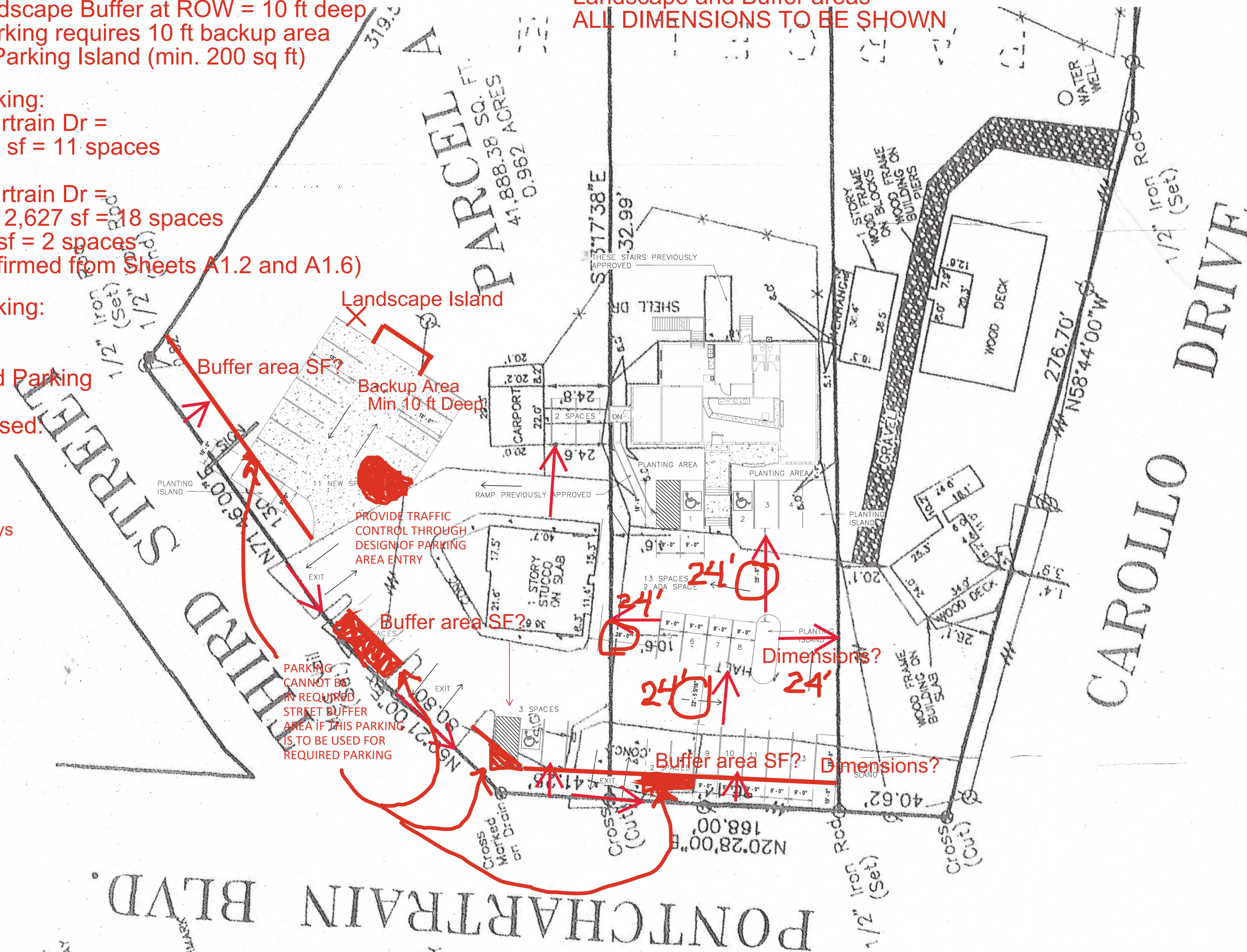
31 spaces

Spaces Proposed:

29 spaces

Width of Driveways

Please provide Site Plan with scale showing 2 Properties
Existing Improvements
Existing Driveways and Drivelanes
Proposed Parking
Landscape and Buffer areas
ALL DIMENSIONS TO BE SHOWN



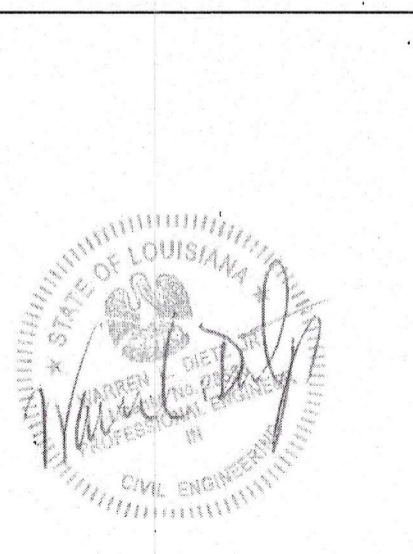
A1 PLOT PLAN
1" = 20'-0"

REVIEWED FOR
STATE FIRE MARSHAL
AS PER REVIEW LETTER
BY: BRAD EVERETT

BlEv

WARREN L. DIETZ JR. P.E.
CIVIL ENGINEER
Covington, LA
985-809-8033

2998 PONCHARTRAIN DR.
CAMELLIA POINT
CITY OF SLIDELL



Drawn by JJB	Checked by MKB
Project number DD-226C	Date 4/10/2024

SHEET
A1.1