

**GENERAL ELECTRICAL NOTES:**

1. PROVIDE UNSWITCHED CONDUCTOR FOR EMERGENCY FIXTURES AND EXIT SIGNS.
2. INSTALL ALL EMERGENCY EXIT LIGHTS AND EXIT SIGNS AT 9'-0" OR JUST BELOW CEILING IN CASES WHERE CEILING IS LOWER THAN 9'-0".
3. INTERCONNECT RESTROOM FAN WITH RESTROOM LIGHT AND SWITCH.
4. PROVIDE MINIMUM OF (2) #12 (1) #12 GND FOR ALL CIRCUITS.
5. ADDITIONAL FIRE ALARM NOTIFICATION APPLIANCES WILL BE PROVIDED UNDER INDIVIDUAL TENANT FINISH CONTRACTS AS NECESSARY.

**ELECTRICAL PLAN NOTES:**

- 1 HOMERUN CIRCUIT(S) THRU CONTACTOR CONTROLLED BY PHOTOCELL AND/OR TIME SWITCH. REFER TO CONTACTOR SCHEDULE ON SHEET E5 FOR CONTROL SEQUENCE.
- 2 TIMESWITCH AND CONTACTORS FOR OVERRIDE CONTROL OF LIGHTS. REFER TO CONTACTOR SCHEDULE ON SHEET E7 AND SPECIFICATIONS FOR ADDITIONAL INFORMATION.

FLS #1	FLS #2	DATE	DESCRIPTION	BY
18/29/07	REVISION #1			
12/04/08	REVISION #2			

**DDG DUPLANTIS**  
**DESIGN GROUP, PC**  
*Respect. Integrity. Client Satisfaction. Excellence*  
 THIBODAUX, LOUISIANA  
 MANDEVILLE, LOUISIANA  
 Civil Engineering • Site Development • Land Planning • Public Works • Architecture  
 314 East Bayou Road  
 Thibodaux, Louisiana 70301  
 Phone: 985-447-0090  
 Fax: 985-447-7069

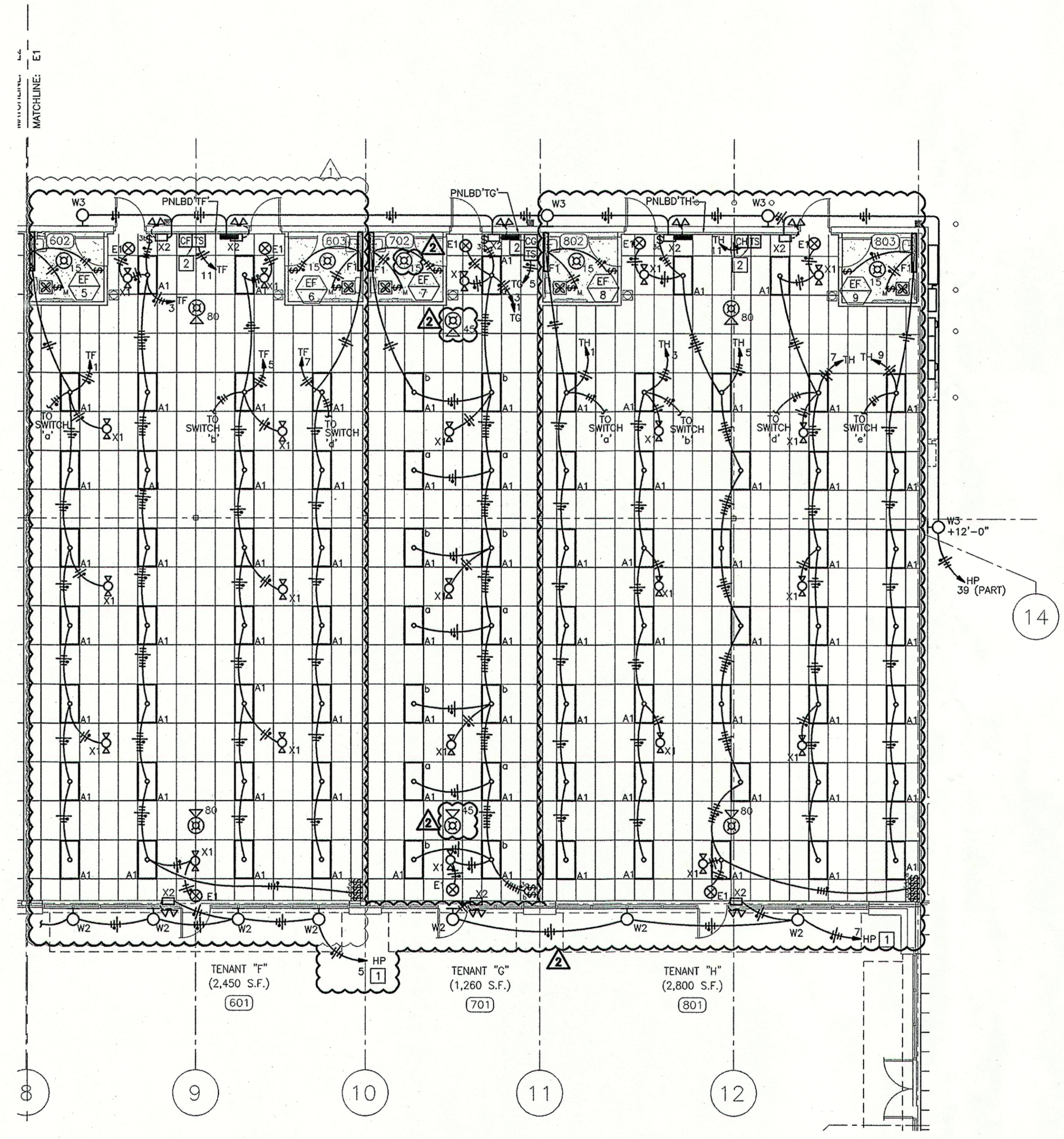
SIGNATURE: \_\_\_\_\_ DATE: \_\_\_\_\_

STAMP

PROPOSED RETAIL DEVELOPMENT  
 CITY OF BOULTE  
 ST. CHARLES PARISH, LOUISIANA  
 FOR THE SPECTRA GROUP, INC.  
 MEMPHIS, TENNESSEE

DRAWN	FLS
CHECKED	FLS
DATE	8/13/07
SCALE	AS NOTED ON DWG
PROJECT NO.	0750001106
FILE	0750001106E2.DWG
SHEET	E2

**HENDERSON**  
**ENGINEERS**  
 8325 LENEXA DRIVE  
 LENEXA, KS 66214  
 TEL 913 742 3500 FAX 913 742 5001  
 www.h-ei-eng.com  
 0750001106



**1 LIGHTING FLOOR PLAN**  
 SCALE: 1/8"=1'-0"

Program: D:\pdm\105\075001106\_Spectra Retail Center - Boulte - 110001\Drawings\075001106E2.dwg, Plot: 8/20/08 2:03:29 PM, henderse\hpe\msh, 11