

DAMMON ENGINEERING, INC.

EMMETT DAMMON

ARCHITECT ROBERT WILTSE

1095 FLORIDA AVENUE SLIDELL, LA. 70458 985-649-5832

WEBSITE: WWW.DAMMONENGINEERING.COM

EMAIL: DAMMONENG@BELLSOUTH.NET

ARCHITECTURE

ENGINEERING

STUDIES

PLANNING

INVESTIGATION

EXPERT WITNESS

MARCO'S PIZZA TENANT BUILDOUT

4638 Hwy. 22 Mandeville Louisiana 70471-2820

ELECTRICAL PANELS

SCALE: AS NOTED

JOB#: 2107

DATE: 5-25-11

SHEET 9

E-2

OF 11 399333

GENERAL NOTES:

- GENERAL REQUIREMENTS
A. ELECTRICAL CONTRACTOR SHALL COORDINATE FULLY WITH OTHER CONTRACTORS ASSOCIATED WITH THIS PROJECT TO VERIFY ALL EQUIPMENT LOCATIONS, CONNECTION REQUIREMENTS, ELEVATIONS AND LOCATIONS OF PIPES, CONDUITS AND DUCTS TO PREVENT CONFLICTS DURING CONSTRUCTION.

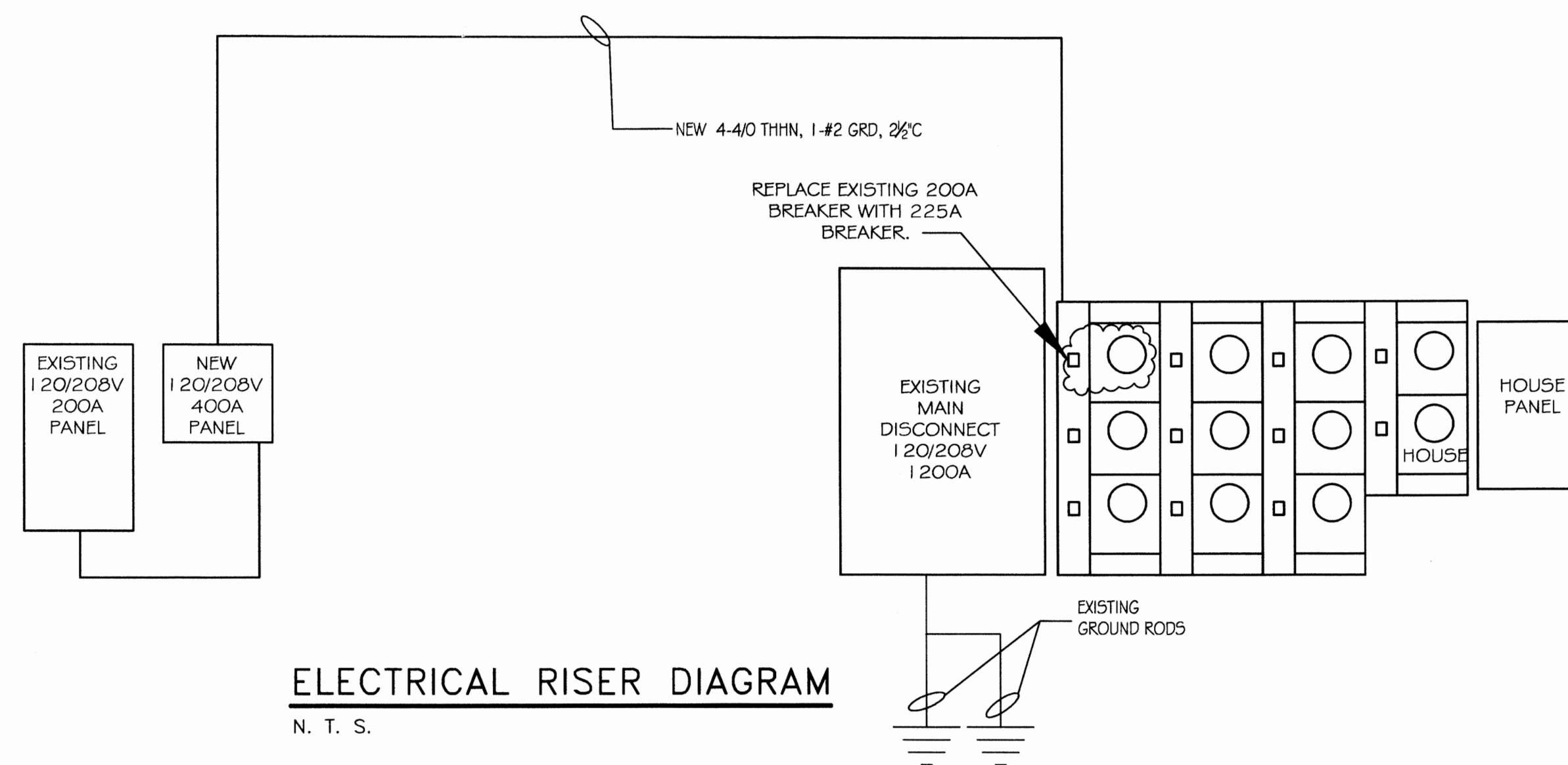
- RACEWAY SYSTEMS
A. ALL BRANCH CIRCUIT WIRING SHALL BE ROUTED IN EMT, ELECTRICAL METALLIC TUBING. USE STEEL SET SCREW TYPE FITTINGS ON ALL EMT.

- WIRING, WIRING DEVICES, PLATES AND GROUNDING
A. ALL WIRING SHALL CONSIST OF COPPER CONDUCTORS WITH THERMOPLASTIC INSULATION RATED FOR SIX HUNDRED (600) VOLTS.

- LIGHTING FIXTURES
A. PROVIDE LIGHTING FIXTURES, OF SIZES, TYPES AND RATINGS INDICATED; COMPLETE WITH, BUT NOT LIMITED TO, HOUSINGS, ENERGY-EFFICIENT LAMPS, LAMP HOLDERS, REFLECTORS, ENERGY EFFICIENT BALLASTS, STARTERS AND WIRING.

- FIRE RATED WALL PENETRATIONS
A. PROVIDE U.L. LISTED FIRESTOP SYSTEM SEALANTS AROUND ALL CONDUITS PASSING THROUGH ALL RATED WALLS OR FLOORS IN ACCORDANCE WITH THE U.L. FIRE RESISTANCE DIRECTORY.

- APPROVED PRODUCTS:
(1) HILTI CSS240
(2) TERMO CFYRESHIELD
(3) 3M CP-25



ELECTRICAL RISER DIAGRAM

N. T. S.

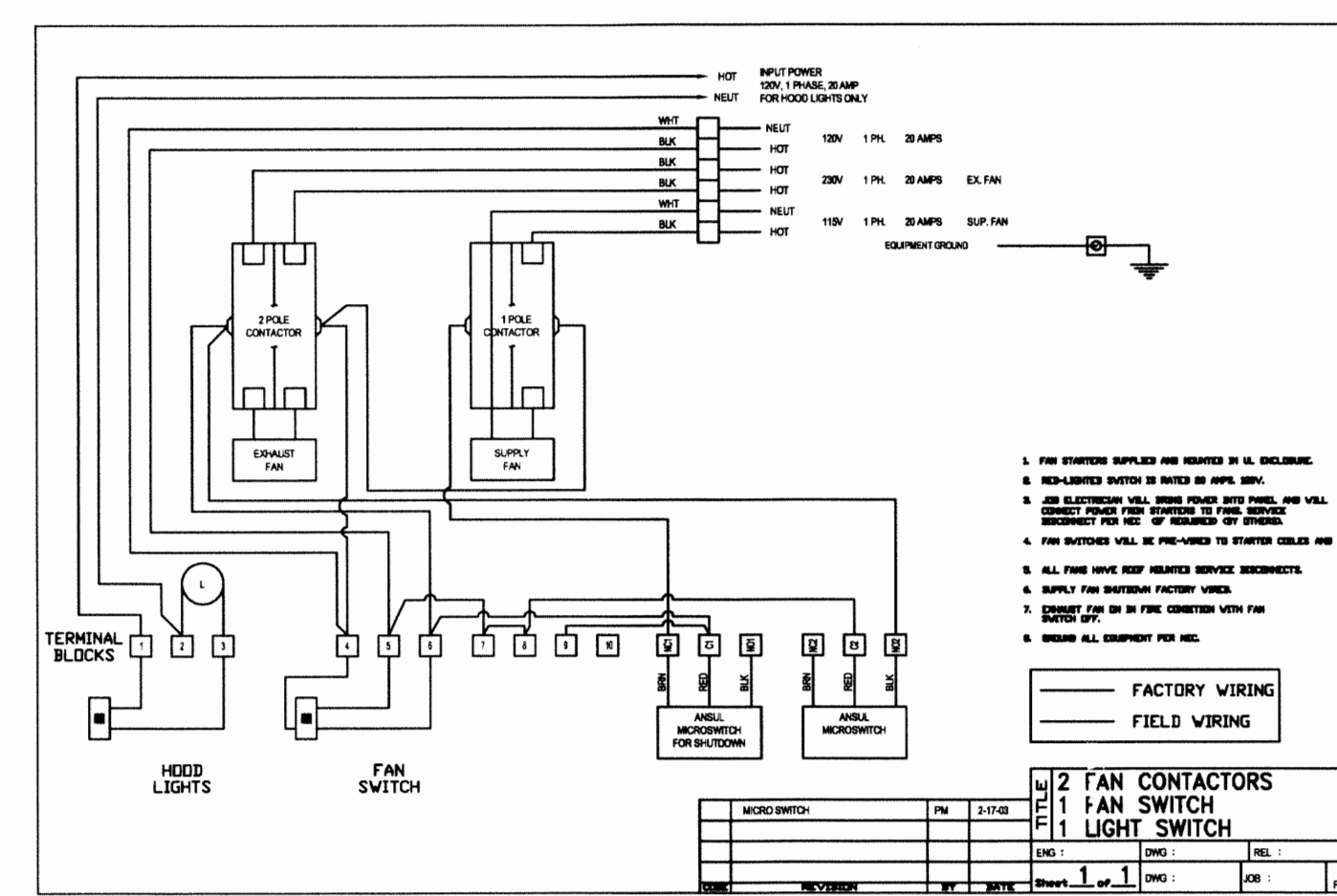
ELECTRICAL LOAD SUMMARY - 320A SERVICE

Table with columns: LOAD SOURCE, 1Ø-kVA, 3Ø-kVA. Rows include Building Lighting, Electric Water Heating, Air Conditioning, Electric Heating, Kitchen Equipment, Refrigeration, Receptacles (Standard), Receptacles (Computer), Other (Specify), and TOTAL.

Table for PANEL: MDP, LOCATION: NEAR RESTROOM MAIN PANEL. Columns: Ckt. No., Thhn Wire Size, Load Description, Breaker, Load, Amp, Pole, Location, Thhn Wire Size, Ckt. No. Includes items like NEW 7.5 TON A/C #2, NEW 7.5 TON AHU #2, HOT WATER HEATER, SUPPLY FAN #1.

Table for PANEL: A (EXISTING), LOCATION: SUITE 'P' NEAR RESTROOM SUB PANEL. Columns: Ckt. No., Thhn Wire Size, Load Description, Breaker, Load, Amp, Pole, Location, Thhn Wire Size, Ckt. No. Includes items like CONVEYOR OVEN #1, MONITORS & PRINTER, TELEPHONE BOARD, DOUGH ROLLER #6, RE-PROOFER #4, BOTTLE COOLER #2B, MAKE TBL #1A, FREEZER #20, WINDOW SIGNS, OUTLETS, SIGN TIMER, LIGHTS, SPARE, BLANK.

LIGHT FIXTURE SCHEDULE table with columns: MARK, DESCRIPTION, LAMP, MODEL NO., MANUF. Includes items like 2X4 LAY-IN FLUORESCENT, CEILING RECESSED COMPACT W/ EYEBALL TRIM, CEILING RECESSED COMPACT FLUORESCENT DOWNLIGHT, CEILING RECESSED COMPACT FLUORESCENT WALL WASHER, EMERGENCY DUAL LAMP W/BATTERY BACK-UP, EMERGENCY DUAL LAMP EXIT LIGHT W/BATTERY BACK-UP, LTB-DBL SURFACE TRACK LIGHT, WALL PACK 70 WATT PULSE START.



HOOD CONTROL SCHEMATIC

PIZZA OVEN HOOD SCALE: NONE

NOTE: ELECTRICAL SERVICE AND SYSTEM DETAILED IS DESIGNED BASED ON 120 / 208 VOLT THREE PHASE SERVICE. ELECTRICAL CONTRACTOR TO VERIFY AVAILABLE SERVICE. MAKE NECESSARY MODIFICATIONS AS REQUIRED.

ELECTRICAL DESIGN BASED UPON 2008 NATIONAL ELECTRICAL CODE.

REVIEWED BY STATE FIRE MARSHAL AS PER REVIEW LETTER BY PATRICKA FLOREY ARCHITECT