

DAMMON ENGINEERING, INC.
EMMETT DAMMON

ARCHITECT
ROBERT WILTSE

1095 FLORIDA AVENUE
SLIDELL, LA. 70458
985-649-5832

WEBSITE:
WWW.DAMMONENGINEERING.COM

EMAIL:
DAMMONENG@BELLSOUTH.NET

ARCHITECTURE
ENGINEERING
STUDIES
PLANNING
INVESTIGATION
EXPERT WITNESS

MARCO'S PIZZA
TENANT
BUILDOUT

4638 Hwy. 22
Mandeville
Louisiana
70471-2820

MECHANICAL
PLAN

SCALE: AS NOTED

JOB#: 2107

DATE: 5-25-11

SHEET 5

M-1

OF 11

CONDENSING UNIT SCHEDULE					
NO.	TOTAL BTU	ELECTRICAL			COMMENTS
		VOLTAGE	MCA	CKT BRKR	
1	72,000 6 TON	208V, 3Ø	25.8	MDP #2,4,6	*
2	120,000 10 TON	208V, 3Ø	58.8	MDP #1,3,5	

* EXISTING UNIT, PROVIDE NORMAL STARTUP SERVICING.
UNITS ARE NEW AND UNTESTED.

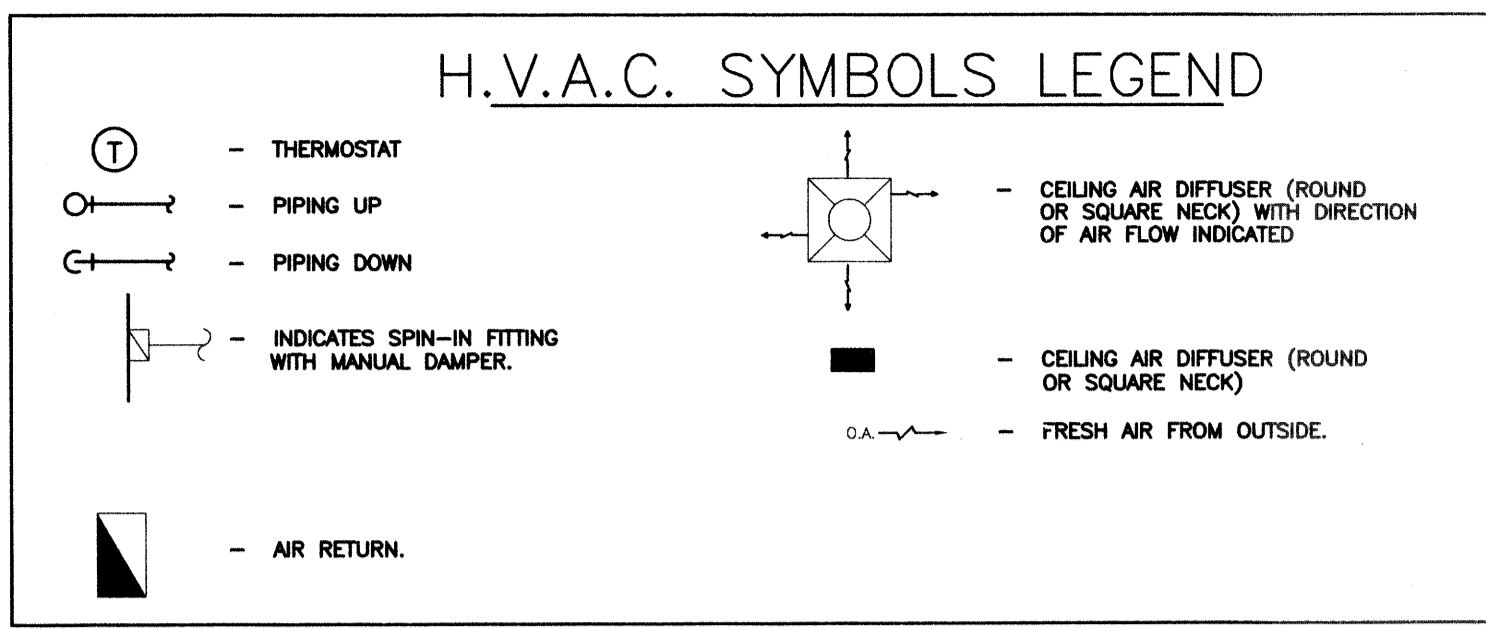
A.H.U. SCHEDULE							
NO.	TOTAL BTU	CFM	O.A.	HEAT	ELECTRICAL		COMMENTS
					VOLTAGE	MCA	
1	6 TON	2,400	400	17KW	208V, 3Ø	59.0	PNL P #2,4,6
2	10 TON	4,000	600	16KW	208V, 3Ø	51.1	PNL Q #2,4,6

* EXISTING UNIT, PROVIDE NORMAL STARTUP SERVICING.
UNITS ARE NEW AND UNTESTED.

AIR BALANCE SCHEDULE					
ITEM	O.A.	R.A.	S.A	E.A.	PRESSURE
AHU-1	400	2000	2400	----	+400
AHU-2	600	3400	4000	----	+600
SF - 1	2310	----	2310	----	+2310
EF - 1	----	----	----	-100	-100
EF - 2	----	----	----	-3300	-3300
TOTALS	3310	5400	8710	-3400	-90

EXHAUST FAN SCHEDULE							
MARK	MFR.	MODEL	SERVICE	CFM	S.P.	HP	VOLTAGE
EF - 1	COOK	GC-140	TOILET EXHAUST	100	0.25"	1/8	120V / 1Ø / 4.4A
EF - 2	LARKIN	XRUB-180	OVEN EXHAUST	3300	0.625"	3/4	230V / 1Ø / 6.9A
SF - 1	LARKIN	ARS-12	OVEN INTAKE	2310	0.50"	1/2	115V / 1Ø / 9.8A

SF - 1 AND EF - 2 TO BE BALANCED TO CFM REQUIRED AND SHALL BE INTERLOCKED TO RUN SIMULTANEOUSLY.
NOTE: SUPPLY FAN SF-1 AND EXHAUST FAN EF-2 TO BE PROVIDED BY MIDWEST PIZZA EQUIPMENT.



H.V.A.C. KEY NOTES

- PROVIDE RETURN AIR FILTER GRILLES IN CEILING; PROVIDE DUCT TRANSITION FROM R.A. AT AHU TO SHEET METAL R.A. PLENUM.
- CONDENSING UNIT AT REAR OF BUILDING FOR WALK-IN COOLER; CONTRACTOR TO PROVIDE SLAB FOR MOUNTING UNIT.
- CONDENSATE DRAIN TO SANITARY SEWER P.C. (TYPICAL).
- SUPPORT HOOD SYSTEM WITH 2EA. L4X6X3/8" ANGLES SPANNING A MINIMUM OF 6 Z-CHANNELS.
- 21"X10" E.A. DUCT UP TO EF-2 ON ROOF. HOLD 10'-0" FROM O.A. INTAKES.
- 18"X16" S.A. DUCT UP TO SUPPLY FAN (SF-1) ON ROOF.
- DASHED LINE INDICATES EXHAUST FAN/SUPPLY FAN ON ROOF. REF. DWG M-2 FOR ADDITIONAL INFORMATION.
- INTAKE TO BE A MINIMUM OF 10'-0" FROM EXHAUST.
- THE EXHAUST OUTLET SHALL ALWAYS BE LOCATED AT THE REAR OF THE HOOD AND THE SUPPLY AIR INLET SHALL BE LOCATED AT THE SIDES OF THE HOOD. ACCOMMODATE THIS; CONTRACTOR SHALL PROVIDE OFFSETS IN THE SUPPLY AIR DUCT WHERE REQUIRED.
- MECHANICAL CONTRACTOR SHALL COORDINATE THERMOSTAT MOUNTING LOCATION WITH CONTRACTOR INSTALLING EQUIPMENT IN THIS AREA. THERMOSTAT SHALL NOT BE LOCATED NEAR EQUIPMENT WHICH PRODUCES HEAT OR HUMIDITY. TYPICAL FOR ALL.
- O.A. INTAKE HOOD SHALL BE A MINIMUM OF 10'-0" FROM ANY EXHAUST, GAS OR PLUMBING VENT.
- MECHANICAL CONTRACTOR SHALL INSTALL COMPRESSOR AND EVAPORATOR AND MAKE FINAL CONNECTIONS.
- G.C. TO CONSTRUCT A MAINTENANCE PLATFORM ON TOP OF COOLER FOR THE MAINTENANCE OF EXISTING 6 TON AHU.
- EXISTING EXHAUST FANS IN RESTROOMS.
- STRAP OR ANCHOR UNIT ACCORDING TO THE MANUFACTURER'S RECOMMENDATION FOR 130 MPH WINDS WITH A 30 SECOND GUST.
- SUPPORT HVAC WITH 2EA. L4X6X3/8" ANGLES SPANNING A MINIMUM OF 6 Z-CHANNELS.

RETURN / SUPPLY AIR DIFFUSER SCHEDULE

ITEM	MFR.	TYPE	MODEL	SIZE	NECK SIZE
1	TITUS	SUPPLY	300RL	8" X 8"	6"
2	TITUS	SUPPLY	300RL	8" X 10"	8"
3	TITUS	SUPPLY	TMS	24" X 24"	6"
4	TITUS	SUPPLY	TMS	24" X 24"	8"
5	TITUS	SUPPLY	TMS	24" X 24"	10"
6	TITUS	RETURN	50F-A	24" X 48"	-

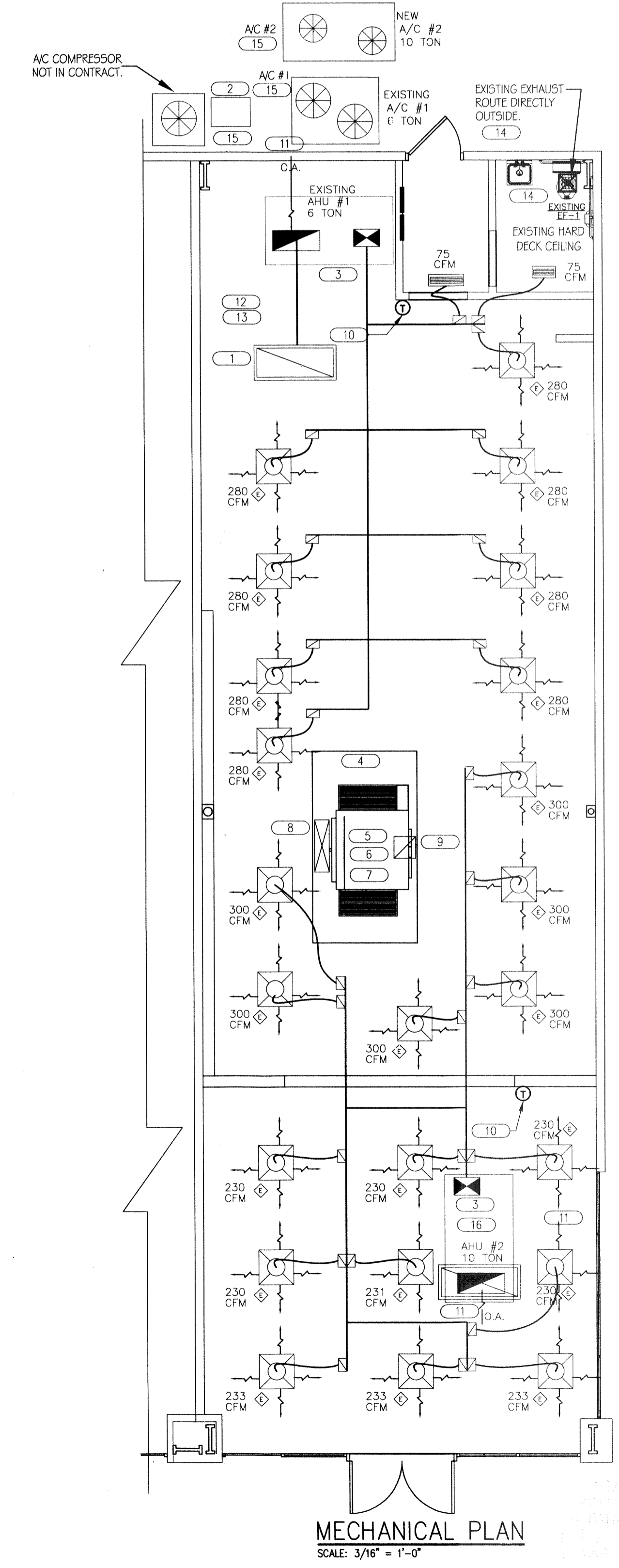
- NOTE:
- DIFFUSERS SHALL HAVE OPPOSED BLADE DAMPERS.
 - DIFFUSERS SHALL FIT 24" X 24" LAY - IN CEILING GRID.
 - DIFFUSERS SHALL BE LOUVER FACE TYPE, WITH BAKED ENAMEL FINISH EXCEPT FOR PERFORATED DIFFUSERS IN KITCHEN AREA.
 - DIFFUSERS/ GRILLES SHALL BE EQUAL TO ANEMOSTAT, CARNES, METALARE, TITUS
 - RA GRILLES TO BE ALUMINUM, EGG-CRATE TYPE, 1/2"X1/2" SPACING WITH WHITE FINISH.

RESPONSIBILITY NOTES

- ROOF OPENINGS FOR H.V.A.C. EQUIPMENT AND RELATED WORK SHALL BE THE RESPONSIBILITY OF THE H.V.A.C. SUBCONTRACTOR. HE SHALL NOTIFY THE LANDLORD'S ROOFER FOR THIS WORK TO MAINTAIN THE ROOF BOND.
- THE H.V.A.C. SUBCONTRACTOR SHALL IDENTIFY ALL ROOF MOUNTED H.V.A.C. EQUIPMENT AND APPARATUS WITH 2" HIGH PAINTED SIGNALLED STORE NAME ON ALL SIDES OF THIS EQUIPMENT.
- IF DRAWINGS CALL FOR THE REUSE OF EXISTING EQUIPMENT, THE TENANT'S GENERAL CONTRACTOR SHALL VERIFY THAT ALL SUCH EQUIPMENT IS IN PROPER WORKING ORDER, OR TAKE THE NECESSARY STEPS TO ACCOMPLISH SUCH. IF REPLACEMENT IS REQUIRED, USE THE EQUIPMENT AND WORKING AS SPECIFIED ON THESE SCHEDULES OR AS CALLED OUT ON THE SPECIFICATIONS ON THIS SHEET. ALL SUCH ITEMS MUST MEET ALL GOVERNING CODES AND STANDARDS OF PRACTICE.

MECHANICAL NOTES:

- CONTRACTORS AND SUB-CONTRACTORS SHALL CAREFULLY REVIEW THE CONSTRUCTION DOCUMENTS. INFORMATION REGARDING THE COMPLETE WORK IS DISPERSED THROUGHOUT THE DOCUMENT SET AND CANNOT BE ACCURATELY DETERMINED WITHOUT REFERENCE TO THE COMPLETE DOCUMENT SET.
- ALL WORK SHALL COMPLY WITH STATE AND LOCAL CODE REQUIREMENTS AS APPROVED AND AMENDED BY THE GOVERNING CITY. PURCHASE ALL PERMITS ASSOCIATED WITH THE WORK. OBTAIN ALL INSPECTIONS REQUIRED BY CODE.
- MECHANICAL CONTRACTOR SHALL USE THE LANDLORD ROOFING CONTRACTOR FOR ALL PENETRATIONS.
- USE OF COMBUSTIBLE MATERIALS IS NOT ALLOWED IN THE RETURN AIR PLENUM. MATERIALS USED IN THE PLENUM SHALL HAVE FLAME SPREAD RATING NOT TO EXCEED 25, AND SMOKE DEVELOPED RATING NOT TO 50 WHEN TESTED IN ACCORDANCE WITH ASTM E 84. ALL EXPOSED WIRING IN THE PLENUM SHALL BE PLENUM RATED.
- CONTRACT LANDLORD APPROVED ROOFING CONTRACTOR TO FLASH AND SEAL ROOF PENETRATIONS TO MAINTAIN ROOFING WARRANTY.
- ALL ROOF PENETRATIONS MUST BE APPROVED BY THE LANDLORD PRIOR TO INSTALLATION.
- EXPOSED DUCTWORK TO BE GALVANIZED SHEET METAL PER SMACNA STANDARDS. LINE WITH NEOPRENE COATED 1.0", 1.5 POUNDS PER CUBIC FOOT DUCT INSULATION.
- ROUND FLEXIBLE DUCT TO BE UL-181, CLASS 1, AIR DUCT MATERIALS.
- DUCT SIZES SHOWN ARE CLEAR INSIDE DIMENSIONS.
- IN ALL SYSTEMS OVER 2,000 CFM AND LESS THAN 15,000 CFM, SMOKE DETECTORS SHALL BE INSTALLED IN ACCORDANCE WITH NFPA 72E IN THE RETURN DUCT DOWNSTREAM OF THE AIR HANDLING UNIT AND ALL FILTERS, TO AUTOMATICALLY STOP THE FAN.
- PROVIDE U.L. LISTED 125 F FIRESTAT IN RETURN AIR OF EACH SYSTEM UNDER 2,000 CFM TO SHUT DOWN FAN IN THE EVENT OF FIRE.
- PROVIDE U.L. RATED FIRE DAMPERS WHERE REQUIRED AT ALL DUCT PENETRATIONS OF FIRE-RATED ASSEMBLIES AND WHERE REQUIRED BY CODE, INCLUDING OUTSIDE AIR INTAKES.
- ALL AIR HANDLING SYSTEMS TO BE BALANCED TO ASSURE PROPER AIR FLOWS PER PLANS.
- EXHAUST FAN EQUAL TO BROAN MODEL NO. 100 CF. OR EQUAL. FAN SHALL BE CONTROLLED BY SWITCH ON WALL AT LIGHT SWITCH. PROVIDE BACK DRAFT DAMPER.
- PROVIDE AND INSTALL WATER PROOF GRILLE VENT ON ROOF FOR TOILET EXHAUST.
- ALL ELECTRICAL, MECHANICAL AND PLUMBING PENETRATING FIRE PARTITIONS SHALL BE FIRE CAULKED. (PENETRATIONS THROUGH RATED CONSTRUCTION SHALL BE SEALED WITH A MATERIAL CAPABLE OF PREVENTING THE PASSAGE OF FLAMES AND HOT GASES WHEN TESTED IN ACCORDANCE WITH ASTM-E814.)



MECHANICAL PLAN
SCALE: 3/16" = 1'-0"