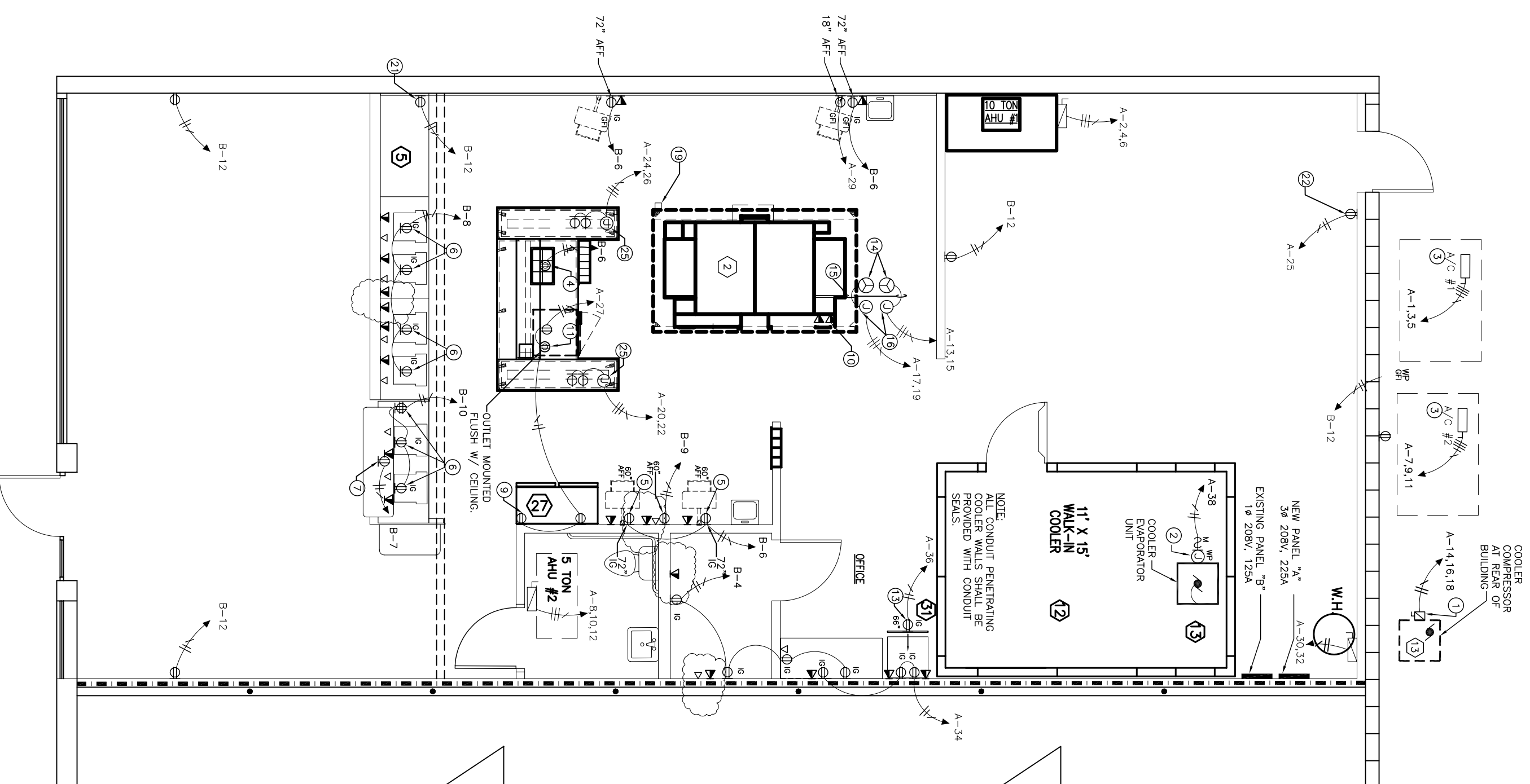
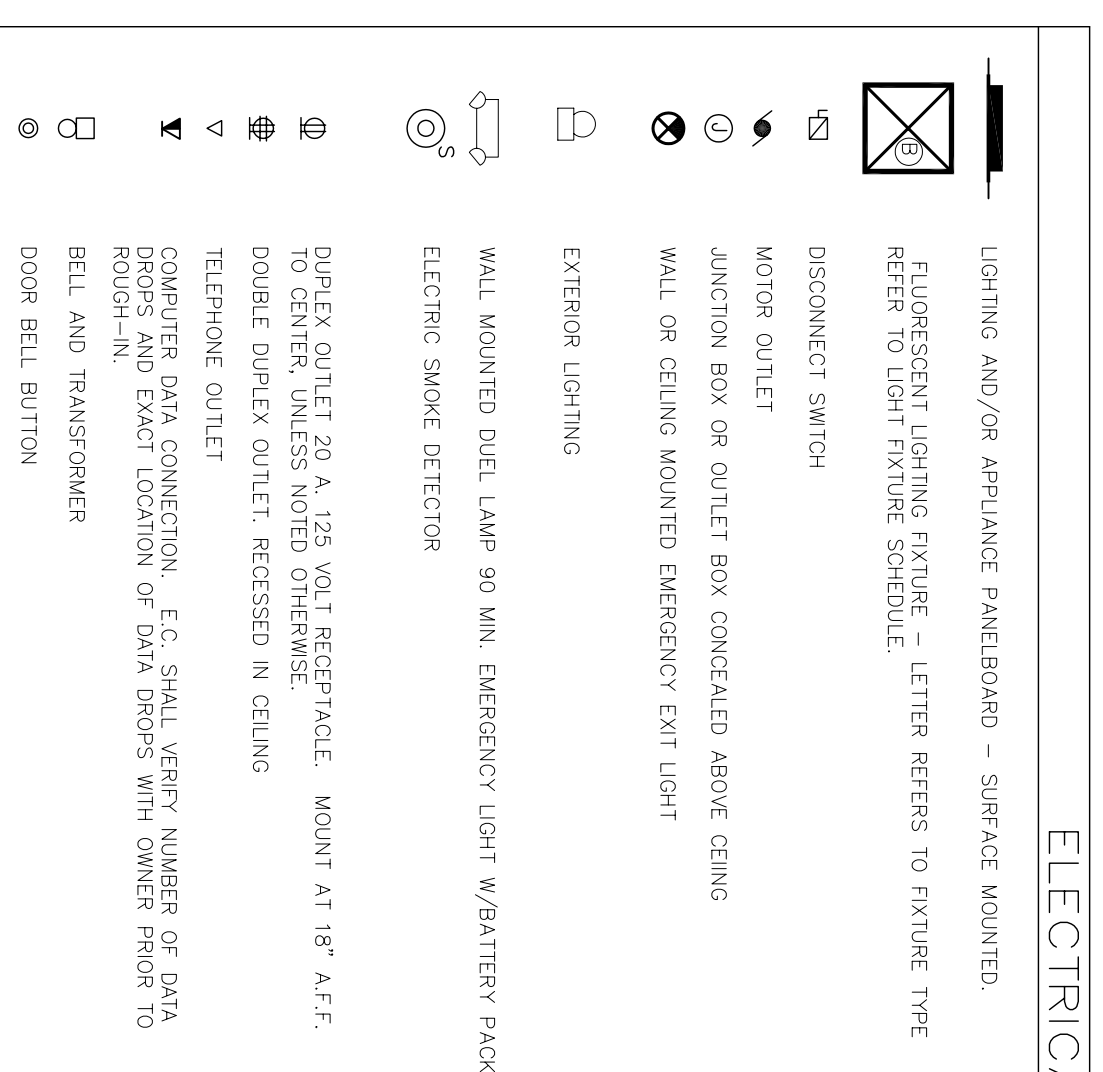


EQUIPMENT SCHEDULE	
MARK	ITEM
2	OVERHOOD
3	MAKELINE - VICTORY PT - 88 - S - PJ
4	48"X96" CUTTING/BOX TABLE W/ (2) HEAT SHELVES
5	TELEPHONE COUNTER W/ ADJUSTABLE SHELVES
12	COOLER
13	KOLD PACK SPLIT SYSTEM
27	CAN BEVERAGE COOLER AND DISPENSER
31	TELEPHONE SYSTEM



POWER PLAN
SCALE 3/16" = 1'-0"



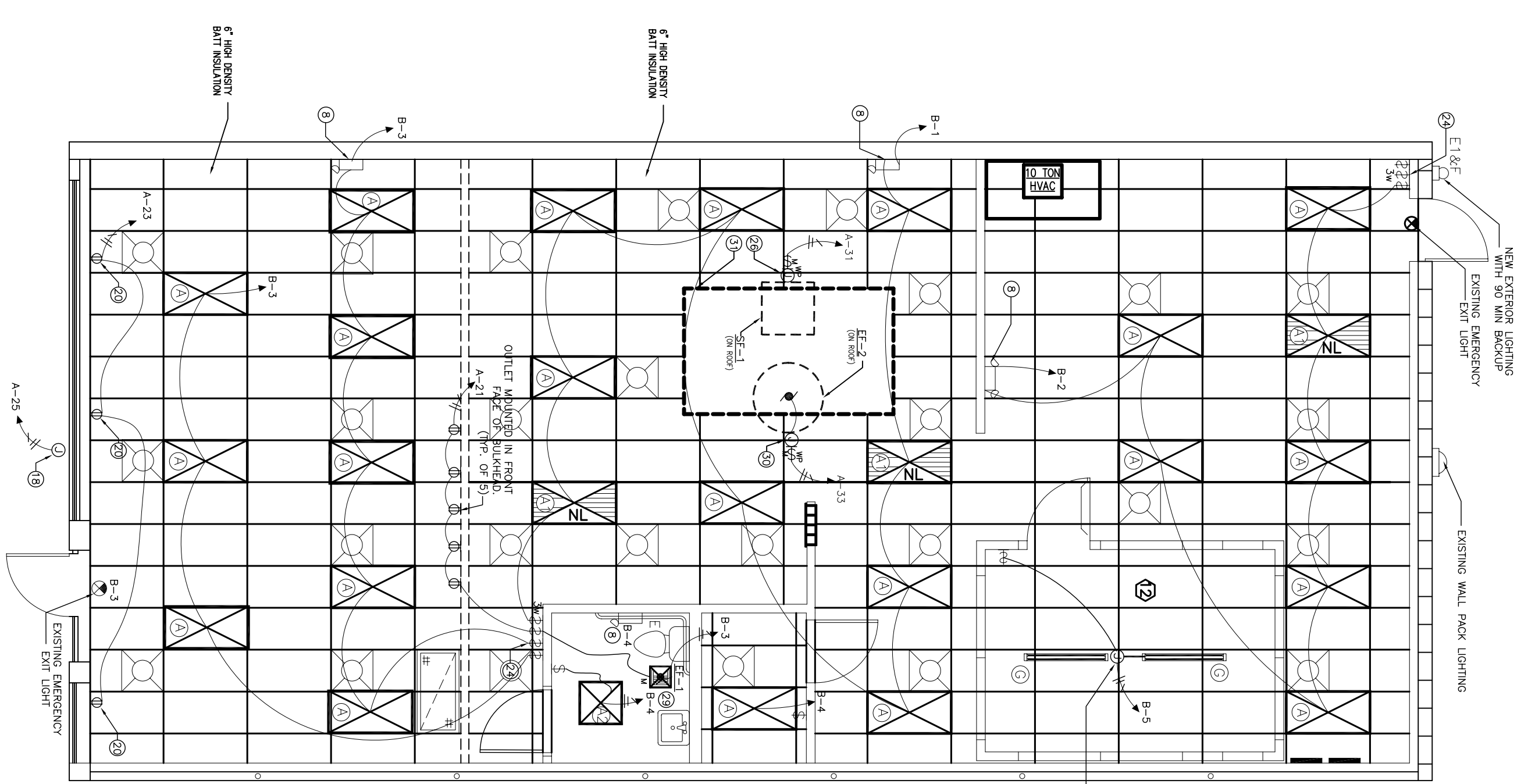
ELECTRICAL LEGEND

ELECTRICAL SHEET NOTES:	
1	NUMBER IN HEX SYMBOL REFERS TO EQUIPMENT SPECIFIED IN EQUIPMENT SCHEDULE - SEE SHEET A-2
2	1P, 20AMP 125 VOLT MOTOR RATED TOGGLE SWITCH WITH WEATHER PROOF ENCLOSURE
3	THREE-WAY SWITCH
4	SPECIAL RECEPTACLE
5	WEATHERPROOF
6	GROUND FAULT INTERRUPTOR
7	ISOLATED GROUND
8	MOUNTING HEIGHT ABOVE FINISH FLOOR
9	NIGHT LIGHT
10	ELECTRICAL CONTRACTOR
11	KITCHEN EQUIPMENT SUPPLIER
12	FULL VOLTAGE NON-REVERSING
13	INDICATES CONDUIT RUN CONCEALED IN WALLS OR ABOVE CEILING. UNLESS OTHERWISE NOTED OTHERWISE.
14	CONDUCTORS WIRE SIZES ARE #12 AWG UNLESS NOTED OTHERWISE.
15	CONDUIT BARS INDICATE CONDUCTORS
16	PHASE (HOT)
17	NEUTRAL (GROUND)
18	EQUIPMENT GROUNDING

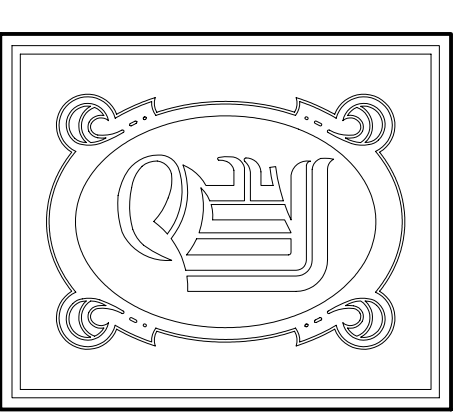
ELECTRICAL SHEET NOTES:

- 3P, 30AMP, 240V, NEMA 3R RUSBLE DISCONNECT SWITCH FOR CONNECTION TO COOLER COMPRESSOR. FUSE PER UNIT NAME PLATE.
- JUNCTION BOX WITH MOTOR RATED TOGGLE SWITCH IN WEATHER PROOF ENCLOSURE, FOR CONNECTION TO EVAPORATOR UNIT.
- INSTALL NEMA 3R, 3P, 240V RUSBLE DISCONNECT(S) RATED FOR SYSTEM INSTALLED. FUSE PER UNIT NAME PLATE.
- ONE (1) TWIST-LOCK OUTLET IN CEILING WITH TWIST-LOCK STRAIN-RELIEF DROP CORD. TERMINATING 12" BELOW CUT-TABLE HEIGHT IN A SINGLE STANDARD 3-PHASE GROUNDING OUTLET. OUTLET AND CORD SHALL BE PLACED AT THE SAME LOCATION AS THE OUTLETS FOR THE OUT-TABLE HEAT STRIPS.
- MOUNT RECEPTACLE JUST BELOW SHELF HEIGHT. REFER TO ARCHITECT'S DRAWINGS FOR SHELF HEIGHT. RECEPTACLE AND COMPUTER CONNECTION SHALL BE STICK MOUNTED.
- MOUNT RECEPTACLE UNDER COUNTER TOP AS HIGH AS POSSIBLE. E.C. SHALL VERIFY EXACT LOCATION WITH OWNER PRIOR TO ROUGH-IN.
- DUPLEX RECEPTACLE FOR CONNECTION TO PAPA JOHN'S LED LIGHTS. MOUNT RECEPTACLE UNDER COUNTER TOP AS HIGH AS POSSIBLE. E.C. SHALL VERIFY EXACT LOCATION WITH OWNER PRIOR TO ROUGH-IN.
- VERIFY WITH OWNER EXACT LOCATION AND MOUNTING HEIGHT OF EMERGENCY EGRESS LIGHTING ABOVE DOOR AND PLATE GLASS.
- ELECTRICAL CONTRACTOR SHALL INSTALL DUPLEX RECEPTACLE 6" BELOW LAV-IN CEILING AND 15" RADUS MINIMUM FROM GAS-FIRED OVEN FOR CONNECTION TO CARBON MONOXIDE DETECTOR. GENERAL CONTRACTOR SHALL PROVIDE AND INSTALL DETECTOR.
- INSTALL 2 DATA PORTS FOR OENS.
- ONE (1) TWIST-LOCK OUTLET IN CEILING WITH TWIST-LOCK STRAIN-RELIEF DROP CORD TERMINATING 12" BELOW CUT-TABLE HEIGHT. ELECTRICAL CONTRACTOR SHALL INSTALL JUNCTION BOX UNDER CUT-TABLE AND NEXT TO REFRIGERATION UNIT. FIELD VERIFY EXACT MOUNTING LOCATION AND CONNECTION REQUIREMENTS PRIOR TO ROUGH-IN.
- MOUNT ON UNIT.
- TELEPHONE SYSTEM FURNISHED BY PHONE CONTRACTOR MOUNT ON 24"X24"X3/4" PLWOOD BACKBOARD. BOTTOM OF BACKBOARD AT 72" A.F.F. BACKBOARD BY ELECTRICAL CONTRACTOR.
- HUBBELL #2413 AND HUBBELL #2411.
- (4) #12 AWG BRCP CORDS TO PIZZA OVEN RECEPTACLE. CONNECTED TO JUNCTION BOX AT CEILING. DO NOT RUN THROUGH SUSPENDED CEILING TILE.
- ELECTRICAL CONTRACTOR SHALL INSTALL JUNCTION BOX BELOW SUSPENDED CEILING AND MAKE HARD WIRE CONNECTION TO THE SO CORD DROP TO PIZZA OVEN RECEPTACLE. PROVIDE STRAIN RELIEF AND CONNECTION TO THE SO CORD DROP. VERIFY EXACT MOUNTING LOCATION AND CONNECTION REQUIREMENTS PRIOR TO ROUGH-IN.
- JUNCTION BOX FOR CONNECTION TO AWNING LIGHTING. FIELD VERIFY EXACT MOUNTING LOCATION AND CONNECTION REQUIREMENTS PRIOR TO ROUGH-IN.
- JUNCTION BOX FOR CONNECTION TO PAPA JOHN'S SOLI FIELD VERIFY EXACT MOUNTING LOCATION AND CONNECTION REQUIREMENTS PRIOR TO ROUGH-IN.
- STAR/STOP SWITCH WITH PILOT LIGHT FOR EF-2 AND SF-1. PROVIDE WIRING AS REQUIRED.
- DUPLEX RECEPTACLE INSTALLED FLUSH IN CEILING FOR WINDOW SIGNAGE. COORDINATE EXACT LOCATION WITH OWNER PRIOR TO ROUGH-IN.
- DUPLEX RECEPTACLE INSTALLED FLUSH IN CEILING FOR CCTV MONITOR/CAMERA. COORDINATE EXACT LOCATION WITH OWNER PRIOR TO ROUGH-IN.
- TIME CLOCK FOR LIGHTS AND SIGNAGE SHALL BE FOUR POLE, 7 DAY TIMER WITH QUARTZ CRYSTAL. PARSON MODEL NO. 7007-00 OR EQUAL.
- JUNCTION BOX WITH MOTOR RATED TOGGLE SWITCH FOR 120VAC CONNECTION TO HOOD SUPPRESSION CONTROL PANEL. ELECTRICAL CONTRACTOR SHALL VERIFY EXACT MOUNTING LOCATION AND CONNECTION REQUIREMENTS WITH HOOD SUPPLIER PRIOR TO ROUGH-IN.
- PROVIDE COMMERCIAL GRADE 20 AMP LIGHT SWITCHES. SWITCH BANK FOR CONTROL OF ALL LIGHTS. ELECTRICAL CONTRACTOR SHALL COORDINATE LOCATION WITH OWNER PRIOR TO ROUGH-IN.
- ELECTRICAL CONTRACTOR SHALL INSTALL JUNCTION BOX BELOW SUSPENDED CEILING AND MAKE HARD WIRE CONNECTION TO TYPE SO CORD DROP TO HEAT STRIP RECEPTACLE. PROVIDE STRAIN RELIEF FOR CONNECTION AT JUNCTION BOX. FIELD VERIFY EXACT MOUNTING LOCATION AND CONNECTION REQUIREMENTS PRIOR TO ROUGH-IN.
- JUNCTION BOX WITH MOTOR RATED TOGGLE SWITCH IN NEMA 3R ENCLOSURE FOR CONNECTION TO SUPPLY FAN. FIELD VERIFY ELECTRICAL REQUIREMENTS WITH HOOD SUPPLIER.
- NEW THREE PHASE METER SOCKET WITH NEW 3P 208V 225A TENANT SERVICE DISCONNECT SWITCH.
- NEW TENANT SPACE FEEDER. E.C. SHALL CONNECT NEW FEEDER TO NEW ELECTRICAL PANEL AND MAKE FINAL CONNECTION.
- EXHAUST FAN SHALL BE CONNECTED TO THE LIGHT SWITCH FOR THE DINING ROOM.
- JUNCTION BOX WITH MOTOR RATED TOGGLE SWITCH IN NEMA 3R ENCLOSURE FOR CONNECTION TO EXHAUST FAN. FIELD VERIFY ELECTRICAL REQUIREMENTS WITH HOOD SUPPLIER.
- RELOCATE HOOD FAN CONTROL TO WALL LOCATION AS DIRECTED BY G.C.

LIGHT FIXTURE SCHEDULE					
MARK	DESCRIPTION	LAMP	MODEL NO.	MANUF.	
A	2X4 LAV-IN FLUORESCENT WITH ELECTRONIC BALLAST	(3) F32-T8 3500K	F32-T8-3500K	LITHONIA	
A1	4" NIGHT LIGHT	(3) F32-T8 3500K	F32-T8-3500K	LITHONIA	
A2	4" NIGHT LIGHT	(3) F32-T8 3500K	F32-T8-3500K	LITHONIA	
B	EXISTING/RELOCATED FAN/LIGHT COMBINATION	(1) @ 100W	751	BROAN	
C	WALL MOUNTED BRACKET		WPCW20T1-120	LITHONIA	
D	EMERGENCY DUAL LAMP EXIT LIGHT	2 - 28W DIT	H04SWR120/277	LITHONIA	
E	EMERGENCY DUAL LAMP W/BATTERY W/BACK-UP. INSTALL 94" A.F.F.	HIT 5.4W	ELM2	LITHONIA	
E1	EMERGENCY BATTERY BACKUP. REMOVE CAPABILITY FOR 24V/90 MIN. MOUNT ABOVE INTERIOR-SIDE OF DOOR.	N/A	6ELW2P0	LITHONIA	
F	EMERGENCY EGRESS OUTDOOR REMOTE HEAD MOUNT ABOVE DOOR.	2-8W HIT	ELAM1WH0806	LITHONIA	
G	4 FT. FLUORESCENT WALL/CEILING BRACKET W/ WET LOCATION LISTING.	2 - 32W T8	DMW-2-32-120-CW	LITHONIA	



LIGHTING PLAN
SCALE 3/16" = 1'-0"



DAMMON ENGINEERING, INC.
 CHIEF ENGINEER
 ENANNETT DAMMON, P.E.
 CHIEF ARCHITECT
 ROBERT WILLISET

554 OLD SPANISH TRAIL
 SLIDELL, LA, 70458
 OFFICE: 985-649-5632
 FAX: 985-641-15950

WEBSITE:
 WWW.DAMMONENGINEERING.COM
 EMAIL:
 DAMMONENG@BELLSOULTH.NET

PAPA JOHN'S
 PIZZA
 TENANT
 BUILDOUT

INVESTIGATION
 EXPERT WITNESS

3013 PONTCHARTRAIN DR.
 SLIDELL
 LOUISIANA
 70458

POWER
 AND
 LIGHTING
 PLAN

REV: #1 - 9/9/2011
 SCALE: AS NOTED
 JOB#: 2119
 DATE: 8/12/2011
 SHEET 7