

**DAMMON**  
ENGINEERING, INC.

CHIEF ENGINEER  
EMMETT  
DAMMON, P.E.

CHIEF ARCHITECT  
ROBERT  
WILTSE

1095 FLORIDA AVENUE  
SLIDELL, LA. 70456  
OFFICE: 985-649-5932  
FAX: 985-641-5950

WEBSITE:  
WWW.DAMMONENGINEERING.COM  
EMAIL:  
DAMMONING@BELLOUTH.NET

ARCHITECTURE  
ENGINEERING  
STUDIES  
PLANNING  
INVESTIGATION  
EXPERT WITNESS

**NEW OFFICE  
COMPLEX**

CHILD DEVELOPMENT  
COUNCIL OF  
ACADIANA, INC.  
OPELOUSAS, LA

**REFLECTED  
CEILING PLAN**

REV: 12-7-09 CONST.

SCALE: AS NOTED

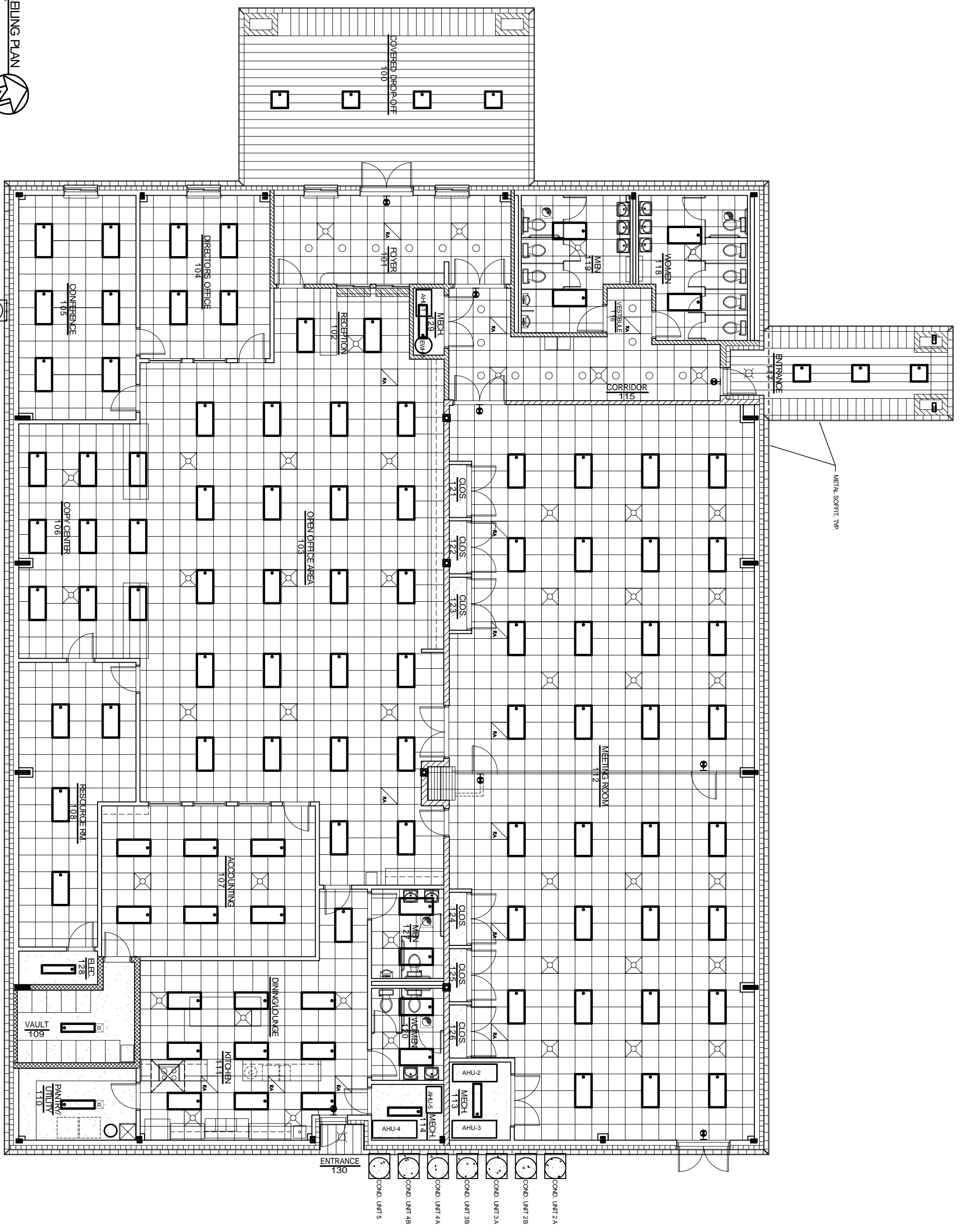
JOB#: 2030

DATE: 10-19-09

SHEET 14

**A-5**

OF 26



REFLECTED CEILING PLAN  
SCALE 3/16" = 1'-0"

