

- LEGEND**
- ⬤ - POWER PANEL
  - ⬤ - 120V, 20A DUPLEX RECEPTACLE, 20A, 1Ø, 120V, 3 POLES, GROUNDED
  - ⬤ - 120V, GROUND FAULT INTERRUPTER RECEPTACLE
  - ⬤ - 120V, WEATHER PROOF RECEPTACLE, GROUNDED
  - ⬤ - 208V, RECEPTACLE, 1Ø, 50A, GROUNDED
  - ⬤ - COMBINATION TEL/DATA OUTLET 1-GANG J.B. W/ 1" C (E) STUBBED UP ABOVE ACCESSIBLE CEILING W/ PULL STRING
  - ⬤ - 208V, RECEPTACLE, 1Ø, 20A, GROUNDED
  - ⬤ - 120V, RECEPTACLE - FOURPLEX, 1Ø, 20A, GROUNDED
  - ⬤ - DISCONNECT
  - ⬤ - EXHAUST FAN
  - ⊕ - xx GAL WATER HEATER



**DAMMON ENGINEERING, INC.**

CHIEF ENGINEER  
EMMETT DAMMON, P.E.

CHIEF ARCHITECT  
ROBERT WILTSE

1095 FLORIDA AVENUE  
SLIDELL, LA. 70458  
OFFICE: 985-649-5832  
FAX: 985-641-5950

WEBSITE:  
WWW.DAMMONENGINEERING.COM

EMAIL:  
DAMMONENG@BELLSOUTH.NET

ARCHITECTURE  
ENGINEERING  
STUDIES  
PLANNING  
INVESTIGATION  
EXPERT WITNESS

NEW OFFICE COMPLEX

CHILD DEVELOPMENT  
COUNCIL OF  
ACADIANA, INC.  
OPELOUSAS, LA

POWER PLAN

REV: 12-7-09 CONST.  
9-3-10 C.O.

SCALE: AS NOTED

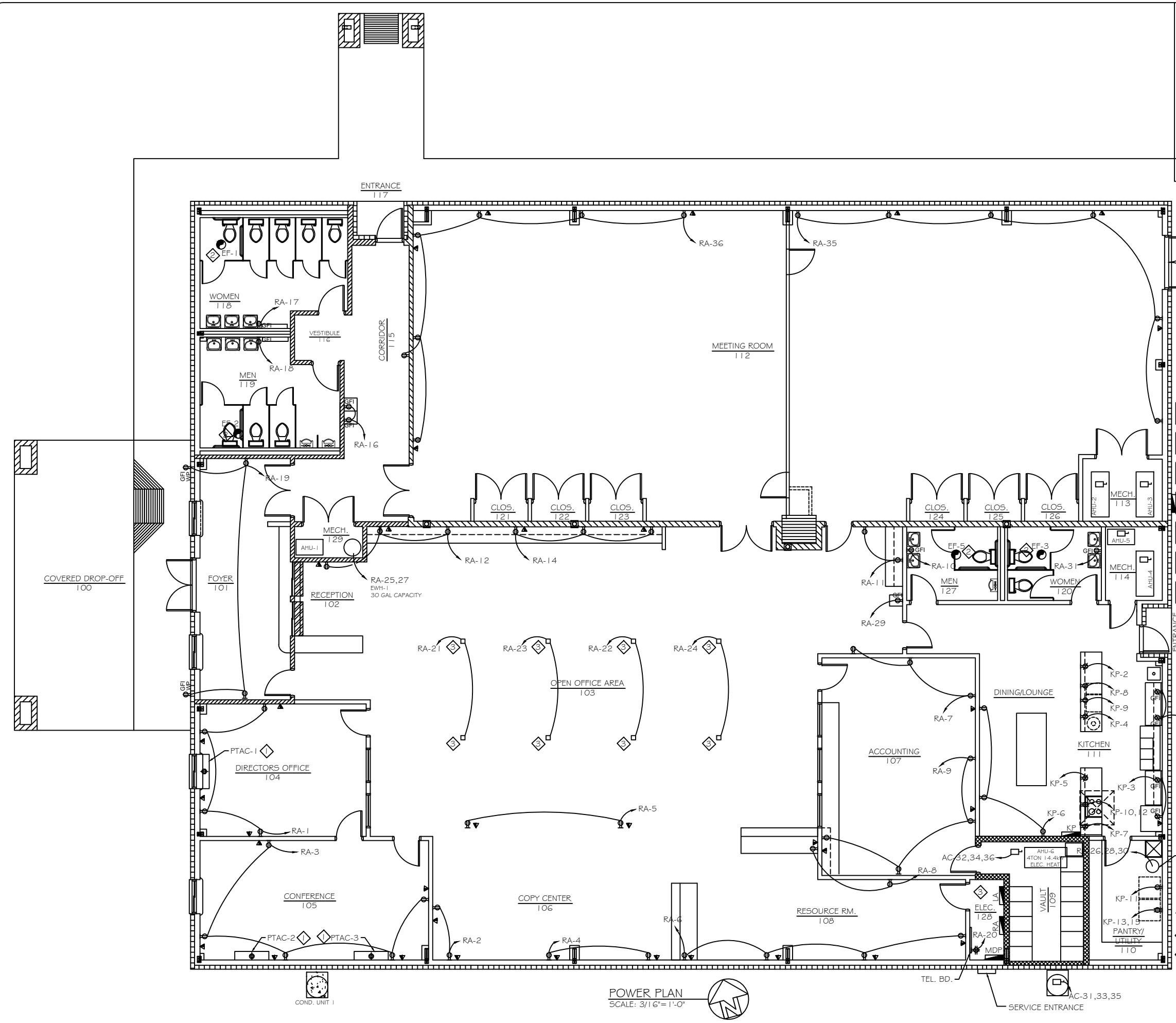
JOB#: 2030

DATE: 10-19-09

SHEET 23

E-3

OF 26



- SPECIFIC NOTES**
- ⬤ INSTALL ELECTRICAL WIRING FOR PTAC PER MFR. REQUIREMENTS.
  - ⬤ CONNECT BATHROOM EXHAUST FAN TO AND INTERLOCK WITH LIGHTING CIRCUIT.
  - ⬤ COORDINATE LOCATION OF TEL / PWR POLE WITH OWNER PRIOR TO ROUGH-IN.

POWER PLAN  
SCALE: 3/16"=1'-0"