



**DAMMON ENGINEERING, INC.**  
 CHIEF ENGINEER  
 EMMETT DAMMON, P.E.

CHIEF ARCHITECT  
 ROBERT WILTSE

1095 FLORIDA AVENUE  
 SLIDELL, LA. 70458  
 OFFICE: 985-649-5832  
 FAX: 985-641-5950

WEBSITE:  
 WWW.DAMMONENGINEERING.COM  
 EMAIL:  
 DAMMONENG@BELLSOUTH.NET

ARCHITECTURE  
 ENGINEERING  
 STUDIES  
 PLANNING  
 INVESTIGATION  
 EXPERT WITNESS

NEW OFFICE  
 COMPLEX

CHILD DEVELOPMENT  
 COUNCIL OF  
 ACADIANA, INC.  
 OPELOUSAS, LA

FLOOR  
 PLAN

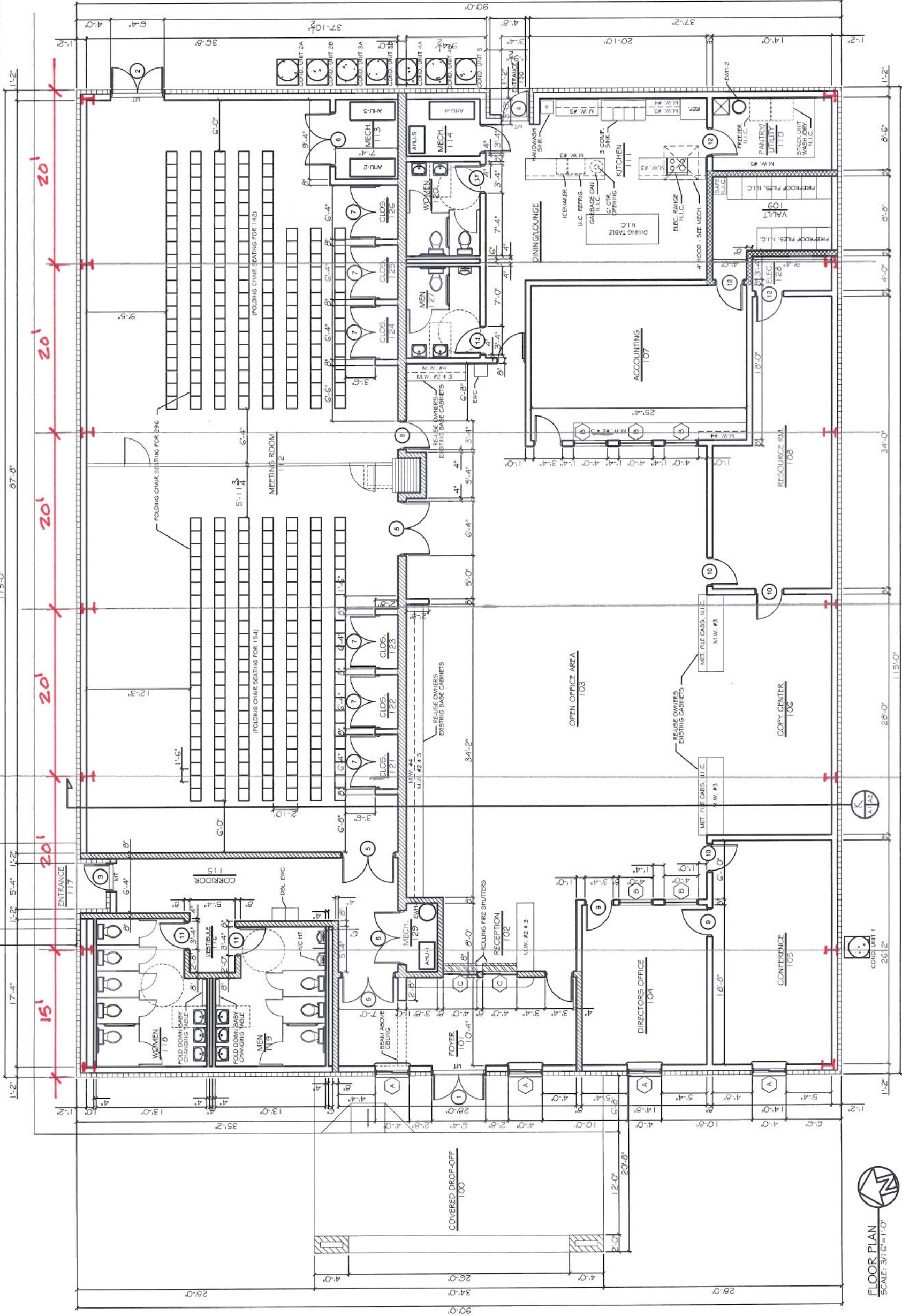
REV:  
 SCALE: AS NOTED  
 JOB#: 2030  
 DATE: 7-2-09  
 SHEET

A-1

OF

- LEGEND**
- 1 HR. RATED CONST. (UL--)
  - DEMISE TO ROOF DECK
  - ROLLING FIRE SHUTTER
  - VAULT CONSTRUCTION
  - 4" x 8" OR 12" CMU
  - 4" FACE BRICK

- CONTRACTOR'S OPTION**
- PROVIDE PRE-ENGINEERED METAL BUILDING PACKAGE TO INCLUDE STRUCTURAL FRAME, ROOF, FASCIA, SOFFIT, GUTTERS & DOWNSPOUTS, TO MEET IBC 2006 REQUIREMENTS, IN LIEU OF BEARING MASONRY WALL, METAL TRUSS, AND METAL DECK SYSTEM SHOWN.
  - PROVIDE EXTERIOR WALL CONSTRUCTION TO CONSIST OF FACE BRICK ANCHORED TO GALV. METAL STUD WALL W/ DENSGLOSS SHEATHING AND VAPOR BARRIER TO MEET IBC 2006 REQUIREMENTS, WITH 3/8" INTERIOR GYPSUM WALLBOARD FINISH, IN LIEU OF BRICK & CMU WALL SYSTEM SHOWN.
  - PROVIDE INTERIOR WALL PARTITIONS TO CONSIST OF 3/4" GYPSUM WALLBOARD ON EA. SIDE OF METAL STUDS WITH FIRE RATINGS IN AREAS SHOWN, IN LIEU OF CMU WALL SYSTEM SHOWN.



**FLOOR PLAN**  
 SCALE: 3/16" = 1'-0"