

GENERAL NOTES

1. ALL WORK SHALL COMPLY WITH APPLICABLE NATIONAL, STATE AND LOCAL CODES, RULES, REGULATIONS, AND REQUIREMENTS OF THE SERVICE UTILITY COMPANY.
2. REFER TO ARCHITECTURAL DRAWINGS FOR EXACT LOCATION AND MOUNTING INSTRUCTIONS FOR ALL LIGHT FIXTURES. NOTIFY THE ARCHITECT AND ENGINEER OF ANY DISCREPANCIES BETWEEN THESE PLANS AND THE ARCHITECTURAL PLANS RELATING TO QUANTITY, TYPE AND LOCATION OF DEVICES AND/OR FIXTURES.
3. WHEN SPECIFIC LIGHT FIXTURE HAS BEEN SPECIFIED IN THE FIXTURE SCHEDULE, ELECTRICAL SHALL PROVIDE COMPLETE ASSEMBLY INCLUDING ALL PARTS AND HARDWARE TO INSURE PROPER FUNCTIONING FIXTURE.
4. ALL CONDUCTORS SHALL BE #12 AWG UNLESS NOTED OTHERWISE.
5. ALL 120V RINGS LONGER THAN 60 FEET SHALL BE #10 AWG AND 277V RINGS LONGER THAN 150 FEET SHALL BE #10 AWG UNLESS NOTED OTHERWISE.
6. ALL CONDUCTORS SHALL BE COPPER.
7. WHERE CONDUCTOR GAGES ARE NOTED ON DRAWINGS, THAT WIRE SIZE SHALL BE THROUGH THE ENTIRE RUN UNLESS OTHERWISE NOTED.
8. MOUNTED LIGHT SWITCHES, AS APPLICABLE UNLESS NOTED OTHERWISE ON ARCHITECTURAL DRAWINGS.
9. ALL GANGED SWITCHES SHALL HAVE A COMMON SEAMLESS FACERATE. EACH MULTI-GANGED BOX SHALL BE NO MORE THAN SIX (6) SWITCHES WIDE. WHERE MORE THAN SIX (6) SWITCHES ARE SHOWN AT ONE (1) LOCATION, ADDITIONAL MULTI-GANGED BOXES SHALL BE STACKED VERTICALLY AND THE WIDTH OF THE MULTI-GANGEDS SHALL BE AS EVEN AS POSSIBLE.
10. EACH DIMMER SWITCH SHALL HAVE A RATING 25% HIGHER THAN THE TOTAL WATTAGE OF ALL LIGHTS TO BE CONTROLLED BY THE DIMMER. DIMMER SIZES 600, 1000, 1500, AND 2000 WATTS, LUTRON DIMMERS SHALL BE USED UNLESS OTHERWISE NOTED. DIMMER SWITCHES SHALL BE TRON NOVAT-STAR, FLUORESCENT AND LOW VOLTAGE DIMMERS HAL LITE LUTRON NOVAT-STAR.
11. WHERE FLUORESCENT FIXTURES ARE SHOWN TO BE DIMMED, THE DIMMER WITH THE SPECIFIED DIMMERS.
12. WHERE LED FIXTURES/LAMPS ARE SHOWN TO BE DIMMED, THE DIMMER SHALL BE COMPATIBLE WITH THE FIXTURE/LAMP SPECIFIED OR PROVIDED.
13. ALL EMERGENCY LIGHT FIXTURES SHALL HAVE 90 MINUTE BATTERY BACKUP WITH INTEGRAL TEST BUTTON AND SHALL BURN CONTINUOUSLY.
14. ALL FLUORESCENT FIXTURES THAT UTILIZE DOUBLE ENDED LAMPS AND CONTAIN BALLASTS SHALL BE PROVIDED WITH A DISCONNECTING MEANS IN ACCORDANCE WITH NEC 410.156.

LEGEND	
	2x4 SUSPENDED FLUORESCENT LIGHT FIXTURE (3 - 32w BULB) LITHONIA 2675 3 32 A12
	EMERGENCY LIGHT FIXTURE (12w)
	EXIT LIGHT FIXTURE - CEILING MOUNTED (10w)
	ELECTRIC PANEL BOARD
	CIRCUIT HOME RUN
	LIGHT SWITCH 120V COMMERCIAL GRADE
	LIGHT SWITCH - 3-WAY 120V COMMERCIAL GRADE
	JUNCTION BOX
	EXTERIOR LED WALL MOUNTED LIGHT FIXTURE WITH 40 MIN. BACK-UP (75w)

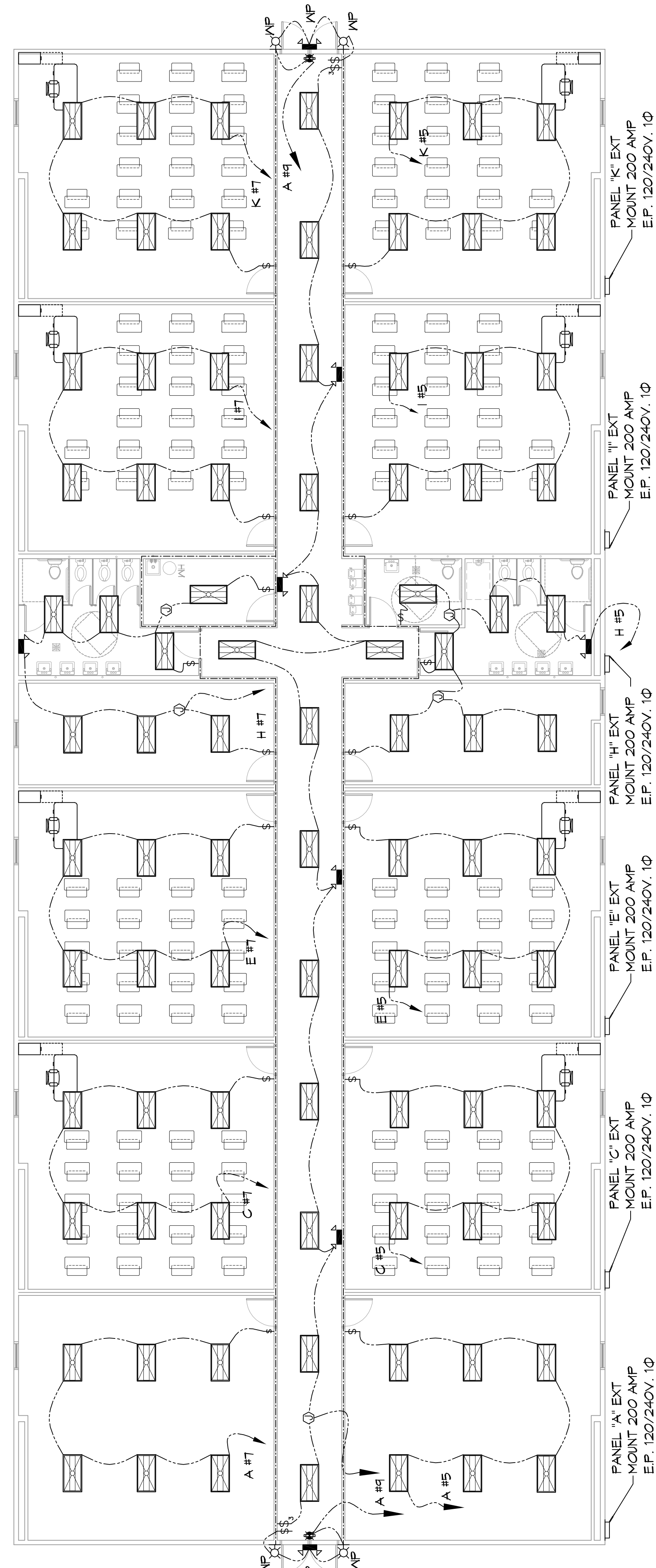
CONTRACTOR NOTE:
ALL TRAILERS HAVE BEEN PRE-MISSED WITH THE EXCEPTION OF HALLWAY LIGHTS. ELECTRICAL IS TO VERIFY AND NOTE ANY DEVIATIONS.

GENERAL NOTES

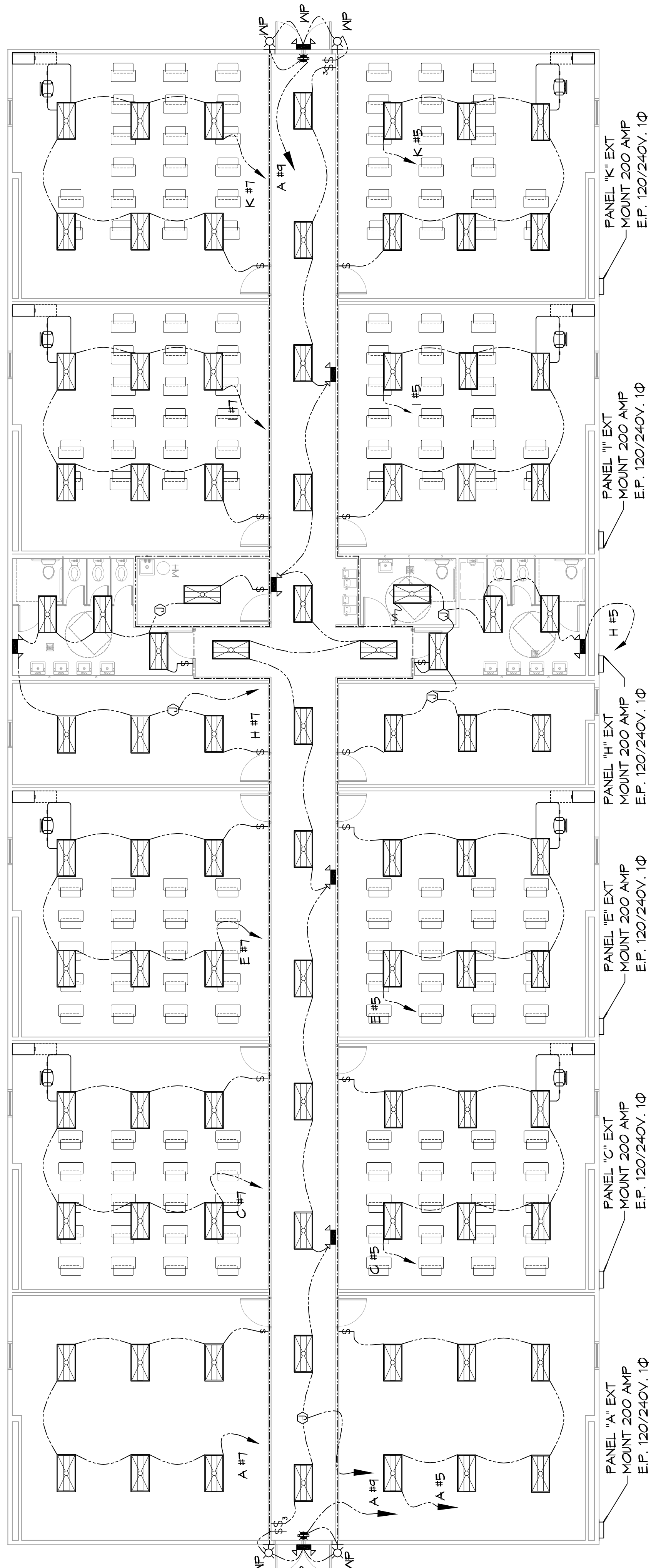
1. ALL WORK SHALL COMPLY WITH APPLICABLE NATIONAL, STATE AND LOCAL CODES, RULES, REGULATIONS, AND REQUIREMENTS OF THE SERVICE UTILITY COMPANY.
2. REFER TO ARCHITECTURAL DRAWINGS FOR EXACT LOCATION AND MOUNTING INSTRUCTIONS FOR ALL LIGHT FIXTURES. NOTIFY THE ARCHITECT AND ENGINEER OF ANY DISCREPANCIES BETWEEN THESE PLANS AND THE ARCHITECTURAL PLANS RELATING TO QUANTITY, TYPE AND LOCATION OF DEVICES AND/OR FIXTURES.
3. WHEN SPECIFIC LIGHT FIXTURE HAS BEEN SPECIFIED IN THE FIXTURE SCHEDULE, ELECTRICAL SHALL PROVIDE COMPLETE ASSEMBLY INCLUDING ALL PARTS AND HARDWARE TO INSURE PROPER FUNCTIONING FIXTURE.
4. ALL CONDUCTORS SHALL BE #12 AWG UNLESS NOTED OTHERWISE.
5. ALL 120V RINGS LONGER THAN 60 FEET SHALL BE #10 AWG AND 277V RINGS LONGER THAN 150 FEET SHALL BE #10 AWG UNLESS NOTED OTHERWISE.
6. ALL CONDUCTORS SHALL BE COPPER.
7. WHERE CONDUCTOR GAGES ARE NOTED ON DRAWINGS, THAT WIRE SIZE SHALL BE THROUGH THE ENTIRE RUN UNLESS OTHERWISE NOTED.
8. MOUNTED LIGHT SWITCHES, AS APPLICABLE UNLESS NOTED OTHERWISE ON ARCHITECTURAL DRAWINGS.
9. ALL GANGED SWITCHES SHALL HAVE A COMMON SEAMLESS FACERATE. EACH MULTI-GANGED BOX SHALL BE NO MORE THAN SIX (6) SWITCHES WIDE. WHERE MORE THAN SIX (6) SWITCHES ARE SHOWN AT ONE (1) LOCATION, ADDITIONAL MULTI-GANGED BOXES SHALL BE STACKED VERTICALLY AND THE WIDTH OF THE MULTI-GANGEDS SHALL BE AS EVEN AS POSSIBLE.
10. EACH DIMMER SWITCH SHALL HAVE A RATING 25% HIGHER THAN THE TOTAL WATTAGE OF ALL LIGHTS TO BE CONTROLLED BY THE DIMMER. DIMMER SIZES 600, 1000, 1500, AND 2000 WATTS, LUTRON DIMMERS SHALL BE USED UNLESS OTHERWISE NOTED. DIMMER SWITCHES SHALL BE TRON NOVAT-STAR, FLUORESCENT AND LOW VOLTAGE DIMMERS HAL LITE LUTRON NOVAT-STAR.
11. WHERE FLUORESCENT FIXTURES ARE SHOWN TO BE DIMMED, THE DIMMER WITH THE SPECIFIED DIMMERS.
12. WHERE LED FIXTURES/LAMPS ARE SHOWN TO BE DIMMED, THE DIMMER SHALL BE COMPATIBLE WITH THE FIXTURE/LAMP SPECIFIED OR PROVIDED.
13. ALL EMERGENCY LIGHT FIXTURES SHALL HAVE 90 MINUTE BATTERY BACKUP WITH INTEGRAL TEST BUTTON AND SHALL BURN CONTINUOUSLY.
14. ALL FLUORESCENT FIXTURES THAT UTILIZE DOUBLE ENDED LAMPS AND CONTAIN BALLASTS SHALL BE PROVIDED WITH A DISCONNECTING MEANS IN ACCORDANCE WITH NEC 410.156.

LEGEND	
	2x4 SUSPENDED FLUORESCENT LIGHT FIXTURE (3 - 32w BULB) LITHONIA 2675 3 32 A12
	EMERGENCY LIGHT FIXTURE (12w)
	EXIT LIGHT FIXTURE - CEILING MOUNTED (10w)
	ELECTRIC PANEL BOARD
	CIRCUIT HOME RUN
	LIGHT SWITCH 120V COMMERCIAL GRADE
	LIGHT SWITCH - 3-WAY 120V COMMERCIAL GRADE
	JUNCTION BOX
	EXTERIOR LED WALL MOUNTED LIGHT FIXTURE WITH 40 MIN. BACK-UP (75w)

CONTRACTOR NOTE:
ALL TRAILERS HAVE BEEN PRE-MISSED WITH THE EXCEPTION OF HALLWAY LIGHTS. ELECTRICAL IS TO VERIFY AND NOTE ANY DEVIATIONS.



26 BUILDING A EXISTING LIGHTING PLAN
SCALE: 1/8"=1'-0"



27 BUILDING B EXISTING LIGHTING PLAN
SCALE: 1/8"=1'-0"

DAMMON ENGINEERING, INC.
LOUISIANA & MISSISSIPPI
www.dammonengineering.com
info@dammonengineering.com
PH: 985.649.5832 F: 985.641.9593
554 Old Spanish Trail
Bridell, LA 70088
Chief Engineer: Brian Matich, PE

#	DESCRIPTION	DATE



E102
DRAWING NUMBER:
SHEET NO. 10 of 11
SHEET TITLE: EXISTING LIGHTING PLAN
JOB NO: 1000 CANulette RD, SUITE 100, LAFAYETTE, LA 70508
DATE: 04-24-2021
CHECKED BY: RLD
DRAWN BY: CJD
06-10-2021