

EXHAUST FAN SCHEDULE

TAG	CFM	VOLTAGE	TYPE	MFR
D	10	120	VENT	BROAN OR EQUAL
E	450	120	VENT	

NOTE:
 1. PAINT ALL SHUTTERS AND EXTERIOR GRILLES TO COLOR SPECIFICATION BY ARCHITECT.
 2. PROVIDE BIRSCREENS ON ALL SHUTTERS AND EXTERIOR GRILLES.
 3. PROVIDE BACK FLOW PREVENTER ON ALL EXHAUST SYSTEMS

DIFFUSER SCHEDULE

TAG	SERVICE	NECK SIZE	DESCRIPTION
A	SERVICE AIR	SEE PLAN	24X24 ADJ SQUARE CONE DIFFUSER
B	SERVICE AIR	SEE PLAN	12X12 ADJ SQUARE CONE DIFFUSER
C	RETURN AIR	SEE PLAN	24X24 PERFORATED DUCT RETURN
D/E	EXHAUST AIR	SEE PLAN	12X12 EGGRATE EXHAUST GRILLE

NOTE:
 1. SEAL AROUND PERIMETER OF DIFFUSERS/GRILLES TO PREVENT MOISTURE MIGRATION FROM ATTIC SPACE.
 2. COORDINATE WITH OWNER/ARCHITECT FOR COLOR AND FINISH.
 3. R VALUE OF INSULATED BACK PANELS TO EXCEED R-6

PTAC SYSTEMS

TAG	TOTAL BTU	HEAT	OA	ELECTRICAL			MFR
				VOLT	MCA	MAX O.C.P.	
PTAC-1	15,000	3.5 kW	0	208V, 1Ø	14.5	20	AMANA - PMC 15B135A OR EQUAL

AHU UNIT SCHEDULE

DESIGNATION	TOTAL BTU	CFM	OA	HEAT (KW)	ELECTRICAL			MFR
					VOLT	MCA	MAX O.C.P.	
AHU-1	54,000 BTU 5 TON	2,000	200	10.8	208V, 3Ø	73	80	TRANE OR EQUAL
AHU-2	54,000 BTU 5 TON	2,000	200	10.8	208V, 3Ø	73	80	
AHU-3	48,000 BTU 4 TON	1,600	160	10.8	208V, 3Ø	73	80	

A/C UNIT SCHEDULE

DESIGNATION	TOTAL BTU	ELECTRICAL			MFR
		VOLT	MCA	MAX O.C.P.	
CU-1	54,000 BTU 5 TON	208V, 3Ø	21	35	TRANE OR EQUAL
CU-2	54,000 BTU 5 TON	208V, 3Ø	21	35	
CU-3	48,000 BTU 4 TON	208V, 3Ø	18	30	

GENERAL NOTES

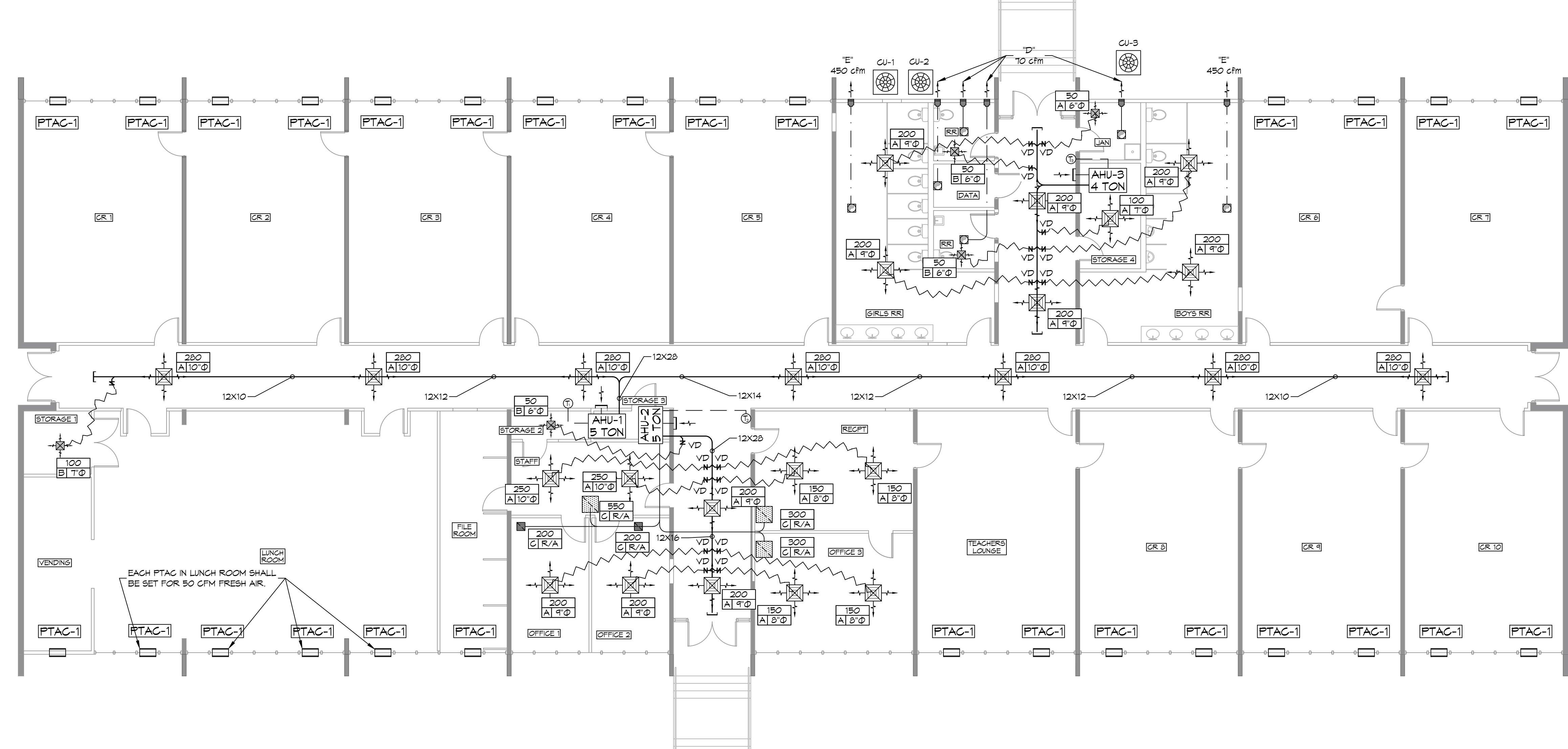
- CONCEALED DUCTWORK TO BE GALVANIZED SHEET METAL WRAPPED WITH FIBROUS GLASS DUCT WRAP WITH FSK VAPOR BARRIER, MIN R-6, INSTALLED PER SMACNA STANDARDS. DUCT WORK IMMEDIATELY DOWNSTREAM FROM RTU SHALL BE LINED FOR SOUND ATTENUATION.
- EXPOSED DUCTWORK TO BE GALVANIZED SHEET METAL LINED WITH FIBROUS GLASS DUCT LINER, MIN R-6, INSTALLED PER SMACNA STANDARDS.
- ROUND FLEXIBLE DUCT TO BE UL-181, CLASS 1, AIR DUCT MATERIALS.
- DUCT SIZES SHOWN ARE CLEAR INSIDE DIMENSIONS.
- IN ALL SYSTEMS OVER 2000 CFM AND LESS THAN 15,000 CFM, SMOKE DETECTORS SHALL BE INSTALLED IN ACCORDANCE WITH NFPA 72E IN THE RETURN DUCT DOWNSTREAM OF THE AIR HANDLING UNIT AND ALL FILTERS TO AUTOMATICALLY STOP THE FAN.
- PROVIDE UL LISTED 125 °F FIRESTAY IN RETURN AIR OF EACH SYSTEM UNDER 2000 CFM TO SHUT DOWN THE FAN IN THE EVENT OF FIRE.
- PROVIDE UL RATED FIRE DAMPERS WHERE REQUIRED AT ALL DUCT PENETRATIONS OF FIRE-RATED ASSEMBLIES AND WHERE REQUIRED BY CODE, INCLUDING OUTSIDE AIR INTAKES AND EXHAUST FANS.
- CONDENSATE DRAINS TO BE PVC PIPE RUN TO PLUMBERS P-TRAP WITHIN FIVE FEET OF AIR HANDLING UNITS.
- ALL AIR HANDLING SYSTEMS TO BE BALANCED TO ASSURE PROPER AIR FLOWS PER PLANS.
- ALL THERMOSTATS TO BE AUTOMATIC CHANGEOVER WITH HEAT SWITCH.
- EXHAUST FAN SHALL BE CONTROLLED BY A SWITCH ON THE WALL IN THE SAME LOCATION AS LIGHT SWITCH(S). PROVIDE BACK DRAFT DAMPER.
- PROVIDE AND INSTALL WATER PROOF GRILLE VENT IN PROPER ROOF LOCATION FOR PLUMBING FIXTURE EXHAUST.
- ALL SUPPLY AIR VENTS SHALL BE EQUIPPED WITH AIR CONTROL DAMPERS AT THE REGISTER.
- LOCATE OUTDOOR UNITS AS SHOWN ON ARCHITECTURAL DRAWINGS.
- REFRIGERANT LINES SHALL BE SIZED BY UNIT MANUFACTURER AND INSTALLED ACCORDING TO MANUFACTURER'S INSTRUCTIONS.
- FRESH AIR SHALL BE SUPPLIED TO EACH AIR HANDLER THROUGH EXTERIOR WALL DUCT SUPPLIED WITH A CONTROL DAMPER.
- ALL ELECTRICAL, MECHANICAL, AND PLUMBING PENETRATING FIRE WALLS SHALL BE FIRE CAULKED. PENETRATIONS THROUGH RATED CONSTRUCTION SHALL BE SEALED WITH A MATERIAL CAPABLE OF PREVENTING THE PASSAGE OF FLAMES AND HOT GASES WHEN TESTED IN ACCORDANCE WITH ASTM-E814.
- ALL MECHANICAL SYMBOLS ARE DRAWN DIAGRAMMATICALLY. CONTRACTOR TO VERIFY WITH OWNER LOCATIONS OF VENTS, DAMPERS, REGISTERS, ETC.
- FLEXIBLE DUCTWORK LENGTH NOT TO EXCEED 12'-0". SUPPORT FLEX DUCT TO PREVENT SAGGING.
- REFER TO REFLECTED CEILING PLAN FOR FINAL GRILLE AND DIFFUSER LOCATIONS AND COORDINATE AS REQUIRED.
- FINAL LOCATION OF TEMPERATURE CONTROLS TO BE COORDINATED WITH OWNER AT JOB SITE.
- PROVIDE AND INSTALL SMOKE DETECTORS AS APPROVED BY LOCAL A.H.J.S. PLACE NEAR R/A AND S/A OPENINGS OF AHU AND PROVIDE, WITH ACCESS PANEL, WIRING BY ELECTRICAL CONTRACTOR.
- FRESH AIR INTAKES ARE REQUIRED TO HAVE MOTORIZED OR GRAVITY DAMPERS TO SHUT OFF WHEN SYSTEM IS NOT RUNNING.
- PROVIDE BIRD SCREENS AT ALL EXTERIOR MECHANICAL PENETRATIONS.
- COORDINATE WALL MOUNTED THERMOSTAT LOCATIONS WITH ALL OWNER FURNISHED ITEMS EITHER WALL MOUNTED OR FLOOR MOUNTED AGAINST PARTITIONS. REFER TO ARCHITECTURAL DRAWINGS.
- PROVIDE MIN 18 GA GALVANIZED SHEET METAL TO BLANK-OFF GABLE VENTS WHERE INTAKE/EXHAUST DUCTS OCCUR.

DRAWN DIAGRAMMATICALLY FOR CLARITY. FIELD VERIFY PLACEMENT OF ALL EQUIPMENT

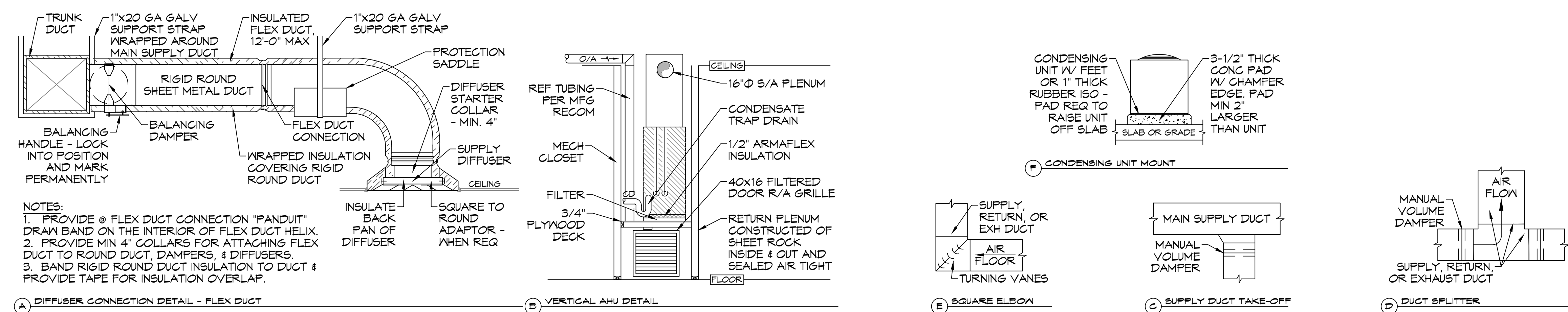
MECHANICAL LEGEND

	SUPPLY AIR GRILLE		EXHAUST FAN
	RETURN AIR GRILLE		THERMOSTAT
	DAMPER CONTROL		P-TAC
	SUPPLY DUCT		CFM
	RETURN AIR DUCT		MK SIZE
	EXHAUST DUCT		

ROUND FLEX DUCT, MAX. LENGTH 12'-0". MIN. R-6. DUCT SIZE AS FOLLOWS:
 160 CFM TO 225 CFM = 9"
 110 CFM TO 160 CFM = 8"
 75 CFM TO 110 CFM = 7"
 50 CFM TO 75 CFM = 6"



18 MECHANICAL PLAN
 SCALE: 1/8" = 1'-0"



TYPICAL HVAC DETAILS
 SCALE: NTS

DAMMON ENGINEERING, INC.
 LOUISIANA & MISSISSIPPI
 Chief Engineer: Brian Mistich, PE
 554 Old Spanish Trail
 Slidell, LA 70458
 www.dammonengineering.com
 info@dammonengineering.com
 PH: 985.649.5832

NO.	DATE	DESCRIPTION



BUILDING ONE RENOVATIONS
SUTHERLAND SCHOOL

3864 WTH-1ST
 METairie, LA 70002
 JOB No: 2465
 DATE: 10-26-2022
 DRAWN BY: DPF
 CHECKED BY: TT

SHEET TITLE: MECHANICAL PLAN
 DRAWING NUMBER:
M101
 SHEET No: